

**Appendix 11M8 Side-channel Habitat
Inundation Frequencies for
Reach 2**

Appendix 11M-8, Sacramento River Side-Channel Inundation Events for Reach 2

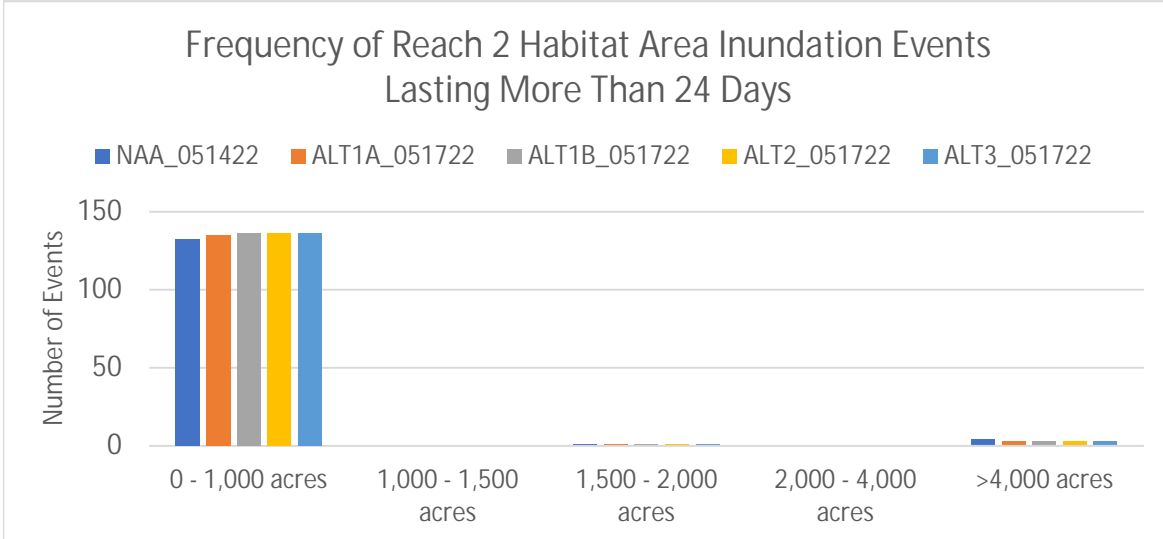
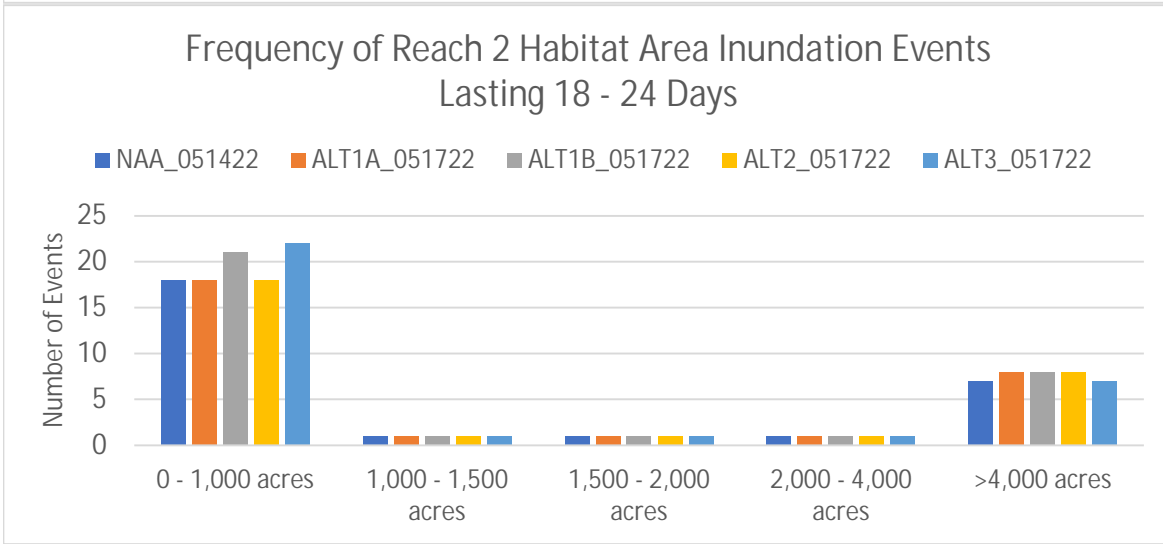
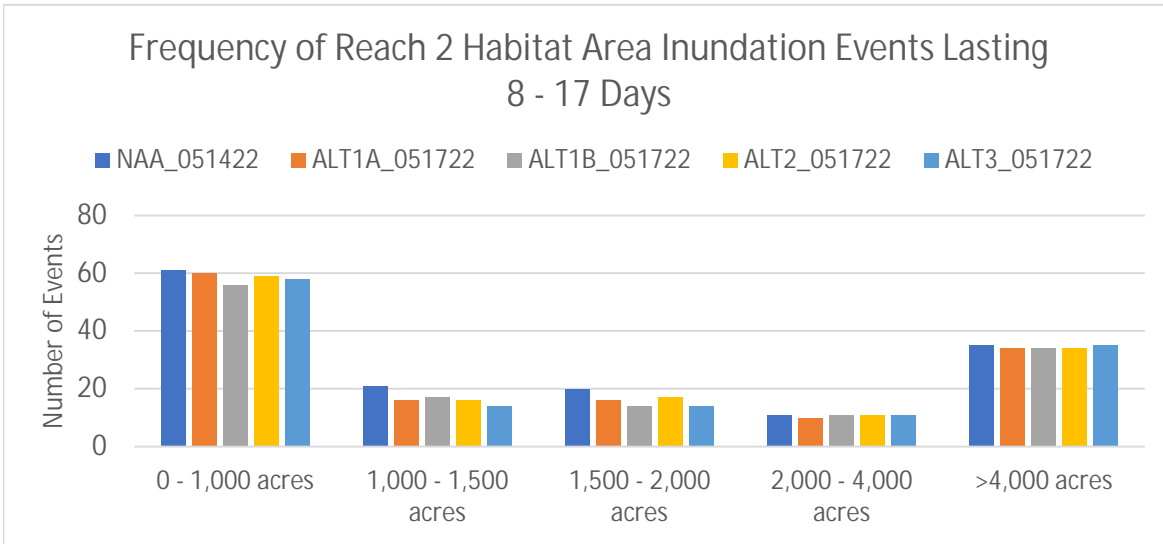
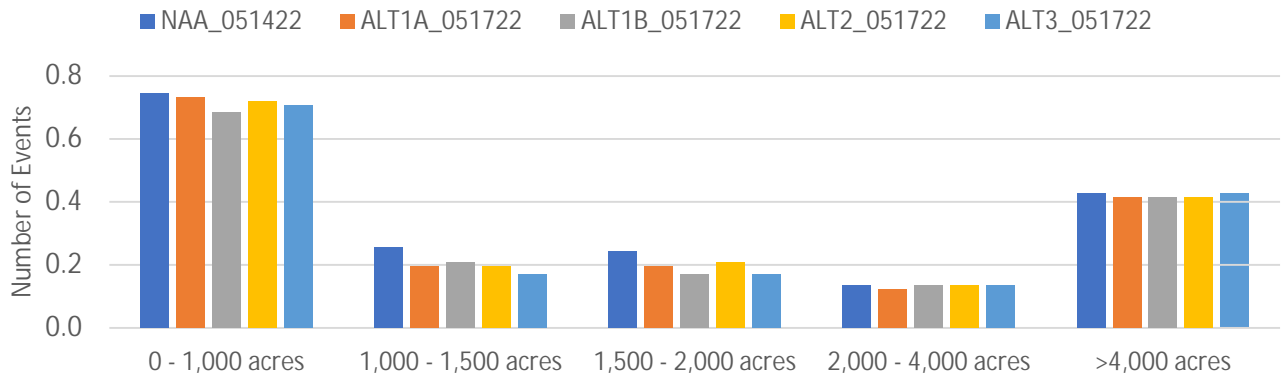


Table 1. Frequency of Sacramento River Reach 2 Habitat Area Inundation Events.

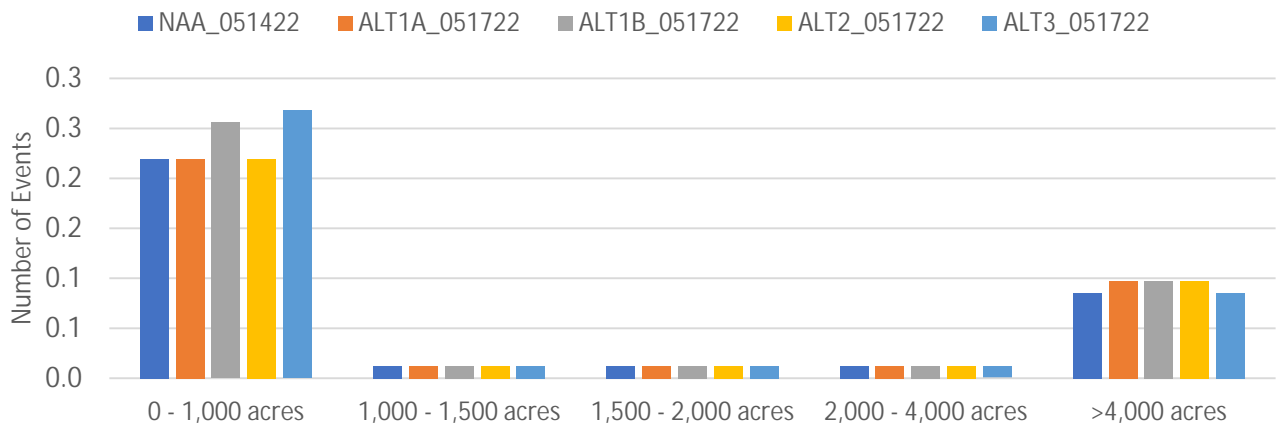
Frequency of Reach 2 Habitat Area Inundation Events Lasting 8 - 17 Days													
Area Range	NAA_051422	ALT1A_051722	ALT1A_051722 minus NAA_051422	Percent Change	ALT1B_051722	ALT1B_051722 minus NAA_051422	Percent Change	ALT2_051722	ALT2_051722 minus NAA_051422	Percent Change	ALT3_051722	ALT3_051722 minus NAA_051422	Percent Change
0 - 1,000 acres	61	60	-1	-2%	56	-5	-8%	59	-2	-3%	58	-3	-5%
1,000 - 1,500 acres	21	16	-5	-24%	17	-4	-19%	16	-5	-24%	14	-7	-33%
1,500 - 2,000 acres	20	16	-4	-20%	14	-6	-30%	17	-3	-15%	14	-6	-30%
2,000 - 4,000 acres	11	10	-1	-9%	11	0	0%	11	0	0%	11	0	0%
>4,000 acres	35	34	-1	0	34	-1	0	34	-1	0	35	0	0
Frequency of Reach 2 Habitat Area Inundation Events Lasting 18 - 24 Days													
Area Range	NAA_051422	ALT1A_051722	ALT1A_051722 minus NAA_051422	Percent Change	ALT1B_051722	ALT1B_051722 minus NAA_051422	Percent Change	ALT2_051722	ALT2_051722 minus NAA_051422	Percent Change	ALT3_051722	ALT3_051722 minus NAA_051422	Percent Change
0 - 1,000 acres	18	18	0	0%	21	3	17%	18	0	0%	22	4	22%
1,000 - 1,500 acres	1	1	0	0%	1	0	0%	1	0	0%	1	0	0%
1,500 - 2,000 acres	1	1	0	0%	1	0	0%	1	0	0%	1	0	0%
2,000 - 4,000 acres	1	1	0	0%	1	0	0%	1	0	0%	1	0	0%
>4,000 acres	7	8	1	0	8	1	0	8	1	0	7	0	0
Frequency of Reach 2 Habitat Area Inundation Events Lasting More Than 24 Days													
Area Range	NAA_051422	ALT1A_051722	ALT1A_051722 minus NAA_051422	Percent Change	ALT1B_051722	ALT1B_051722 minus NAA_051422	Percent Change	ALT2_051722	ALT2_051722 minus NAA_051422	Percent Change	ALT3_051722	ALT3_051722 minus NAA_051422	Percent Change
0 - 1,000 acres	132	135	3	2%	136	4	3%	136	4	3%	136	4	3%
1,000 - 1,500 acres	0	0	0	-	0	0	-	0	0	-	0	0	-
1,500 - 2,000 acres	1	1	0	0%	1	0	0%	1	0	0%	1	0	0%
2,000 - 4,000 acres	0	0	0	-	0	0	-	0	0	-	0	0	-
>4,000 acres	4	3	-1	0	3	-1	0	3	-1	0	3	-1	0

*Based on total number of events in 82 year simulation period.

Average Annual Reach 2 Habitat Area Inundation Events Lasting 8 - 17 Days



Average Annual Reach 2 Habitat Area Inundation Events Lasting 18 - 24 Days



Average Annual Reach 2 Habitat Area Inundation Events Lasting More Than 24 Days

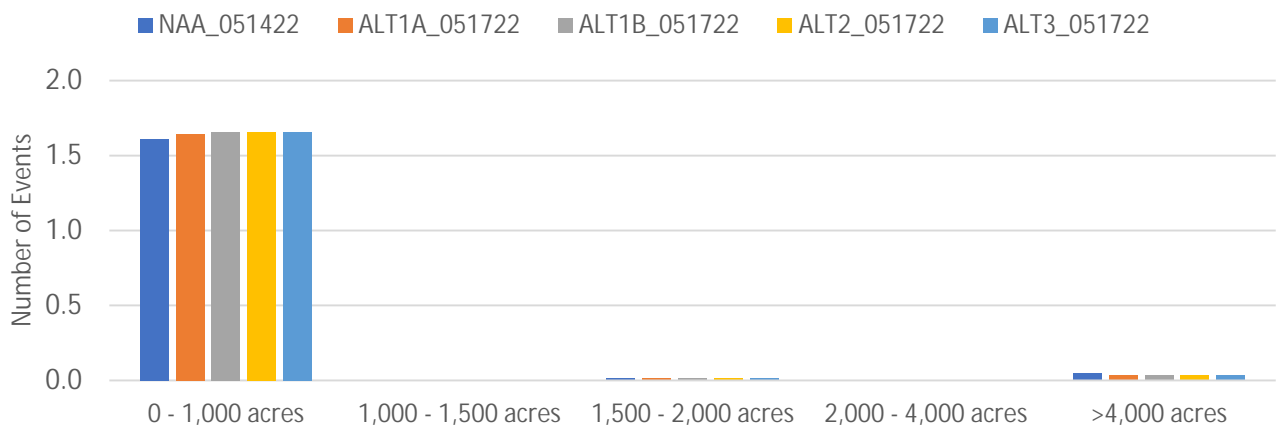


Table 4. Average Annual Reach 2 Habitat Area Inundation Events.

Average Annual Reach 2 Habitat Area Inundation Events Lasting 8 - 17 Days													
Area Range	NAA_051422	ALT1A_051722	ALT1A_051722 minus NAA_051422	Percent Change	ALT1B_051722	ALT1B_051722 minus NAA_051422	Percent Change	ALT2_051722	ALT2_051722 minus NAA_051422	Percent Change	ALT3_051722	ALT3_051722 minus NAA_051422	Percent Change
0 - 1,000 acres	0.74	0.73	-0.01	-2%	0.68	-0.06	-8%	0.72	-0.02	-3%	0.71	-0.04	-5%
1,000 - 1,500 acres	0.26	0.20	-0.06	-24%	0.21	-0.05	-19%	0.20	-0.06	-24%	0.17	-0.09	-33%
1,500 - 2,000 acres	0.24	0.20	-0.05	-20%	0.17	-0.07	-30%	0.21	-0.04	-15%	0.17	-0.07	-30%
2,000 - 4,000 acres	0.13	0.12	-0.01	-9%	0.13	0.00	0%	0.13	0.00	0%	0.13	0.00	0%
>4,000 acres	0.43	0.41	-0.01	0	0.41	-0.01	0	0.41	-0.01	0	0.43	0.00	0
Average Annual Reach 2 Habitat Area Inundation Events Lasting 18 - 24 Days													
Area Range	NAA_051422	ALT1A_051722	ALT1A_051722 minus NAA_051422	Percent Change	ALT1B_051722	ALT1B_051722 minus NAA_051422	Percent Change	ALT2_051722	ALT2_051722 minus NAA_051422	Percent Change	ALT3_051722	ALT3_051722 minus NAA_051422	Percent Change
0 - 1,000 acres	0.22	0.22	0.00	0%	0.26	0.04	17%	0.22	0.00	0%	0.27	0.05	22%
1,000 - 1,500 acres	0.01	0.01	0.00	0%	0.01	0.00	0%	0.01	0.00	0%	0.01	0.00	0%
1,500 - 2,000 acres	0.01	0.01	0.00	0%	0.01	0.00	0%	0.01	0.00	0%	0.01	0.00	0%
2,000 - 4,000 acres	0.01	0.01	0.00	0%	0.01	0.00	0%	0.01	0.00	0%	0.01	0.00	0%
>4,000 acres	0.09	0.10	0.01	0	0.10	0.01	0	0.10	0.01	0	0.09	0.00	0
Average Annual Reach 2 Habitat Area Inundation Events Lasting Greater than 24 Days													
Area Range	NAA_051422	ALT1A_051722	ALT1A_051722 minus NAA_051422	Percent Change	ALT1B_051722	ALT1B_051722 minus NAA_051422	Percent Change	ALT2_051722	ALT2_051722 minus NAA_051422	Percent Change	ALT3_051722	ALT3_051722 minus NAA_051422	Percent Change
0 - 1,000 acres	1.61	1.65	0.04	2%	1.66	0.05	3%	1.66	0.05	3%	1.66	0.05	3%
1,000 - 1,500 acres	0.00	0.00	0.00	-	0.00	0.00	-	0.00	0.00	-	0.00	0.00	-
1,500 - 2,000 acres	0.01	0.01	0.00	0%	0.01	0.00	0%	0.01	0.00	0%	0.01	0.00	0%
2,000 - 4,000 acres	0.00	0.00	0.00	-	0.00	0.00	-	0.00	0.00	-	0.00	0.00	-
>4,000 acres	0.05	0.04	-0.01	0	0.04	-0.01	0	0.04	-0.01	0	0.04	-0.01	0

*Based on total events in 82 year simulation period.