

**Appendix 11M9 Side-channel Habitat
Inundation Frequencies for
Reach 3**

Appendix 11M-9 , Sacramento River Side-Channel Inundation Events for Reach 3

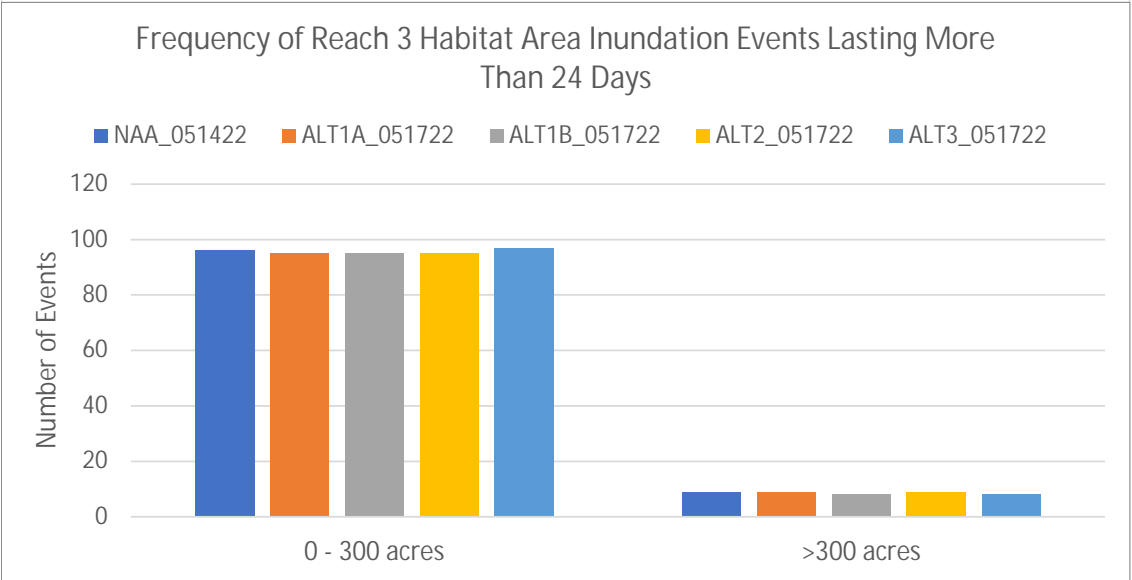
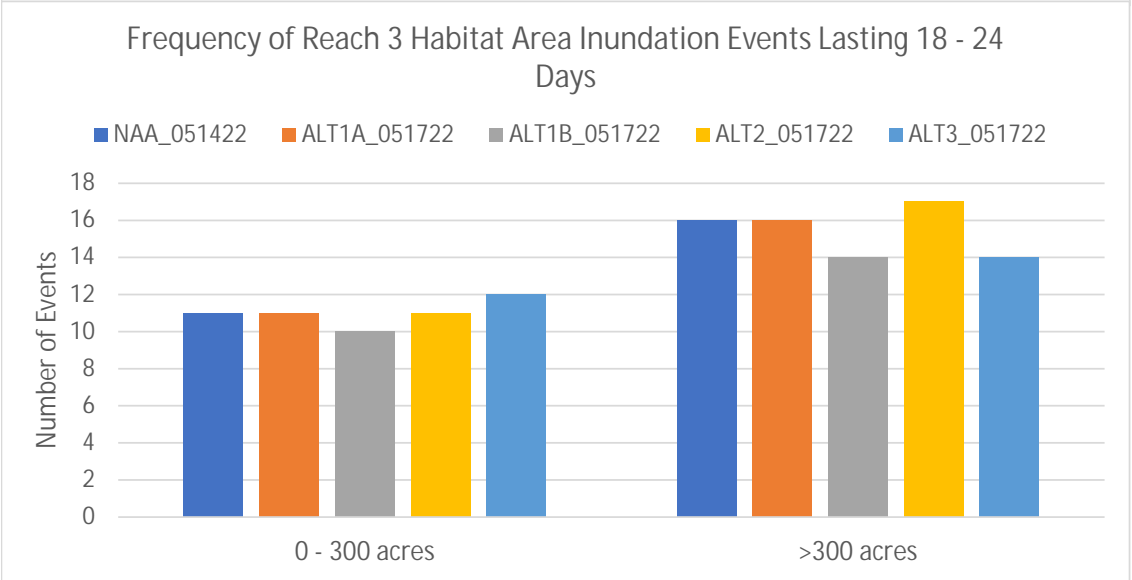
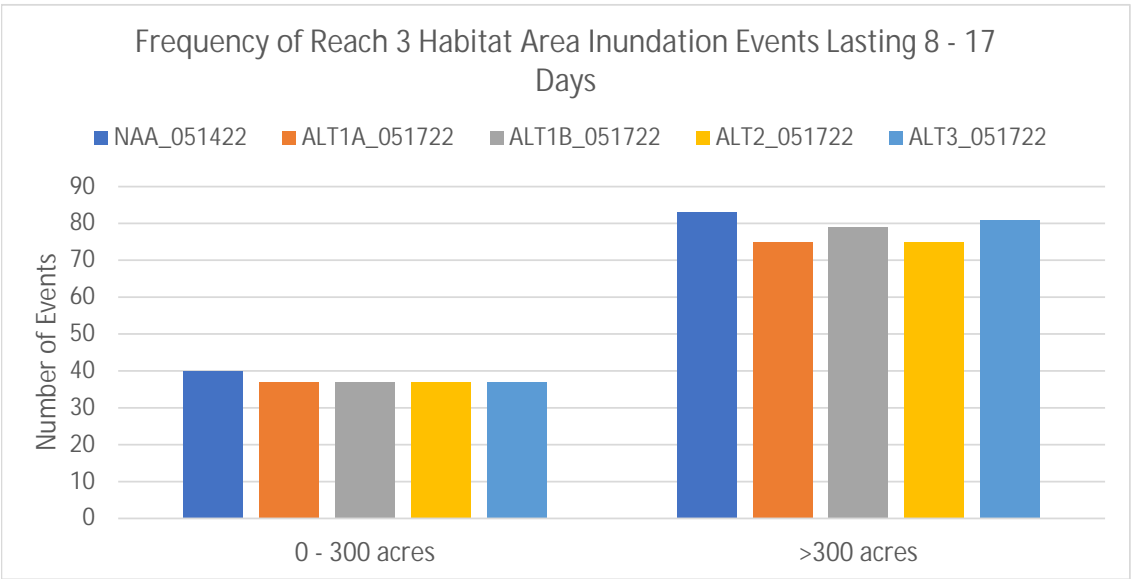


Table 1. Frequency of Reach 3 Habitat Area Inundation Events.

Frequency of Reach 3 Habitat Area Inundation Events Lasting 8 - 17 Days													
Area Range	NAA_051422	ALT1A_051722	ALT1A_051722 minus NAA_051422	Percent Change	ALT1B_051722	ALT1B_051722 minus NAA_051422	Percent Change	ALT2_051722	ALT2_051722 minus NAA_051422	Percent Change	ALT3_051722	ALT3_051722 minus NAA_051422	Percent Change
0 - 300 acres	40	37	-3	-8%	37	-3	-8%	37	-3	-8%	37	-3	-8%
>300 acres	83	75	-8	-10%	79	-4	-5%	75	-8	-10%	81	-2	-2%
Frequency of Reach 3 Habitat Area Inundation Events Lasting 18 - 24 Days													
Area Range	NAA_051422	ALT1A_051722	ALT1A_051722 minus NAA_051422	Percent Change	ALT1B_051722	ALT1B_051722 minus NAA_051422	Percent Change	ALT2_051722	ALT2_051722 minus NAA_051422	Percent Change	ALT3_051722	ALT3_051722 minus NAA_051422	Percent Change
0 - 300 acres	11	11	0	0%	10	-1	-9%	11	0	0%	12	1	9%
>300 acres	16	16	0	0%	14	-2	-13%	17	1	6%	14	-2	-13%
Frequency of Reach 3 Habitat Area Inundation Events Lasting More Than 24 Days													
Area Range	NAA_051422	ALT1A_051722	ALT1A_051722 minus NAA_051422	Percent Change	ALT1B_051722	ALT1B_051722 minus NAA_051422	Percent Change	ALT2_051722	ALT2_051722 minus NAA_051422	Percent Change	ALT3_051722	ALT3_051722 minus NAA_051422	Percent Change
0 - 300 acres	96	95	-1	-1%	95	-1	-1%	95	-1	-1%	97	1	1%
>300 acres	9	9	0	0%	8	-1	-11%	9	0	0%	8	-1	-11%

*Based on total number of events in 82 year simulation period.

Table 2. Monthly Summary of Frequency of Reach 3 Habitat Area Inundation Events Lasting 8 - 17 Days

Frequency of Reach 3 Habitat Area Inundation Events Lasting 8 - 17 Days in October													
Area Range	NAA_051422	ALT1A_051722	ALT1A_051722 minus NAA_051422	Percent Change	ALT1B_051722	ALT1B_051722 minus NAA_051422	Percent Change	ALT2_051722	ALT2_051722 minus NAA_051422	Percent Change	ALT3_051722	ALT3_051722 minus NAA_051422	Percent Change
0 - 300 acres	0	0	0	0%	0	0	0%	0	0	0%	0	0	0%
>300 acres	0	0	0	0%	0	0	0%	0	0	0%	0	0	0%
Frequency of Reach 3 Habitat Area Inundation Events Lasting 8 - 17 Days in November													
0 - 300 acres	0	0	0	0%	0	0	0%	0	0	0%	0	0	0%
>300 acres	2	1	-1	-50%	2	0	0%	1	-1	-50%	2	0	0%
Frequency of Reach 3 Habitat Area Inundation Events Lasting 8 - 17 Days in December													
0 - 300 acres	6	6	0	0%	6	0	0%	6	0	0%	6	0	0%
>300 acres	9	10	1	11%	12	3	33%	10	1	11%	14	5	56%
Frequency of Reach 3 Habitat Area Inundation Events Lasting 8 - 17 Days in January													
0 - 300 acres	9	9	0	0%	9	0	0%	9	0	0%	9	0	0%
>300 acres	22	17	-5	-23%	17	-5	-23%	17	-5	-23%	17	-5	-23%
Frequency of Reach 3 Habitat Area Inundation Events Lasting 8 - 17 Days in February													
0 - 300 acres	9	8	-1	-11%	8	-1	-11%	8	-1	-11%	8	-1	-11%
>300 acres	23	21	-2	-9%	21	-2	-9%	22	-1	-4%	21	-2	-9%
Frequency of Reach 3 Habitat Area Inundation Events Lasting 8 - 17 Days in March													
0 - 300 acres	13	12	-1	-8%	12	-1	-8%	12	-1	-8%	12	-1	-8%
>300 acres	19	19	0	0%	20	1	5%	19	0	0%	20	1	5%
Frequency of Reach 3 Habitat Area Inundation Events Lasting 8 - 17 Days in April													
0 - 300 acres	3	2	-1	-33%	2	-1	-33%	2	-1	-33%	2	-1	-33%
>300 acres	6	6	0	0%	6	0	0%	5	-1	-17%	6	0	0%
Frequency of Reach 3 Habitat Area Inundation Events Lasting 8 - 17 Days in May													
0 - 300 acres	0	0	0	0%	0	0	0%	0	0	0%	0	0	0%
>300 acres	2	1	-1	-50%	1	-1	-50%	1	-1	-50%	1	-1	-50%
Frequency of Reach 3 Habitat Area Inundation Events Lasting 8 - 17 Days in June													
0 - 300 acres	0	0	0	0%	0	0	0%	0	0	0%	0	0	0%
>300 acres	0	0	0	0%	0	0	0%	0	0	0%	0	0	0%
Frequency of Reach 3 Habitat Area Inundation Events Lasting 8 - 17 Days in July													
0 - 300 acres	0	0	0	0%	0	0	0%	0	0	0%	0	0	0%
>300 acres	0	0	0	0%	0	0	0%	0	0	0%	0	0	0%
Frequency of Reach 3 Habitat Area Inundation Events Lasting 8 - 17 Days in August													
0 - 300 acres	0	0	0	0%	0	0	0%	0	0	0%	0	0	0%
>300 acres	0	0	0	0%	0	0	0%	0	0	0%	0	0	0%
Frequency of Reach 3 Habitat Area Inundation Events Lasting 8 - 17 Days in September													
0 - 300 acres	0	0	0	0%	0	0	0%	0	0	0%	0	0	0%
>300 acres	0	0	0	0%	0	0	0%	0	0	0%	0	0	0%

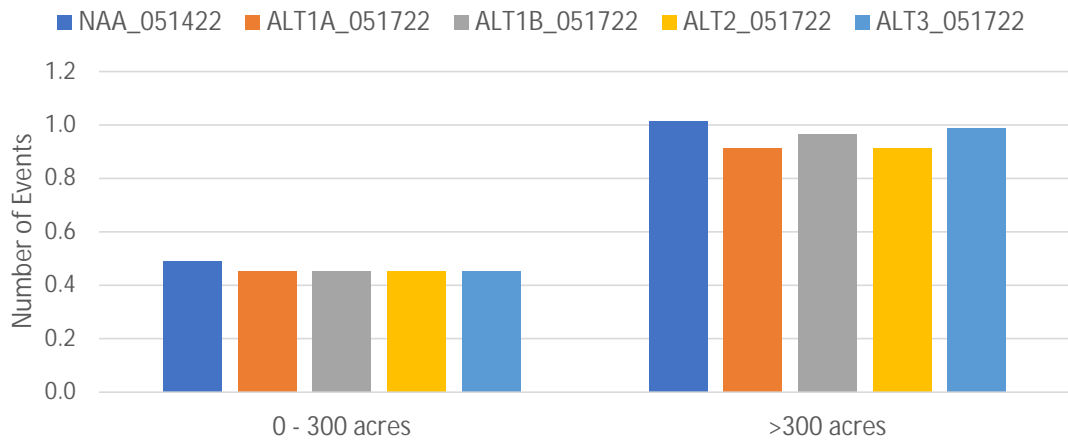
Table 3. Monthly Summary of Frequency of Reach 3 Habitat Area Inundation Events Lasting 18 - 24 Days

Frequency of Reach 3 Habitat Area Inundation Events Lasting 18 - 24 Days in October													
Area Range	NAA_051422	ALT1A_051722	ALT1A_051722 minus NAA_051422	Percent Change	ALT1B_051722	ALT1B_051722 minus NAA_051422	Percent Change	ALT2_051722	ALT2_051722 minus NAA_051422	Percent Change	ALT3_051722	ALT3_051722 minus NAA_051422	Percent Change
0 - 300 acres	0	0	0	-	0	0	-	0	0	-	0	0	-
>300 acres	0	0	0	-	0	0	-	0	0	-	0	0	-
Frequency of Reach 3 Habitat Area Inundation Events Lasting 18 - 24 Days in November													
0 - 300 acres	0	0	0	-	0	0	-	0	0	-	0	0	-
>300 acres	0	0	0	-	0	0	-	0	0	-	0	0	-
Frequency of Reach 3 Habitat Area Inundation Events Lasting 18 - 24 Days in December													
0 - 300 acres	0	0	0	-	0	0	-	0	0	-	0	0	-
>300 acres	2	2	0	0%	1	-1	-50%	2	0	0%	1	-1	-50%
Frequency of Reach 3 Habitat Area Inundation Events Lasting 18 - 24 Days in January													
0 - 300 acres	1	1	0	0%	5	-1	-100%	1	0	0%	0	-1	-100%
>300 acres	5	5	0	0%	5	0	0%	5	0	0%	6	1	20%
Frequency of Reach 3 Habitat Area Inundation Events Lasting 18 - 24 Days in February													
0 - 300 acres	6	5	-1	-17%	5	-1	-17%	5	-1	-17%	6	0	0%
>300 acres	4	4	0	0%	4	0	0%	4	0	0%	3	-1	-25%
Frequency of Reach 3 Habitat Area Inundation Events Lasting 18 - 24 Days in March													
0 - 300 acres	3	3	0	0%	3	0	0%	3	0	0%	4	1	33%
>300 acres	1	1	0	0%	0	-1	-100%	1	0	0%	0	-1	-100%
Frequency of Reach 3 Habitat Area Inundation Events Lasting 18 - 24 Days in April													
0 - 300 acres	1	2	1	100%	2	1	100%	2	1	100%	2	1	100%
>300 acres	3	3	0	0%	3	0	0%	4	1	33%	3	0	0%
Frequency of Reach 3 Habitat Area Inundation Events Lasting 18 - 24 Days in May													
0 - 300 acres	0	0	0	-	0	0	-	0	0	-	0	0	-
>300 acres	0	0	0	-	0	0	-	0	0	-	0	0	-
Frequency of Reach 3 Habitat Area Inundation Events Lasting 18 - 24 Days in June													
0 - 300 acres	0	0	0	-	0	0	-	0	0	-	0	0	-
>300 acres	1	1	0	0%	1	0	0%	1	0	0%	1	0	0%
Frequency of Reach 3 Habitat Area Inundation Events Lasting 18 - 24 Days in July													
0 - 300 acres	0	0	0	-	0	0	-	0	0	-	0	0	-
>300 acres	0	0	0	-	0	0	-	0	0	-	0	0	-
Frequency of Reach 3 Habitat Area Inundation Events Lasting 18 - 24 Days in August													
0 - 300 acres	0	0	0	-	0	0	-	0	0	-	0	0	-
>300 acres	0	0	0	-	0	0	-	0	0	-	0	0	-
Frequency of Reach 3 Habitat Area Inundation Events Lasting 18 - 24 Days in September													
0 - 300 acres	0	0	0	-	0	0	-	0	0	-	0	0	-
>300 acres	0	0	0	-	0	0	-	0	0	-	0	0	-

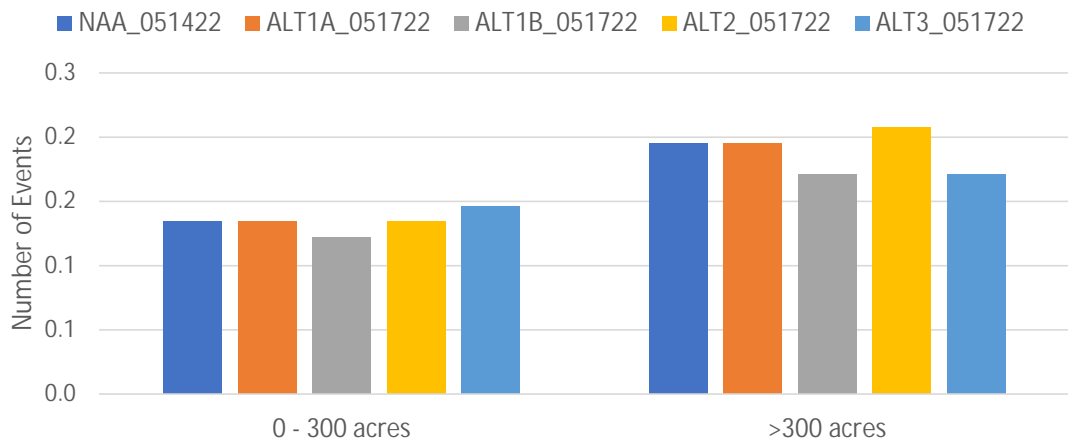
Table 4. Monthly Summary of Frequency of Reach 3 Habitat Area Inundation Events Lasting More Than 24 Days

Frequency of Reach 3 Habitat Area Inundation Events Lasting More Than 24 Days in October													
Area Range	NAA_051422	ALT1A_051722	ALT1A_051722 minus NAA_051422	Percent Change	ALT1B_051722	ALT1B_051722 minus NAA_051422	Percent Change	ALT2_051722	ALT2_051722 minus NAA_051422	Percent Change	ALT3_051722	ALT3_051722 minus NAA_051422	Percent Change
0 - 300 acres	1	1	0	0%	1	0	0%	1	0	0%	1	0	0%
>300 acres	0	0	0	0%	0	0	0%	0	0	0%	0	0	0%
Frequency of Reach 3 Habitat Area Inundation Events Lasting More Than 24 Days in November													
0 - 300 acres	1	1	0	0%	1	0	0%	1	0	0%	1	0	0%
>300 acres	1	1	0	0%	0	-1	-100%	1	0	0%	0	-1	-100%
Frequency of Reach 3 Habitat Area Inundation Events Lasting More Than 24 Days in December													
0 - 300 acres	1	1	0	0%	1	0	0%	1	0	0%	1	0	0%
>300 acres	0	0	0	0%	0	0	0%	0	0	0%	0	0	0%
Frequency of Reach 3 Habitat Area Inundation Events Lasting More Than 24 Days in January													
0 - 300 acres	12	13	1	8%	14	2	17%	13	1	8%	15	3	25%
>300 acres	1	2	1	100%	2	1	100%	2	1	100%	1	0	0%
Frequency of Reach 3 Habitat Area Inundation Events Lasting More Than 24 Days in February													
0 - 300 acres	15	16	1	7%	15	0	0%	16	1	7%	14	-1	-7%
>300 acres	3	3	0	0%	3	0	0%	3	0	0%	4	1	33%
Frequency of Reach 3 Habitat Area Inundation Events Lasting More Than 24 Days in March													
0 - 300 acres	10	11	1	10%	11	1	10%	11	1	10%	11	1	10%
>300 acres	2	2	0	0%	2	2	100%	2	0	0%	2	0	0%
Frequency of Reach 3 Habitat Area Inundation Events Lasting More Than 24 Days in April													
0 - 300 acres	1	1	0	0%	1	0	0%	1	0	0%	1	0	0%
>300 acres	2	1	-1	-50%	1	-1	-50%	1	-1	-50%	1	-1	-50%
Frequency of Reach 3 Habitat Area Inundation Events Lasting More Than 24 Days in May													
0 - 300 acres	1	1	0	0%	1	0	0%	1	0	0%	1	0	0%
>300 acres	0	0	0	0%	0	0	0%	0	0	0%	0	0	0%
Frequency of Reach 3 Habitat Area Inundation Events Lasting More Than 24 Days in June													
0 - 300 acres	1	2	1	100%	2	1	100%	2	1	100%	3	2	200%
>300 acres	0	0	0	0%	0	0	0%	0	0	0%	0	0	0%
Frequency of Reach 3 Habitat Area Inundation Events Lasting More Than 24 Days in July													
0 - 300 acres	20	17	-3	-15%	17	3	15%	17	3	15%	18	-2	-10%
>300 acres	0	0	0	0%	0	0	0%	0	0	0%	0	0	0%
Frequency of Reach 3 Habitat Area Inundation Events Lasting More Than 24 Days in August													
0 - 300 acres	19	18	-1	-5%	19	0	0%	18	-1	-5%	18	-1	-5%
>300 acres	0	0	0	0%	0	0	0%	0	0	0%	0	0	0%
Frequency of Reach 3 Habitat Area Inundation Events Lasting More Than 24 Days in September													
0 - 300 acres	14	13	-1	-7%	12	-2	-14%	13	-1	-7%	13	-1	-7%
>300 acres	0	0	0	0%	0	0	0%	0	0	0%	0	0	0%

Average Annual Reach 3 Habitat Area Inundation Events Lasting 8 - 17 Days



Average Annual Reach 3 Habitat Area Inundation Events Lasting 18 - 24 Days



Average Annual Reach 3 Habitat Area Inundation Events Lasting More Than 24 Days

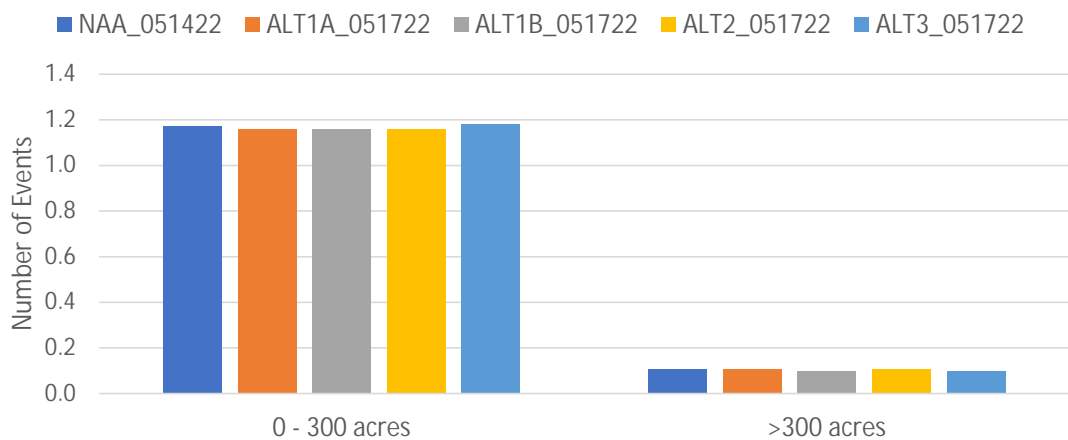


Table 5. Average Annual Reach 3 Habitat Area Inundation Events.

Average Annual Reach 3 Habitat Area Inundation Events Lasting 8 - 17 Days													
Area Range	NAA_051422	ALT1A_051722	ALT1A_051722 minus NAA_051422	Percent Change	ALT1B_051722	ALT1B_051722 minus NAA_051422	Percent Change	ALT2_051722	ALT2_051722 minus NAA_051422	Percent Change	ALT3_051722	ALT3_051722 minus NAA_051422	Percent Change
0 - 300 acres	0.49	0.45	-0.04	-8%	0.45	-0.04	-8%	0.45	-0.04	-8%	0.45	-0.04	-8%
>300 acres	1.01	0.91	-0.10	-10%	0.96	-0.05	-5%	0.91	-0.10	-10%	0.99	-0.02	-2%
Average Annual Reach 3 Habitat Area Inundation Events Lasting 18 - 24 Days													
Area Range	NAA_051422	ALT1A_051722	ALT1A_051722 minus NAA_051422	Percent Change	ALT1B_051722	ALT1B_051722 minus NAA_051422	Percent Change	ALT2_051722	ALT2_051722 minus NAA_051422	Percent Change	ALT3_051722	ALT3_051722 minus NAA_051422	Percent Change
0 - 300 acres	0.13	0.13	0.00	0%	0.12	-0.01	-9%	0.13	0.00	0%	0.15	0.01	9%
>300 acres	0.20	0.20	0.00	0%	0.17	-0.02	-13%	0.21	0.01	6%	0.17	-0.02	-13%
Average Annual Reach 3 Habitat Area Inundation Events Lasting More Than 24 Days													
Area Range	NAA_051422	ALT1A_051722	ALT1A_051722 minus NAA_051422	Percent Change	ALT1B_051722	ALT1B_051722 minus NAA_051422	Percent Change	ALT2_051722	ALT2_051722 minus NAA_051422	Percent Change	ALT3_051722	ALT3_051722 minus NAA_051422	Percent Change
0 - 300 acres	1.17	1.16	-0.01	-1%	1.16	-0.01	-1%	1.16	-0.01	-1%	1.18	0.01	1%
>300 acres	0.11	0.11	0.00	0%	0.10	-0.01	-11%	0.11	0.00	0%	0.10	-0.01	-11%

*Based on total events in 82 year simulation period.