



SUMMARY

USDA
National Agricultural Statistics Service
California County
Agricultural Commissioners'
Reports, 2009-2010

Gross Values by Commodity Groups
December 2011

California Agricultural Statistics Districts



TABLE OF CONTENTS

Summary of County Agricultural Data.....	1
Notes to the Agricultural Commissioners' Data	2
Gross Value of Agricultural Production With and Without Timber, 1999-2010	2
County Rank by Gross Value of Agricultural Production, 2009-2010	3
County Gross Value of Agricultural Production by Commodity Group, 2009-2010	4
Commodity Rank and Leading Counties by Gross Value of Agricultural Production, 2010	8
Total Gross Value of Agricultural Production by Commodity Groups and Leading Counties, 2010	11
Leading Commodities for Gross Value of Agricultural Production by County, 2010.....	12
Organic Farming, 2010.....	16
County Agricultural Commissioners	17

Prepared by:

USDA, National Agricultural Statistics Service, California Field Office

650 Capitol Mall, Suite 6-100, Sacramento, CA 95814

P.O. Box 1258, Sacramento, CA 95812

Phone: (916) 498-5161

Fax: (916) 498-5186

Cooperating with the California Department of Food and Agriculture

December 16, 2011

COUNTY AGRICULTURAL COMMISSIONERS' REPORTS

Copies of individual County Agricultural Commissioners' Reports may be requested or obtained directly from each County Agricultural Commissioner's Office.

For your convenience, a listing is included at the end of this report.
Many of the counties publish the reports on their websites free-of-charge.

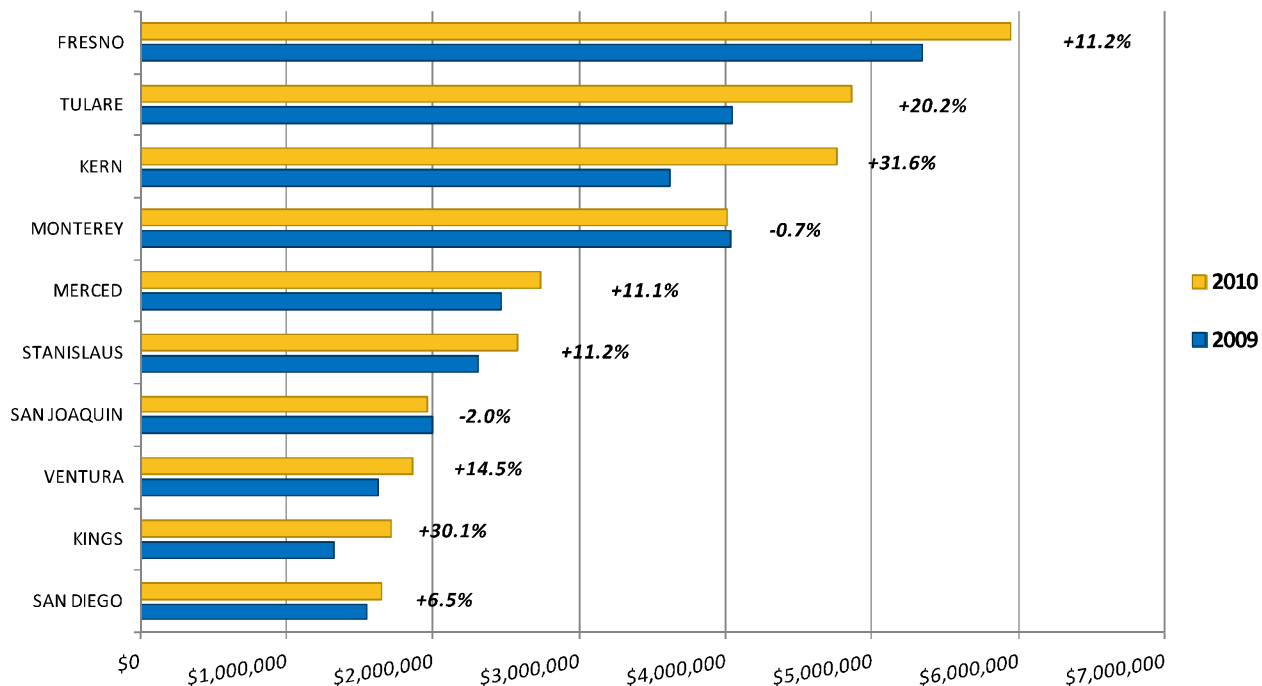
USDA's National Agricultural Statistics Service, California Field Office publications are available free-of-charge on the Internet at:

www.nass.usda.gov/ca.

Summary of County Agricultural Data

California's counties reported an increase of 11.6 percent in the value of their agricultural production for 2010. Four counties reported agricultural production exceeding \$3.0 billion each and fourteen counties reported a value of production in excess of \$1.0 billion. Fresno continued as the leading county with an agricultural production value of \$5.94 billion, an increase of 11.2 percent from the 2009 value. Tulare County was second in value of production with \$4.86 billion, a 20.2 percent increase from 2009. Kern had an increase of 31.6 percent in production to \$4.76 billion, moving the county to third in value. Monterey's slight decrease of 0.7 percent dropped their value of agricultural production to \$4.01 billion, fourth in value.

CALIFORNIA'S TOP 10 COUNTIES CHANGE IN AGRICULTURAL PRODUCTION, 2009-2010



Highlights of County Ranks and State Totals, 2009-2010

Milk and Cream	Tulare leads again with over 27 percent of the State total
Grapes, All	Fresno leads, followed closely by Kern and Tulare
Almonds	Kern leads with 21 percent, followed closely by Fresno
Nursery Products	San Diego continues to lead with more than 27 percent of the total
Cattle and Calves	Tulare is No. 1, followed by Fresno and Imperial
Lettuce	Monterey leads with over 63 percent of the State total
Strawberries	Monterey and Ventura lead with more than 62 percent of the total
Pistachios	Kern leads with more than 42 percent of the total
Oranges	Tulare leads with over half of the State total
Walnuts (English)	San Joaquin leads with nearly 20 percent, followed by Butte
Rice (Excl. Seed)	Colusa leads with 27 percent of the total followed by Sutter and Butte
Chickens	Fresno leads with 40 percent, followed by Stanislaus and Merced
Tomatoes, Processing	Fresno leads with over 35 percent, followed by Kings and Stanislaus
Alfalfa Hay	Imperial leads with over 14 percent, followed closely by Kern
Flowers and Foliage	San Diego leads with over half of the State total

Notes to the Agricultural Commissioners' Data

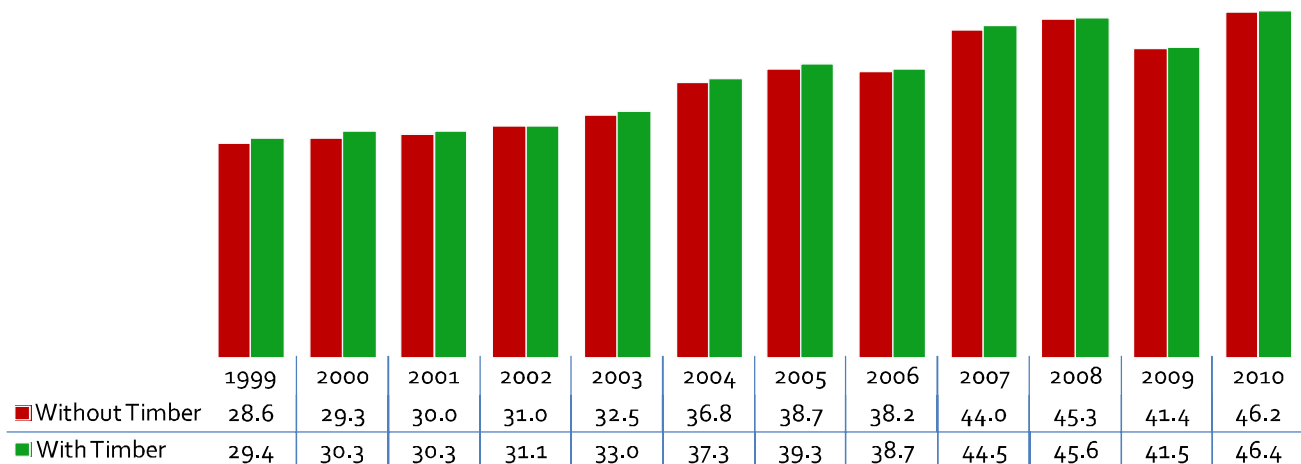
The gross value of production published in this report includes all farm production, whether sold into usual marketing channels or used on the farm where it is produced. Values placed on pasture and range feed are included and fresh fruit and vegetable crop values are based on the Free-On-Board (F.O.B.) packed price. Values are recorded for all products grown during the calendar year, regardless of when they are marketed. The *California County Agricultural Commissioners' Reports* publication also provides statistics on a broader range of commodities than estimates prepared by other agencies.

Because of these concepts, the State total for gross dollar values summarized in this report differs from the cash receipts to farmers estimated by USDA's National Agricultural Statistics Service, California Field Office. The larger total value reported by agricultural commissioners results from the different definitions used in estimating total value of production rather than cash receipts to producers. *Three County Agricultural Commissioners' Reports, Humboldt, Modoc and Trinity, were not available at publication, therefore the most recent data from the last available reports were used. 2009 data was used for Humboldt County, 2008 data for Modoc County, and 2007 data for Trinity County.* Copies of individual County Agricultural Commissioners' Reports may be requested or obtained directly from each County Agricultural Commissioner's office. For your convenience, a listing is included at the end of this report on pages 17 and 18. Many of the counties publish the report on their websites.

California's Leading Timber Counties, 2010 1/					
Timber Rank	County	Timber Volume	Total Agricultural Value (Including Timber)	Timber Value	Timber Percentage of County Agricultural Value
		Million Bd. Ft.	\$1,000	\$1,000	Percent
1	Humboldt	218,651	181,010	68,039	37.6
2	Mendocino	94,724	145,649	29,256	20.1
3	Siskiyou	188,750	218,689	22,976	10.5
4	Shasta	151,116	110,283	16,665	15.1
5	Plumas	88,996	30,078	10,059	33.4

1/ Timber volume and value data are from the State Board of Equalization, Timber Tax Division.

CALIFORNIA GROSS VALUE OF AGRICULTURAL PRODUCTION WITH AND WITHOUT TIMBER, 1999-2010 \$BILLIONS



Some counties are now including timber as a part of their crop report, following the pattern set by the California County Agricultural Commissioners and Sealers Association (CACASA). Since it is not comparable to earlier county summaries, timber has not been made a part of the main tables of this summary. The total 2010 value of production reported by the counties, including timber, is \$46.4 billion, up 11.6 percent from last year. The total values, with and without timber, are shown in the "County Rank by Gross Value of Agricultural Production, 2009-2010" table on page 3. At \$68.0 million, Humboldt County leads the State with 34.1 percent of the State's total timber value.

County Rank by Gross Value of Agricultural Production, 2009-2010 1/

County	Rank Without Timber				Percent Change	Rank With Timber					
	2009		2010			Timber Value	2009		2010		Percent Change
	\$1,000	Rank	\$1,000	Rank			\$1,000	Rank	\$1,000	Rank	
Fresno	5,345,603	(1)	5,943,848	(1)	11.2	300	5,345,806	(1)	5,944,148	(1)	11.2
Tulare	4,046,355	(2)	4,863,637	(2)	20.2	69	4,046,448	(2)	4,863,706	(2)	20.2
Kern	3,615,431	(4)	4,757,229	(3)	31.6	32	3,615,573	(4)	4,757,261	(3)	31.6
Monterey	4,033,718	(3)	4,006,236	(4)	-0.7	4	4,033,722	(3)	4,006,240	(4)	-0.7
Merced	2,460,474	(5)	2,733,489	(5)	11.1	6	2,460,480	(5)	2,733,495	(5)	11.1
Stanislaus	2,312,670	(6)	2,572,433	(6)	11.2	0	2,312,670	(6)	2,572,433	(6)	11.2
San Joaquin	2,000,474	(7)	1,960,719	(7)	-2.0	2	2,000,477	(7)	1,960,721	(7)	-2.0
Ventura	1,621,575	(8)	1,856,684	(8)	14.5	14	1,621,584	(8)	1,856,698	(8)	14.5
Kings	1,320,262	(11)	1,717,970	(9)	30.1	0	1,320,262	(11)	1,717,970	(9)	30.1
San Diego	1,548,189	(9)	1,648,563	(10)	6.5	9	1,548,196	(9)	1,648,572	(10)	6.5
Imperial	1,452,970	(10)	1,598,534	(11)	10.0	0	1,452,970	(10)	1,598,534	(11)	10.0
Madera	963,128	(14)	1,348,280	(12)	40.0	255	963,164	(14)	1,348,535	(12)	40.0
Santa Barbara	1,241,400	(12)	1,219,996	(13)	-1.7	0	1,241,400	(12)	1,219,996	(13)	-1.7
Riverside	1,015,755	(13)	1,093,651	(14)	7.7	0	1,015,755	(13)	1,093,651	(14)	7.7
San Luis Obispo	623,095	(16)	712,808	(15)	14.4	7	623,102	(16)	712,815	(15)	14.4
Colusa	598,805	(17)	640,802	(16)	7.0	0	598,805	(17)	640,802	(16)	7.0
Butte	540,085	(18)	627,819	(17)	16.2	4,741	544,514	(18)	632,560	(17)	16.2
Sonoma	649,518	(15)	593,822	(18)	-8.6	4,020	650,030	(15)	597,842	(18)	-8.0
Glenn	481,675	(21)	566,240	(19)	17.6	0	481,675	(21)	566,240	(19)	17.6
Santa Cruz	488,106	(20)	527,750	(20)	8.1	4,776	491,635	(20)	532,526	(20)	8.3
Sutter	474,169	(22)	521,072	(21)	9.9	0	474,169	(22)	521,072	(21)	9.9
Napa	502,237	(19)	461,480	(22)	-8.1	0	502,237	(19)	461,480	(22)	-8.1
Yolo	462,133	(23)	443,541	(23)	-4.0	0	462,133	(23)	443,541	(23)	-4.0
San Bernardino	355,347	(25)	427,579	(24)	20.3	0	355,347	(25)	427,579	(24)	20.3
Sacramento	365,179	(24)	372,286	(25)	1.9	20	365,204	(24)	372,306	(25)	1.9
Santa Clara	260,139	(26)	265,610	(26)	2.1	532	260,718	(26)	266,142	(26)	2.1
Solano	251,923	(27)	259,400	(27)	3.0	15	251,937	(27)	259,415	(27)	3.0
San Benito	242,917	(28)	255,456	(28)	5.2	0	242,917	(28)	255,456	(28)	5.2
Tehama	182,433	(33)	227,574	(29)	24.7	5,784	187,800	(33)	233,358	(29)	24.3
Siskiyou	200,571	(29)	195,713	(30)	-2.4	22,976	212,219	(29)	218,689	(30)	3.0
Yuba	195,576	(30)	192,544	(31)	-1.6	2,934	198,182	(30)	195,478	(31)	-1.4
Los Angeles	189,560	(32)	179,753	(32)	-5.2	0	189,560	(32)	179,753	(33)	-5.2
Orange	192,101	(31)	150,374	(33)	-21.7	25	192,124	(31)	150,399	(34)	-21.7
San Mateo	148,465	(34)	141,409	(34)	-4.8	2,291	149,226	(35)	143,700	(36)	-3.7
Mendocino	118,155	(36)	116,393	(35)	-1.5	29,256	130,471	(36)	145,649	(35)	11.6
Humboldt	134,380	(35)	112,971	(36)	-15.9	68,039	161,875	(34)	181,010	(32)	11.8
Modoc	107,009	(37)	107,010	(37)	0.0	2,293	107,774	(37)	109,303	(38)	1.4
Shasta	93,513	(38)	93,618	(38)	0.1	16,665	100,545	(38)	110,283	(37)	9.7
Contra Costa	64,423	(42)	79,624	(39)	23.6	8	64,430	(42)	79,632	(39)	23.6
Lassen	66,443	(40)	69,813	(40)	5.1	4,687	68,341	(39)	74,500	(40)	9.0
Lake	65,113	(41)	64,065	(41)	-1.6	208	65,113	(41)	64,273	(42)	-1.3
Placer	66,481	(39)	61,030	(42)	-8.2	4,603	67,263	(40)	65,633	(41)	-2.4
Marin	52,718	(43)	56,540	(43)	7.2	0	52,718	(43)	56,540	(43)	7.2
Del Norte	38,135	(44)	37,811	(44)	-0.8	2,441	39,397	(44)	40,252	(44)	2.2
Mono	32,269	(47)	37,469	(45)	16.1	7	32,280	(47)	37,476	(45)	16.1
Alameda	37,167	(45)	35,296	(46)	-5.0	16	37,178	(46)	35,312	(46)	-5.0
El Dorado	35,565	(46)	33,750	(47)	-5.1	1,202	37,341	(45)	34,952	(47)	-6.4
Mariposa	25,555	(48)	26,781	(48)	4.8	421	26,203	(48)	27,202	(49)	3.8
Amador	22,438	(49)	23,004	(49)	2.5	719	22,877	(50)	23,723	(50)	3.7
Inyo	19,127	(51)	21,547	(50)	12.7	6	19,127	(53)	21,553	(53)	12.7
Tuolumne	18,379	(52)	20,721	(51)	12.7	1,155	20,215	(52)	21,876	(51)	8.2
Plumas	19,759	(50)	20,019	(52)	1.3	10,059	23,830	(49)	30,078	(48)	26.2
Calaveras	17,859	(53)	19,866	(53)	11.2	1,830	20,333	(51)	21,696	(52)	6.7
Nevada	9,647	(54)	9,405	(54)	-2.5	1,042	12,336	(54)	10,447	(55)	-15.3
Trinity	2,320	(57)	8,186	(55)	252.8	3,733	5,445	(56)	11,919	(54)	118.9
Sierra	5,134	(55)	6,200	(56)	20.8	2,180	5,741	(55)	8,380	(56)	46.0
Alpine	4,680	(56)	5,048	(57)	7.9	124	4,680	(57)	5,172	(57)	10.5
San Francisco	1,091	(58)	732	(58)	-32.9	0	1,091	(58)	732	(58)	-32.9
Grand Total 2/	41,439,398		46,151,198		11.4	199,506	41,538,645		46,350,706		11.6

1/ Totals vary slightly from totals published by counties due to classification differences between county and State reports.

2/ Totals may not add due to rounding.

Source: County Agricultural Commissioners' Reports and State Board of Equalization, Timber Tax Division.

County Gross Value of Agricultural Production by Commodity Group, 2009-2010

County	Field Crops		Seed Crops		Vegetable Crops	
	2009	2010	2009	2010	2009	2010
	<i>\$1,000</i>					
Del Norte	1,922	2,533	-	-	109	135
Humboldt	10,483	13,392	-	-	1,184	1,213
Mendocino	9,515	11,108	-	-	1,000	1,200
District Total	21,920	27,033	-	-	2,293	2,548
Shasta	31,338	27,949	-	-	1,881	1,186
Siskiyou	85,265	78,566	666	384	10,081	5,139
Trinity	988	956	-	-	-	-
District Total	117,590	107,471	666	384	11,962	6,325
Lassen	39,932	35,589	3,752	1,976	1,971	1,985
Modoc	77,205	77,206	-	-	9,457	9,458
Plumas	5,715	7,127	-	-	-	-
District Total	122,852	119,921	3,752	1,976	11,428	11,443
Alameda	3,731	4,482	-	-	838	897
Contra Costa	10,646	12,947	-	-	29,235	31,560
Lake	1,621	1,358	-	-	193	195
Marin	8,918	5,507	-	-	2,005	2,488
Monterey	14,972	15,230	9,306	9,984	2,631,763	2,677,072
Napa	366	146	-	-	201	323
San Benito	8,912	7,714	1,425	1,209	152,914	159,512
San Francisco	-	-	-	-	718	288
San Luis Obispo	15,178	18,545	-	-	187,309	176,666
San Mateo	1,341	1,192	-	-	15,588	15,355
Santa Clara	4,140	3,640	1,600	1,677	130,774	140,455
Santa Cruz	90	90	-	-	46,978	61,820
Sonoma	7,506	9,055	-	-	8,067	8,212
District Total	77,419	79,906	12,331	12,870	3,206,583	3,274,843
Butte	199,383	198,969	14,881	13,566	2,431	795
Colusa	276,342	308,330	53,169	71,854	84,864	51,482
Glenn	206,617	212,190	32,918	23,988	2,142	130
Sacramento	50,663	59,714	4,183	1,104	31,787	28,311
Solano	50,073	57,072	15,859	14,392	64,184	63,698
Sutter	224,392	233,498	35,344	38,316	31,417	31,175
Tehama	14,146	19,435	367	556	250	250
Yolo	121,881	131,734	33,425	40,738	158,892	132,563
Yuba	85,418	78,146	396	580	2,402	1,377
District Total	1,228,914	1,299,089	190,541	205,094	378,368	309,781
Fresno	310,960	378,426	43,926	50,957	1,463,659	1,526,617
Kern	385,632	521,700	7,305	6,767	443,188	610,758
Kings	312,067	448,935	5,652	7,433	177,931	206,465
Madera	58,976	77,546	2,246	1,870	17,345	23,275
Merced	439,948	478,800	3,746	3,175	223,880	164,929
San Joaquin	226,995	232,253	4,408	5,510	344,609	232,861
Stanislaus	195,969	251,690	1,153	643	197,269	226,013
Tulare	389,737	458,904	2,550	1,625	28,776	20,245
District Total	2,320,284	2,848,254	70,986	77,980	2,896,657	3,011,163
Alpine	2,622	2,626	-	-	-	-
Amador	3,473	3,933	-	-	834	728
Calaveras	3,559	3,594	-	-	200	200
El Dorado	4,364	4,365	-	-	-	-
Inyo	4,768	5,208	-	-	-	-
Mariposa	6,123	5,800	-	-	-	3
Mono	13,054	14,730	-	-	32	246
Nevada	2,925	2,925	-	-	-	-
Placer	33,076	34,213	-	-	500	800
Sierra	1,749	2,391	-	-	-	-
Tuolumne	2,883	3,521	-	-	137	153
District Total	78,593	83,306	-	-	1,703	2,130
Imperial	323,853	372,406	54,827	50,681	676,687	794,984
Los Angeles	14,246	14,678	-	-	28,747	31,104
Orange	876	936	-	-	13,598	16,369
Riverside	77,897	94,385	-	-	209,572	268,729
San Bernardino	18,493	17,238	-	-	28,686	23,346
San Diego	8,270	6,004	-	-	185,748	168,917
Santa Barbara	12,272	12,091	4,001	4,041	469,315	436,288
Ventura	7,136	7,354	-	-	504,425	528,582
District Total	463,042	525,091	58,828	54,722	2,116,779	2,268,319
STATE TOTAL	4,430,615	5,090,071	337,104	353,027	8,625,772	8,886,552

County Gross Value of Agricultural Production by Commodity Group, 2009-2010

County	Fruit and Nut Crops		Nursery, Flowers and Foliage		Apiary Products	
	2009	2010	2009	2010	2009	2010
	<i>\$1,000</i>					
Del Norte	504	600	12,085	11,715	0	0
Humboldt	4,667	2,809	49,415	40,230	0	0
Mendocino	91,537	87,136	2,900	3,187	0	0
District Total	96,708	90,545	64,399	55,132	0	0
Shasta	2,771	4,259	32,471	32,104	5,131	5,430
Siskiyou	289	11,137	76,188	74,261	0	0
Trinity	337	5,412	29	853	0	0
District Total	3,397	20,808	108,687	107,218	5,131	5,430
Lassen	0	0	7,109	10,538	0	0
Modoc	552	552	50	50	0	0
Plumas	250	250	0	0	0	0
District Total	802	802	7,160	10,588	0	0
Alameda	14,144	11,994	13,679	11,476	0	0
Contra Costa	15,324	13,242	2,461	2,627	233	326
Lake	57,734	57,623	3,533	2,961	0	0
Marin	784	1,061	1,000	992	0	0
Monterey	1,042,685	987,693	294,572	266,121	46	242
Napa	495,558	454,712	2,273	2,467	0	0
San Benito	37,112	44,480	20,413	18,392	0	0
San Francisco	0	0	373	444	0	0
San Luis Obispo	271,474	365,750	93,759	94,708	0	0
San Mateo	2,359	2,283	125,985	119,328	170	270
Santa Clara	21,912	16,704	95,588	96,733	0	0
Santa Cruz	316,910	341,298	118,528	118,786	0	0
Sonoma	466,570	397,029	23,644	22,983	378	335
District Total	2,742,566	2,693,869	795,809	758,018	827	1,173
Butte	280,577	371,088	26,756	23,843	7,154	7,078
Colusa	168,637	187,863	0	0	7,858	8,658
Glenn	160,402	235,010	4,897	4,509	13,894	13,926
Sacramento	145,850	144,270	27,494	28,925	90	3
Solano	48,192	54,875	33,499	23,352	1,872	1,778
Sutter	159,656	188,811	9,722	13,309	2,562	3,259
Tehama	126,732	158,851	2,998	2,931	7,351	7,053
Yolo	112,669	101,509	9,912	9,432	5,437	5,947
Yuba	91,560	94,604	10	15	545	606
District Total	1,294,276	1,536,880	115,289	106,316	46,762	48,308
Fresno	2,301,605	2,704,654	46,210	37,478	36,513	35,702
Kern	2,021,780	2,655,666	63,861	67,405	41,583	54,650
Kings	253,440	319,122	0	0	5,982	6,549
Madera	551,948	832,749	26,081	24,445	20,275	27,588
Merced	394,399	473,295	38,661	45,855	23,384	27,596
San Joaquin	951,004	935,055	75,844	76,951	25,059	13,349
Stanislaus	800,358	736,520	96,795	114,363	46,847	48,630
Tulare	1,787,810	2,092,620	72,747	64,621	36,315	47,724
District Total	9,062,344	10,749,681	420,199	431,118	235,958	261,788
Alpine	0	0	0	0	0	0
Amador	11,582	10,536	269	249	0	0
Calaveras	4,491	4,349	410	420	91	91
El Dorado	19,964	17,027	3,735	3,999	720	745
Inyo	140	168	2,285	1,614	1,938	2,423
Mariposa	599	660	64	62	70	113
Mono	0	57	0	0	0	0
Nevada	2,061	1,775	471	452	0	0
Placer	6,795	6,420	6,902	5,049	76	40
Sierra	48	35	0	0	0	0
Tuolumne	1,792	1,696	285	257	63	63
District Total	47,473	42,723	14,421	12,102	2,958	3,475
Imperial	47,765	51,294	3,076	4,146	3,562	4,001
Los Angeles	21,264	18,412	119,903	107,891	246	745
Orange	51,063	42,760	126,317	90,043	0	0
Riverside	296,852	315,716	206,500	169,342	5,018	4,632
San Bernardino	14,129	21,646	26,147	28,660	0	252
San Diego	219,804	258,319	1,054,314	1,107,558	2,056	2,168
Santa Barbara	547,396	558,195	176,658	178,116	0	0
Ventura	867,759	1,085,677	234,063	227,405	698	1,505
District Total	2,066,031	2,352,019	1,946,977	1,913,161	11,579	13,303
STATE TOTAL	15,313,596	17,487,327	3,472,941	3,393,652	303,215	333,476

County Gross Value of Agricultural Production by Commodity Group, 2009-2010

County	Livestock		Livestock Products		Poultry	
	2009	2010	2009	2010	2009	2010
	\$1,000					
Del Norte	11,752	11,903	11,764	10,925	0	0
Humboldt	23,889	12,583	44,742	42,744	0	0
Mendocino	7,230	7,718	5,974	6,044	0	0
District Total	42,870	32,204	62,480	59,713	0	0
Shasta	19,922	22,690	0	0	0	0
Siskiyou	24,192	21,045	3,891	5,181	0	0
Trinity	966	965	0	0	0	0
District Total	45,081	44,700	3,891	5,181	0	0
Lassen	13,551	19,596	128	129	0	0
Modoc	19,744	19,744	0	0	0	0
Plumas	13,794	12,642	0	0	0	0
District Total	47,090	51,982	128	129	0	0
Alameda	4,775	6,447	0	0	0	0
Contra Costa	6,525	18,922	0	0	0	0
Lake	1,931	1,745	102	182	0	0
Marin	7,520	9,445	25,674	30,793	6,817	6,254
Monterey	31,029	40,562	9,345	9,331	0	0
Napa	3,326	3,090	513	743	0	0
San Benito	12,169	14,175	9,972	9,974	0	0
San Francisco	0	0	0	0	0	0
San Luis Obispo	55,375	57,139	0	0	0	0
San Mateo	2,358	2,309	664	672	0	0
Santa Clara	6,125	6,401	0	0	0	0
Santa Cruz	5,600	5,756	0	0	0	0
Sonoma	11,259	14,302	91,060	98,613	41,035	43,293
District Total	147,992	180,293	137,330	150,308	47,851	49,547
Butte	8,205	11,589	697	891	0	0
Colusa	7,916	12,591	19	24	0	0
Glenn	16,042	18,513	44,308	57,492	453	478
Sacramento	30,038	33,162	40,261	50,149	34,813	26,648
Solano	27,585	30,374	10,658	13,859	0	0
Sutter	9,707	12,426	1,226	96	140	179
Tehama	18,569	23,110	12,020	15,387	0	0
Yolo	15,696	16,822	4,221	4,796	0	0
Yuba	5,879	5,889	9,366	11,328	0	0
District Total	139,638	164,477	122,776	154,022	35,407	27,305
Fresno	324,118	314,562	302,856	398,180	504,939	486,160
Kern	181,944	284,236	439,211	523,634	825	367
Kings	132,110	130,901	415,321	565,133	14,399	30,516
Madera	75,052	84,695	186,674	239,919	24,531	36,193
Merced	223,758	236,446	669,215	873,369	360,191	336,233
San Joaquin	80,326	74,701	258,434	342,726	18,022	20,308
Stanislaus	134,997	170,834	468,293	604,911	331,950	384,462
Tulare	481,377	560,387	1,238,379	1,610,427	8,664	7,084
District Total	1,633,682	1,856,762	3,978,383	5,158,299	1,263,521	1,301,323
Alpine	2,058	2,422	0	0	0	0
Amador	6,246	7,519	34	39	0	0
Calaveras	5,895	7,148	21	22	3,192	4,042
El Dorado	6,782	7,614	0	0	0	0
Inyo	9,997	12,134	0	0	0	0
Mariposa	14,403	15,734	34	52	1,639	1,702
Mono	19,184	22,436	0	0	0	0
Nevada	4,109	4,173	80	80	0	0
Placer	17,632	12,908	1,500	1,600	0	0
Sierra	3,337	3,774	0	0	0	0
Tuolumne	13,180	14,981	39	50	0	0
District Total	102,823	110,843	1,708	1,843	4,831	5,744
Imperial	343,041	320,674	160	348	0	0
Los Angeles	238	146	4,915	6,777	0	0
Orange	244	262	0	0	3	4
Riverside	23,348	22,922	120,493	146,603	0	0
San Bernardino	39,172	44,219	187,016	241,297	3,163	5,253
San Diego	14,790	19,119	6,285	7,890	1,734	2,683
Santa Barbara	23,608	23,176	8,151	8,089	0	0
Ventura	2,388	1,900	0	0	5,106	4,261
District Total	446,829	432,418	327,019	411,004	10,007	12,201
STATE TOTAL	2,606,004	2,873,678	4,633,714	5,940,499	1,361,617	1,396,120

County Gross Value of Agricultural Production by Commodity Group, 2009-2010

County	Poultry Products		Total Value		Value Rank	
	2009	2010	2009	2010	2009	2010
	<i>\$1,000</i>					
Del Norte	0	0	38,135	37,811	44	44
Humboldt	0	0	134,380	112,971	35	36
Mendocino	0	0	118,155	116,393	36	35
District Total	0	0	290,670	267,175		
Shasta	0	0	93,513	93,618	38	38
Siskiyou	0	0	200,571	195,713	29	30
Trinity	0	0	2,320	8,186	57	55
District Total	0	0	296,405	297,517		
Lassen	0	0	66,443	69,813	40	40
Modoc	0	0	107,009	107,010	37	37
Plumas	0	0	19,759	20,019	50	52
District Total	0	0	193,211	196,842		
Alameda	0	0	37,167	35,296	45	46
Contra Costa	0	0	64,423	79,624	42	39
Lake	0	0	65,113	64,065	41	41
Marin	0	0	52,718	56,540	43	43
Monterey	0	0	4,033,718	4,006,236	3	4
Napa	0	0	502,237	461,480	19	22
San Benito	0	0	242,917	255,456	28	28
San Francisco	0	0	1,091	732	58	58
San Luis Obispo	0	0	623,095	712,808	16	15
San Mateo	0	0	148,465	141,409	34	34
Santa Clara	0	0	260,139	265,610	26	26
Santa Cruz	0	0	488,106	527,750	20	20
Sonoma	0	0	649,518	593,822	15	18
District Total	0	0	7,168,707	7,200,827		
Butte	2	0	540,085	627,819	18	17
Colusa	0	0	598,805	640,802	17	16
Glenn	2	4	481,675	566,240	21	19
Sacramento	0	0	365,179	372,286	24	25
Solano	0	0	251,923	259,400	27	27
Sutter	3	3	474,169	521,072	22	21
Tehama	0	0	182,433	227,574	33	29
Yolo	0	0	462,133	443,541	23	23
Yuba	0	0	195,576	192,544	30	31
District Total	8	6	3,551,978	3,851,277		
Fresno	10,816	11,111	5,345,603	5,943,848	1	1
Kern	30,102	32,046	3,615,431	4,757,229	4	3
Kings	3,361	2,917	1,320,262	1,717,970	11	9
Madera	0	0	963,128	1,348,280	14	12
Merced	83,292	93,791	2,460,474	2,733,489	5	5
San Joaquin	15,773	27,005	2,000,474	1,960,719	7	7
Stanislaus	39,039	34,367	2,312,670	2,572,433	6	6
Tulare	0	0	4,046,355	4,863,637	2	2
District Total	182,383	201,237	22,064,397	25,897,606		
Alpine	0	0	4,680	5,048	56	57
Amador	0	0	22,438	23,004	49	49
Calaveras	0	0	17,859	19,866	53	53
El Dorado	0	0	35,565	33,750	46	47
Inyo	0	0	19,127	21,547	51	50
Mariposa	2,625	2,655	25,555	26,781	48	48
Mono	0	0	32,269	37,469	47	45
Nevada	0	0	9,647	9,405	54	54
Placer	0	0	66,481	61,030	39	42
Sierra	0	0	5,134	6,200	55	56
Tuolumne	0	0	18,379	20,721	52	51
District Total	2,625	2,655	257,134	264,821		
Imperial	0	0	1,452,970	1,598,534	10	11
Los Angeles	1	1	189,560	179,753	32	32
Orange	0	0	192,101	150,374	31	33
Riverside	76,076	71,323	1,015,755	1,093,651	13	14
San Bernardino	38,541	45,668	355,347	427,579	25	24
San Diego	55,188	75,905	1,548,189	1,648,563	9	10
Santa Barbara	0	0	1,241,400	1,219,996	12	13
Ventura	0	0	1,621,575	1,856,684	8	8
District Total	169,806	192,897	7,616,897	8,175,134		
STATE TOTAL	354,821	396,796	41,439,398	46,151,198		

Commodity Rank and Leading Counties by Gross Value of Agricultural Production, 2010

Commodity	State		Five Leading Counties by Rank and Percentage of State Total				
	Rank	Value	1	2	3	4	5
		\$1,000					
Milk and Cream	1	5,818,301	Tulare	Merced	Stanislaus	Kings	Kern
Percent of Value			27.6	14.8	10.3	9.5	9.0
Grapes (All)	2	4,331,462	Fresno	Kern	Tulare	Napa	Sonoma
Percent of Value			19.2	16.3	11.3	10.5	9.0
Almonds	3	2,851,971	Kern	Fresno	Stanislaus	Merced	Madera
Percent of Value			21.0	20.4	13.7	10.0	8.9
Nursery Products	4	2,593,528	San Diego	Monterey	Ventura	Riverside	Stanislaus
Percent of Value			27.5	8.2	6.9	6.4	4.4
Cattle & Calves (All)	5	2,580,905	Tulare	Fresno	Imperial	Kern	Merced
Percent of Value			19.4	11.3	10.4	10.3	8.7
Lettuce	6	2,067,248	Monterey	Imperial	Fresno	Santa Barbara	San Benito
Percent of Value			63.7	14.6	9.1	4.9	2.3
Berries, Strawberries	7	2,067,187	Monterey	Ventura	Santa Barbara	Santa Cruz	San Luis Obispo
Percent of Value			36.3	26.2	19.0	9.5	6.0
Pistachios	8	1,259,354	Kern	Madera	Fresno	Tulare	Kings
Percent of Value			42.4	19.0	17.7	11.2	5.8
Oranges	9	1,178,778	Tulare	Kern	Fresno	Ventura	Riverside
Percent of Value			52.3	23.1	17.6	2.7	1.2
Walnuts (English)	10	1,056,257	San Joaquin	Butte	Stanislaus	Tulare	Tehama
Percent of Value			19.6	16.4	11.0	9.1	7.6
Rice (Excl. Seed)	11	1,000,084	Colusa	Sutter	Butte	Glenn	Yuba
Percent of Value			27.0	20.3	18.2	16.9	7.1
Chickens	12	997,441	Fresno	Stanislaus	Merced	San Joaquin	San Bernardino
Percent of Value			40.0	30.9	27.6	0.8	0.4
Tomatoes (Processing)	13	984,217	Fresno	Kings	Stanislaus	Yolo	San Joaquin
Percent of Value			35.5	13.7	10.0	8.9	7.7
Alfalfa Hay	14	902,615	Imperial	Kern	Tulare	Merced	Fresno
Percent of Value			14.3	11.7	9.0	8.6	8.3
Flowers and Foliage	15	771,479	San Diego	Santa Barbara	Santa Cruz	Monterey	Ventura
Percent of Value			51.2	14.0	9.8	6.8	6.1
Silage, All	16	767,138	Tulare	Stanislaus	Merced	Kings	Fresno
Percent of Value			33.0	13.9	13.7	10.5	8.2
Broccoli	17	647,822	Monterey	Santa Barbara	Imperial	Fresno	San Luis Obispo
Percent of Value			45.9	18.9	11.6	9.8	8.6
Cotton Lint	18	604,315	Kings	Fresno	Kern	Merced	Tulare
Percent of Value			35.3	22.0	19.7	11.6	4.7
Carrots	19	514,380	Kern	Imperial	Monterey	Riverside	Fresno
Percent of Value			76.1	12.5	4.0	2.4	2.2
Tomatoes (Fresh Market)	20	485,321	Fresno	San Diego	Stanislaus	Merced	San Joaquin
Percent of Value			48.6	17.9	10.1	9.5	8.3
Cherries	21	471,535	San Joaquin	Kern	Fresno	Stanislaus	Kings
Percent of Value			39.1	20.5	16.1	10.1	6.0
Peaches (All)	22	444,555	Fresno	Tulare	Stanislaus	Sutter	Merced
Percent of Value			32.8	19.4	12.3	7.3	6.2
Lemons	23	441,189	Ventura	Riverside	Tulare	Kern	San Diego
Percent of Value			39.6	15.6	12.1	9.9	8.8
Celery	24	436,252	Ventura	Monterey	Santa Barbara	Imperial	San Benito
Percent of Value			41.8	40.3	9.4	2.9	2.1
Avocados	25	418,342	Ventura	San Diego	Santa Barbara	San Luis Obispo	Riverside
Percent of Value			35.5	35.2	12.4	8.6	5.6

Commodity Rank and Leading Counties by Gross Value of Agricultural Production, 2010

Commodity	State		Five Leading Counties by Rank and Percentage of State Total				
	Rank	Value	1	2	3	4	5
		\$1,000					
Eggs (Chicken)	26	392,368	Merced	San Diego	Riverside	San Bernardino	Stanislaus
Percent of Value			23.9	19.3	18.2	11.6	8.2
Onions	27	324,410	Fresno	Imperial	Kern	Los Angeles	San Joaquin
Percent of Value			46.4	23.4	12.8	5.7	4.0
Tangerines	28	321,012	Kern	Tulare	Madera	Riverside	Ventura
Percent of Value			48.7	36.0	6.2	4.7	1.8
Berries, Raspberries	29	301,602	Ventura	Santa Cruz	Monterey	San Bernardino	
Percent of Value			55.5	30.4	14.1	0.0	
Wheat (Excl. Seed)	30	295,357	Fresno	Imperial	Kern	Kings	Tulare
Percent of Value			15.3	14.4	13.3	11.9	10.7
Garlic	31	292,938	Fresno	Kern	Santa Clara	Mono	Orange
Percent of Value			90.4	9.0	0.5	0.1	0.0
Nectarines	32	283,987	Fresno	Tulare	Kings	Kern	Los Angeles
Percent of Value			49.0	38.4	5.9	4.1	1.4
Bell Peppers	33	276,273	Riverside	Ventura	Kern	Fresno	San Benito
Percent of Value			32.5	16.4	15.7	8.0	7.8
Plums	34	257,846	Fresno	Tulare	Kern	Kings	Madera
Percent of Value			55.9	29.6	8.3	5.2	0.5
Turkeys	35	253,169	Stanislaus	Fresno	Merced	Kings	San Joaquin
Percent of Value			28.5	28.2	23.7	12.1	4.7
Spinach	36	212,734	Monterey	Imperial	Stanislaus	San Benito	Ventura
Percent of Value			59.9	9.6	7.1	6.2	5.5
Plums, Dried	37	212,574	Sutter	Butte	Yuba	Tehama	Glenn
Percent of Value			23.0	20.0	13.0	11.1	10.2
Potatoes (Incl. Seed)	38	210,289	Kern	San Joaquin	Modoc	Riverside	Siskiyou
Percent of Value			62.3	11.1	7.0	6.2	6.2
Cauliflower	39	206,073	Monterey	Santa Barbara	Imperial	San Luis Obispo	Riverside
Percent of Value			53.6	23.1	13.1	4.5	3.8
Other Pasture and Range	40	198,730	Kern	Merced	Stanislaus	Tulare	Monterey
Percent of Value			7.8	7.1	6.7	5.6	5.4
Salad Greens NEC	41	191,792	Monterey	Imperial	Santa Clara	Kern	Fresno
Percent of Value			75.1	22.3	2.5	0.1	0.0
Potatoes, Sweet	42	178,215	Merced	Stanislaus	Kern	San Bernardino	
Percent of Value			85.8	10.2	4.0	0.0	
Mushrooms	43	174,760	Monterey	Santa Clara	Ventura	San Diego	Fresno
Percent of Value			39.6	34.8	18.1	7.0	0.4
Cantaloupes	44	166,319	Fresno	Imperial	Merced	Stanislaus	Kern
Percent of Value			45.5	32.3	10.8	7.7	2.2
Olives	45	154,982	Tulare	Glenn	Tehama	Fresno	Butte
Percent of Value			47.8	15.9	15.8	5.2	4.7
Corn (For Grain)	46	154,964	San Joaquin	Sacramento	Yolo	Tulare	Glenn
Percent of Value			27.6	12.5	10.8	9.7	9.2
Apples	47	120,727	San Joaquin	Santa Cruz	Fresno	Stanislaus	Kern
Percent of Value			43.2	11.0	9.1	8.4	8.2
Corn (sweet)	48	115,863	Imperial	Fresno	San Joaquin	Contra Costa	Riverside
Percent of Value			33.2	28.1	12.8	11.4	9.7
Pears	49	108,499	Sacramento	Fresno	Lake	Mendocino	Tulare
Percent of Value			36.1	27.3	17.6	9.5	3.0
Cottonseed	50	105,145	Kings	Kern	Fresno	Merced	Tulare
Percent of Value			29.4	27.7	16.9	10.7	7.2

Commodity Rank and Leading Counties by Gross Value of Agricultural Production, 2010

Commodity	State		Five Leading Counties by Rank and Percentage of State Total				
	Rank	Value	1	2	3	4	5
		\$1,000					
Veg and Vinecrop Seeds	51	103,549	Colusa	Sutter	Imperial	Glenn	Fresno
Percent of Value			42.0	12.5	9.3	8.6	8.0
Watermelon	52	96,677	Fresno	San Joaquin	Imperial	Riverside	Kern
Percent of Value			45.0	16.2	13.6	12.9	12.2
Dry Beans	53	94,710	Stanislaus	Tulare	Fresno	San Joaquin	Sutter
Percent of Value			43.2	9.1	6.5	5.7	5.2
Irrigated Pasture	54	93,204	Tulare	Siskiyou	Modoc	Stanislaus	Fresno
Percent of Value			17.5	7.8	5.9	5.8	5.4
Cabbage	55	78,110	Monterey	Ventura	Imperial	Santa Barbara	San Luis Obispo
Percent of Value			43.2	28.7	8.8	6.2	5.1
Grapefruit	56	70,786	Riverside	San Diego	Tulare	Kern	Imperial
Percent of Value			50.1	19.5	13.1	13.0	2.4
Sugar Beets	57	70,100	Imperial	Fresno			
Percent of Value			100.0	0.0			
Sheep and Lambs	58	68,607	Kern	Fresno	Solano	Imperial	Merced
Percent of Value			25.1	16.9	9.3	6.4	5.3
Honey	59	67,761	Tulare	Kern	Stanislaus	Merced	Fresno
Percent of Value			45.8	12.3	10.2	8.2	6.4
Sudan Hay	60	65,580	Imperial	Solano	Merced	Tulare	Stanislaus
Percent of Value			71.1	9.5	8.5	6.2	1.8
Berries, Blueberries	61	64,176	Tulare	San Joaquin	Fresno	Kern	Glenn
Percent of Value			42.6	36.9	16.0	3.0	0.8
Grain Hay	62	60,063	Fresno	Kern	Merced	Modoc	Yolo
Percent of Value			16.6	15.8	14.7	7.5	5.1
Dates	63	58,526	Riverside	Imperial	Fresno	San Bernardino	
Percent of Value			62.4	35.5	2.0	0.1	
Asparagus	64	57,102	San Joaquin	Monterey	Fresno	Kern	Imperial
Percent of Value			48.5	27.1	20.1	3.4	0.8
Apricots	65	54,720	Stanislaus	Fresno	Kings	Kern	San Joaquin
Percent of Value			37.3	22.5	12.0	9.9	5.1
Artichokes	66	53,526	Monterey	Riverside	San Mateo	Imperial	Fresno
Percent of Value			89.4	9.4	0.6	0.4	0.1
Alfalfa seed	67	53,228	Fresno	Imperial	Madera	Lassen	Sutter
Percent of Value			54.2	41.9	3.2	0.7	0.0
Orchard Biomass	68	43,151	Sutter	Stanislaus	Kern	Merced	Tulare
Percent of Value			36.0	34.6	12.2	8.1	3.2
Honeydew Melons	69	40,269	Fresno	Sutter	Imperial	Riverside	Stanislaus
Percent of Value			53.7	19.1	17.1	8.7	1.4
Kiwifruit	70	38,917	Tulare	Butte	Yuba	Fresno	Madera
Percent of Value			55.5	21.0	9.3	7.0	2.9

Total Gross Value of Agricultural Production by Commodity Groups and Leading Counties, 2010

Commodity Group	Total Value	Five Leading Counties Within Group		
		County	Value	Portion of State Total
	<i>\$1,000</i>		<i>\$1,000</i>	<i>Percent</i>
ALL COMMODITIES	46,151,198	Fresno	5,943,848	13
		Tulare	4,863,637	11
		Kern	4,757,229	10
		Monterey	4,006,236	9
		Merced	2,733,489	6
ALL CROPS	35,210,629	Fresno	4,698,133	13
		Monterey	3,956,100	11
		Kern	3,862,296	11
		Tulare	2,638,015	8
		Ventura	1,849,018	5
Field and Seed	5,443,098	Kern	528,467	10
		Merced	481,975	9
		Tulare	460,529	9
		Kings	456,368	8
		Fresno	429,383	8
Fruit and Nut	17,487,327	Fresno	2,704,654	16
		Kern	2,655,666	15
		Tulare	2,092,620	12
		Ventura	1,085,677	6
		Monterey	987,693	6
Vegetable	8,886,552	Monterey	2,677,072	30
		Fresno	1,526,617	17
		Imperial	794,984	9
		Kern	610,758	7
		Ventura	528,582	6
Nursery Products, Flowers and Foliage	3,393,652	San Diego	1,107,558	33
		Monterey	266,121	8
		Ventura	227,405	7
		Santa Barbara	178,116	5
		Riverside	169,342	5
ALL LIVESTOCK, POULTRY AND APIARY	10,940,569	Tulare	2,225,622	20
		Merced	1,567,435	14
		Fresno	1,245,715	11
		Stanislaus	1,243,204	11
		Kern	894,933	8
Livestock and Products	8,814,177	Tulare	2,170,814	25
		Merced	1,109,815	13
		Kern	807,870	9
		Stanislaus	775,745	9
		Fresno	712,742	8
Poultry and Products	1,792,917	Fresno	497,271	28
		Merced	430,024	24
		Stanislaus	418,829	23
		San Diego	78,588	4
		Riverside	71,323	4
Apiary Products	333,476	Kern	54,650	16
		Stanislaus	48,630	15
		Tulare	47,724	14
		Fresno	35,702	11
		Merced	27,596	8

Leading Commodities for Gross Value of Agricultural Production by County, 2010 1/

\$1,000

Alameda		Alpine		Amador	
1 GRAPES, WINE	11,419	1 CATTLE & CALVES, UNSPECIFIED	2,422	1 GRAPES, WINE	10,383
2 NURSERY, WOODY ORNAMNTALS	10,190	2 PASTURE, RANGE	2,394	2 CATTLE, CALVES ONLY	6,540
3 CATTLE & CALVES, UNSPECIFIED	6,231	3 PASTURE, IRRIGATED	188	3 PASTURE, RANGE	2,822
4 PASTURE, RANGE	3,030	4 HAY, OTHER, UNSPECIFIED	44	4 VEGETABLES, UNSPECIFIED	728
5 NURSERY PRODUCTS, MISC.	1,286	5	0	5 LIVESTOCK, UNSPECIFIED	487
6 VEGETABLES, UNSPECIFIED	897	6	0	6 HAY, GRAIN	397
7 HAY, OTHER, UNSPECIFIED	878	7	0	7 GOATS & KIDS, UNSPECIFIED	308
8 FRUITS & NUTS, UNSPECIFIED	575	8	0	8 HAY, ALFALFA	262
9 HAY, ALFALFA	486	9	0	9 NURSERY PRODUCTS, MISC.	249
10 LIVESTOCK, UNSPECIFIED	216	10	0	10 FIELD CROPS, UNSPECIFIED	229
Butte		Calaveras		Colusa	
1 RICE, MILLING	182,248	1 CATTLE & CALVES, UNSPECIFIED	7,002	1 RICE, MILLING	270,362
2 WALNUTS, ENGLISH	173,392	2 POULTRY, UNSPECIFIED	4,042	2 ALMONDS, ALL	144,154
3 ALMONDS, ALL	113,781	3 PASTURE, RANGE	3,201	3 SEED, VEGETABLE & VINECROP	43,539
4 PLUMS, DRIED	42,556	4 GRAPES, WINE	3,120	4 TOMATOES, PROCESSING	35,380
5 NURSERY PRODUCTS, MISC.	23,837	5 WALNUTS, ENGLISH	1,024	5 RICE, SEED	24,681
6 RICE, SEED	10,865	6 NURSERY PRODUCTS, MISC.	300	6 WALNUTS, ENGLISH	21,546
7 CATTLE & CALVES, UNSPECIFIED	10,770	7 PASTURE, IRRIGATED	260	7 VEGETABLES, UNSPECIFIED	16,102
8 FRUITS & NUTS, UNSPECIFIED	10,440	8 VEGETABLES, UNSPECIFIED	200	8 FRUITS & NUTS, UNSPECIFIED	14,608
9 PEACHES, CLINGSTONE	9,690	9 CHRISTMAS TREES & CUT GREENS	120	9 CATTLE & CALVES, UNSPECIFIED	11,074
10 KIWIFRUIT	8,177	10 SHEEP & LAMBS, UNSPECIFIED	106	10 HAY, ALFALFA	10,428
Contra Costa		Del Norte		El Dorado	
1 CATTLE & CALVES, UNSPECIFIED	18,522	1 CATTLE, COWS	8,671	1 APPLES, ALL	9,211
2 CORN, SWEET, ALL	13,249	2 MILK, MARKET, FLUID	7,854	2 CATTLE & CALVES, UNSPECIFIED	5,705
3 VEGETABLES, UNSPECIFIED	10,546	3 NURSERY, BULBS, LILY	7,000	3 GRAPES, WINE	4,899
4 GRAPES, UNSPECIFIED	5,559	4 NURSERY, WOODY ORNAMNTALS	3,525	4 PASTURE, RANGE	4,194
5 TOMATOES, PROCESSING	5,454	5 CATTLE, CALVES ONLY	3,207	5 CHRISTMAS TREES & CUT GREENS	2,219
6 CORN, GRAIN	4,541	6 LIVESTOCK PRODUCTS, MISC.	1,750	6 NURSERY PRODUCTS, MISC.	1,780
7 PASTURE, RANGE	3,110	7 MILK, MANUFACTURING	1,321	7 LIVESTOCK, UNSPECIFIED	1,279
8 CHERRIES, SWEET	2,681	8 HAY, OTHER, UNSPECIFIED	1,031	8 APIARY PRODUCTS, BEES, UNSPEC	745
9 HAY, ALFALFA	2,061	9 PASTURE, IRRIGATED	782	9 PEACHES, UNSPECIFIED	697
10 BEANS, FRESH, UNSPECIFIED	1,792	10 NURSERY PRODUCTS, MISC.	740	10 FRUITS & NUTS, UNSPECIFIED	689
Fresno		Glenn		Humboldt	
1 ALMONDS, ALL	581,230	1 RICE, MILLING	165,762	1 NURSERY PRODUCTS, MISC.	40,230
2 POULTRY, UNSPECIFIED	423,768	2 ALMONDS, ALL	104,397	2 MILK, MARKET, FLUID	30,212
3 GRAPES, RAISIN	399,734	3 WALNUTS, ENGLISH	70,224	3 CATTLE & CALVES, UNSPECIFIED	12,233
4 MILK, MARKET, FLUID	391,453	4 MILK, MARKET, FLUID	54,663	4 PASTURE, RANGE	7,520
5 TOMATOES, PROCESSING	347,208	5 OLIVES	24,705	5 FISH, SHELL	5,819
6 GARLIC, ALL	264,948	6 PLUMS, DRIED	21,580	6 MILK, MANUFACTURING	5,418
7 GRAPES, WINE	247,213	7 CATTLE & CALVES, UNSPECIFIED	17,617	7 PASTURE, IRRIGATED	3,753
8 TOMATOES, FRESH MARKET	236,075	8 CORN, GRAIN	14,325	8 FRUITS & NUTS, UNSPECIFIED	1,561
9 PISTACHIOS	222,480	9 HAY, ALFALFA	9,702	9 LIVESTOCK PRODUCTS, MISC.	1,295
10 ORANGES, NAVEL	180,585	10 SEED, VEGETABLE & VINECROP	8,919	10 SILAGE	1,265
Imperial		Inyo		Kern	
1 CATTLE, HEIFERS & STEERS, FED	267,510	1 CATTLE, STEERS	3,939	1 ALMONDS, ALL	598,773
2 LETTUCE, LEAF	166,052	2 CATTLE, HEIFERS	3,252	2 GRAPES, TABLE	562,004
3 HAY, ALFALFA	129,227	3 HAY, ALFALFA	2,808	3 PISTACHIOS	533,847
4 LETTUCE, HEAD	124,638	4 APIARY PRODUCTS, HONEY	2,423	4 MILK, MARKET, FLUID	516,798
5 VEGETABLES, UNSPECIFIED	80,217	5 CATTLE, COWS	2,201	5 VEGETABLES, UNSPECIFIED	434,186
6 ONIONS	76,069	6 CATTLE, STOCKERS, FEEDERS	1,820	6 CATTLE & CALVES, UNSPECIFIED	265,349
7 BROCCOLI, FRESH MARKET	75,298	7 NURSERY, TURF	1,614	7 ORANGES, NAVEL	236,228
8 SUGAR BEETS	70,099	8 PASTURE, RANGE	1,040	8 FRUITS & NUTS, UNSPECIFIED	190,340
9 MELONS, CANTALOUPE	53,645	9 HAY, OTHER, UNSPECIFIED	884	9 TANGERINES & MANDARINS	156,413
10 HAY, OTHER, UNSPECIFIED	52,946	10 SHEEP & LAMBS, UNSPECIFIED	700	10 POTATOES, ALL	130,956

Leading Commodities for Gross Value of Agricultural Production by County, 2010 1/

\$1,000

Kings		Lake		Lassen	
1 MILK, MARKET, FLUID	548,956	1 GRAPES, WINE	35,620	1 HAY, OTHER, UNSPECIFIED	13,572
2 COTTON LINT, PIMA	185,566	2 PEARS, BARTLETT	17,732	2 HAY, ALFALFA	12,880
3 TOMATOES, PROCESSING	134,872	3 NURSERY PRODUCTS, MISC.	2,961	3 NURSERY PLANTS, STRAWBERRY	10,538
4 CATTLE & CALVES, UNSPECIFIED	129,451	4 WALNUTS, ENGLISH	2,858	4 CATTLE, STEERS	6,181
5 PISTACHIOS	73,644	5 CATTLE & CALVES, UNSPECIFIED	1,703	5 CATTLE, HEIFERS	4,363
6 VEGETABLES, UNSPECIFIED	65,618	6 PEARS, UNSPECIFIED	1,354	6 CATTLE, MILK COWS	3,461
7 HAY, ALFALFA	64,305	7 FIELD CROPS, UNSPECIFIED	873	7 PASTURE, IRRIGATED	3,036
8 WALNUTS, ENGLISH	52,160	8 PASTURE, RANGE	405	8 HAY, GRAIN	2,799
9 ALMONDS, ALL	51,466	9 VEGETABLES, UNSPECIFIED	195	9 CATTLE, CALVES ONLY	2,749
10 CORN, SILAGE	51,166	10 LIVESTOCK PRODUCTS, MISC.	182	10 PASTURE, RANGE	1,837
Los Angeles		Madera		Marin	
1 NURSERY, WOODY ORNAMNTALS	51,282	1 ALMONDS, ALL	254,873	1 MILK, MARKET, FLUID	26,492
2 NURSERY PLANTS, BEDDING	37,813	2 PISTACHIOS	239,702	2 CATTLE & CALVES, UNSPECIFIED	7,510
3 VEGETABLES, UNSPECIFIED	31,521	3 MILK, MARKET, FLUID	227,556	3 POULTRY, UNSPECIFIED	6,254
4 FRUITS & NUTS, UNSPECIFIED	13,846	4 GRAPES, WINE	120,514	4 FISH, SHELL	4,260
5 FIELD CROPS, UNSPECIFIED	11,524	5 GRAPES, RAISIN	72,127	5 PASTURE, RANGE	3,608
6 NURSERY PRODUCTS, MISC.	11,382	6 CATTLE & CALVES, UNSPECIFIED	43,586	6 VEGETABLES, UNSPECIFIED	2,488
7 LIVESTOCK, UNSPECIFIED	6,924	7 GRAPES, TABLE	40,099	7 SHEEP & LAMBS, UNSPECIFIED	1,523
8 GRAPES, UNSPECIFIED	3,520	8 CATTLE, DAIRY HEIFERS, REPLACEN	38,252	8 SILAGE	1,347
9 FLOWERS, FOLIAGE PLANTS	3,418	9 FRUITS & NUTS, UNSPECIFIED	33,834	9 GRAPES, WINE	1,061
10 NURSERY PLANTS, POTTED, UNSPE	1,622	10 APIARY PRODUCTS, POLLINATION I	26,410	10 NURSERY PRODUCTS, MISC.	992
Mariposa		Mendocino		Merced	
1 CATTLE & CALVES, UNSPECIFIED	15,086	1 GRAPES, WINE	73,904	1 MILK, MARKET, FLUID	736,192
2 PASTURE, RANGE	5,600	2 PEARS, BARTLETT	7,612	2 ALMONDS, ALL	286,600
3 LIVESTOCK PRODUCTS, MISC.	2,693	3 CATTLE & CALVES, UNSPECIFIED	6,485	3 CHICKENS, BROILERS	275,536
4 POULTRY, UNSPECIFIED	1,702	4 FIELD CROPS, UNSPECIFIED	4,200	4 CATTLE & CALVES, UNSPECIFIED	225,408
5 FRUITS & NUTS, UNSPECIFIED	579	5 PASTURE, FORAGE, MISC.	3,971	5 POTATOES, SWEET	152,863
6 LIVESTOCK, UNSPECIFIED	432	6 MILK, MARKET, FLUID	3,882	6 MILK, MANUFACTURING	126,627
7 SHEEP & LAMBS, UNSPECIFIED	216	7 NURSERY PRODUCTS, MISC.	3,167	7 EGGS, CHICKEN, MARKET	93,251
8 FIELD CROPS, UNSPECIFIED	128	8 PEARS, UNSPECIFIED	2,714	8 CORN, SILAGE	79,164
9 APIARY PRODUCTS, HONEY	102	9 LIVESTOCK PRODUCTS, MISC.	2,100	9 HAY, ALFALFA	77,922
10 GRAPES, WINE	80	10 PASTURE, RANGE	1,911	10 COTTON LINT, UNSPECIFIED	69,804
Modoc		Mono		Monterey	
1 HAY, ALFALFA	36,464	1 HAY, ALFALFA	9,653	1 BERRIES, STRAWBERRIES, FRESH IV	739,845
2 CATTLE & CALVES, UNSPECIFIED	18,894	2 CATTLE, STOCKERS, FEEDERS	7,498	2 LETTUCE, HEAD	511,904
3 POTATOES, ALL	14,743	3 CATTLE, STEERS	5,234	3 LETTUCE, ROMAINE	456,932
4 WHEAT, ALL	6,091	4 CATTLE, HEIFERS	3,846	4 LETTUCE, LEAF	260,742
5 VEGETABLES, UNSPECIFIED	5,836	5 SHEEP & LAMBS, UNSPECIFIED	3,080	5 BROCCOLI, FRESH MARKET	230,137
6 PASTURE, IRRIGATED	5,500	6 HAY, OTHER, UNSPECIFIED	2,600	6 GRAPES, WINE	172,916
7 HAY, GRAIN	4,523	7 CATTLE, COWS	2,566	7 CELERY, FRESH MARKET	165,555
8 PASTURE, RANGE	4,032	8 PASTURE, IRRIGATED	1,595	8 SALAD GREENS MISC.	143,975
9 HAY, WILD	3,850	9 PASTURE, RANGE	540	9 VEGETABLES, UNSPECIFIED	127,568
10 ONIONS	3,077	10 POTATOES, ALL	342	10 CAULIFLOWER, FRESH MARKET	97,963
Napa		Nevada		Orange	
1 GRAPES, WINE	453,883	1 CATTLE, HEIFERS & STEERS, FED	3,162	1 NURSERY, WOODY ORNAMNTALS	73,747
2 CATTLE & CALVES, UNSPECIFIED	2,972	2 PASTURE, IRRIGATED	1,500	2 BERRIES, STRAWBERRIES, UNSPEC	29,557
3 NURSERY PRODUCTS, MISC.	2,467	3 PASTURE, RANGE	1,425	3 VEGETABLES, UNSPECIFIED	15,283
4 LIVESTOCK PRODUCTS, MISC.	743	4 GRAPES, WINE	1,032	4 FRUITS & NUTS, UNSPECIFIED	13,137
5 OLIVES	666	5 FRUITS & NUTS, UNSPECIFIED	743	5 NURSERY, FLOWER PROPAGATIVE	10,866
6 VEGETABLES, UNSPECIFIED	323	6 CATTLE, MILK COWS, CULL	658	6 NURSERY PLANTS, POTTED, UNSPE	4,416
7 FRUITS & NUTS, UNSPECIFIED	163	7 NURSERY PRODUCTS, MISC.	452	7 FLOWERS, CUT, UNSPECIFIED	1,014
8 HAY, GRAIN	77	8 SHEEP & LAMBS, UNSPECIFIED	252	8 FIELD CROPS, UNSPECIFIED	936
9 PASTURE, RANGE	69	9 LIVESTOCK, UNSPECIFIED	101	9 CUCUMBERS	664
10 SHEEP & LAMBS, UNSPECIFIED	69	10 LIVESTOCK PRODUCTS, MISC.	80	10 LIVESTOCK, UNSPECIFIED	192

Leading Commodities for Gross Value of Agricultural Production by County, 2010 1/

\$1,000

Placer		Plumas		Riverside	
1 RICE, MILLING	27,354	1 CATTLE, STOCKERS, FEEDERS	11,975	1 MILK, MARKET, FLUID	145,618
2 CATTLE & CALVES, UNSPECIFIED	8,015	2 PASTURE, IRRIGATED	2,310	2 NURSERY, WOODY ORNAMNTALS	131,471
3 NURSERY PRODUCTS, MISC.	5,049	3 HAY, ALFALFA	2,160	3 GRAPES, TABLE	92,187
4 LIVESTOCK, UNSPECIFIED	4,341	4 HAY, WILD	1,170	4 PEPPERS, BELL	89,904
5 WALNUTS, ENGLISH	2,675	5 PASTURE, FORAGE, MISC.	1,040	5 EGGS, CHICKEN, MARKET	71,323
6 PASTURE, IRRIGATED	2,520	6 CATTLE, BEEF COWS, CULL	542	6 LEMONS, ALL	68,959
7 PASTURE, RANGE	2,210	7 HAY, GRAIN	252	7 HAY, ALFALFA	47,304
8 LIVESTOCK PRODUCTS, MISC.	1,600	8 FRUITS & NUTS, UNSPECIFIED	250	8 DATES	36,537
9 WHEAT, ALL	1,131	9 PASTURE, RANGE	195	9 GRAPEFRUIT, ALL	35,446
10 TANGERINES & MANDARINS	994	10 LIVESTOCK, UNSPECIFIED	125	10 NURSERY, TURF	29,392
Sacramento		San Benito		San Bernardino	
1 GRAPES, WINE	92,556	1 VEGETABLES, UNSPECIFIED	40,989	1 MILK, MARKET, FLUID	235,808
2 MILK, MARKET, FLUID	48,631	2 LETTUCE, BULK SALAD PRODUCTS	23,594	2 EGGS, CHICKEN, UNSPECIFIED	45,668
3 PEARS, BARTLETT	39,159	3 PEPPERS, BELL	21,563	3 CATTLE, MILK COWS, CULL	18,346
4 NURSERY PRODUCTS, MISC.	28,925	4 FRUITS & NUTS, UNSPECIFIED	19,916	4 CATTLE & CALVES, UNSPECIFIED	11,594
5 POULTRY, UNSPECIFIED	26,648	5 NURSERY PRODUCTS, MISC.	18,392	5 NURSERY, WOODY ORNAMNTALS	11,496
6 VEGETABLES, UNSPECIFIED	20,832	6 GRAPES, WINE	16,909	6 CABBAGE, CHINESE & SPECIALTY	10,888
7 CORN, GRAIN	19,369	7 SPINACH, UNSPECIFIED	13,264	7 CATTLE, DAIRY HEIFERS, REPLACEN	10,616
8 CATTLE & CALVES, UNSPECIFIED	16,539	8 LETTUCE, ROMAINE	11,577	8 ORANGES, NAVEL	7,858
9 FISH	16,343	9 LIVESTOCK PRODUCTS, MISC.	9,974	9 HAY, ALFALFA	7,772
10 HAY, ALFALFA	11,549	10 CELERY, UNSPECIFIED	9,270	10 VEGETABLES, UNSPECIFIED	7,321
San Diego		San Francisco		San Joaquin	
1 NURSERY, WOODY ORNAMNTALS	418,842	1 FLOWERS, CUT, UNSPECIFIED	444	1 MILK, MARKET, FLUID	308,389
2 FLOWERS, FOLIAGE PLANTS	292,500	2 SPROUTS, ALFALFA & BEAN	288	2 GRAPES, WINE	247,641
3 NURSERY PLANTS, BEDDING	214,941	3	0	3 WALNUTS, ENGLISH	207,230
4 AVOCADOS, ALL	147,052	4	0	4 CHERRIES, SWEET	184,544
5 TOMATOES, FRESH MARKET	86,775	5	0	5 ALMONDS, ALL	156,822
6 EGGS, CHICKEN, MARKET	75,905	6	0	6 TOMATOES, PROCESSING	75,636
7 FLOWERS, CUT, UNSPECIFIED	57,331	7	0	7 CATTLE & CALVES, UNSPECIFIED	60,165
8 LEMONS, ALL	38,986	8	0	8 APPLES, ALL	52,111
9 VEGETABLES, UNSPECIFIED	38,448	9	0	9 HAY, ALFALFA	51,737
10 NURSERY, HERBACIOUS PERERNNI	26,235	10	0	10 CORN, SILAGE	48,430
San Luis Obispo		San Mateo		Santa Barbara	
1 GRAPES, WINE	173,558	1 NURSERY PLANTS, POTTED, UNSPE	88,797	1 BERRIES, STRAWBERRIES, FRESH M	351,038
2 BERRIES, STRAWBERRIES, FRESH M	110,543	2 NURSERY PRODUCTS, MISC.	14,950	2 BROCCOLI, UNSPECIFIED	122,536
3 BROCCOLI, UNSPECIFIED	55,830	3 BRUSSELS SPROUTS	7,890	3 VEGETABLES, UNSPECIFIED	101,462
4 CATTLE & CALVES, UNSPECIFIED	53,374	4 FLOWERS, CUT, UNSPECIFIED	5,415	4 GRAPES, WINE	97,375
5 VEGETABLES, UNSPECIFIED	46,797	5 FLOWERS, FOLIAGE, CUT, ALL	4,619	5 FLOWERS, CUT, UNSPECIFIED	95,612
6 AVOCADOS, ALL	35,862	6 FLOWERS, FOLIAGE PLANTS	4,443	6 LETTUCE, HEAD	76,495
7 NURSERY PLANTS, VEGETABLE BEC	33,460	7 VEGETABLES, UNSPECIFIED	3,726	7 AVOCADOS, ALL	52,063
8 FLOWERS, CUT, UNSPECIFIED	23,313	8 CATTLE & CALVES, UNSPECIFIED	1,780	8 CAULIFLOWER, UNSPECIFIED	47,699
9 FLOWERS, FOLIAGE PLANTS	23,289	9 FRUITS & NUTS, UNSPECIFIED	1,670	9 BERRIES, STRAWBERRIES, PROCESS	41,265
10 FRUITS & NUTS, UNSPECIFIED	20,716	10 LEEKS	1,353	10 CELERY, UNSPECIFIED	40,795
Santa Clara		Santa Cruz		Shasta	
1 MUSHROOMS	60,772	1 BERRIES, STRAWBERRIES, UNSPECI	197,228	1 FOREST PRODUCTS, UNSPECIFIED	22,922
2 NURSERY PLANTS, BEDDING	36,331	2 BERRIES, RASPBERRIES	91,684	2 HAY, OTHER, UNSPECIFIED	14,499
3 NURSERY PRODUCTS, MISC.	30,946	3 FLOWERS, CUT, UNSPECIFIED	72,321	3 CATTLE, STOCKERS, FEEDERS	12,557
4 NURSERY, WOODY ORNAMNTALS	22,825	4 VEGETABLES, UNSPECIFIED	38,424	4 NURSERY PRODUCTS, MISC.	9,081
5 PEPPERS, BELL	13,373	5 BERRIES, BLACKBERRIES	34,249	5 PASTURE, RANGE	3,475
6 PEPPERS, CHILI, HOT	12,101	6 NURSERY, WOODY ORNAMNTALS	25,906	6 PASTURE, IRRIGATED	3,300
7 LETTUCE, UNSPECIFIED	10,948	7 NURSERY PRODUCTS, MISC.	17,113	7 CATTLE, BEEF COW, BREEDING	3,183
8 TOMATOES, FRESH MARKET	8,198	8 APPLES, ALL	13,334	8 RICE, WILD	2,786
9 GRAPES, WINE	7,059	9 LETTUCE, LEAF	8,876	9 WALNUTS, ENGLISH	2,715
10 CHERRIES, SWEET	5,123	10 BRUSSELS SPROUTS	7,525	10 LIVESTOCK, UNSPECIFIED	2,387

Leading Commodities for Gross Value of Agricultural Production by County, 2010 1/

\$1,000

Sierra		Siskiyou		Solano	
1 CATTLE, STOCKERS, FEEDERS	3,590	1 NURSERY PLANTS, STRAWBERRY	65,129	1 TOMATOES, PROCESSING	36,901
2 PASTURE, IRRIGATED	756	2 HAY, ALFALFA	32,000	2 WALNUTS, ENGLISH	31,162
3 HAY, ALFALFA	548	3 CATTLE, HEIFERS & STEERS, FED	13,122	3 VEGETABLES, UNSPECIFIED	26,797
4 HAY, WILD	454	4 POTATOES, ALL	12,988	4 NURSERY PRODUCTS, MISC.	23,352
5 PASTURE, FORAGE, MISC.	400	5 FRUITS & NUTS, UNSPECIFIED	11,137	5 CATTLE & CALVES, UNSPECIFIED	22,608
6 HAY, GRAIN	161	6 NURSERY PRODUCTS, MISC.	8,889	6 HAY, ALFALFA	19,743
7 CATTLE, BEEF COWS, CULL	149	7 PASTURE, IRRIGATED	7,284	7 MILK, MARKET, FLUID	13,383
8 PASTURE, RANGE	72	8 FIELD CROPS, UNSPECIFIED	7,234	8 CORN, GRAIN	9,965
9 FRUITS & NUTS, UNSPECIFIED	35	9 WHEAT, ALL	5,961	9 WHEAT, ALL	9,673
10 LIVESTOCK, UNSPECIFIED	35	10 HAY, OTHER, UNSPECIFIED	5,803	10 GRAPES, WINE	9,275
Sonoma		Stanislaus		Sutter	
1 GRAPES, WINE	390,448	1 MILK, MARKET, FLUID	506,056	1 RICE, MILLING	202,946
2 MILK, MARKET, FLUID	77,679	2 ALMONDS, ALL	390,498	2 WALNUTS, ENGLISH	71,761
3 POULTRY, UNSPECIFIED	43,293	3 CHICKENS, UNSPECIFIED	180,852	3 PLUMS, DRIED	48,830
4 LIVESTOCK PRODUCTS, MISC.	20,800	4 CHICKENS, CHICKS	127,189	4 PEACHES, CLINGSTONE	32,284
5 CATTLE & CALVES, UNSPECIFIED	11,649	5 WALNUTS, ENGLISH	116,246	5 TOMATOES, PROCESSING	22,390
6 NURSERY, WOODY ORNAMNTALS	10,853	6 TOMATOES, PROCESSING	98,624	6 ALMONDS, ALL	17,374
7 VEGETABLES, UNSPECIFIED	8,212	7 MILK, MANUFACTURING	91,626	7 BIOMASS, ORCHARD	15,547
8 APPLES, ALL	5,862	8 CORN, SILAGE	82,042	8 RICE, SEED	14,953
9 NURSERY PRODUCTS, MISC.	4,856	9 NURSERY, FRUIT/VINE/NUT, NON-	77,531	9 NURSERY, FRUIT/VINE/NUT, NON-	13,304
10 NURSERY PLANTS, BEDDING	4,184	10 TURKEYS, UNSPECIFIED	64,324	10 SEED, VEGETABLE & VINECROP	9,658
Tehama		Trinity		Tulare	
1 WALNUTS, ENGLISH	80,581	1 FOREST PRODUCTS, FIREWOOD	4,989	1 MILK, MARKET, FLUID	1,597,328
2 ALMONDS, ALL	24,761	2 CATTLE & CALVES, UNSPECIFIED	965	2 ORANGES, NAVEL	518,365
3 OLIVES	24,439	3 FOREST PRODUCTS, UNSPECIFIED	825	3 CATTLE & CALVES, UNSPECIFIED	499,810
4 PLUMS, DRIED	23,672	4 PASTURE, RANGE	751	4 GRAPES, TABLE	401,320
5 MILK, MANUFACTURING	9,150	5 GRAPES, WINE	323	5 CORN, SILAGE	159,565
6 PASTURE, RANGE	7,863	6 PASTURE, IRRIGATED	165	6 PISTACHIOS	141,128
7 CATTLE, STOCKERS, FEEDERS	7,740	7 FRUITS & NUTS, UNSPECIFIED	100	7 TANGERINES & MANDARINS	115,440
8 MILK, MARKET, FLUID	6,108	8 NURSERY PRODUCTS, MISC.	28	8 NECTARINES	109,002
9 FRUITS & NUTS, UNSPECIFIED	3,786	9 HAY, GRAIN	23	9 ALMONDS, ALL	98,264
10 APIARY PRODUCTS, BEES, UNSPEC	3,771	10 HAY, WILD	17	10 ORANGES, VALENCIA	97,859
Tuolumne		Ventura		Yolo	
1 LIVESTOCK, UNSPECIFIED	8,801	1 BERRIES, STRAWBERRIES, FRESH M	494,289	1 TOMATOES, PROCESSING	87,920
2 CATTLE, CALVES ONLY	5,862	2 CELERY, UNSPECIFIED	182,268	2 RICE, MILLING	56,306
3 PASTURE, RANGE	3,270	3 LEMONS, ALL	174,766	3 GRAPES, WINE	45,650
4 FOREST PRODUCTS, FIREWOOD	1,290	4 BERRIES, RASPBERRIES	167,446	4 VEGETABLES, UNSPECIFIED	44,643
5 FRUITS & NUTS, UNSPECIFIED	406	5 AVOCADOS, ALL	148,343	5 HAY, ALFALFA	27,878
6 NURSERY PRODUCTS, MISC.	257	6 TOMATOES, UNSPECIFIED	120,085	6 WALNUTS, ENGLISH	24,365
7 PASTURE, IRRIGATED	185	7 NURSERY, WOODY ORNAMNTALS	84,670	7 SEED, OTHER (NO FLOWERS)	21,430
8 SHEEP & LAMBS, UNSPECIFIED	167	8 VEGETABLES, UNSPECIFIED	55,673	8 ALMONDS, ALL	16,801
9 VEGETABLES, UNSPECIFIED	153	9 BERRIES, STRAWBERRIES, PROCESS	47,838	9 CORN, GRAIN	16,737
10 CATTLE, BEEF COWS, CULL	151	10 PEPPERS, BELL	45,364	10 WHEAT, ALL	15,317
Yuba					
1 RICE, MILLING	70,522				
2 WALNUTS, ENGLISH	35,311				
3 PLUMS, DRIED	27,728				
4 PEACHES, CLINGSTONE	20,100				
5 MILK, MARKET, FLUID	11,323				
6 CATTLE & CALVES, UNSPECIFIED	5,851				
7 FRUITS & NUTS, UNSPECIFIED	5,330				
8 FIELD CROPS, UNSPECIFIED	4,581				
9 KIWIFRUIT	3,607				
10 PASTURE, RANGE	2,835				

1/ The data rankings were extracted from County Agricultural Commissioners' Reports where published. Those not ranked by the counties were ranked by USDA's National Agricultural Statistics Service, California Field Office. Timber was omitted in rankings.

Organic Farming, 2010

County	Number of Farms	Estimated Acres	Total Value (Dollars)
Alameda	9	200	---
Amador	8	---	---
Butte	86	19,300	7,827,000
Calaveras	6	55	---
Contra Costa	13	439	---
Del Norte	6	---	---
El Dorado	22	207	---
Fresno	184	39,800	81,657,000
Glenn	42	10,100	---
Humboldt 1/	134	37,300	---
Imperial	26	6,610	36,161,000
Kern	50	---	---
Kings	19	12,200	---
Lake	113	2,500	4,025,000
Lassen	---	4,950	---
Los Angeles 1/	25	110	---
Madera	50	6,800	20,108,000
Marin	68	19,600	17,789,000
Mariposa	1	---	---
Mendocino	---	7,410	---
Merced	51	45,000	---
Mono / Inyo	3	---	---
Monterey	87	19,500	168,956,000
Napa	132	2,830	23,259,000
Nevada	35	294	---
Placer	17	3,420	---
Riverside	115	---	---
Sacramento	16	---	---
San Benito	34	7,700	---
San Diego	368	5,400	---
San Luis Obispo	85	11,800	---
San Mateo	15	220	---
Santa Barbara	112	---	---
Santa Clara	16	323	---
Santa Cruz	90	1,600	26,100,000
Shasta	25	2,060	---
Siskiyou	---	41,000	21,390,000
Solano	32	1,930	7,768,000
Sonoma	254	16,300	---
Stanislaus	---	3,960	8,000,000
Sutter	33	12,600	---
Tehama	34	12,600	---
Trinity 1/	---	100	---
Tulare	100	4,670	---
Tuolumne	7	175	---
Ventura	79	5,190	---
Yolo	---	6,690	26,243,000
Yuba	22	4,100	---

1/ Carried over from previous year.

California County Agricultural Commissioners

County	Name	Mailing Address and Website	Mailing City-State-Zip	Phone	Fax
Alameda	Dennis Bray	224 W. Winton Avenue, Room 184 www.acgov.org/cda/awm/	Hayward, CA 94544-1215	(510) 670-5232	(510) 783-3928
Alpine	Charlene Carveth (Acting)	311 Fair Lane www.alpinecountyca.gov	Placerville, CA 95667-4101	(530) 621-5522	(530) 626-4756
Amador	Mike Boitano	12200 Airport Road www.co.amador.ca.us/	Jackson, CA 95642-9527	(209) 223-6487	(209) 223-3312
Butte	Richard Price	316 Nelson Avenue www.buttecounty.net/agcommissioner	Oroville, CA 95965-3318	(530) 538-7381	(530) 538-7594
Calaveras	Mary Mutz	891 Mountain Ranch Road www.co.calaveras.ca.us/	San Andreas, CA 95249-9709	(209) 754-6504	(209) 754-9256
Colusa	Joseph Damiano	100 Sunrise Blvd., Suite F www.colusacountyclerk.com/	Colusa, CA 95932-3246	(530) 458-0580	(530) 458-5000
Contra Costa	Vince Guise	2366 'A' Stanwell Circle www.co.contra-costa.ca.us/	Concord, CA 94520-4807	(925) 646-5250	(925) 646-5732
Del Norte	Ken Smith	2650 Washington Blvd. www.dnco.org/	Crescent City, CA 95531-8627	(707) 464-7235	(707) 465-6044
El Dorado	Charlene Carveth (Acting)	311 Fair Lane www.co.el-dorado.ca.us/ag/	Placerville, CA 95667-4195	(530) 621-5522	(530) 626-4756
Fresno	Carol Hafner	1730 S. Maple Avenue www.co.fresno.ca.us/	Fresno, CA 93702-4596	(559) 600-7510	(559) 455-2415
Glenn	Jim Donnelly	P.O. Box 351 www.countyofglenn.net	Willows, CA 95988	(530) 934-6501	(530) 934-6503
Humboldt	Jeff Dolf	5630 S. Broadway http://co.humboldt.ca.us/	Eureka, CA 95503	(707) 445-7223	(707) 445-7220
Imperial	Connie Valenzuela	852 Broadway www.imperialcounty.net/	El Centro, CA 92243-2850	(760) 482-4314	(760) 353-9420
Inyo	George Milovich	207 W. South Street www.inyomonoagriculture.com/	Bishop, CA 93514-3492	(760) 873-7860	(760) 872-1610
Kern	Ruben Arroyo	1001 South Mt. Vernon Avenue www.kernag.com/default.asp	Bakersfield, CA 93307-2857	(661) 868-6300	(661) 868-6301
Kings	Tim Niswander	680 N. Campus Drive, Suite B www.countyofkings.com/	Hanford, CA 93230-5923	(559) 582-3211 Ext. 2830	(559) 582-5251
Lake	Steve Hajk	883 Lakeport Blvd. www.co.lake.ca.us/Home.htm	Lakeport, CA 95453	(707) 263-0217	(707) 263-1052
Lassen	Joe A. Moreo	175 Russell Avenue www.co.lassen.ca.us/	Susanville, CA 96130-4299	(530) 251-8110	(530) 257-6515
Los Angeles	Kurt Floren	12300 Lower Azusa Road acwm.co.la.ca.us/	Arcadia, CA 91006-5872	(626) 575-5471	(626) 350-3243
Madera	Bob Rolan	332 Madera Avenue www.madera-county.com/agcommissioner/	Madera, CA 93637-5499	(559) 675-7876	(559) 674-4071
Marin	Stacy Carlsen	1682 Novato Blvd., Suite 150-A www.co.marin.ca.us/depts/AG/main/	Novato, CA 94947-7021	(415) 499-6700	(415) 499-7543
Mariposa	Cathi Boze	P.O. Box 905 www.mariposacounty.org	Mariposa, CA 95338-0905	(209) 966-2075	(209) 966-2056
Mendocino	Tony Linegar	890 North Bush Street www.co.mendocino.ca.us/	Ukiah, CA 95482-3745	(707) 463-4208	(707) 463-0240
Merced	David A. Robinson	2139 Wardrobe Avenue www.co.merced.ca.us/index.aspx	Merced, CA 95340-6495	(209) 385-7431	(209) 725-3536
Modoc	Joe A. Moreo	202 West 4th Street www.modocounty.us/	Alturas, CA 96101-3915	(530) 233-6401	(530) 233-5542
Mono	George Milovich	207 W. South Street www.inyomonoagriculture.com/index.html	Bishop, CA 93514-3492	(760) 873-7860	(760) 872-1610
Monterey	Eric Lauritzen	1428 Abbott Street www.co.monterey.ca.us/ag/	Salinas, CA 93901	(831) 759-7325	(831) 759-2268
Napa	Dave Whitmer	1710 Soscol Avenue, Suite 3 www.countyofnapa.org/AgCom/	Napa, CA 94559-1315	(707) 253-4357	(707) 253-4881
Nevada	Jeffrey Pylman	255 S. Auburn Street www.co.nevada.ca.us	Grass Valley, CA 95945-7289	(530) 273-2648	(530) 273-1713

California County Agricultural Commissioners

County	Name	Mailing Address and Website	Mailing City, State and Zip	Phone	Fax
Orange	Rick Le Feuvre	222 E. Bristol Lane www.ocagcomm.com	Orange, CA 92865-2714	(714) 955-0100	(714) 921-2713
Placer	Josh Huntsinger	11477 'E' Avenue www.placer.ca.gov/	Auburn, CA 95603-2799	(530) 889-7372	(530) 823-1698
Plumas	Keith Mahan	208 Fairground Road www.countyofplumas.com/index.aspx	Quincy, CA 95971-9462	(530) 283-6365	(530) 283-4210
Riverside	John Snyder	P.O. Box 1480 www.rivcoag.org/opencms/index.html	Riverside, CA 92502-1089	(951) 955-3011	(951) 955-3012
Sacramento	Juli D. Jensen	4137 Branch Center Road www.agcomm.saccounty.net/default.htm	Sacramento, CA 95827-3897	(916) 875-6603	(916) 875-6150
San Benito	Ron Ross	P.O. Box 699 www.san-benito.ca.us/departments/ag/	Hollister, CA 95024-0699	(831) 637-5344	(831) 637-9015
San Bernardino	John Gardner	777 E. Rialto Avenue www.sbcounty.gov/awm/	San Bernardino, CA 92415-0720	(909) 387-2115	(909) 387-2449
San Diego	Lisa Leondis	9325 Hazard Way, Suite 100 www.sdcountry.ca.gov/awm/	San Diego, CA 92123-1256	(858) 694-2741	(858) 565-7046
San Francisco	Miguel Monroy	1390 Market Street, Suite 822 www.sfgov.org/	San Francisco, CA 94102	(415) 252-3830	(415) 252-3869
San Joaquin	Scott Hudson	2101 East Earhart Avenue, Suite 100 www.sjgov.org/agcomm/	Stockton, CA 95206-1809	(209) 953-6000	(209) 953-6022
San Luis Obispo	Martin Settevendemie	2156 Sierra Way, Suite A www.slocounty.ca.gov/agcomm	San Luis Obispo, CA 93401-4556	(805) 781-5910	(805) 781-1035
San Mateo	Fred Crowder	P.O. Box 999 www.co.sanmateo.ca.us/portal/site/SMC	Redwood City, CA 94064-0999	(650) 363-4700	(650) 367-0130
Santa Barbara	Cathleen Fisher	263 Camino Del Remedio www.countyofsb.org/agcomm/	Santa Barbara, CA 93110-1335	(805) 681-5600	(805) 681-5603
Santa Clara	Kevin O'Day	1553 Berger Drive, Bldg. 1 www.sccagriculture.org/portal/site/ag/	San Jose, CA 95112-2795	(408) 918-4600	(408) 286-2460
Santa Cruz	Mary Lou Nicoletti (Acting)	175 Westridge Drive www.agdept.com/	Watsonville, CA 95076-2797	(831) 763-8080	(831) 763-8255
Shasta	Mary Pfeiffer	3179 Bechelli Lane, Suite 210 www.co.shasta.ca.us/index.aspx	Redding, CA 96002-2041	(530) 224-4949	(530) 224-4951
Sierra	Keith Mahan	208 Fairground Road www.sierracounty.ws/	Quincy, CA 95971-9462	(530) 283-6365	(530) 283-4210
Siskiyou	Pat Griffin	525 S. Foothill Drive www.co.siskiyou.ca.us/AG/ag.aspx	Yreka, CA 96097-3090	(530) 841-4033	(530) 842-6690
Solano	Jim Allan	501 Texas Street www.solanocounty.com/depts/agriculture/	Fairfield, CA 94533	(707) 784-1310	(707) 784-1330
Sonoma	Lisa Correia (Acting CAC)	133 Aviation Blvd., Suite 110 www.sonoma-county.org/agcomm/index.htm	Santa Rosa, CA 95403-2893	(707) 565-2371	(707) 565-3850
Stanislaus	Gary Caseri	3800 Cornucopia Way, Suite B www.stanag.org/	Modesto, CA 95358	(209) 525-4730	(209) 525-4790
Sutter	Mark Quisenberry	142 Garden Highway www.co.sutter.ca.us	Yuba City, CA 95991-5512	(530) 822-7500	(530) 822-7510
Tehama	Rick Gurrola	P.O. Box 38 www.co.tehama.ca.us/	Red Bluff, CA 96080	(530) 527-4504	(530) 529-1049
Trinity	Mark Lockhart	P.O. Box 1466 www.trinitycounty.org/	Weaverville, CA 96093-1466	(530) 623-1356	(530) 623-1391
Tulare	Marilyn Kinoshita	4437 South Laspina Street www.co.tulare.ca.us/	Tulare, CA 93274	(559) 685-3350	(559) 685-3335
Tuolumne	Vicki Helmar	2 South Green Street www.tuolumnecounty.ca.gov	Sonora, CA 95370-4617	(209) 533-5691	(209) 533-5520
Ventura	Henry Gonzales	P.O. Box 3937 www.ventura.org	Ventura, CA 93003	(805) 477-1620	
Yolo	John Young	70 Cottonwood Street http://www.yolocounty.org	Woodland, CA 95695-2593	(530) 666-8140	(530) 662-6094
Yuba	Louie B. Mendoza, Jr.	915 - 8th Street, Suite 127 www.co.yuba.ca.us/Departments/Ag/	Marysville, CA 95901-5273	(530) 749-5400	(530) 749-5404

USDA NATIONAL AGRICULTURAL STATISTICS SERVICE



California Field Office

P.O. Box 1258
Sacramento, CA 95812-1258
Phone: (916) 498-5161 Fax: (916) 498-5186

www.nass.usda.gov/ca



Non-Discrimination Statement

The U.S. Department of Agriculture (USDA) prohibits discrimination in all of its programs and activities on the basis of race, color, national origin, age, disability, and where applicable, sex (including gender identity and expression), marital status, familial status, parental status, religion, sexual orientation, political beliefs, genetic information, reprisal, or because all or part of an individual's income is derived from any public assistance program. (Not all prohibited bases apply to all programs.) Persons with disabilities who require alternative means for communication of program information (Braille, large print, audiotape, etc.) should contact USDA's TARGET Center at (202) 720-2600 (voice and TDD).

To file a complaint of discrimination, write to USDA, Assistant Secretary for Civil Rights, Office of the Assistant Secretary for Civil Rights, 1400 Independence Avenue, S.W., Stop 9410, Washington, DC 20250-9410, or call toll-free at (866) 632-9992 (English) or (800) 877-8339 (TDD) or (866) 377-8642 (English Federal-relay) or (800) 845-6136 (Spanish Federal-relay). USDA is an equal opportunity provider and employer.