

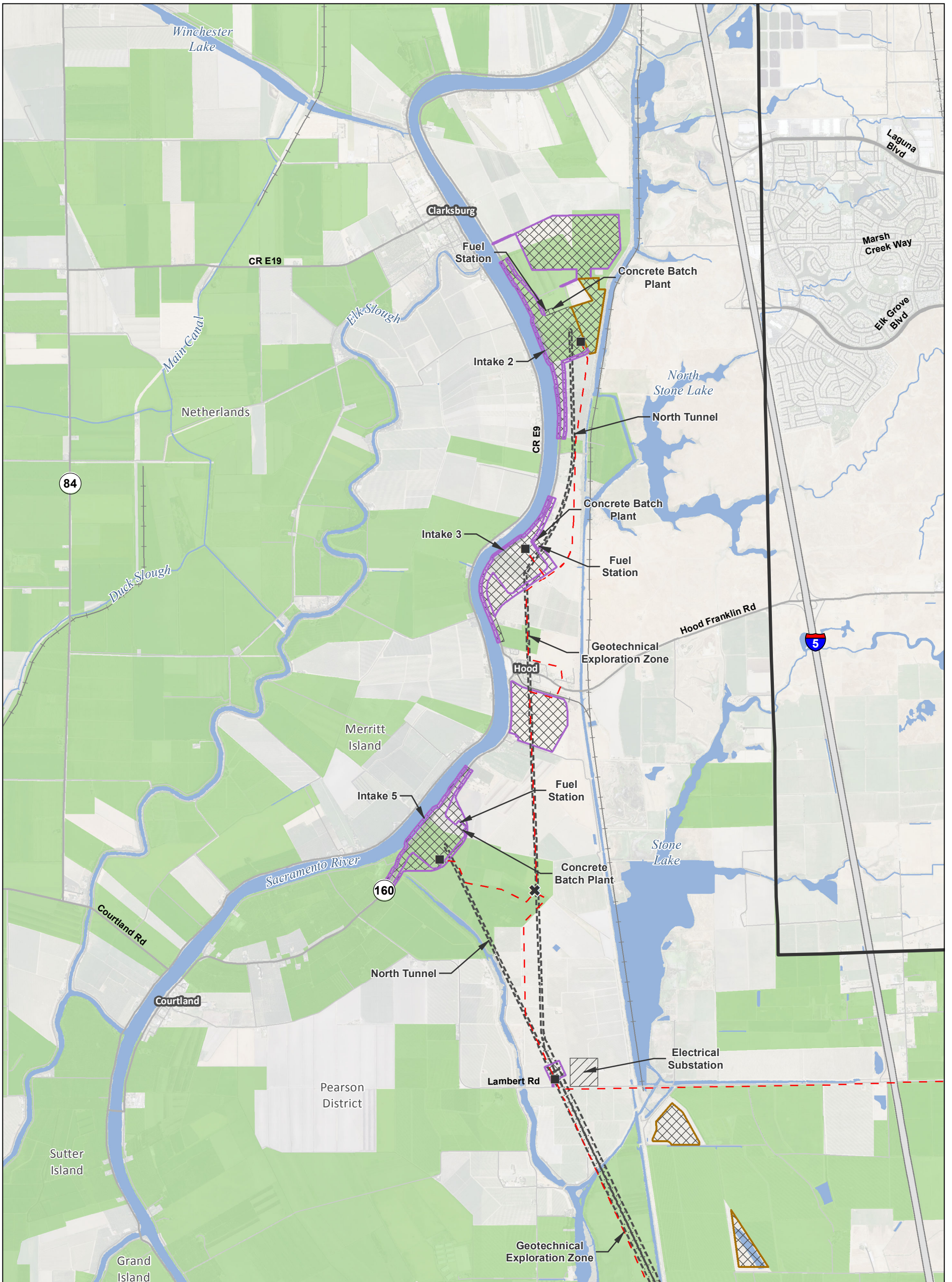
T:\WGI\38\GIS_33_00\GISRequest_11\FIC\FIC098_14\IEREIS_Mapbook_Index48K.mxd 2015330

<p>Legend</p> <ul style="list-style-type: none"> Interstate State Highway/Route Railroad Plan Area Areas of Additional Analysis (Outside of Legal Delta; for Power Only) Water 	<p>Conveyance Construction Footprint</p> <ul style="list-style-type: none"> Permanent Subsurface Impact <p>Temporary Surface Impact</p> <ul style="list-style-type: none"> Geotechnical Exploration Zone Work Area Other <p>Permanent Surface Impact</p> <ul style="list-style-type: none"> Canal Reusable Tunnel Material Area Other <p><small>*Surface impacts are not expected to result from subsurface features.</small></p>	<p>Proposed Power</p> <ul style="list-style-type: none"> Substation Proposed Tower Relocation Interconnection Point <p>Existing Power</p> <ul style="list-style-type: none"> Existing Tower <p><small>**In-river features are not a permanent impact to navigation.</small></p>	<p>Proposed Power</p> <ul style="list-style-type: none"> Permanent OH Transmission Line Temporary OH Transmission Line <p>Existing Power</p> <ul style="list-style-type: none"> Existing Permanent OH Transmission Line 	<p style="text-align: center;">***Surface impacts will only occur at sites selected for geotechnical explorations. See Ch. 3, Section 3.6.1.10 for more information</p>
---	--	---	---	---

Sources: DWR DHCCP MPTO Construction Footprint (rev 5a), ICF 2012; NAIP 2012

Figure M14-8: Index Lands under Williamson Act Contracts — Modified Pipeline/Tunnel Alignment (Alternative 4)

Version Date: 30 Mar 2015

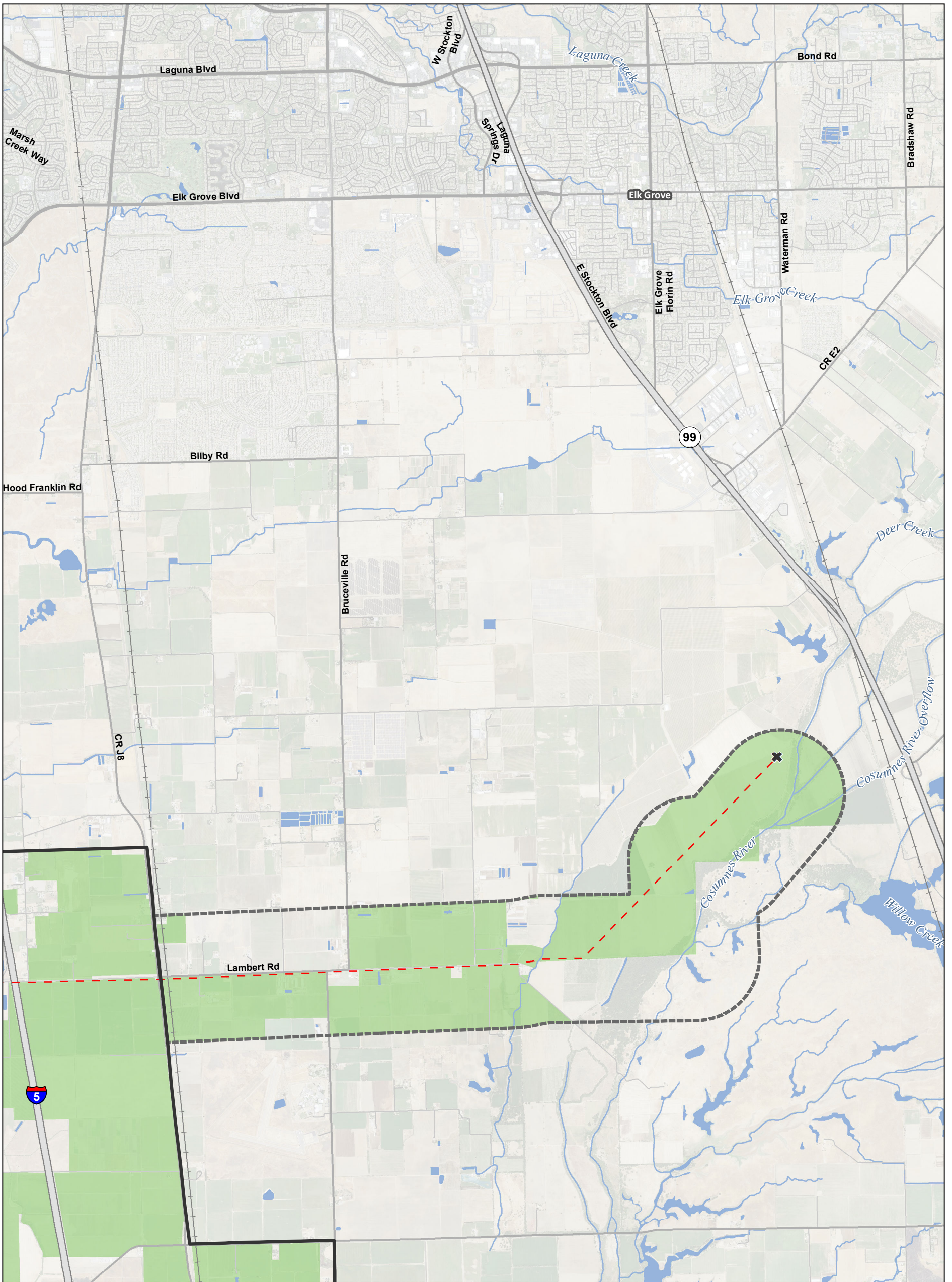


Legend 		Proposed Power 		 <p>*Surface impacts are not expected to result from subsurface features. **In-river features are not a permanent impact to navigation. ***Surface impacts will only occur at sites selected for geotechnical explorations. See Ch. 3, Section 3.6.1.10 for more information</p>
<p>0 3,000 6,000 Feet 1:48,000</p>				

Sources: Plan Area, ICF 2012; DWR DCE MPTO Construction Footprint (rev 5a); Williamson Act 2009

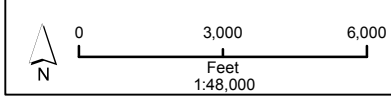
DRAFT: 28 Mar 2015

**Figure M14-8: Sheet 1 of 8
 Lands under Williamson Act Contracts — Modified Pipeline/Tunnel Alignment (Alternative 4)**



T:\WG\38\GIS_33_00\GISRequest_11\FIC\FIC098_14\IEIREIS_CCO_48K_Mapbook.mxd 2015328

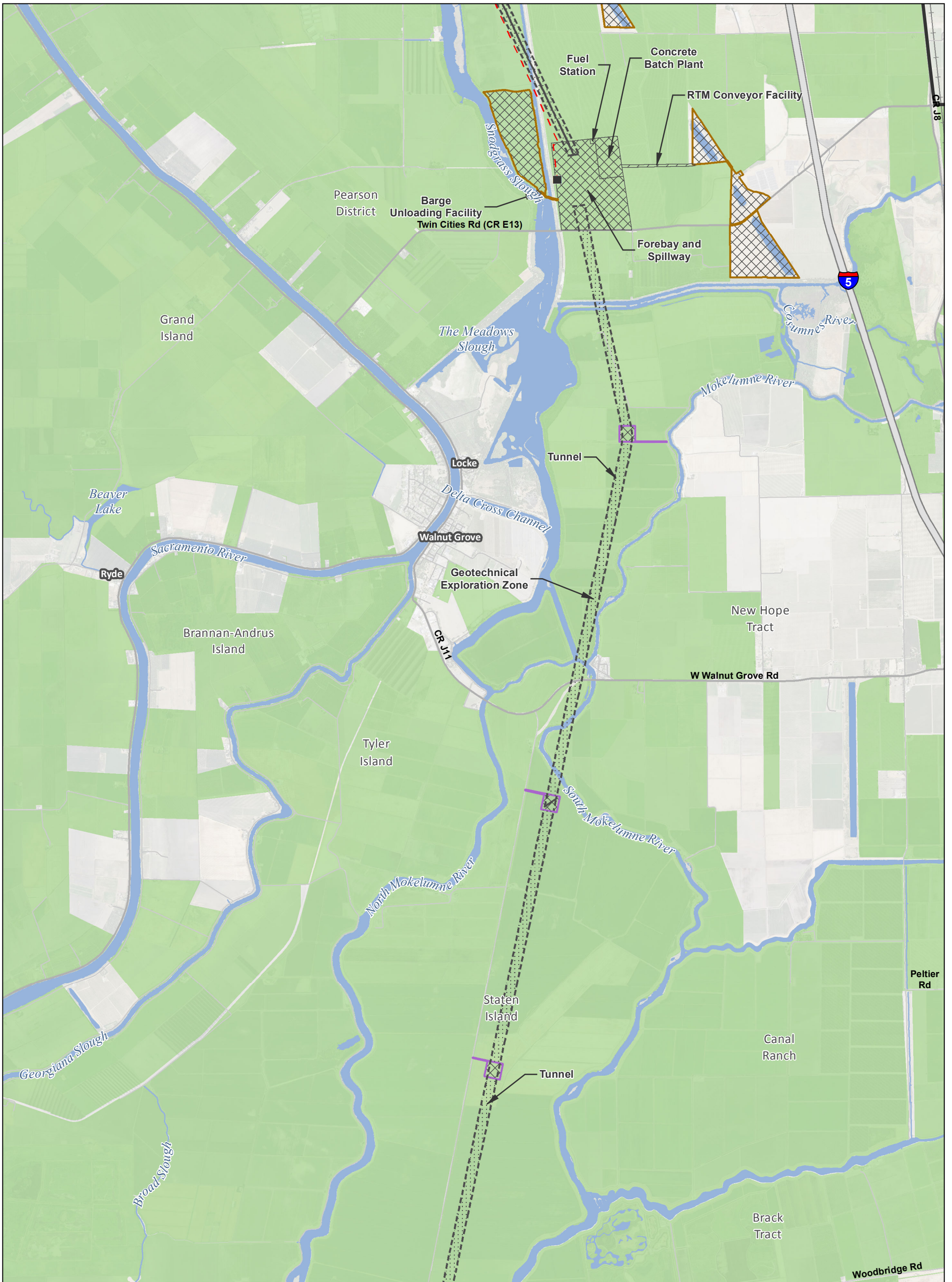
Legend Plan Area Areas of Additional Analysis (Outside of Legal Delta; for Power Only)		Conveyance Construction Footprint Permanent Subsurface Impact Temporary Surface Impact Geotechnical Planning Area Work Area Other Permanent Surface Impact Canal Reusable Tunnel Material Area Other		Proposed Power Substation Proposed Tower Relocation Interconnection Point Existing Tower Permanent OH Transmission Line Temporary OH Transmission Line Existing Permanent OH Transmission Line		Williamson Act Lands <p>*Surface impacts are not expected to result from subsurface features. **In-river features are not a permanent impact to navigation. ***Surface impacts will only occur at sites selected for geotechnical explorations. See Ch. 3, Section 3.6.1.10 for more information</p>	
---	--	--	--	--	--	--	--



Sources: Plan Area, ICF 2012; DWR DCE MPTO Construction Footprint (rev 5a); Williamson Act 2009

Figure M14-8: Sheet 2 of 8
Lands under Williamson Act Contracts — Modified Pipeline/Tunnel Alignment (Alternative 4)

DRAFT: 28 Mar 2015



Legend

<ul style="list-style-type: none"> Plan Area Areas of Additional Analysis (Outside of Legal Delta; for Power Only) 	<ul style="list-style-type: none"> Permanent Subsurface Impact Temporary Surface Impact <ul style="list-style-type: none"> Geotechnical Planning Area Work Area Other Permanent Surface Impact <ul style="list-style-type: none"> Canal Reusable Tunnel Material Area Other 	<ul style="list-style-type: none"> Proposed Power <ul style="list-style-type: none"> Substation Proposed Tower Relocation Interconnection Point Existing Tower Permanent OH Transmission Line Temporary OH Transmission Line Existing Permanent OH Transmission Line 	<ul style="list-style-type: none"> Williamson Act Lands
--	---	---	---

*Surface impacts are not expected to result from subsurface features.
 **In-river features are not a permanent impact to navigation.
 ***Surface impacts will only occur at sites selected for geotechnical explorations.
 See Ch. 3, Section 3.6.1.10 for more information

T:\WG\38\GIS_33_00\GISRequest_11\FIC\FIC098_14\IREIS_CCO_48K_Mapbook.mxd 2015328

Sources: Plan Area, ICF 2012; DWR DCE MPTO Construction Footprint (rev 5a); Williamson Act 2009

DRAFT: 28 Mar 2015

Figure M14-8: Sheet 3 of 8
Lands under Williamson Act Contracts — Modified Pipeline/Tunnel Alignment (Alternative 4)



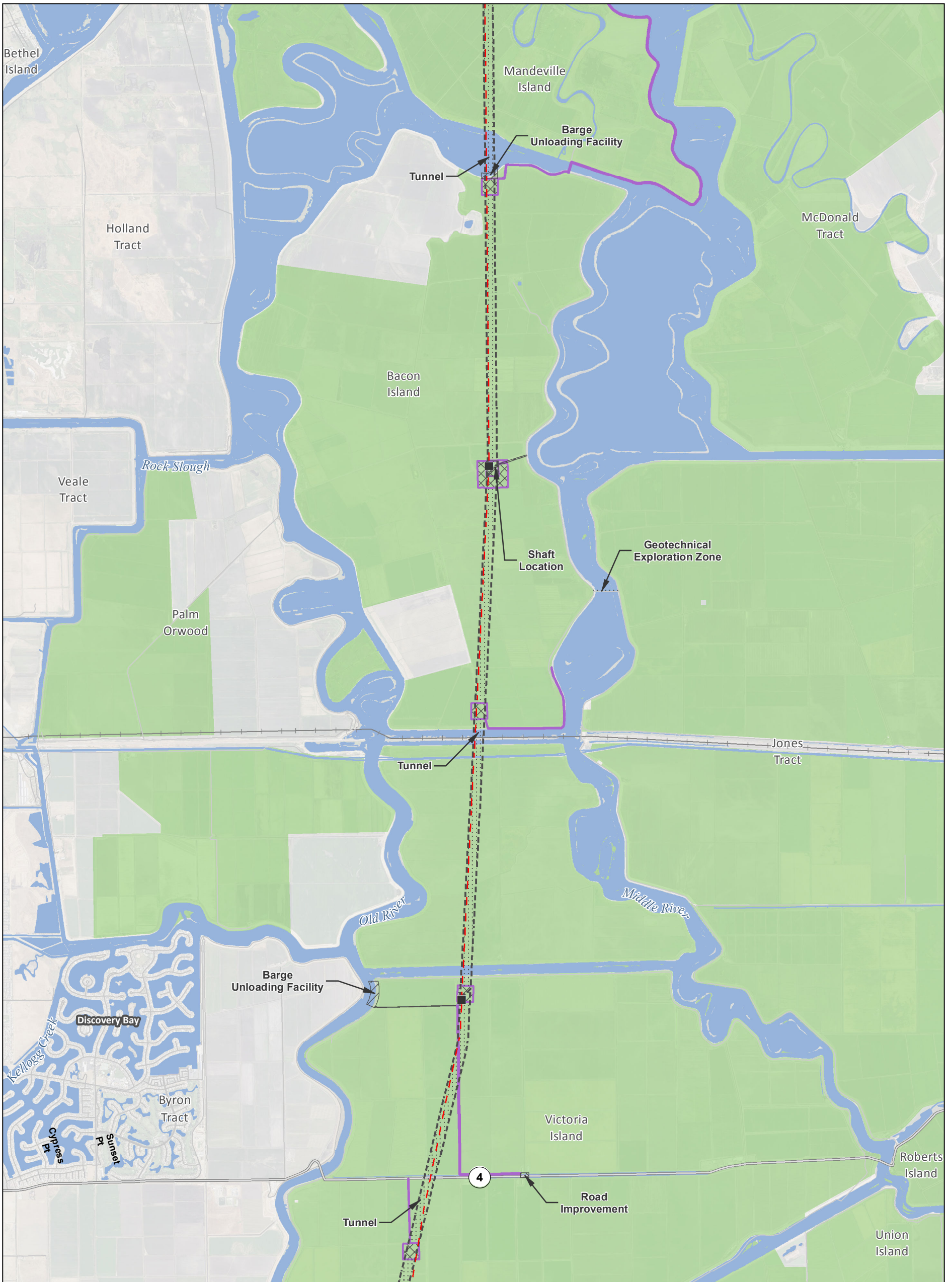
Legend Plan Area Areas of Additional Analysis (Outside of Legal Delta; for Power Only)		Conveyance Construction Footprint Permanent Subsurface Impact Temporary Surface Impact Geotechnical Planning Area Work Area Other Permanent Surface Impact Canal Reusable Tunnel Material Area Other		Proposed Power Substation Proposed Tower Relocation Interconnection Point Existing Tower Permanent OH Transmission Line Temporary OH Transmission Line Existing Permanent OH Transmission Line		Williamson Act Lands <p>*Surface impacts are not expected to result from subsurface features. **In-river features are not a permanent impact to navigation. ***Surface impacts will only occur at sites selected for geotechnical explorations. See Ch. 3, Section 3.6.1.10 for more information</p>	
---	--	--	--	--	--	--	--

T:\WG\GIS\GIS_33_00\GISRequest_11\FIC\FIC098_14\IEREIS_CCO_48K_Mapbook.mxd 2015328

Sources: Plan Area, ICF 2012; DWR DCE MPTO Construction Footprint (rev 5a); Williamson Act 2009

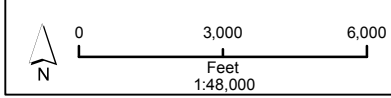
Figure M14-8: Sheet 4 of 8
Lands under Williamson Act Contracts — Modified Pipeline/Tunnel Alignment (Alternative 4)

DRAFT: 28 Mar 2015



T:\WG\38\GIS_33_00\GISRequest_11\FIC\FIC098_14\IEREIS_CCO_48K_Mapbook.mxd 2015328

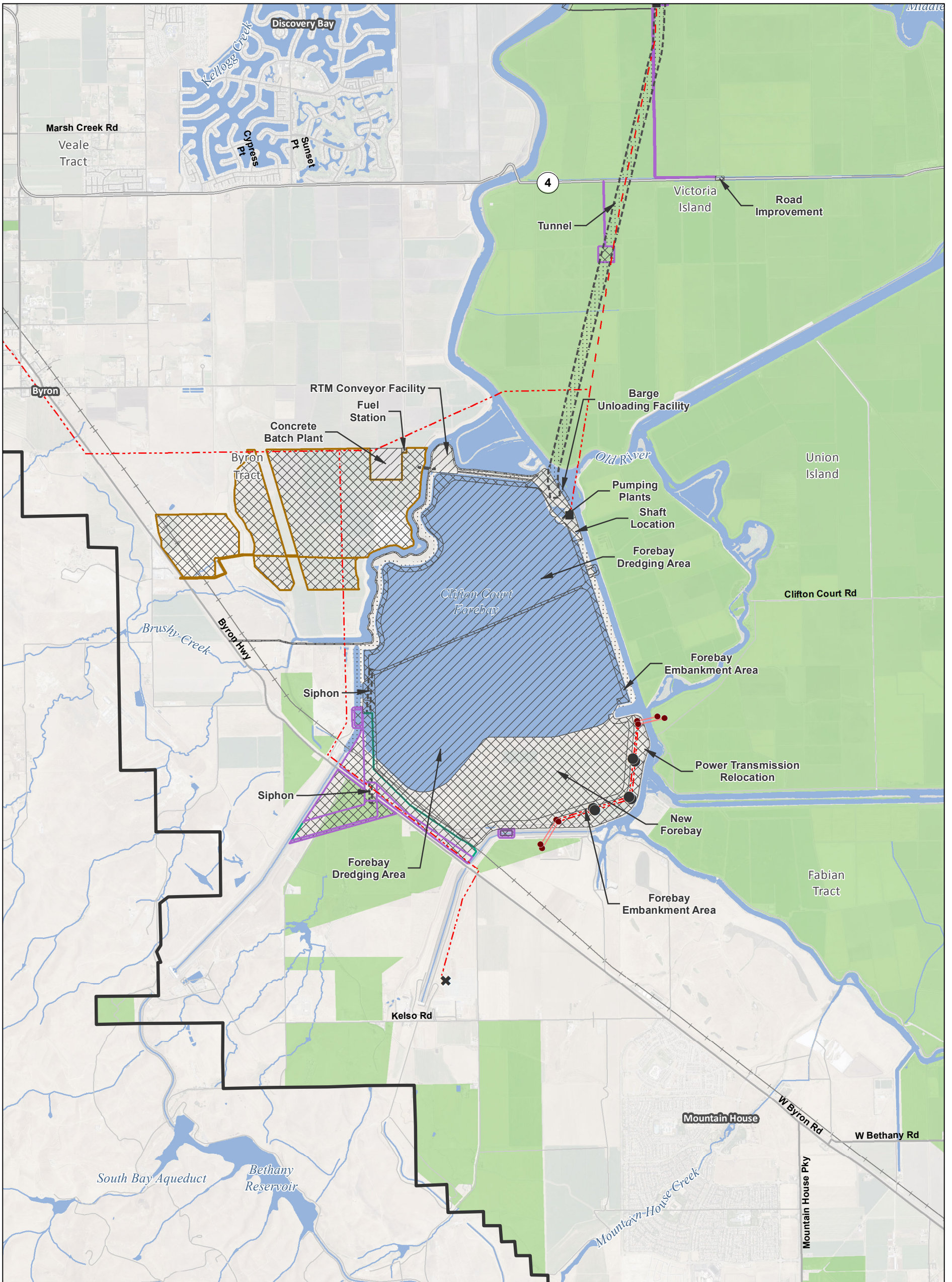
Legend 		<p>Proposed Power</p> <ul style="list-style-type: none"> ■ Substation ● Proposed Tower Relocation ✕ Interconnection Point ● Existing Tower --- Permanent OH Transmission Line - - - Temporary OH Transmission Line - Existing Permanent OH Transmission Line 	<p>Williamson Act Lands</p> <p>■ Williamson Act Lands</p> <p>*Surface impacts are not expected to result from subsurface features. **In-river features are not a permanent impact to navigation. ***Surface impacts will only occur at sites selected for geotechnical explorations. See Ch. 3, Section 3.6.1.10 for more information</p>
<p>Conveyance Construction Footprint</p> <ul style="list-style-type: none"> ■ Permanent Subsurface Impact ■ Temporary Surface Impact ⋯ Geotechnical Planning Area ■ Work Area □ Other ■ Permanent Surface Impact ■ Canal ■ Reusable Tunnel Material Area □ Other 			



Sources: Plan Area, ICF 2012; DWR DCE MPTO Construction Footprint (rev 5a); Williamson Act 2009

Figure M14-8: Sheet 5 of 8
Lands under Williamson Act Contracts — Modified Pipeline/Tunnel Alignment (Alternative 4)

DRAFT: 28 Mar 2015



Legend

<ul style="list-style-type: none"> Plan Area Areas of Additional Analysis (Outside of Legal Delta; for Power Only) 	<ul style="list-style-type: none"> Permanent Subsurface Impact Temporary Surface Impact Geotechnical Planning Area Work Area Other Permanent Surface Impact Canal Reusable Tunnel Material Area Other 	<ul style="list-style-type: none"> Substation Proposed Tower Relocation Interconnection Point Existing Tower Permanent OH Transmission Line Temporary OH Transmission Line Existing Permanent OH Transmission Line 	<ul style="list-style-type: none"> Williamson Act Lands
--	---	--	---

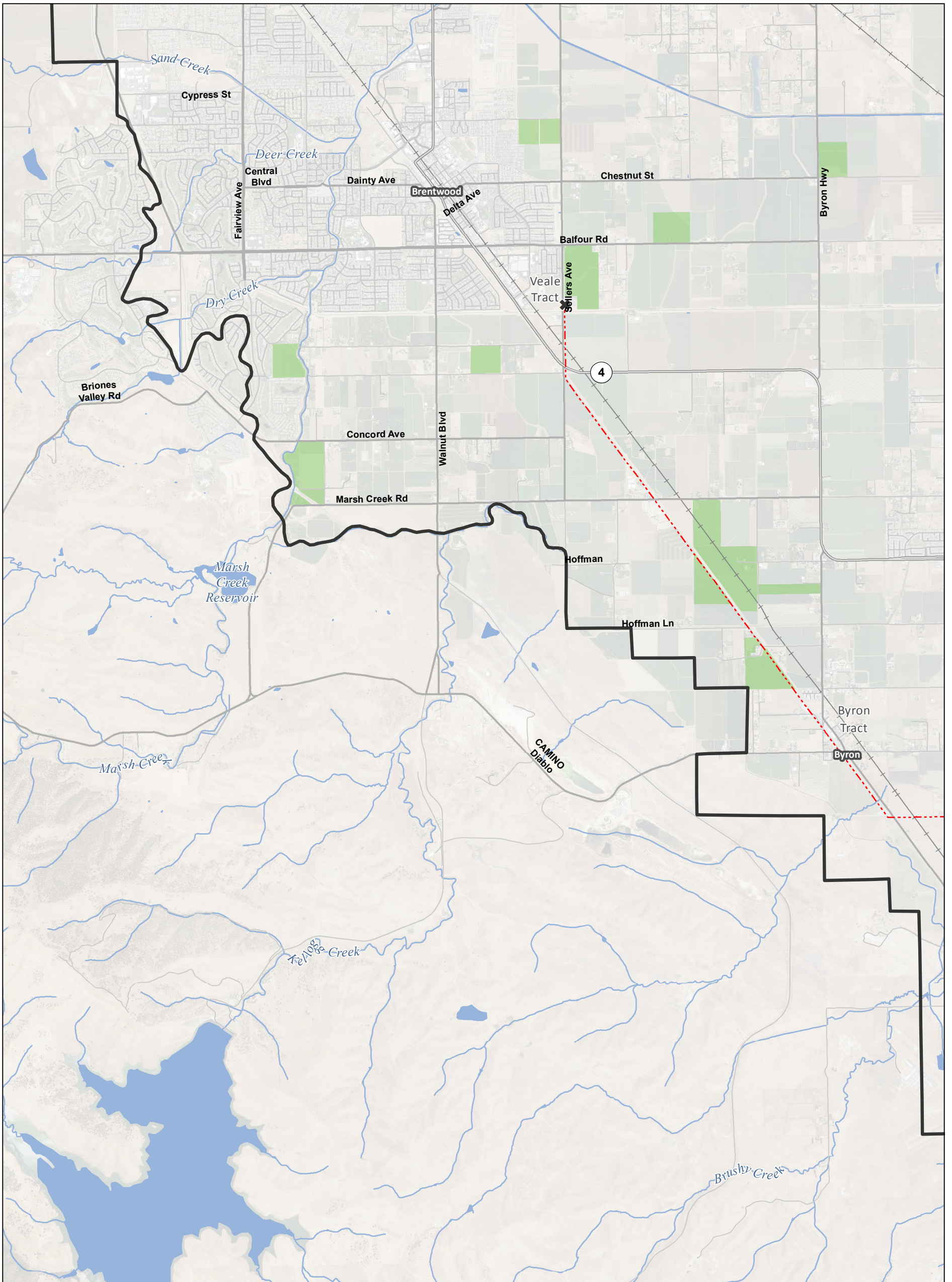
*Surface impacts are not expected to result from subsurface features.
 **In-river features are not a permanent impact to navigation.
 ***Surface impacts will only occur at sites selected for geotechnical explorations.
 See Ch. 3, Section 3.6.1.10 for more information

T:\WGI\GIS\33_00\GISRequest_11\FIC\FIC098_14\IEIRIS_CCO_48K_Mapbook.mxd 2015328

Sources: Plan Area, ICF 2012; DWR DCE MPTO Construction Footprint (rev 5a); Williamson Act 2009

DRAFT: 28 Mar 2015

Figure M14-8: Sheet 6 of 8
Lands under Williamson Act Contracts — Modified Pipeline/Tunnel Alignment (Alternative 4)



Legend		Conveyance Construction Footprint		Proposed Power		Williamson Act Lands	
Plan Area	Areas of Additional Analysis (Outside of Legal Delta; for Power Only)	Permanent Subsurface Impact	Temporary Surface Impact	Substation	Proposed Tower Relocation	Williamson Act Lands	
	Geotechnical Planning Area	Work Area	Other	Interconnection Point	Existing Tower		
	Permanent Surface Impact	Canal	Reusable Tunnel Material Area	Permanent OH Transmission Line	Temporary OH Transmission Line		
	Other	Other		Existing Permanent OH Transmission Line			

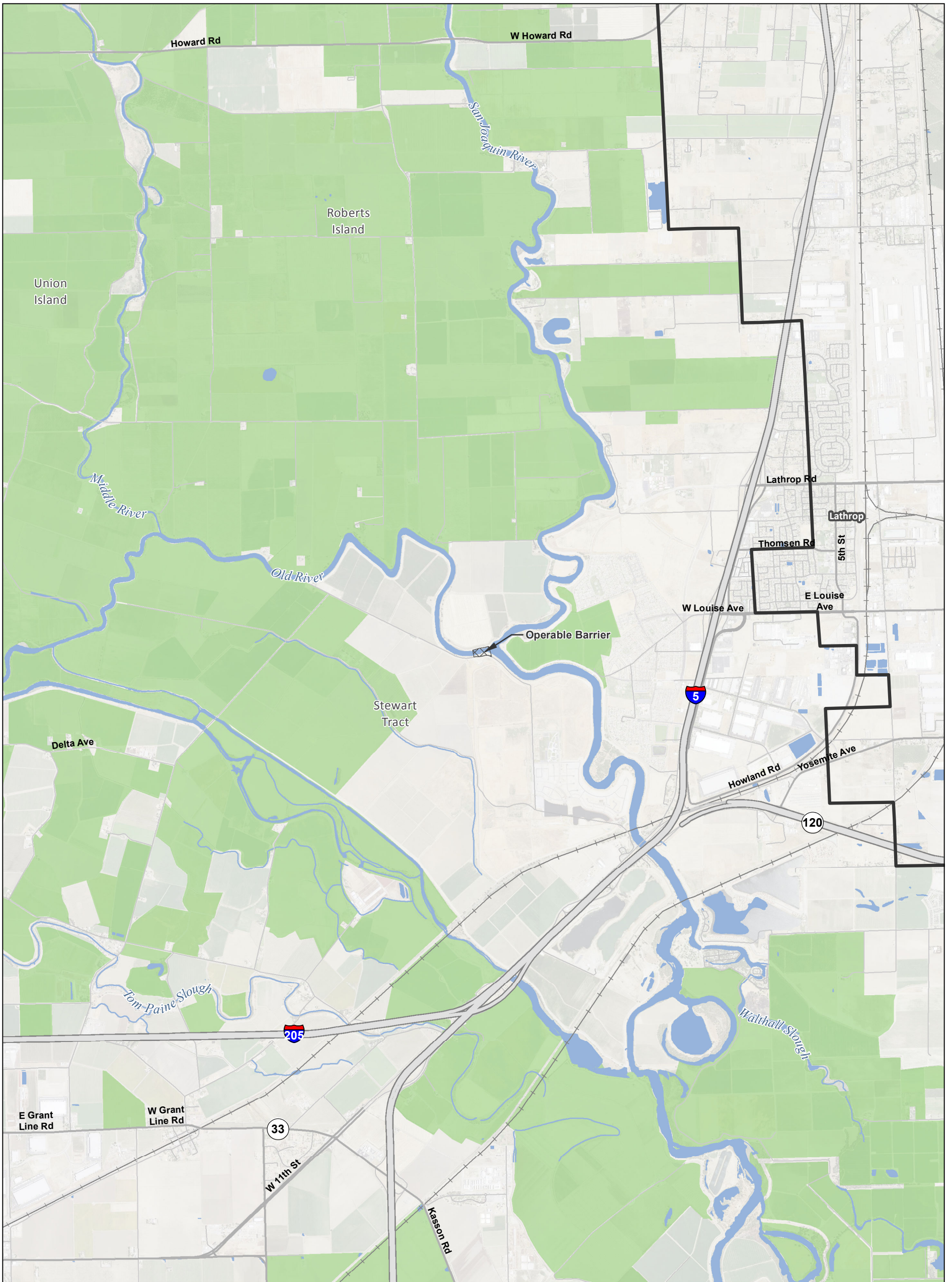
*Surface impacts are not expected to result from subsurface features.
 **In-river features are not a permanent impact to navigation.
 ***Surface impacts will only occur at sites selected for geotechnical explorations.
 See Ch. 3, Section 3.6.1.10 for more information

T:\WG\38\GIS_33_00\GISRequest_11\FIC\FIC098_14\IREIS_CCO_48K_Mapbook.mxd 2015328

Sources: Plan Area, ICF 2012; DWR DCE MPTO Construction Footprint (rev 5a); Williamson Act 2009

Figure M14-8: Sheet 7 of 8
Lands under Williamson Act Contracts — Modified Pipeline/Tunnel Alignment (Alternative 4)

DRAFT: 28 Mar 2015



Legend Plan Area Areas of Additional Analysis (Outside of Legal Delta; for Power Only)		Conveyance Construction Footprint Permanent Subsurface Impact Temporary Surface Impact Geotechnical Planning Area Work Area Other Permanent Surface Impact Canal Reusable Tunnel Material Area Other		Proposed Power Substation Proposed Tower Relocation Interconnection Point Existing Tower Permanent OH Transmission Line Temporary OH Transmission Line Existing Permanent OH Transmission Line		Williamson Act Lands	
---	--	--	--	--	--	----------------------	--

*Surface impacts are not expected to result from subsurface features.
 **In-river features are not a permanent impact to navigation.
 ***Surface impacts will only occur at sites selected for geotechnical explorations.
 See Ch. 3, Section 3.6.1.10 for more information

T:\WGI\38\GIS_33_00\GISRequest_11\FIC\FIC098_14\IREIS_CCO_48K_Mapbook.mxd 2015328

Sources: Plan Area, ICF 2012; DWR DCE MPTO Construction Footprint (rev 5a); Williamson Act 2009

DRAFT: 28 Mar 2015

Figure M14-8: Sheet 8 of 8
Lands under Williamson Act Contracts — Modified Pipeline/Tunnel Alignment (Alternative 4)