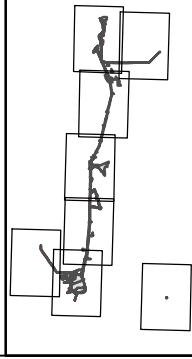


Legend

- | | | | |
|--|--|--|--|
| <ul style="list-style-type: none"> Interstate State Highway/Route Railroad Plan Area Areas of Additional Analysis (Outside of Legal Delta; for Power Only) Water | <ul style="list-style-type: none"> Conveyance Construction Footprint Permanent Subsurface Impact Temporary Surface Impact Geotechnical Exploration Zone Work Area Other Permanent Surface Impact Canal Reusable Tunnel Material Area Other | <ul style="list-style-type: none"> Proposed Power Substation Proposed Tower Relocation Interconnection Point Existing Power Existing Tower | <ul style="list-style-type: none"> Proposed Power Permanent OH Transmission Line Temporary OH Transmission Line Existing Power Existing Permanent OH Transmission Line |
|--|--|--|--|

*Surface impacts are not expected to result from subsurface features. **In-river features are not a permanent impact to navigation.

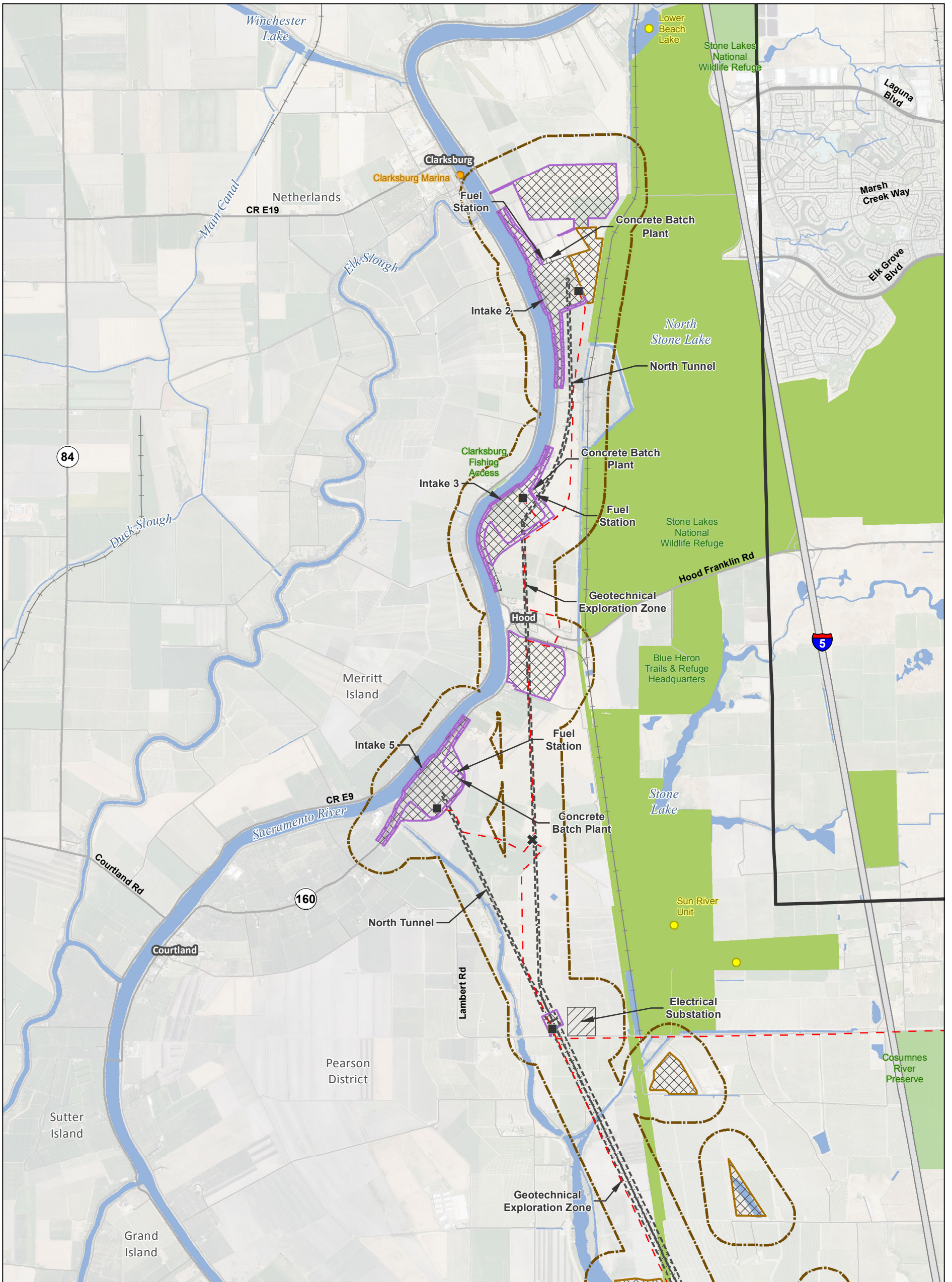


T:\WGI\38\GIS_33_00\GISRequest_11\FIC\FIC098_14\IEREIS_Mapbook_Index48K.mxd 2015330

Sources: DWR DHCCP MPTO Construction Footprint (rev 5a), ICF 2012; NAIP 2012

Figure M15-4: Index Recreation Facilities — Modified Pipeline/Tunnel Alignment (Alternative 4)

DRAFT: 31 Mar 2015



<p>Legend</p> <ul style="list-style-type: none"> Plan Area Areas of Additional (Outside of Legal Delta; for Power Only) Conveyance Construction Footprint Permanent Subsurface Impact 	<p>Temporary Surface Impact</p> <ul style="list-style-type: none"> Geotechnical Planning Area Work Area Other <p>Permanent Surface Impact</p> <ul style="list-style-type: none"> Canal Reusable Tunnel Material Other 	<p>Proposed Power</p> <ul style="list-style-type: none"> Substation Proposed Tower Relocation Proposed Power Interconnection Point <p>Existing Power</p> <ul style="list-style-type: none"> Existing Tower 	<ul style="list-style-type: none"> Permanent OH Transmission Line Temporary OH Transmission Line Existing Permanent OH Transmission Line <p>Existing Recreation Facilities</p> <ul style="list-style-type: none"> Public Private 	<p>Recreation Area</p> <ul style="list-style-type: none"> Impact Area Recreation Areas National Wildlife Refuge
---	--	--	--	--

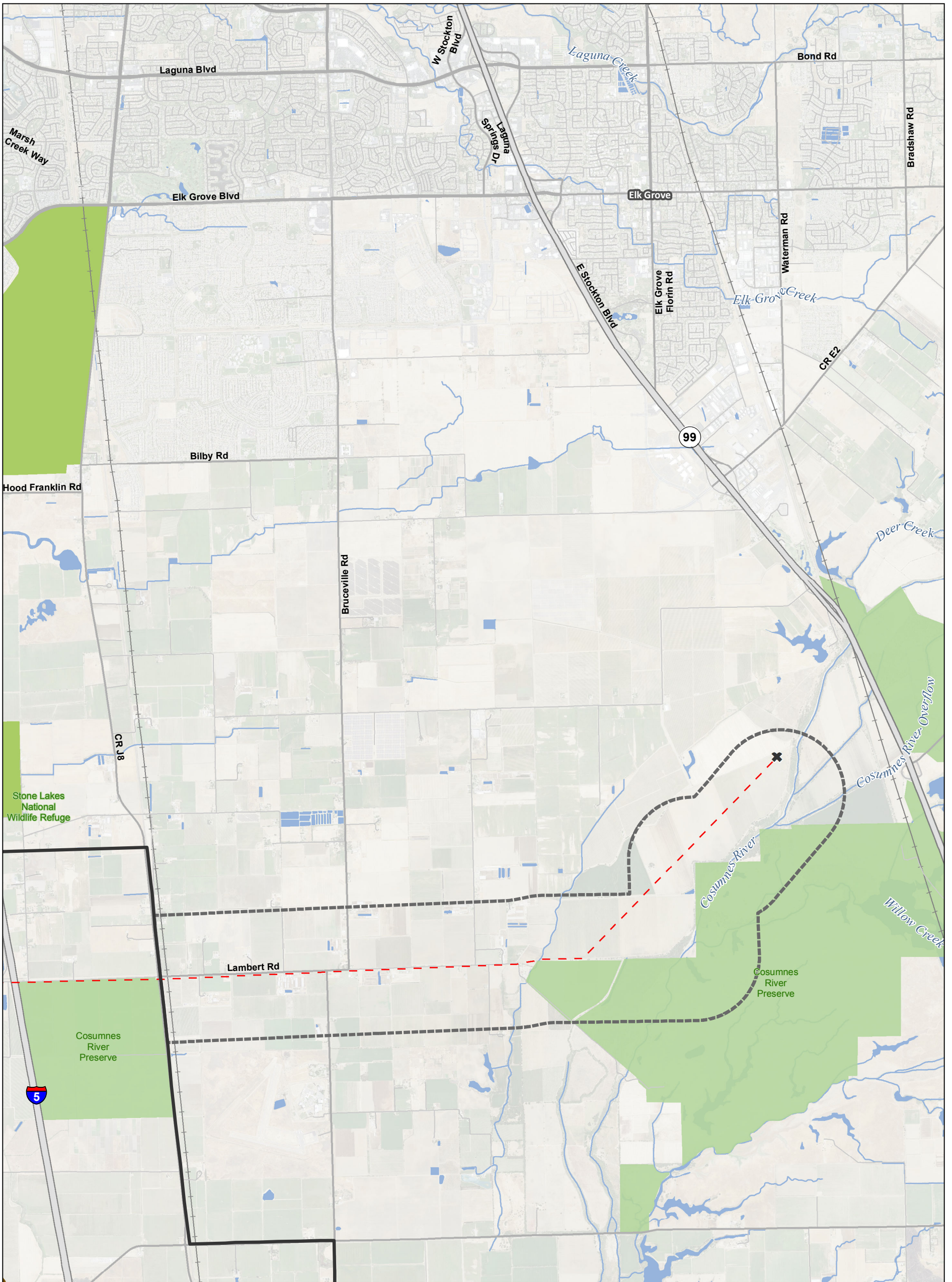
*Surface impacts are not expected to result from subsurface features. **In-river features are not a permanent impact to navigation. ***Surface impacts will only occur at sites selected for geotechnical explorations. See Ch. 3, Section 3.6.1.10 for more information

T:\WG\GIS\GIS_33_00\GISRequest_11\FIC\FIC098_14\IEREIS_CCO_48K_Mapbook_Rec.mxd 2015331

Sources: Plan Area, ICF 2012; DWR DCE MPTO Construction Footprint (rev 5a); Recreation Facilities, AECOM 2012, GreenInfo Network 2011, USFWS 2011; NAIP 2012

Figure M15-4: Sheet 1 of 8
Recreation Facilities — Modified Pipeline/Tunnel Alignment (Alternative 4)

DRAFT: 31 Mar 2015



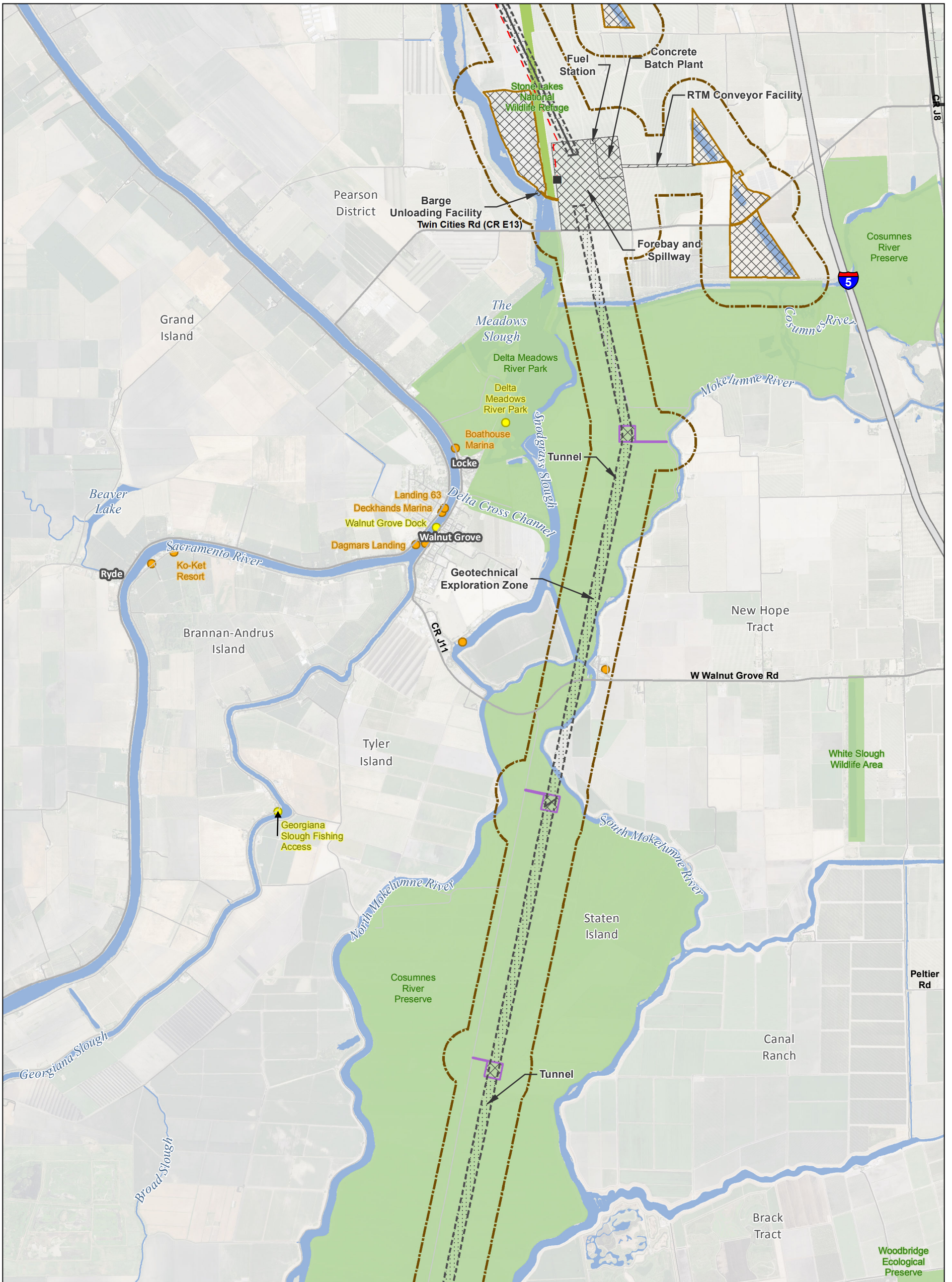
T:\WGI\38\GIS_33_00\GISRequest_11\FIC\FIC098_14\IEIREIS_CCO_48K_Mapbook_Rec.mxd 2015331

Legend 		Proposed Power 				Recreation Area 	
 		<p>*Surface impacts are not expected to result from subsurface features.</p> <p>**In-river features are not a permanent impact to navigation.</p>		<p>***Surface impacts will only occur at sites selected for geotechnical explorations. See Ch. 3, Section 3.6.1.10 for more information</p>			

Sources: Plan Area, ICF 2012; DWR DCE MPTO Construction Footprint (rev 5a); Recreation Facilities, AECOM 2012, GreenInfo Network 2011, USFWS 2011; NAIP 2012

DRAFT: 31 Mar 2015

**Figure M15-4: Sheet 2 of 8
Recreation Facilities — Modified Pipeline/Tunnel Alignment (Alternative 4)**



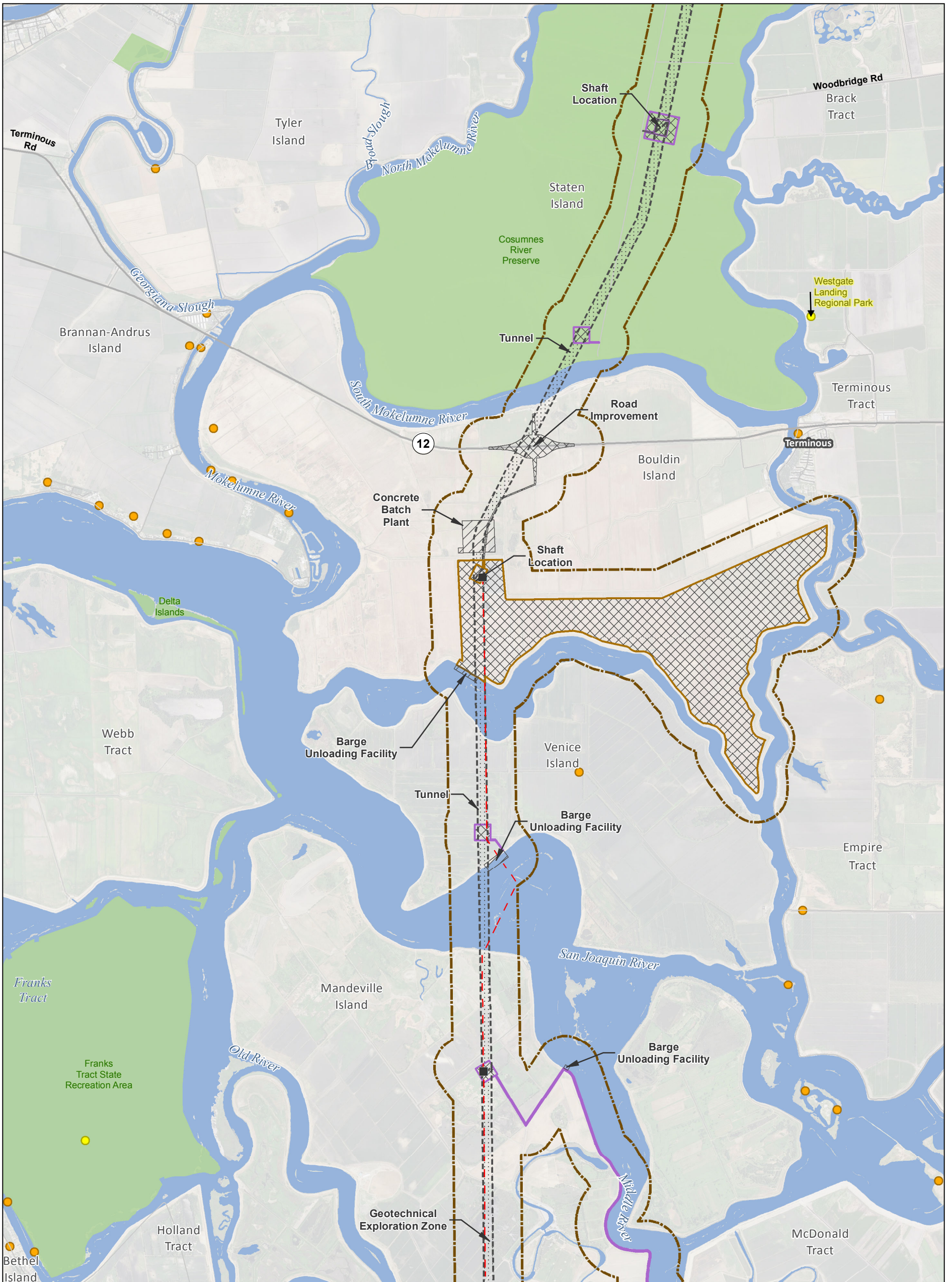
Legend 		
<p>0 3,000 6,000 Feet 1:48,000</p> <p>*Surface impacts are not expected to result from subsurface features.</p>	<p>**In-river features are not a permanent impact to navigation.</p> <p>***Surface impacts will only occur at sites selected for geotechnical explorations. See Ch. 3, Section 3.6.1.10 for more information</p>	

T:\WG\38\GIS_33_00\GISRequest_11\FIC\FIC098_14\IREIS_CCO_48K_Mapbook_Rec.mxd 2015331

Sources: Plan Area, ICF 2012; DWR DCE MPTO Construction Footprint (rev 5a); Recreation Facilities, AECOM 2012, GreenInfo Network 2011, USFWS 2011; NAIP 2012

DRAFT: 31 Mar 2015

**Figure M15-4: Sheet 3 of 8
Recreation Facilities — Modified Pipeline/Tunnel Alignment (Alternative 4)**



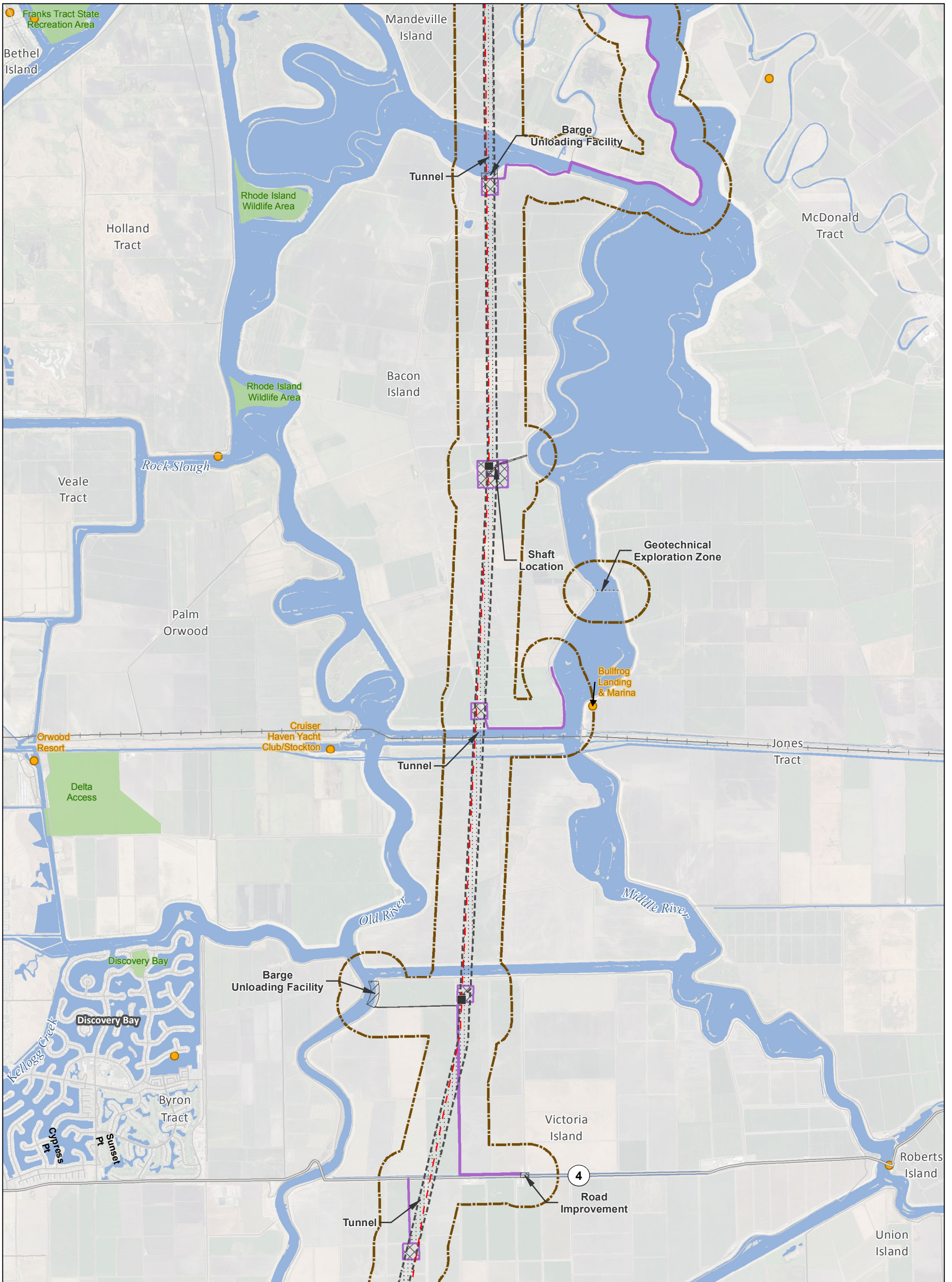
T:\WG\GIS\33_00\GISRequest_11\FIC\FIC098_14\IEREIS_CCO_48K_Mapbook_Recr.mxd 2015331

Legend 	
Plan Area 	Temporary Surface Impact Geotechnical Planning Area Work Area Other
Conveyance Construction Footprint Permanent Subsurface Impact	Permanent Surface Impact Canal Reusable Tunnel Material Other
Proposed Power Substation Proposed Tower Relocation Interconnection Point Existing Power Existing Tower	Transmission Lines Permanent OH Transmission Line Temporary OH Transmission Line Existing Permanent OH Transmission Line Existing Recreation Facilities Public Private
 	<p>***Surface impacts will only occur at sites selected for geotechnical explorations. See Ch. 3, Section 3.6.1.10 for more information</p>

Sources: Plan Area, ICF 2012; DWR DCE MPTO Construction Footprint (rev 5a); Recreation Facilities, AECOM 2012, GreenInfo Network 2011, USFWS 2011; NAIP 2012

Figure M15-4: Sheet 4 of 8
Recreation Facilities — Modified Pipeline/Tunnel Alignment (Alternative 4)

DRAFT: 31 Mar 2015



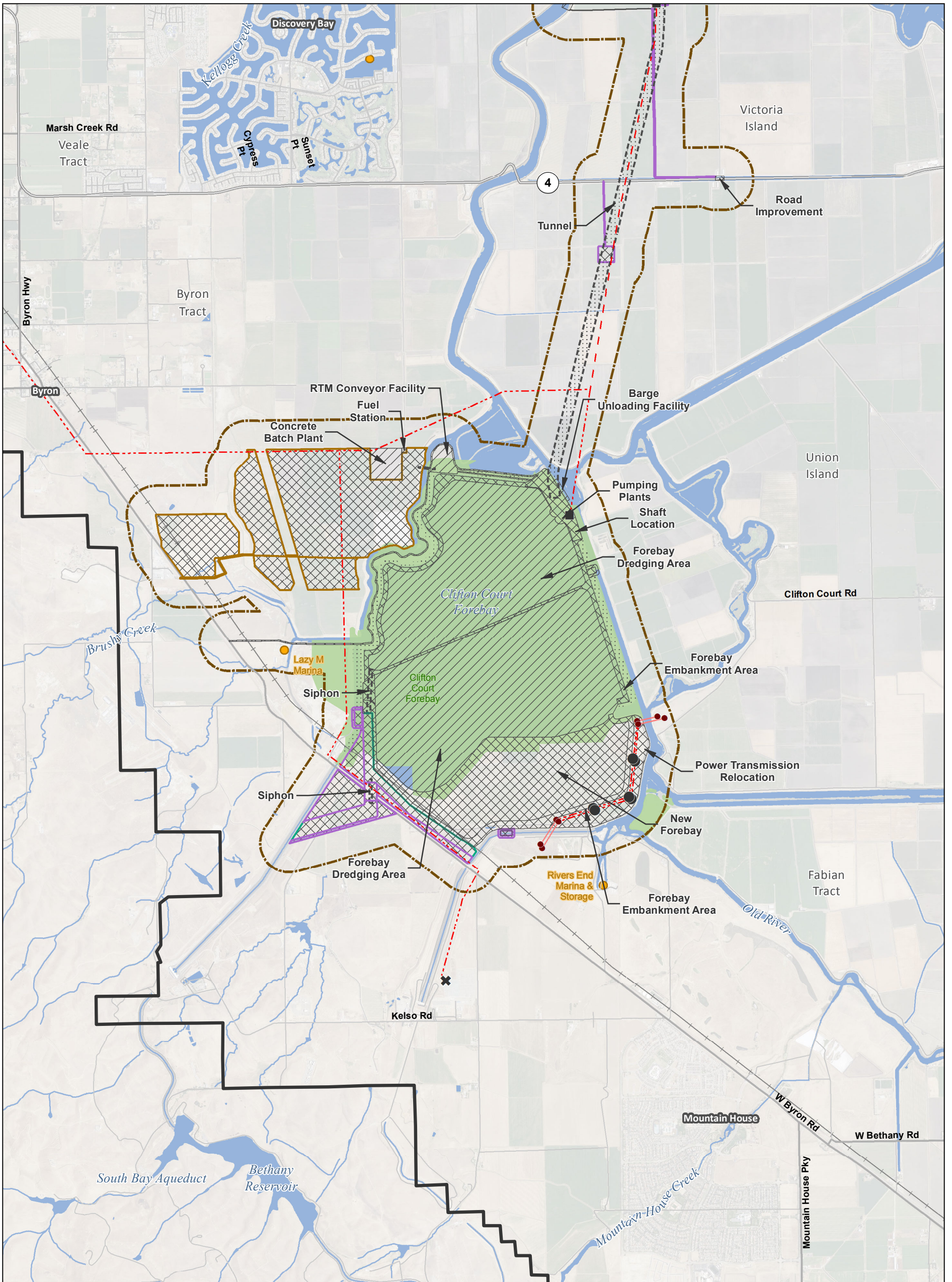
T:\WGI\38\GIS_33_00\GISRequest_11\FIC\FIC098_14\IEREIS_CCO_48K_Mapbook_Recr.mxd 2015331

Legend 			<p>***Surface impacts will only occur at sites selected for geotechnical explorations. See Ch. 3, Section 3.6.1.10 for more information</p>
<p>*Surface impacts are not expected to result from subsurface features. **In-river features are not a permanent impact to navigation.</p>			

Sources: Plan Area, ICF 2012; DWR DCE MPTO Construction Footprint (rev 5a); Recreation Facilities, AECOM 2012, GreenInfo Network 2011, USFWS 2011; NAIP 2012

Figure M15-4: Sheet 5 of 8
Recreation Facilities — Modified Pipeline/Tunnel Alignment (Alternative 4)

DRAFT: 31 Mar 2015



T:\WG\38\GIS_33_00\GISRequest_11\FIC\FIC098_14\IEREIS_CCO_48K_Mapbook_Rec.mxd 2015331

Legend <ul style="list-style-type: none"> Plan Area Areas of Additional (Outside of Legal Delta; for Power Only) Conveyance Construction Footprint Permanent Subsurface Impact 		Temporary Surface Impact <ul style="list-style-type: none"> Geotechnical Planning Area Work Area Other 		Proposed Power <ul style="list-style-type: none"> Substation Proposed Tower Relocation Proposed Power Interconnection Point 		<ul style="list-style-type: none"> Permanent OH Transmission Line Temporary OH Transmission Line Existing Permanent OH Transmission Line 		Recreation Area <ul style="list-style-type: none"> Impact Area Recreation Areas National Wildlife Refuge 	
Permanent Surface Impact <ul style="list-style-type: none"> Canal Reusable Tunnel Material Other 		Existing Power <ul style="list-style-type: none"> Existing Tower 		Existing Recreation Facilities <ul style="list-style-type: none"> Public Private 		<p>***Surface impacts will only occur at sites selected for geotechnical explorations. See Ch. 3, Section 3.6.1.10 for more information</p>			

0 3,000 6,000
Feet
1:48,000

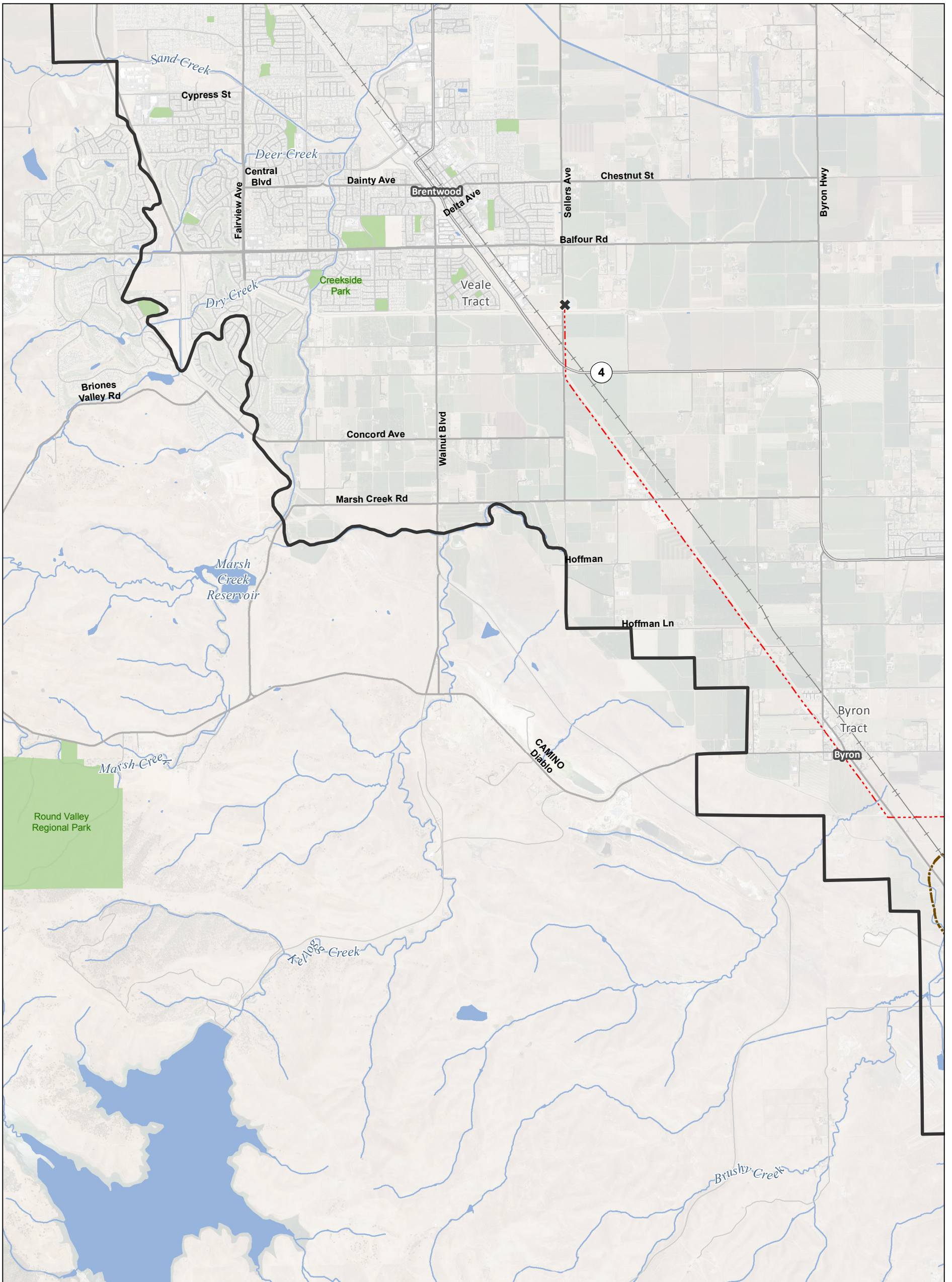
*Surface impacts are not expected to result from subsurface features.

**In-river features are not a permanent impact to navigation.

Sources: Plan Area, ICF 2012; DWR DCE MPTO Construction Footprint (rev 5a); Recreation Facilities, AECOM 2012, GreenInfo Network 2011, USFWS 2011; NAIP 2012

DRAFT: 31 Mar 2015

**Figure M15-4: Sheet 6 of 8
Recreation Facilities — Modified Pipeline/Tunnel Alignment (Alternative 4)**

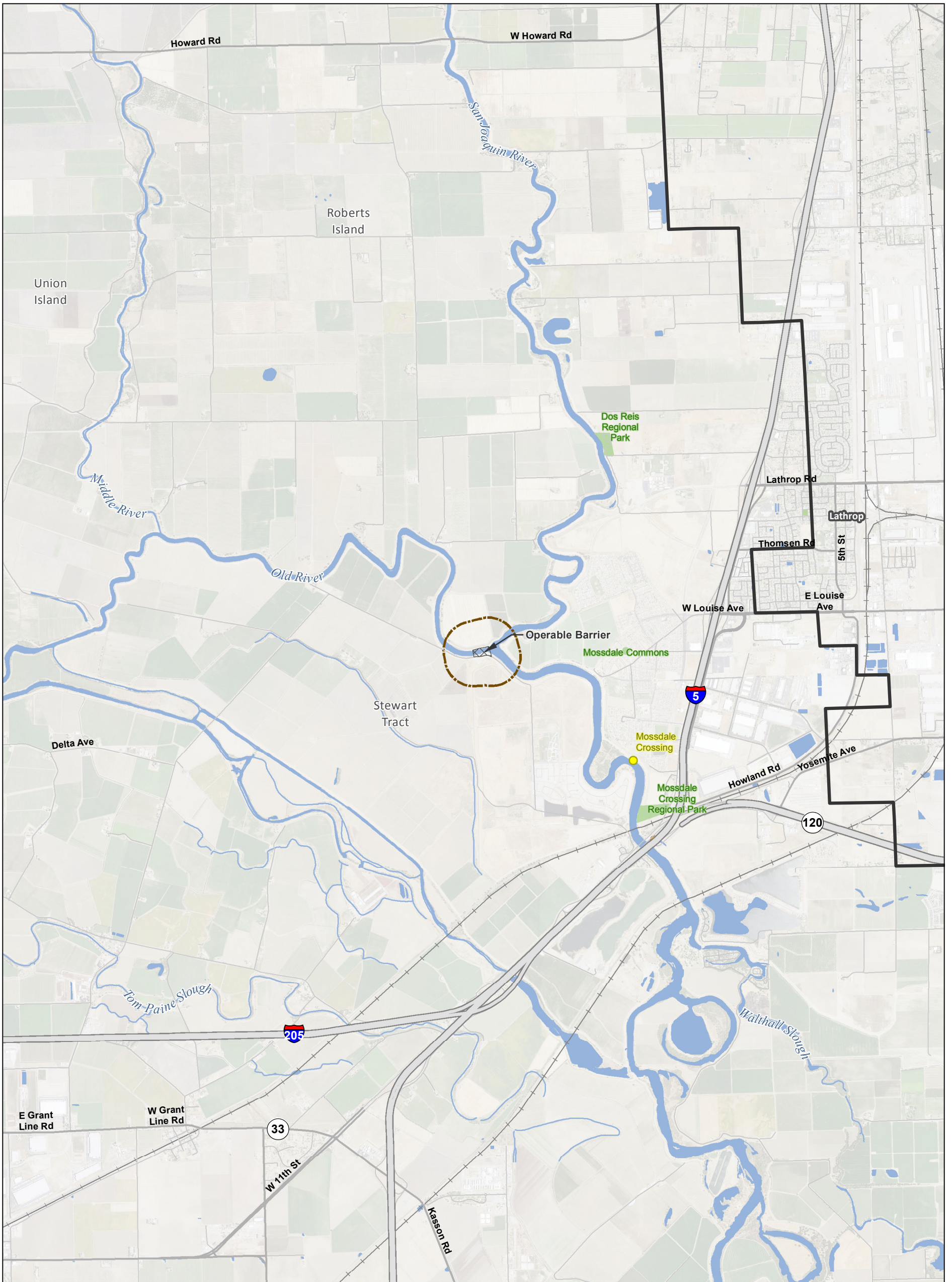


T:\WG\38\GIS_33_00\GISRequest_11\FIC\FIC098_14\IREIS_CCO_48K_Mapbook_Recr.mxd 2015331

Legend <ul style="list-style-type: none"> Plan Area Areas of Additional (Outside of Legal Delta; for Power Only) Conveyance Construction Footprint Permanent Subsurface Impact 		Temporary Surface Impact <ul style="list-style-type: none"> Geotechnical Planning Area Work Area Other 		Proposed Power <ul style="list-style-type: none"> Substation Proposed Tower Relocation Proposed Power Interconnection Point 		<ul style="list-style-type: none"> Permanent OH Transmission Line Temporary OH Transmission Line Existing Permanent OH Transmission Line 		Recreation Area <ul style="list-style-type: none"> Impact Area Recreation Areas National Wildlife Refuge 	
Existing Recreation Facilities <ul style="list-style-type: none"> Public Private 		Existing Power <ul style="list-style-type: none"> Existing Tower 		<p>***Surface impacts will only occur at sites selected for geotechnical explorations. See Ch. 3, Section 3.6.1.10 for more information</p>					

*Surface impacts are not expected to result from subsurface features. **In-river features are not a permanent impact to navigation.

Sources: Plan Area, ICF 2012; DWR DCE MPTO Construction Footprint (rev 5a); Recreation Facilities, AECOM 2012, GreenInfo Network 2011, USFWS 2011; NAIP 2012



T:\WG\38\GIS_33_00\GISRequest_11\FIC\FIC098_14\IEREIS_CCO_48K_Mapbook_Rec.mxd 2015331

Legend 		<p>***Surface impacts will only occur at sites selected for geotechnical explorations. See Ch. 3, Section 3.6.1.10 for more information</p>
<p>*Surface impacts are not expected to result from subsurface features. **In-river features are not a permanent impact to navigation.</p>		

Sources: Plan Area, ICF 2012; DWR DCE MPTO Construction Footprint (rev 5a); Recreation Facilities, AECOM 2012, GreenInfo Network 2011, USFWS 2011; NAIP 2012

Figure M15-4: Sheet 8 of 8

Recreation Facilities — Modified Pipeline/Tunnel Alignment (Alternative 4)

DRAFT: 31 Mar 2015