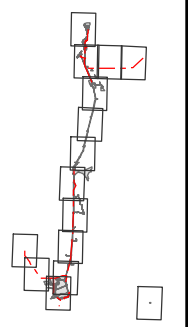


Legend

- | | | | |
|---|---|-------------------------------------|--|
| Interstate | Interconnection Point | Dredging | Proposed Temporary Surface Impact |
| State Highway/Route | Proposed Permanent OH Transmission Line | Forebay | Proposed Potential Borrow And/Or Spoil |
| Railroad | Proposed Temporary OH Transmission Line | Forebay Embankment | Reusable Tunnel Material Area |
| Plan Area | Canal | Forebay Overflow | Barge Unloading Facility |
| Areas of Additional Analysis (Outside of Legal Delta; for Power Only) | Operable Barrier | Intake | Safe Haven Work Area |
| Water | Permanent Access Road | *Proposed Subsurface Easement | Fuel Station |
| | Siphon | **Proposed Permanent Surface Impact | Concrete Batch Plant |
| | Temporary Access Road | | Geotech Planning Area |
| | Tunnel | | |
| | Tunnel Conveyor | | |

*Surface impacts are not expected to result from subsurface features. **In-river features are not a permanent impact to navigation. ***Surface impacts will only occur at sites selected for geotechnical explorations. See Ch. 3, Section 3.6.1.10 for more information

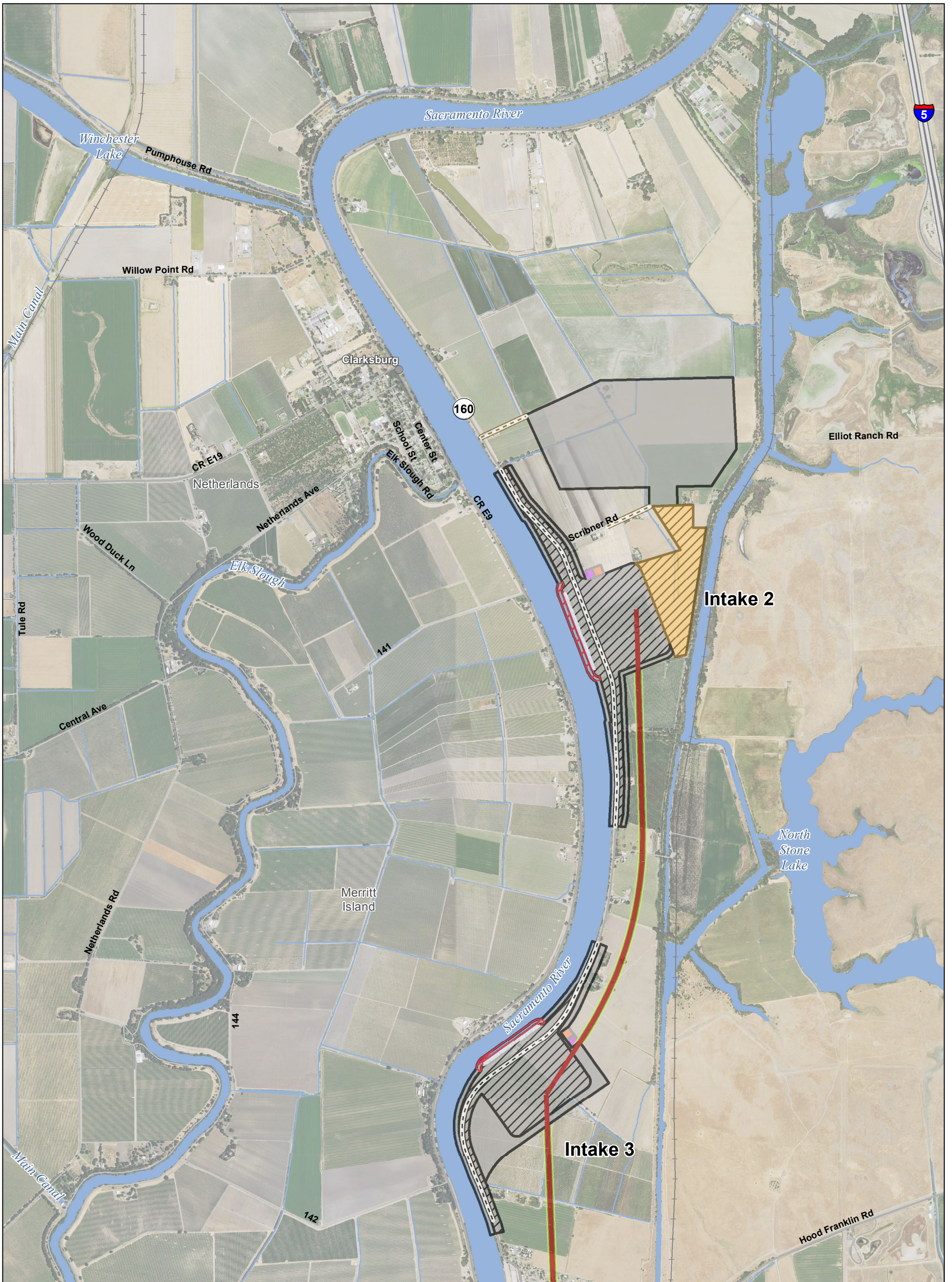


T:\WGI\38\GIS_33_00\GISRequest_11\FIC\FIC098_14\IREIS_Mapbook_Ch3_Index.mxd 2015330

Sources: DWR DHCCP Engineering (rev 5a); NAIP 2014

Figure M3-4: Index Modified Pipeline/Tunnel Alignment (Alternatives 4)

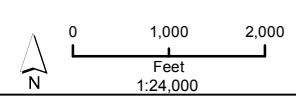
DRAFT: 30 Mar 2015



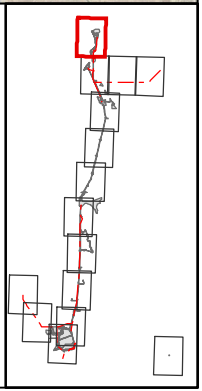
T:\WG\38\GIS_33_00\GISRequest_11\FIC\FIC098_14\IEREIS_MPTO_Mapbook_Ch3.mxd 2015330

Legend

- | | | | |
|--|-----------------------|--------------------------|--|
| Plan Area | Canal | Dredging | *Proposed Subsurface Easement |
| Areas of Additional Analysis
(Outside of Legal Delta; for Power Only) | Operable Barrier | Forebay | **Proposed Permanent Surface Impact |
| Interconnection Point | Permanent Access Road | Forebay Embankment | Proposed Temporary Surface Impact |
| Proposed Permanent OH Transmission Line | Siphon | Forebay Overflow | Proposed Potential Borrow And/Or Spoil |
| Proposed Temporary OH Transmission Line | Temporary Access Road | Intake | Reusable Tunnel Material Area |
| Tunnel | Geotech Planning Area | Barge Unloading Facility | Safe Haven Work Area |
| Tunnel Conveyor | | Fuel Station | Concrete Batch Plant |



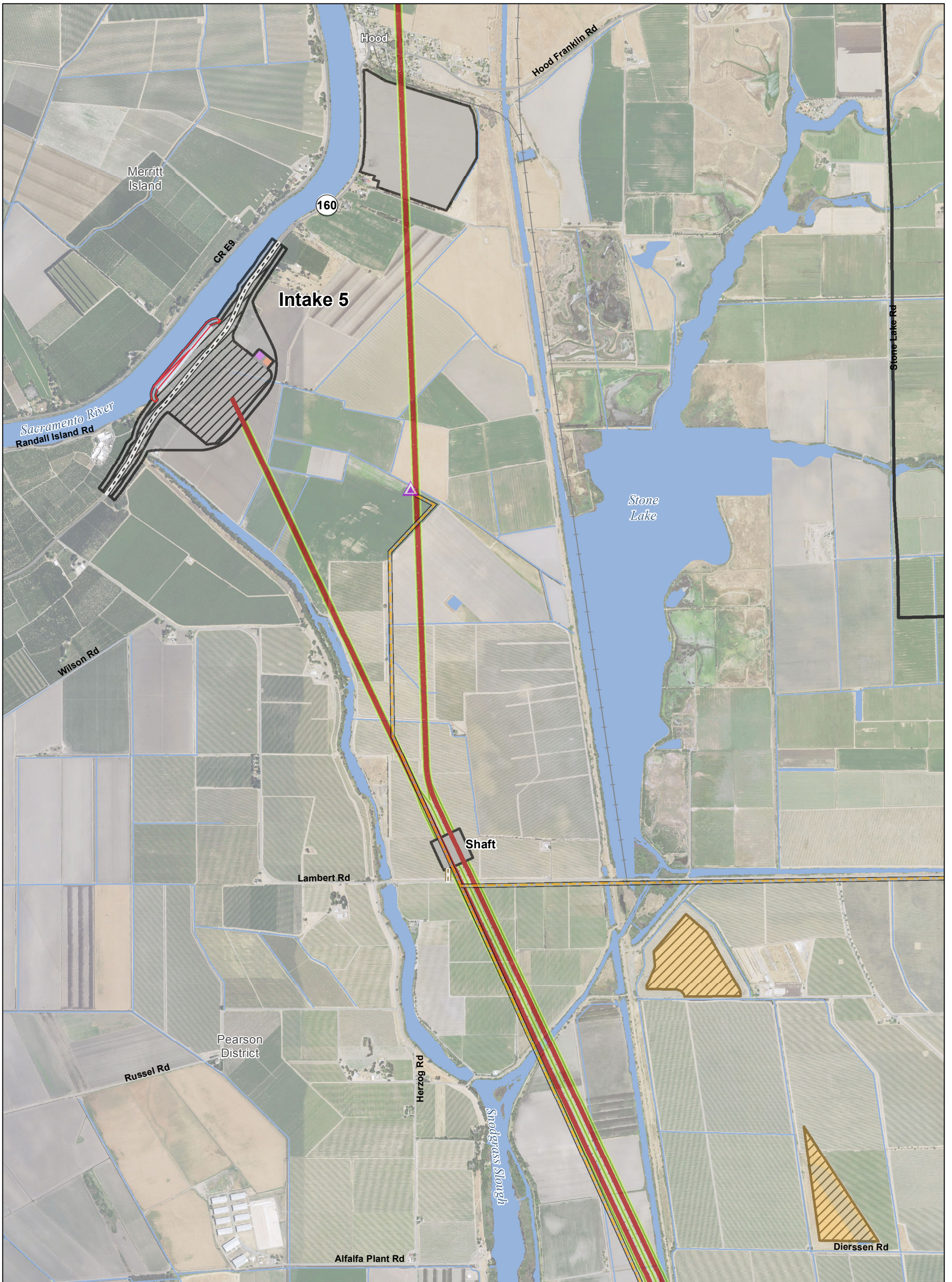
*Surface impacts are not expected to result from subsurface features.
 **In-river features are not a permanent impact to navigation.
 ***Surface impacts will only occur at sites selected for geotechnical explorations.
 See Ch. 3, Section 3.6.1.10 for more information



Sources: Plan Area, SAIC 2010; DWR DHCCP Engineering (rev 5a); NAIP 2014

ADMINISTRATIVE DRAFT
Version Date: 30 Mar 2015

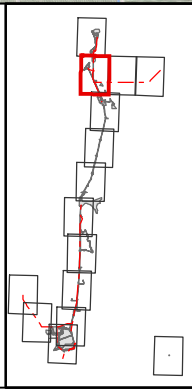
Figure M3-4: Sheet 1 of 15
Modified Pipeline/Tunnel Alignment (Alternative 4)



T:\WG\38\GIS_33_00\GISRequest_11\FIC\FIC098_14\IREIS_MPTO_Mapbook_Ch3.mxd 2015330

Legend

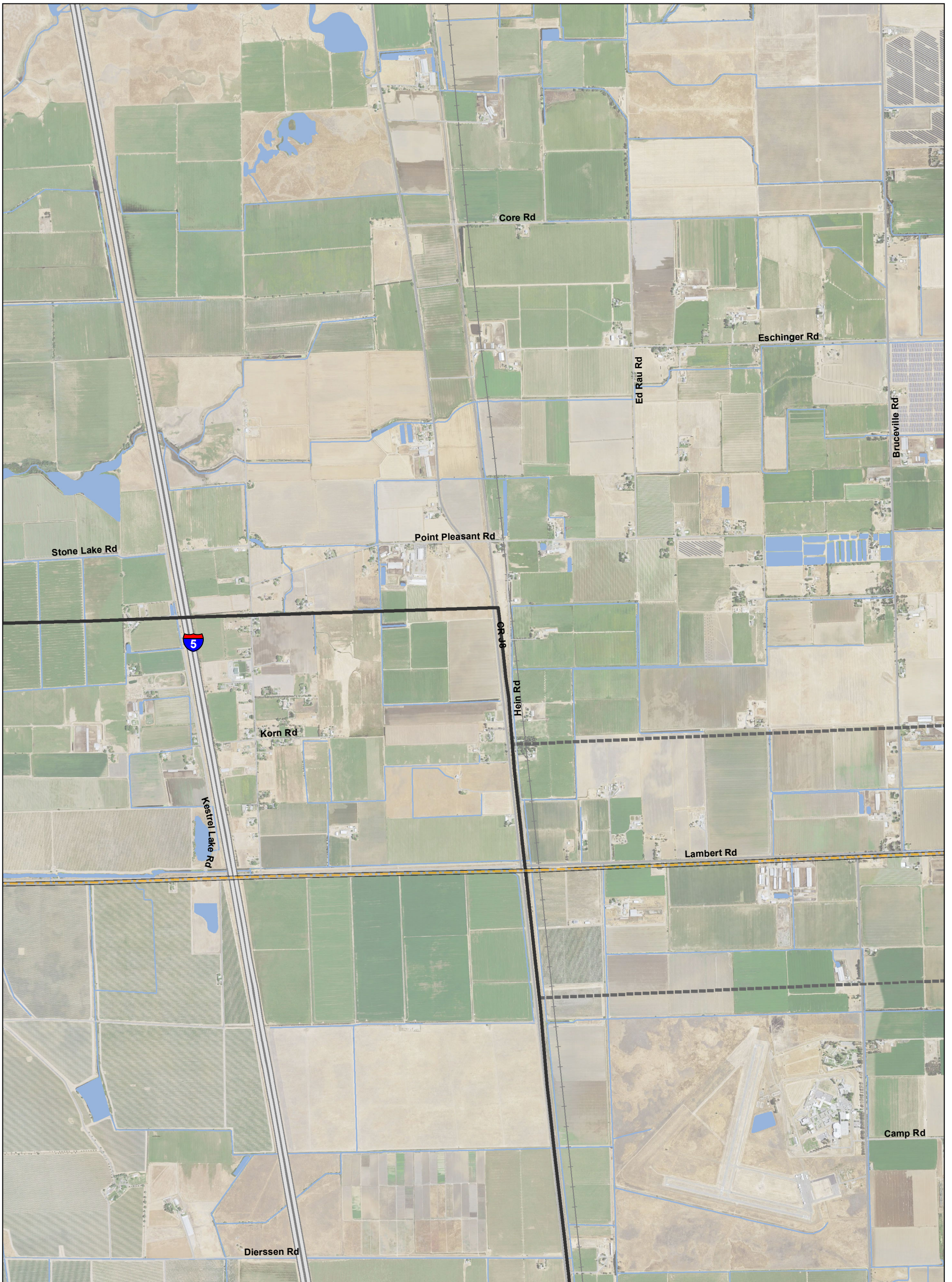
- | | | | |
|--|-----------------------|--------------------------|--|
| Plan Area | Canal | Dredging | *Proposed Subsurface Easement |
| Areas of Additional Analysis
(Outside of Legal Delta; for Power Only) | Operable Barrier | Forebay | **Proposed Permanent Surface Impact |
| Interconnection Point | Permanent Access Road | Forebay Embankment | Proposed Temporary Surface Impact |
| Proposed Permanent OH Transmission Line | Siphon | Forebay Overflow | Proposed Potential Borrow And/Or Spoil |
| Proposed Temporary OH Transmission Line | Temporary Access Road | Intake | Reusable Tunnel Material Area |
| Tunnel | Geotech Planning Area | Barge Unloading Facility | Safe Haven Work Area |
| Tunnel Conveyor | | Fuel Station | Concrete Batch Plant |
- *Surface impacts are not expected to result from subsurface features.
 **In-river features are not a permanent impact to navigation.
 ***Surface impacts will only occur at sites selected for geotechnical explorations.
 See Ch. 3, Section 3.6.1.10 for more information



Sources: Plan Area, SAIC 2010; DWR DHCCP Engineering (rev 5a); NAIP 2014

ADMINISTRATIVE DRAFT
Version Date: 30 Mar 2015

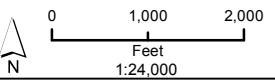
Figure M3-4: Sheet 2 of 15
Modified Pipeline/Tunnel Alignment (Alternative 4)



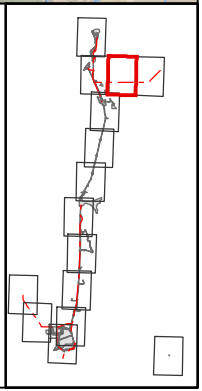
T:\WGI\38\GIS_33_00\GISRequest_11\FIC\FIC098_14\IEREIS_MPTO_Mapbook_Ch3.mxd 2015330

Legend

- | | | | |
|--|-----------------------|--------------------------|--|
| Plan Area | Canal | Dredging | *Proposed Subsurface Easement |
| Areas of Additional Analysis
(Outside of Legal Delta; for Power Only) | Operable Barrier | Forebay | **Proposed Permanent Surface Impact |
| Interconnection Point | Permanent Access Road | Forebay Embankment | Proposed Temporary Surface Impact |
| Proposed Permanent OH Transmission Line | Siphon | Forebay Overflow | Proposed Potential Borrow And/Or Spoil |
| Proposed Temporary OH Transmission Line | Temporary Access Road | Intake | Reusable Tunnel Material Area |
| Tunnel Conveyor | Geotech Planning Area | Barge Unloading Facility | Safe Haven Work Area |
| | | Fuel Station | Concrete Batch Plant |



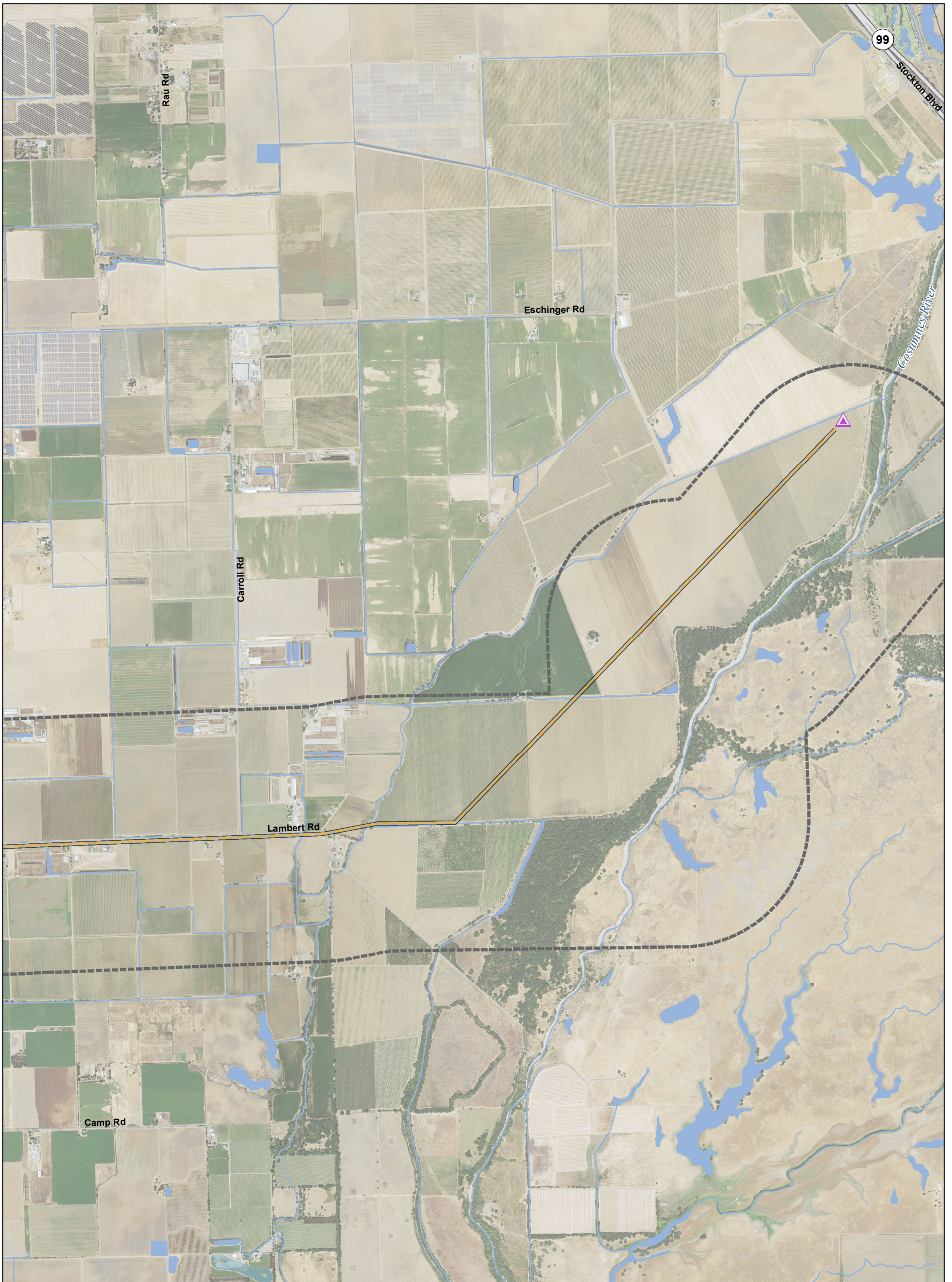
*Surface impacts are not expected to result from subsurface features.
 **In-river features are not a permanent impact to navigation.
 ***Surface impacts will only occur at sites selected for geotechnical explorations.
 See Ch. 3, Section 3.6.1.10 for more information



Sources: Plan Area, SAIC 2010; DWR DHCCP Engineering (rev 5a); NAIP 2014

ADMINISTRATIVE DRAFT
Version Date: 30 Mar 2015

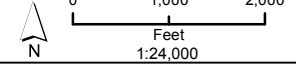
Figure M3-4: Sheet 3 of 15
Modified Pipeline/Tunnel Alignment (Alternative 4)



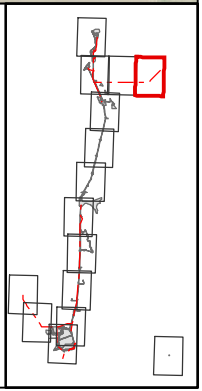
T:\WGI\38\GIS_33_00\GISRequest_11\FIC\FIC098_14\IEREIS_MPTO_Mapbook_Ch3.mxd 2015330

Legend

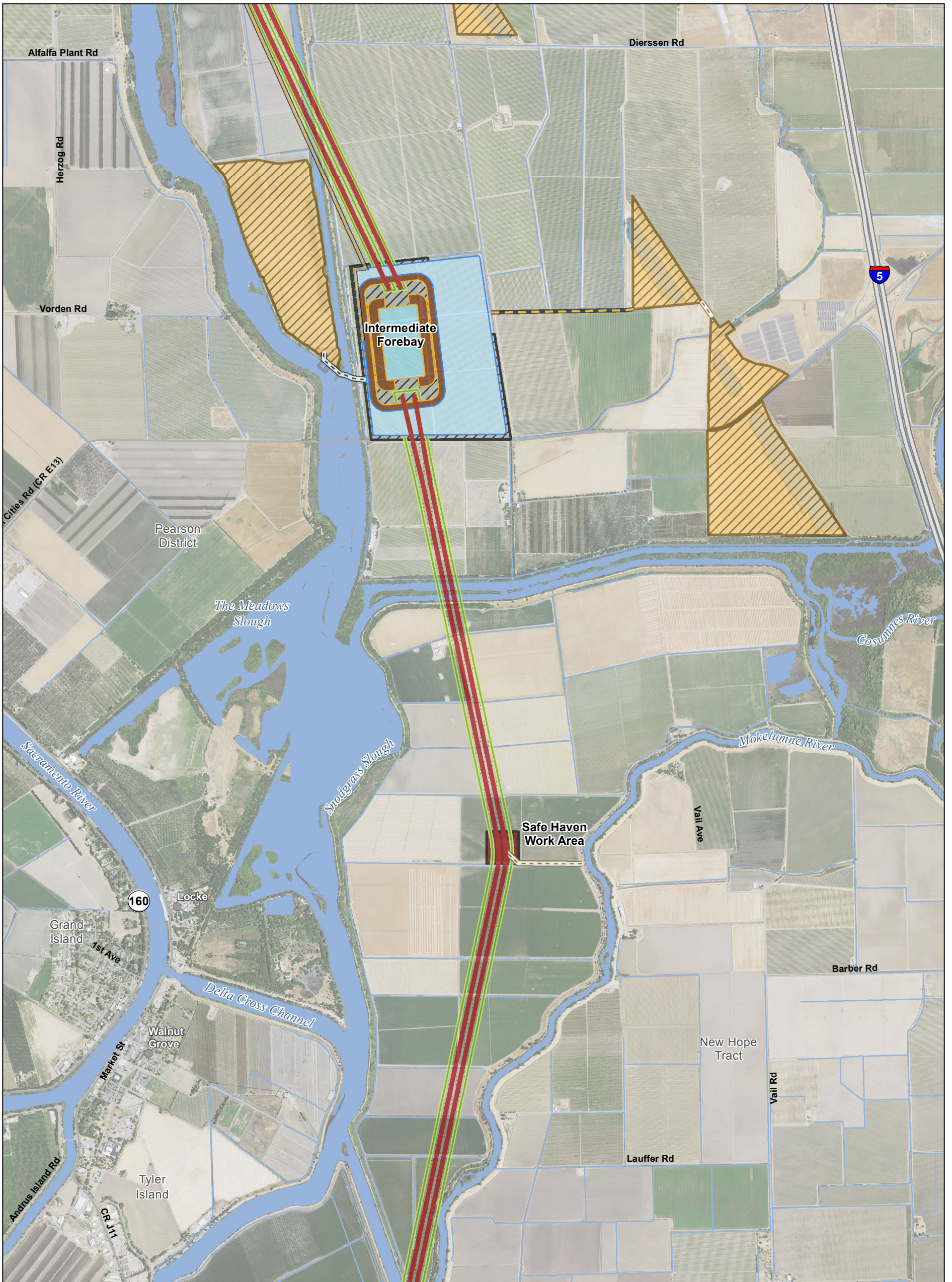
- | | | | |
|--|-----------------------|--------------------------|--|
| Plan Area | Canal | Dredging | *Proposed Subsurface Easement |
| Areas of Additional Analysis
(Outside of Legal Delta; for Power Only) | Operable Barrier | Forebay | **Proposed Permanent Surface Impact |
| Interconnection Point | Permanent Access Road | Forebay Embankment | Proposed Temporary Surface Impact |
| Proposed Permanent OH Transmission Line | Siphon | Forebay Overflow | Proposed Potential Borrow And/Or Spoil |
| Proposed Temporary OH Transmission Line | Temporary Access Road | Intake | Reusable Tunnel Material Area |
| Tunnel | Geotech Planning Area | Barge Unloading Facility | Safe Haven Work Area |
| Tunnel Conveyor | | Fuel Station | Concrete Batch Plant |



*Surface impacts are not expected to result from subsurface features.
 **In-river features are not a permanent impact to navigation.
 ***Surface impacts will only occur at sites selected for geotechnical explorations.
 See Ch. 3, Section 3.6.1.10 for more information



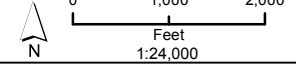
Sources: Plan Area, SAIC 2010; DWR DHCCP Engineering (rev 5a); NAIP 2014



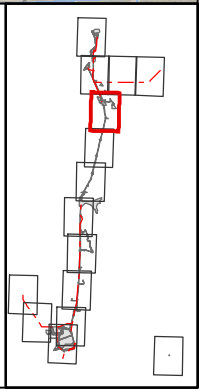
T:\WG\38\GIS_33_00\GISRequest_11\FIC\FIC098_14\IEREIS_MPTO_Mapbook_Ch3.mxd 2015330

Legend

- | | | | |
|--|-----------------------|--------------------------|--|
| Plan Area | Canal | Dredging | *Proposed Subsurface Easement |
| Areas of Additional Analysis
(Outside of Legal Delta; for Power Only) | Operable Barrier | Forebay | **Proposed Permanent Surface Impact |
| Interconnection Point | Permanent Access Road | Forebay Embankment | Proposed Temporary Surface Impact |
| Proposed Permanent OH Transmission Line | Siphon | Forebay Overflow | Proposed Potential Borrow And/Or Spoil |
| Proposed Temporary OH Transmission Line | Temporary Access Road | Intake | Reusable Tunnel Material Area |
| Tunnel | Geotech Planning Area | Barge Unloading Facility | Safe Haven Work Area |
| Tunnel Conveyor | | Fuel Station | Concrete Batch Plant |



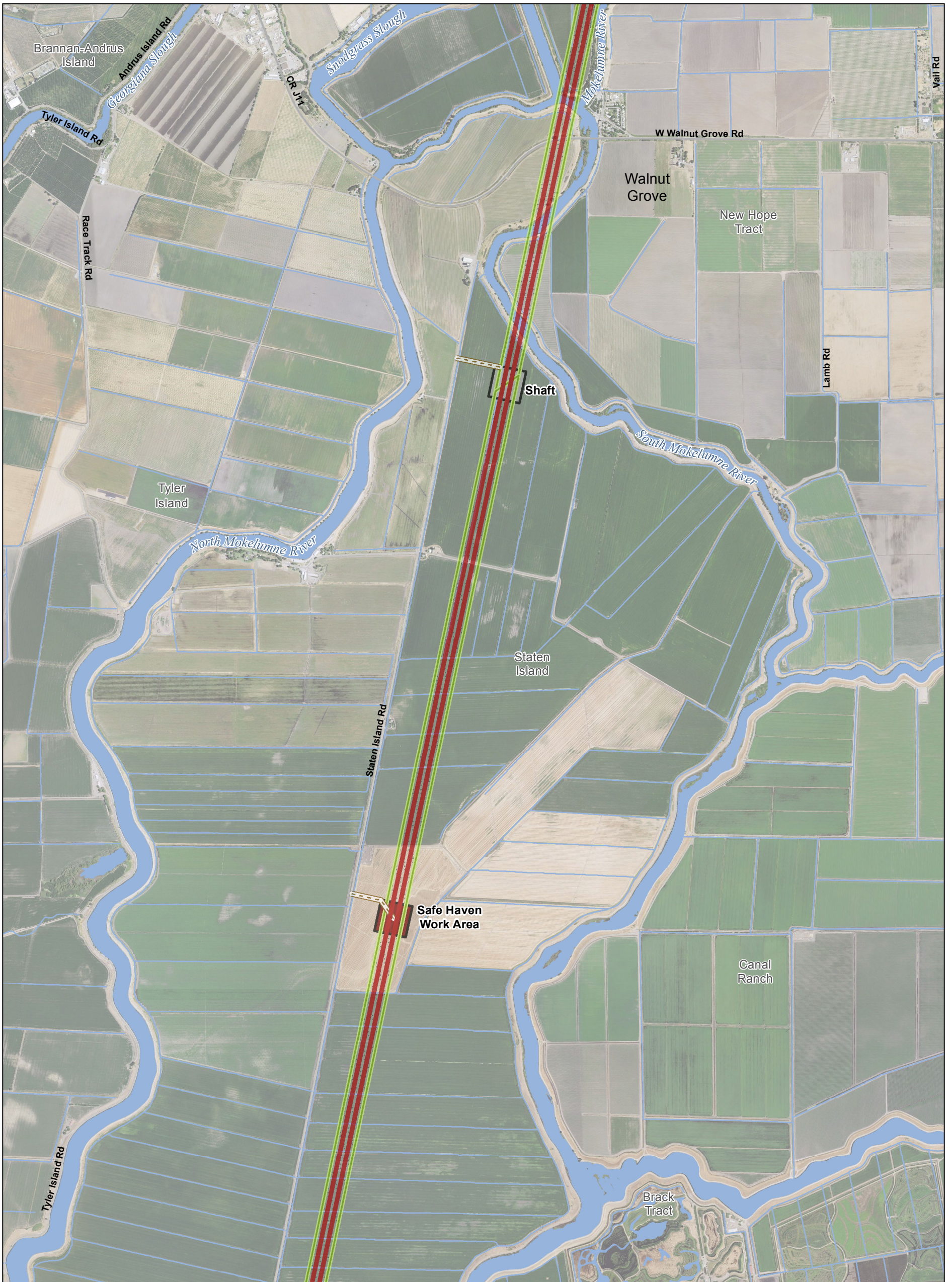
*Surface impacts are not expected to result from subsurface features.
 **In-river features are not a permanent impact to navigation.
 ***Surface impacts will only occur at sites selected for geotechnical explorations.
 See Ch. 3, Section 3.6.1.10 for more information



Sources: Plan Area, SAIC 2010; DWR DHCCP Engineering (rev 5a); NAIP 2014

ADMINISTRATIVE DRAFT
Version Date: 30 Mar 2015

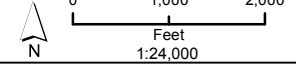
Figure M3-4: Sheet 5 of 15
Modified Pipeline/Tunnel Alignment (Alternative 4)



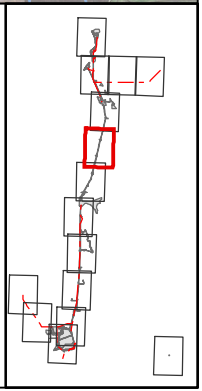
T:\WGI\38\GIS_33_00\GISRequest_11\FIC\FIC098_14\IEREIS_MPTO_Mapbook_Ch3.mxd 2015330

Legend

- | | | | |
|---|-----------------------|-----------------------|--|
| Plan Area | Canal | Dredging | *Proposed Subsurface Easement |
| Areas of Additional Analysis (Outside of Legal Delta; for Power Only) | Operable Barrier | Forebay | **Proposed Permanent Surface Impact |
| Interconnection Point | Permanent Access Road | Forebay Embankment | Proposed Temporary Surface Impact |
| Proposed Permanent OH Transmission Line | Siphon | Forebay Overflow | Proposed Potential Borrow And/Or Spoil |
| Proposed Temporary OH Transmission Line | Temporary Access Road | Intake | Reusable Tunnel Material Area |
| | Tunnel Conveyor | Geotech Planning Area | Barge Unloading Facility |
| | | | Safe Haven Work Area |
| | | | Fuel Station |
| | | | Concrete Batch Plant |



*Surface impacts are not expected to result from subsurface features.
 **In-river features are not a permanent impact to navigation.
 ***Surface impacts will only occur at sites selected for geotechnical explorations.
 See Ch. 3, Section 3.6.1.10 for more information



Sources: Plan Area, SAIC 2010; DWR DHCCP Engineering (rev 5a); NAIP 2014

ADMINISTRATIVE DRAFT
Version Date: 30 Mar 2015

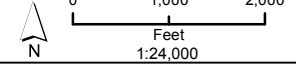
Figure M3-4: Sheet 6 of 15
Modified Pipeline/Tunnel Alignment (Alternative 4)



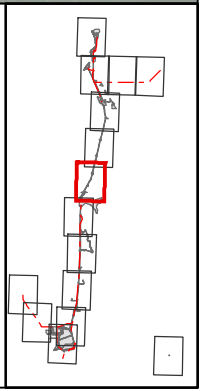
T:\WGI\38\GIS_33_00\GISRequest_11\FIC\FIC098_14\IEREIS_MPTO_Mapbook_Ch3.mxd 2015330

Legend

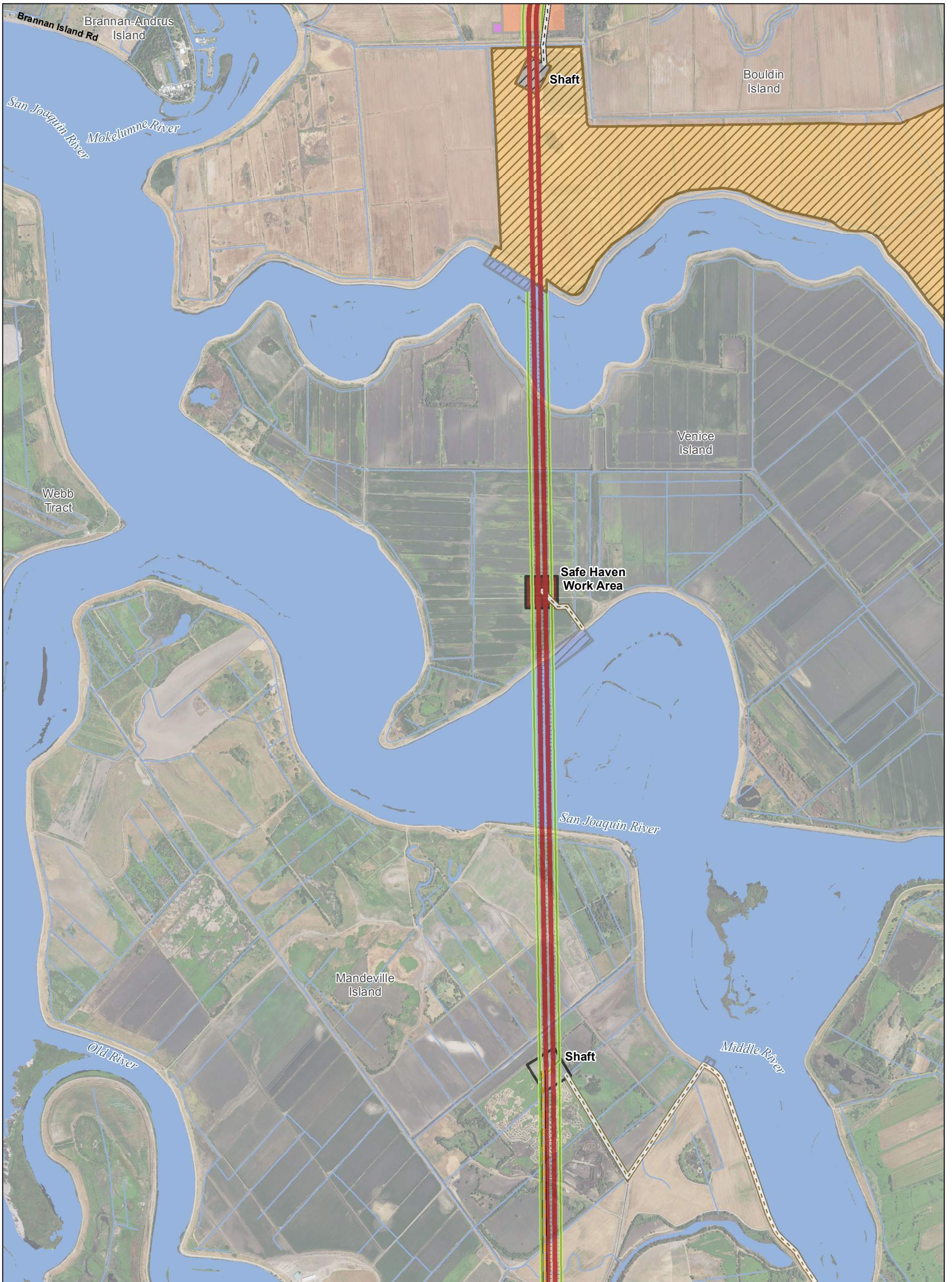
- | | | | |
|--|-----------------------|--------------------------|--|
| Plan Area | Canal | Dredging | *Proposed Subsurface Easement |
| Areas of Additional Analysis
(Outside of Legal Delta; for Power Only) | Operable Barrier | Forebay | **Proposed Permanent Surface Impact |
| Interconnection Point | Permanent Access Road | Forebay Embankment | Proposed Temporary Surface Impact |
| Proposed Permanent OH Transmission Line | Siphon | Forebay Overflow | Proposed Potential Borrow And/Or Spoil |
| Proposed Temporary OH Transmission Line | Temporary Access Road | Intake | Reusable Tunnel Material Area |
| Tunnel | Geotech Planning Area | Barge Unloading Facility | Safe Haven Work Area |
| Tunnel Conveyor | | Fuel Station | Concrete Batch Plant |



*Surface impacts are not expected to result from subsurface features.
 **In-river features are not a permanent impact to navigation.
 ***Surface impacts will only occur at sites selected for geotechnical explorations.
 See Ch. 3, Section 3.6.1.10 for more information



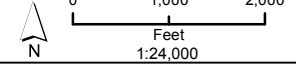
Sources: Plan Area, SAIC 2010; DWR DHCCP Engineering (rev 5a); NAIP 2014



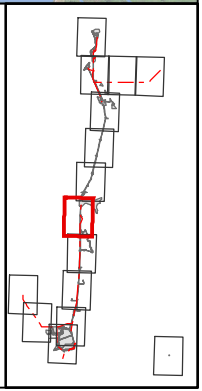
T:\WG\38\GIS_33_00\GISRequest_11\FIC\FIC098_14\IEREIS_MPTO_Mapbook_Ch3.mxd 2015330

Legend

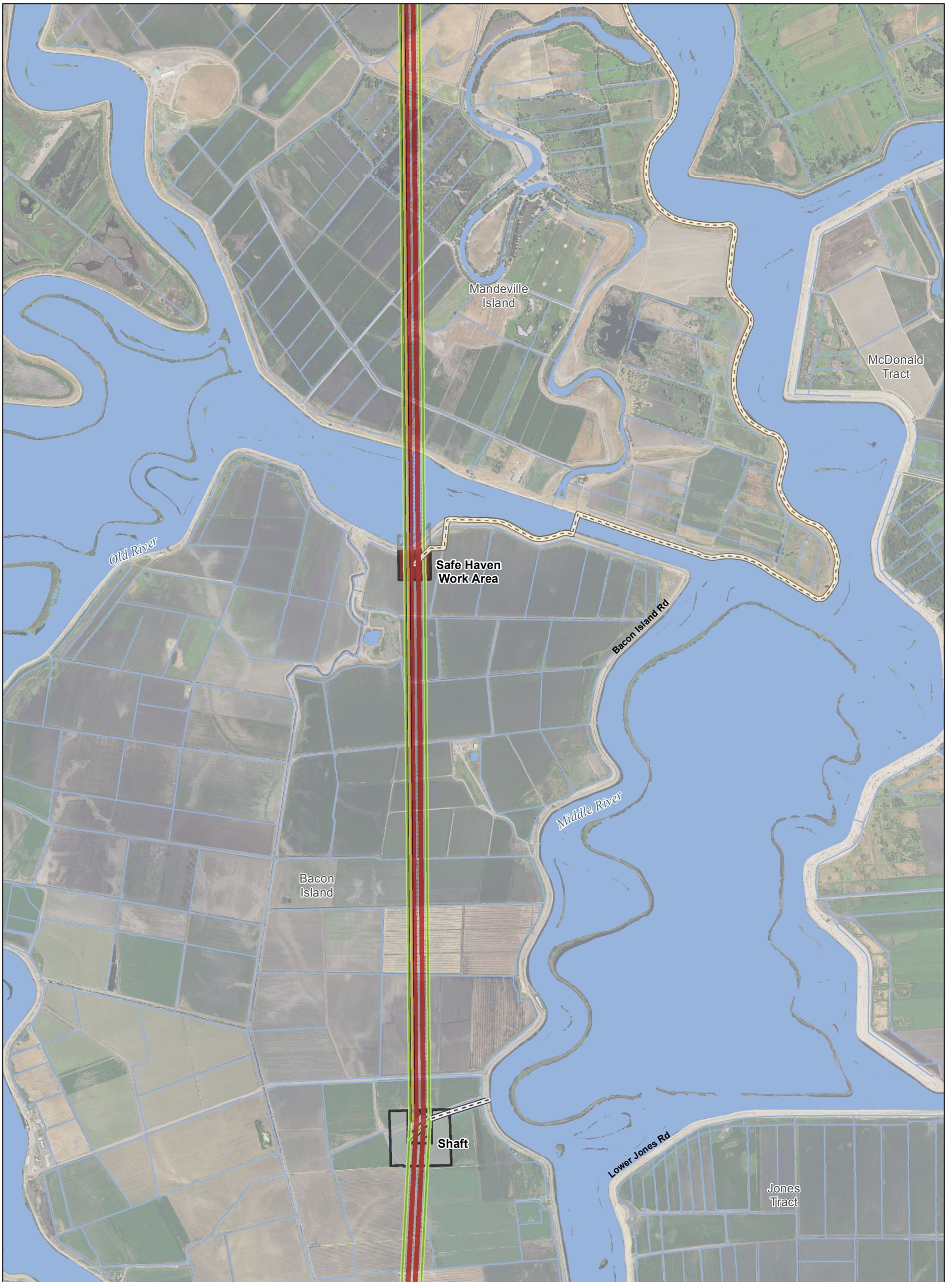
- | | | | |
|--|-----------------------|-----------------------|--|
| Plan Area | Canal | Dredging | *Proposed Subsurface Easement |
| Areas of Additional Analysis
(Outside of Legal Delta; for Power Only) | Operable Barrier | Forebay | **Proposed Permanent Surface Impact |
| Interconnection Point | Permanent Access Road | Forebay Embankment | Proposed Temporary Surface Impact |
| Proposed Permanent OH Transmission Line | Siphon | Forebay Overflow | Proposed Potential Borrow And/Or Spoil |
| Proposed Temporary OH Transmission Line | Temporary Access Road | Intake | Reusable Tunnel Material Area |
| | Tunnel Conveyor | Geotech Planning Area | Barge Unloading Facility |
| | | | Safe Haven Work Area |
| | | | Fuel Station |
| | | | Concrete Batch Plant |



*Surface impacts are not expected to result from subsurface features.
 **In-river features are not a permanent impact to navigation.
 ***Surface impacts will only occur at sites selected for geotechnical explorations.
 See Ch. 3, Section 3.6.1.10 for more information



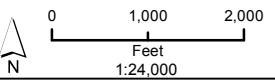
Sources: Plan Area, SAIC 2010; DWR DHCCP Engineering (rev 5a); NAIP 2014



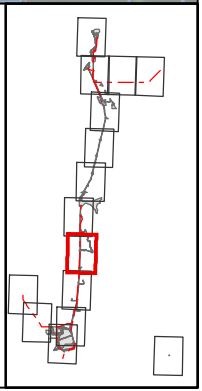
T:\WG\38\GIS_33_00\GISRequest_11\FIC\FIC098_14\EREIS_MPTO_Mapbook_Ch3.mxd 2015330

Legend

- | | | | |
|---|-----------------------|-----------------------|--|
| Plan Area | Canal | Dredging | *Proposed Subsurface Easement |
| Areas of Additional Analysis (Outside of Legal Delta; for Power Only) | Operable Barrier | Forebay | **Proposed Permanent Surface Impact |
| Interconnection Point | Permanent Access Road | Forebay Embankment | Proposed Temporary Surface Impact |
| Proposed Permanent OH Transmission Line | Siphon | Forebay Overflow | Proposed Potential Borrow And/Or Spoil |
| Proposed Temporary OH Transmission Line | Temporary Access Road | Intake | Reusable Tunnel Material Area |
| | Tunnel Conveyor | Geotech Planning Area | Barge Unloading Facility |
| | | | Safe Haven Work Area |
| | | | Fuel Station |
| | | | Concrete Batch Plant |



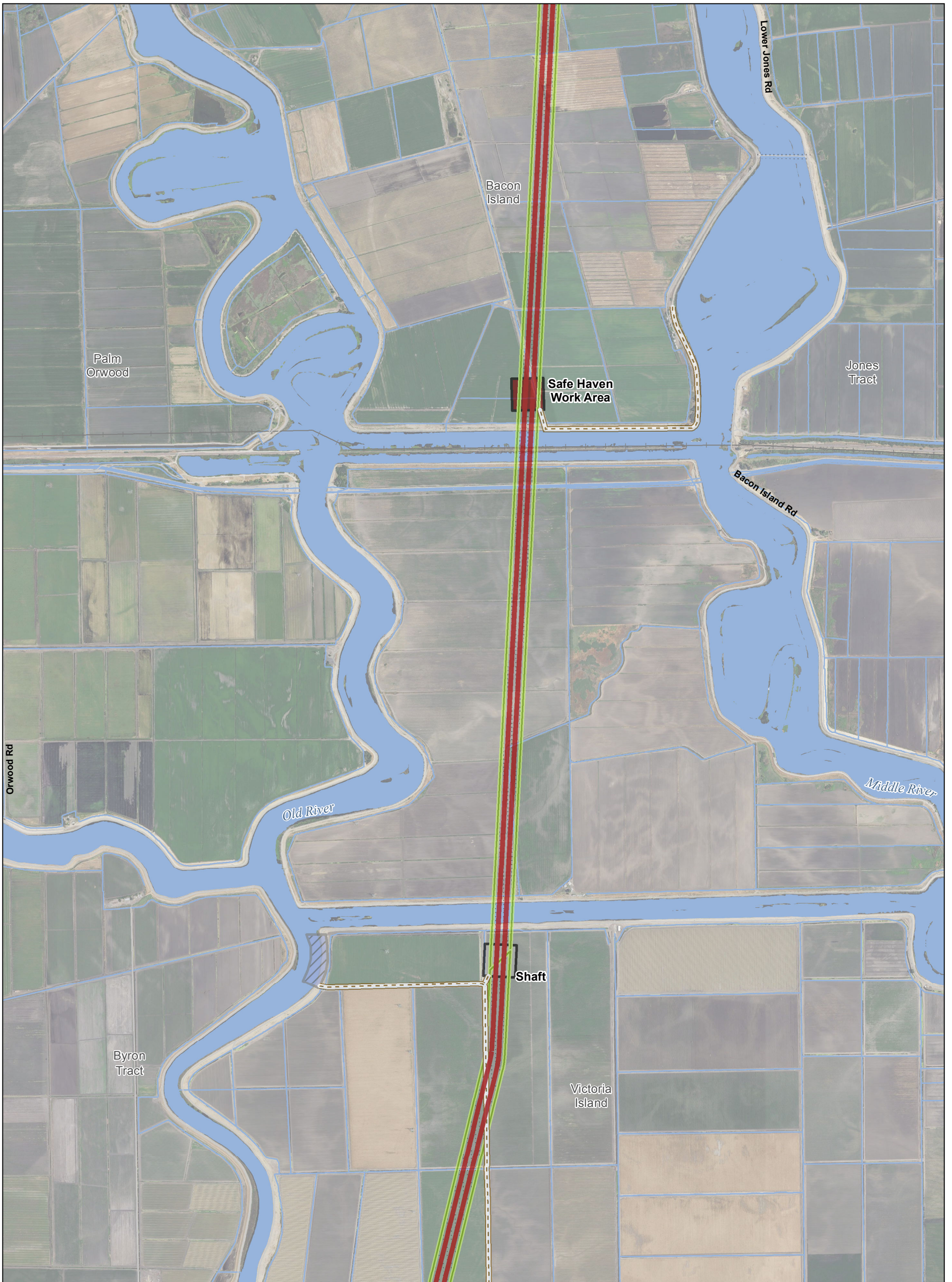
*Surface impacts are not expected to result from subsurface features.
 **In-river features are not a permanent impact to navigation.
 ***Surface impacts will only occur at sites selected for geotechnical explorations.
 See Ch. 3, Section 3.6.1.10 for more information



Sources: Plan Area, SAIC 2010; DWR DHCCP Engineering (rev 5a); NAIP 2014

ADMINISTRATIVE DRAFT
Version Date: 30 Mar 2015

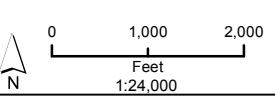
Figure M3-4: Sheet 9 of 15
Modified Pipeline/Tunnel Alignment (Alternative 4)



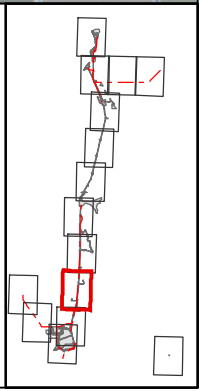
T:\WG\38\GIS_33_00\GISRequest_11\FIC\FIC098_14\IEREIS_MPTO_Mapbook_Ch3.mxd 2015330

Legend

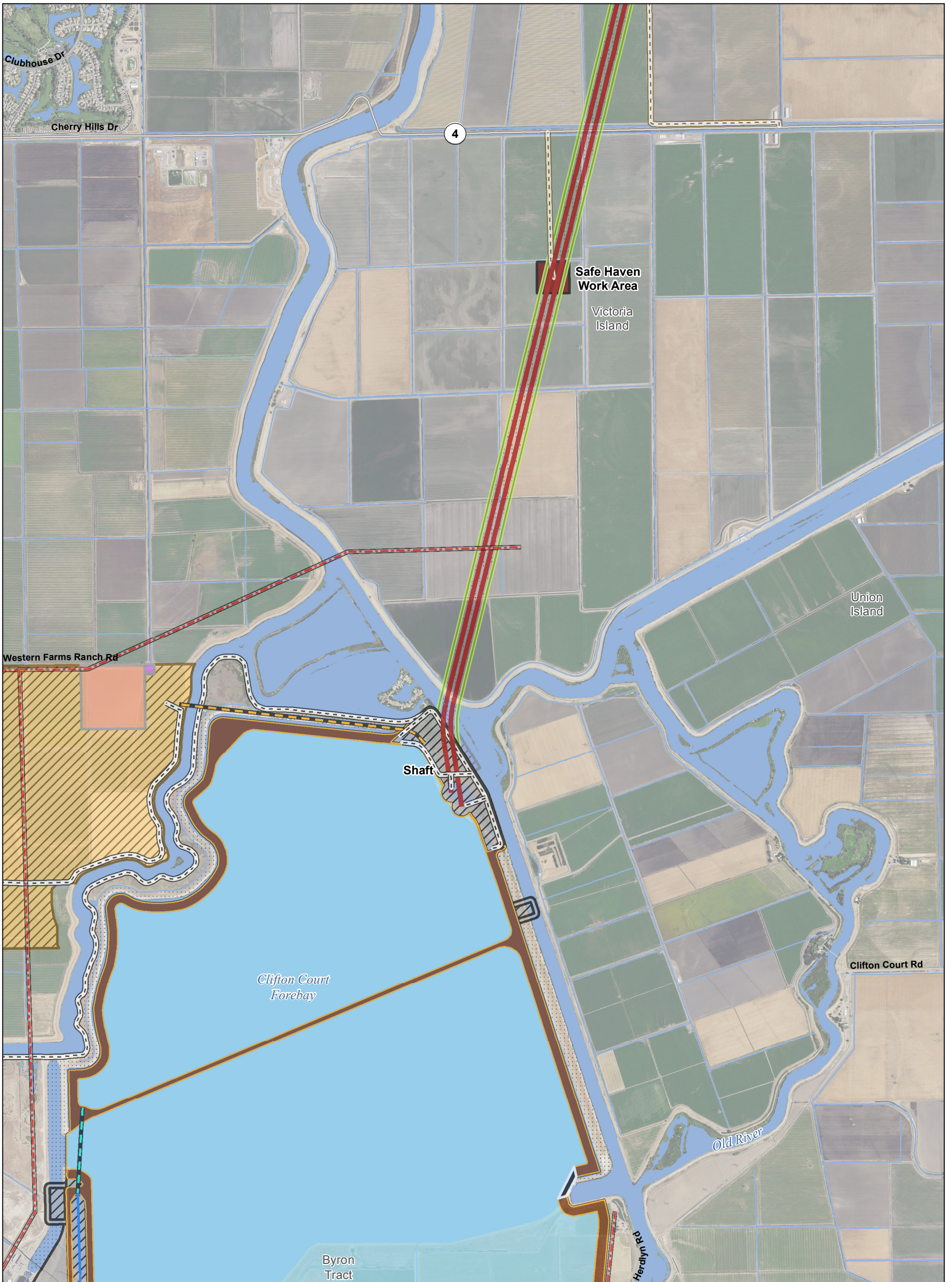
- | | | | |
|--|-----------------------|--------------------------|--|
| Plan Area | Canal | Dredging | *Proposed Subsurface Easement |
| Areas of Additional Analysis
(Outside of Legal Delta; for Power Only) | Operable Barrier | Forebay | **Proposed Permanent Surface Impact |
| Interconnection Point | Permanent Access Road | Forebay Embankment | Proposed Temporary Surface Impact |
| Proposed Permanent OH Transmission Line | Siphon | Forebay Overflow | Proposed Potential Borrow And/Or Spoil |
| Proposed Temporary OH Transmission Line | Temporary Access Road | Intake | Reusable Tunnel Material Area |
| Tunnel | Geotech Planning Area | Barge Unloading Facility | Safe Haven Work Area |
| Tunnel Conveyor | | Fuel Station | Concrete Batch Plant |



*Surface impacts are not expected to result from subsurface features.
 **In-river features are not a permanent impact to navigation.
 ***Surface impacts will only occur at sites selected for geotechnical explorations.
 See Ch. 3, Section 3.6.1.10 for more information



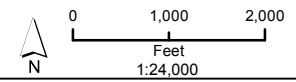
Sources: Plan Area, SAIC 2010; DWR DHCCP Engineering (rev 5a); NAIP 2014



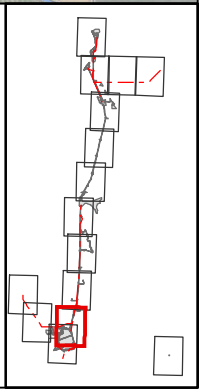
T:\WG\38\GIS_33_00\GISRequest_11\FIC\FIC098_14\IEIREIS_MPTO_Mapbook_Ch3.mxd 2015330

Legend

- | | | | |
|--|-----------------------|-----------------------|--|
| Plan Area | Canal | Dredging | *Proposed Subsurface Easement |
| Areas of Additional Analysis
(Outside of Legal Delta; for Power Only) | Operable Barrier | Forebay | **Proposed Permanent Surface Impact |
| Interconnection Point | Permanent Access Road | Forebay Embankment | Proposed Temporary Surface Impact |
| Proposed Permanent OH Transmission Line | Siphon | Forebay Overflow | Proposed Potential Borrow And/Or Spoil |
| Proposed Temporary OH Transmission Line | Temporary Access Road | Intake | Reusable Tunnel Material Area |
| | Tunnel | Geotech Planning Area | Barge Unloading Facility |
| | Tunnel Conveyor | | Safe Haven Work Area |
| | | | Fuel Station |
| | | | Concrete Batch Plant |



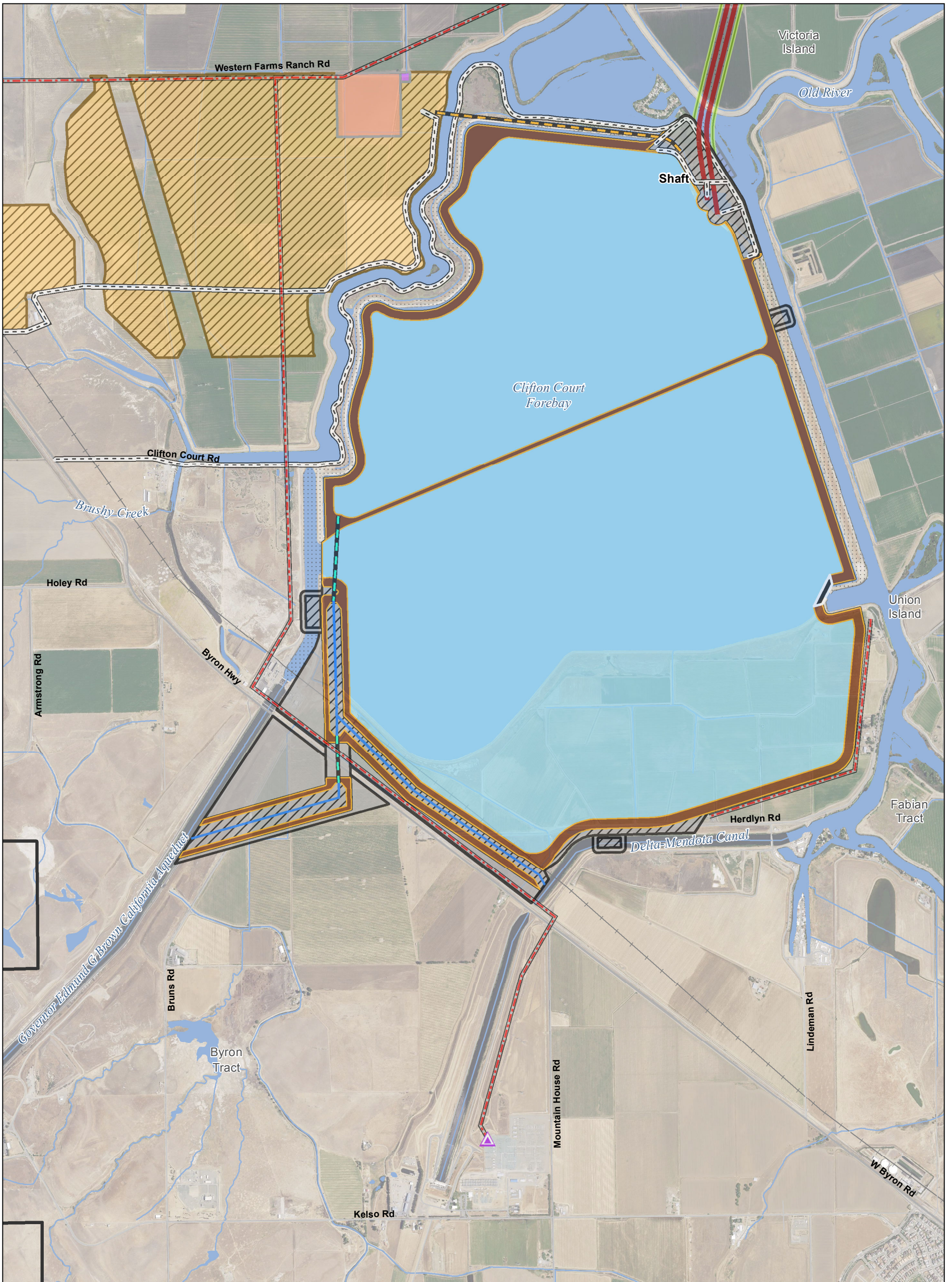
*Surface impacts are not expected to result from subsurface features.
 **In-river features are not a permanent impact to navigation.
 ***Surface impacts will only occur at sites selected for geotechnical explorations.
 See Ch. 3, Section 3.6.1.10 for more information



Sources: Plan Area, SAIC 2010; DWR DHCCP Engineering (rev 5a); NAIP 2014

ADMINISTRATIVE DRAFT
Version Date: 30 Mar 2015

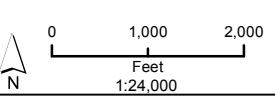
Figure M3-4: Sheet 11 of 15
Modified Pipeline/Tunnel Alignment (Alternative 4)



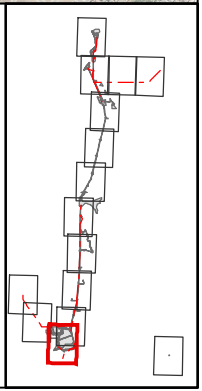
T:\WGI\38\GIS_33_00\GISRequest_11\FIC\FIC098_14\IEREIS_MPTO_Mapbook_Ch3.mxd 2015330

Legend

- | | | | |
|--|-----------------------|-----------------------|--|
| Plan Area | Canal | Dredging | *Proposed Subsurface Easement |
| Areas of Additional Analysis
(Outside of Legal Delta; for Power Only) | Operable Barrier | Forebay | **Proposed Permanent Surface Impact |
| Interconnection Point | Permanent Access Road | Forebay Embankment | Proposed Temporary Surface Impact |
| Proposed Permanent OH Transmission Line | Siphon | Forebay Overflow | Proposed Potential Borrow And/Or Spoil |
| Proposed Temporary OH Transmission Line | Temporary Access Road | Intake | Reusable Tunnel Material Area |
| | Tunnel | Geotech Planning Area | Barge Unloading Facility |
| | Tunnel Conveyor | | Safe Haven Work Area |
| | | | Fuel Station |
| | | | Concrete Batch Plant |



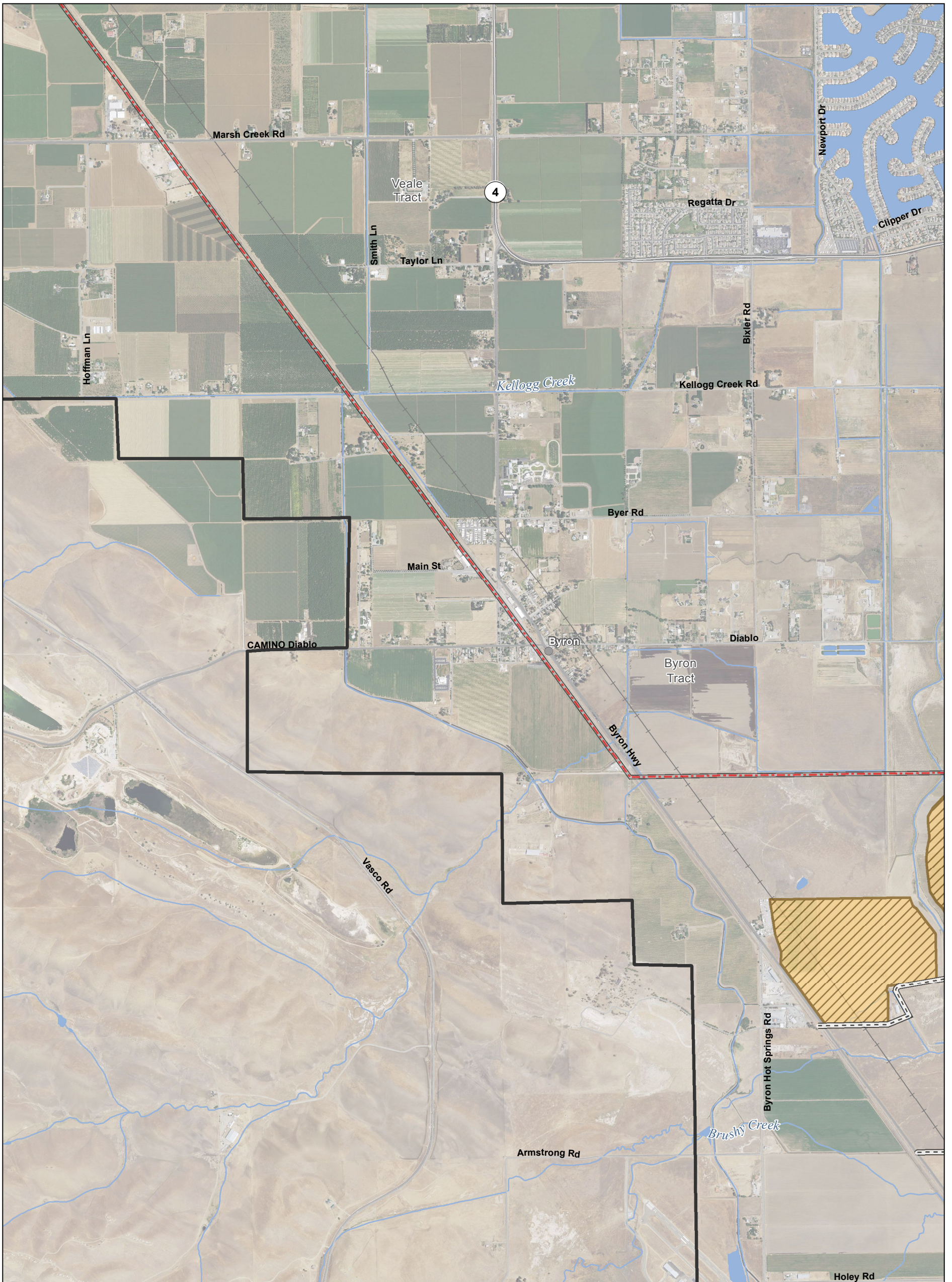
*Surface impacts are not expected to result from subsurface features.
 **In-river features are not a permanent impact to navigation.
 ***Surface impacts will only occur at sites selected for geotechnical explorations.
 See Ch. 3, Section 3.6.1.10 for more information



Sources: Plan Area, SAIC 2010; DWR DHCCP Engineering (rev 5a); NAIP 2014

ADMINISTRATIVE DRAFT
Version Date: 30 Mar 2015

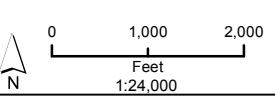
Figure M3-4: Sheet 12 of 15
Modified Pipeline/Tunnel Alignment (Alternative 4)



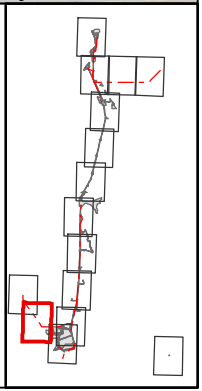
T:\WGI\38\GIS_33_00\GISRequest_11\FIC\FIC098_14\IEIREIS_MPTO_Mapbook_Ch3.mxd 2015330

Legend

- | | | | |
|--|-----------------------|--------------------|--|
| Plan Area | Canal | Dredging | *Proposed Subsurface Easement |
| Areas of Additional Analysis
(Outside of Legal Delta; for Power Only) | Operable Barrier | Forebay | **Proposed Permanent Surface Impact |
| Interconnection Point | Permanent Access Road | Forebay Embankment | Proposed Temporary Surface Impact |
| Proposed Permanent OH Transmission Line | Siphon | Forebay Overflow | Proposed Potential Borrow And/Or Spoil |
| Proposed Temporary OH Transmission Line | Temporary Access Road | Intake | Reusable Tunnel Material Area |
| | Geotech Planning Area | Tunnel | Barge Unloading Facility |
| | | Tunnel Conveyor | Safe Haven Work Area |
| | | | Fuel Station |
| | | | Concrete Batch Plant |



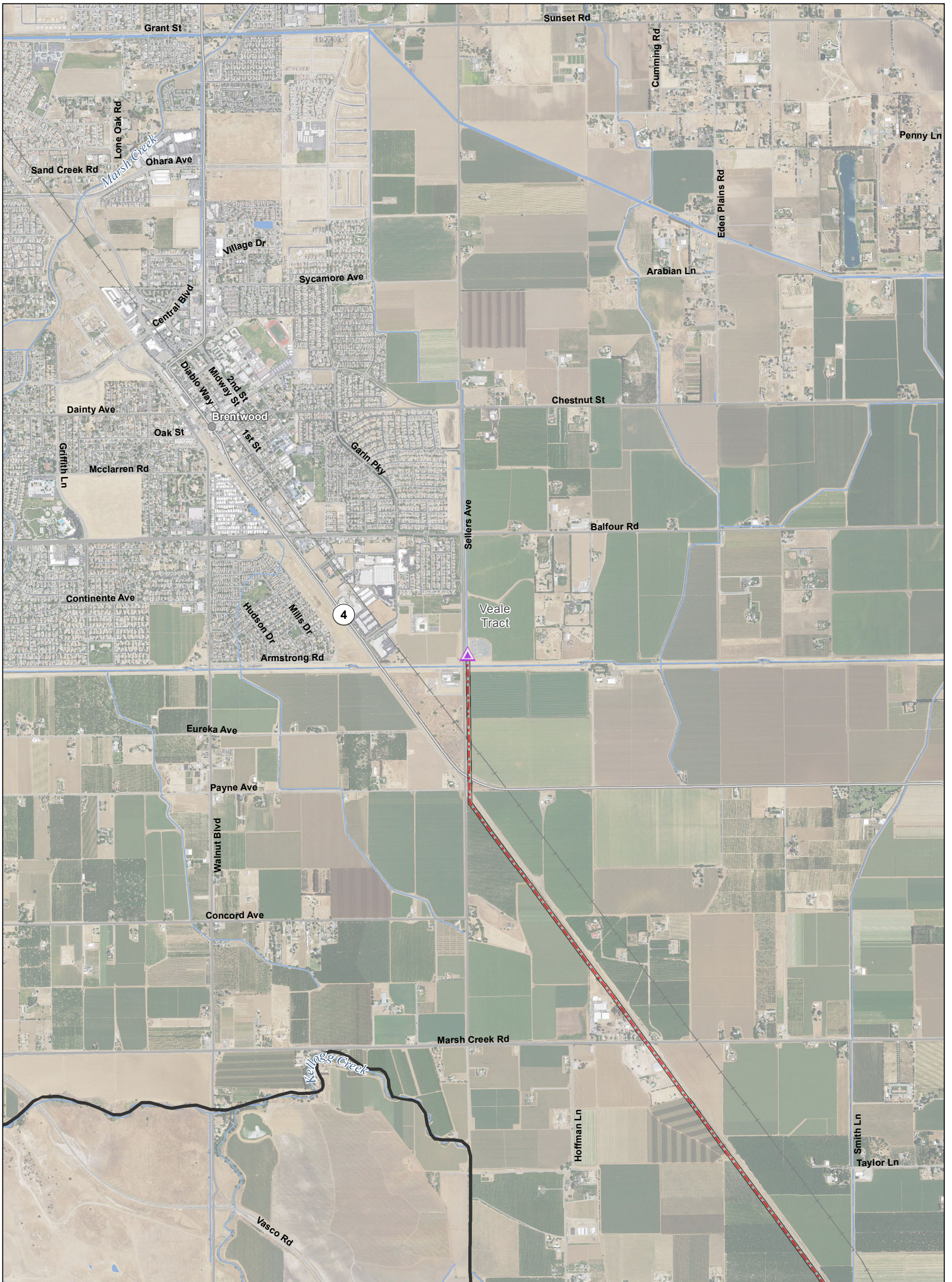
*Surface impacts are not expected to result from subsurface features.
 **In-river features are not a permanent impact to navigation.
 ***Surface impacts will only occur at sites selected for geotechnical explorations.
 See Ch. 3, Section 3.6.1.10 for more information



Sources: Plan Area, SAIC 2010; DWR DHCCP Engineering (rev 5a); NAIP 2014

ADMINISTRATIVE DRAFT
Version Date: 30 Mar 2015

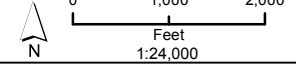
Figure M3-4: Sheet 13 of 15
Modified Pipeline/Tunnel Alignment (Alternative 4)



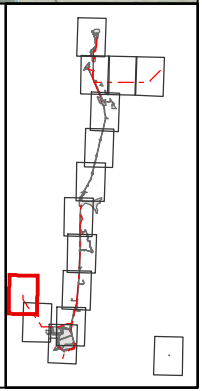
T:\WG\38\GIS_33_00\GISRequest_11\FIC\FIC098_14\IEREIS_MPTO_Mapbook_Ch3.mxd 2015330

Legend

- | | | | |
|--|-----------------------|-----------------------|--|
| Plan Area | Canal | Dredging | *Proposed Subsurface Easement |
| Areas of Additional Analysis
(Outside of Legal Delta; for Power Only) | Operable Barrier | Forebay | **Proposed Permanent Surface Impact |
| Interconnection Point | Permanent Access Road | Forebay Embankment | Proposed Temporary Surface Impact |
| Proposed Permanent OH Transmission Line | Siphon | Forebay Overflow | Proposed Potential Borrow And/Or Spoil |
| Proposed Temporary OH Transmission Line | Temporary Access Road | Intake | Reusable Tunnel Material Area |
| | Tunnel | Geotech Planning Area | Barge Unloading Facility |
| | Tunnel Conveyor | | Safe Haven Work Area |
| | | | Fuel Station |
| | | | Concrete Batch Plant |



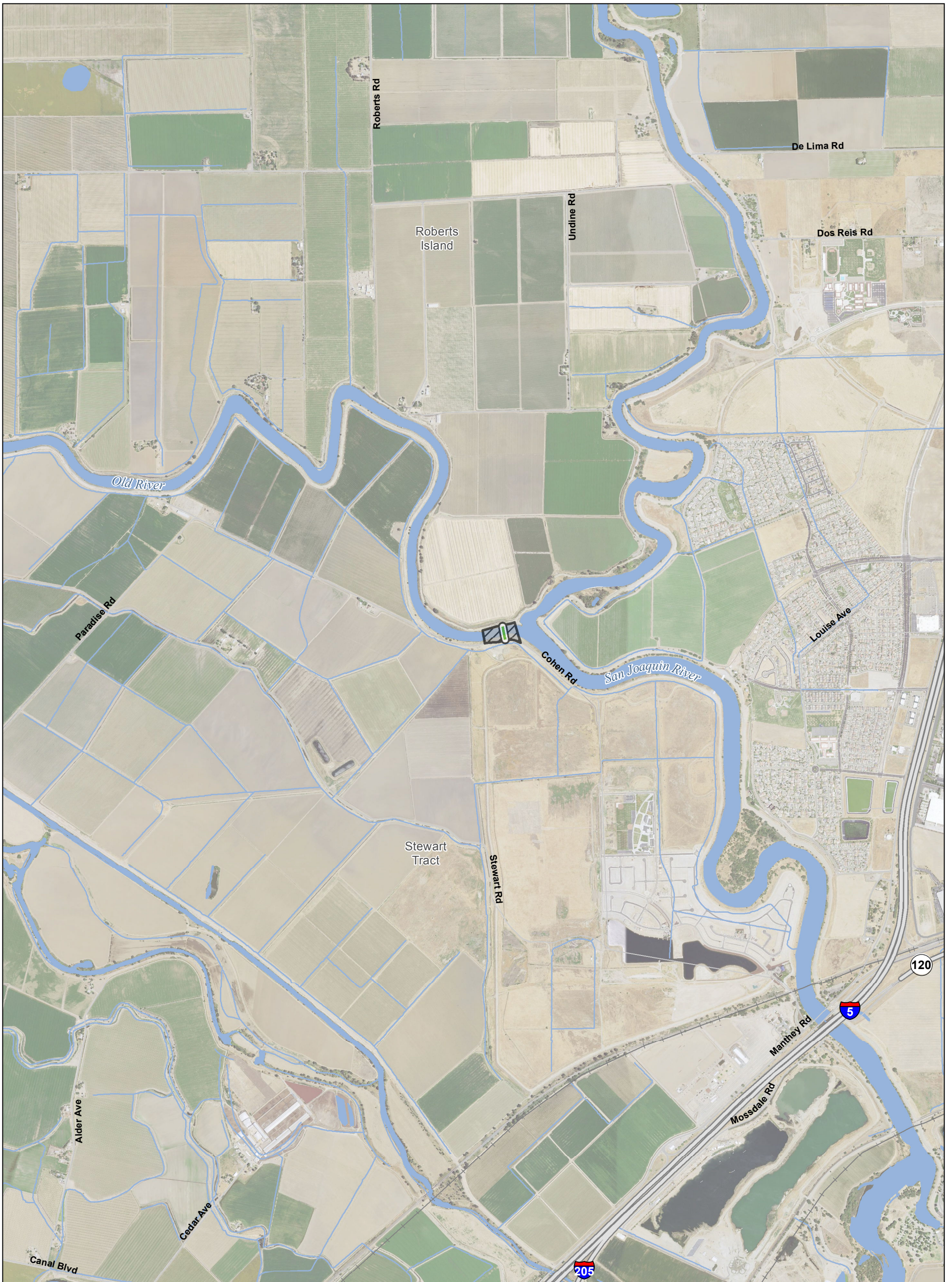
*Surface impacts are not expected to result from subsurface features.
 **In-river features are not a permanent impact to navigation.
 ***Surface impacts will only occur at sites selected for geotechnical explorations.
 See Ch. 3, Section 3.6.1.10 for more information



Sources: Plan Area, SAIC 2010; DWR DHCCP Engineering (rev 5a); NAIP 2014

ADMINISTRATIVE DRAFT
Version Date: 30 Mar 2015

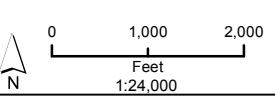
Figure M3-4: Sheet 14 of 15
Modified Pipeline/Tunnel Alignment (Alternative 4)



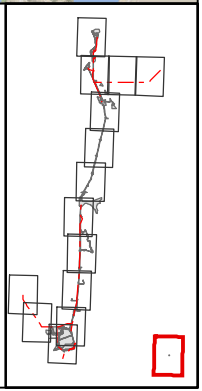
T:\WGI\38\GIS_33_00\GISRequest_11\FIC\FIC098_14\EREIS_MPTO_Mapbook_Ch3.mxd 2015330

Legend

- | | | | |
|--|-----------------------|--------------------------|--|
| Plan Area | Canal | Dredging | *Proposed Subsurface Easement |
| Areas of Additional Analysis
(Outside of Legal Delta; for Power Only) | Operable Barrier | Forebay | **Proposed Permanent Surface Impact |
| Interconnection Point | Permanent Access Road | Forebay Embankment | Proposed Temporary Surface Impact |
| Proposed Permanent OH Transmission Line | Siphon | Forebay Overflow | Proposed Potential Borrow And/Or Spoil |
| Proposed Temporary OH Transmission Line | Temporary Access Road | Intake | Reusable Tunnel Material Area |
| Tunnel | Geotech Planning Area | Barge Unloading Facility | Safe Haven Work Area |
| Tunnel Conveyor | | Fuel Station | Concrete Batch Plant |



*Surface impacts are not expected to result from subsurface features.
 **In-river features are not a permanent impact to navigation.
 ***Surface impacts will only occur at sites selected for geotechnical explorations.
 See Ch. 3, Section 3.6.1.10 for more information



Sources: Plan Area, SAIC 2010; DWR DHCCP Engineering (rev 5a); NAIP 2014

ADMINISTRATIVE DRAFT
Version Date: 30 Mar 2015

Figure M3-4: Sheet 15 of 15
Modified Pipeline/Tunnel Alignment (Alternative 4)