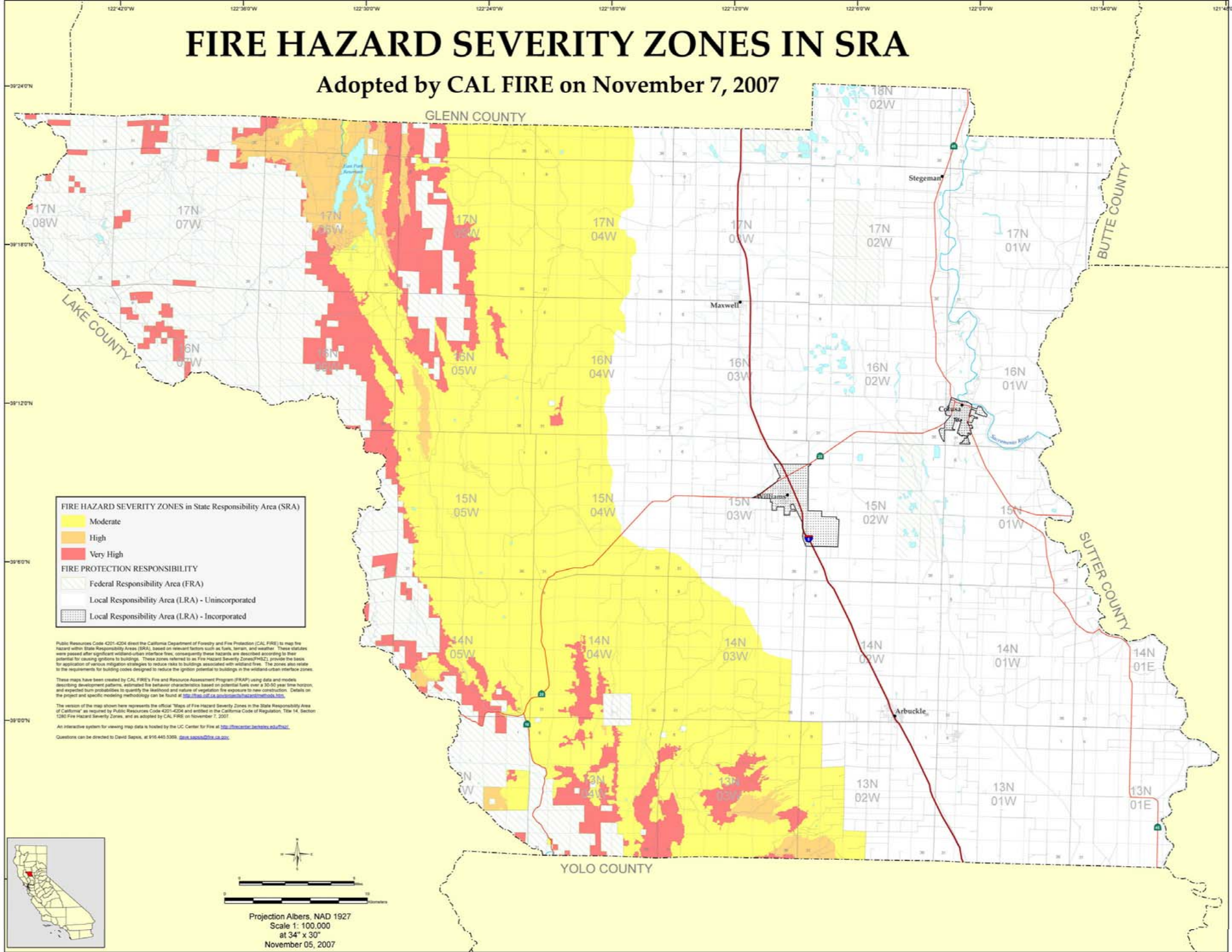


# FIRE HAZARD SEVERITY ZONES IN SRA

Adopted by CAL FIRE on November 7, 2007



**FIRE HAZARD SEVERITY ZONES in State Responsibility Area (SRA)**

- Moderate
- High
- Very High

**FIRE PROTECTION RESPONSIBILITY**

- Federal Responsibility Area (FRA)
- Local Responsibility Area (LRA) - Unincorporated
- Local Responsibility Area (LRA) - Incorporated

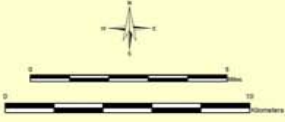
Public Resources Code 4201-4204 direct the California Department of Forestry and Fire Protection (CAL FIRE) to map the hazard within State Responsibility Areas (SRA) based on relevant factors such as fuels, terrain, and weather. These statutes were passed after significant wildland-urban interface fires, consequently these hazards are described according to their potential for causing ignitions to buildings. These zones referred to as Fire Hazard Severity Zones (FHSZ), provide the basis for application of various mitigation strategies to reduce risks to buildings associated with wildland fire. The zones also relate to the requirements for building codes designed to reduce the ignition potential to buildings in the wildland-urban interface zones.

These maps have been created by CAL FIRE's Fire and Resource Assessment Program (FRAP) using data and models describing development patterns, estimated fire behavior characteristics based on potential fuels over a 30-50 year time horizon, and expected burn probabilities to quantify the likelihood and nature of vegetation fire exposure to new construction. Details on the project and specific modeling methodology can be found at <http://www.fire.ca.gov/programs/hazard/mapping.html>.

The version of the map shown here represents the official "Maps of Fire Hazard Severity Zones in the State Responsibility Area of California" as required by Public Resources Code 4201-4204 and entitled in the California Code of Regulation, Title 14, Section 1285 Fire Hazard Severity Zones, and as adopted by CAL FIRE on November 7, 2007.

An interactive system for viewing map data is hosted by the UC Center for Fire at <http://firecenter.berkeley.edu/ucf>.

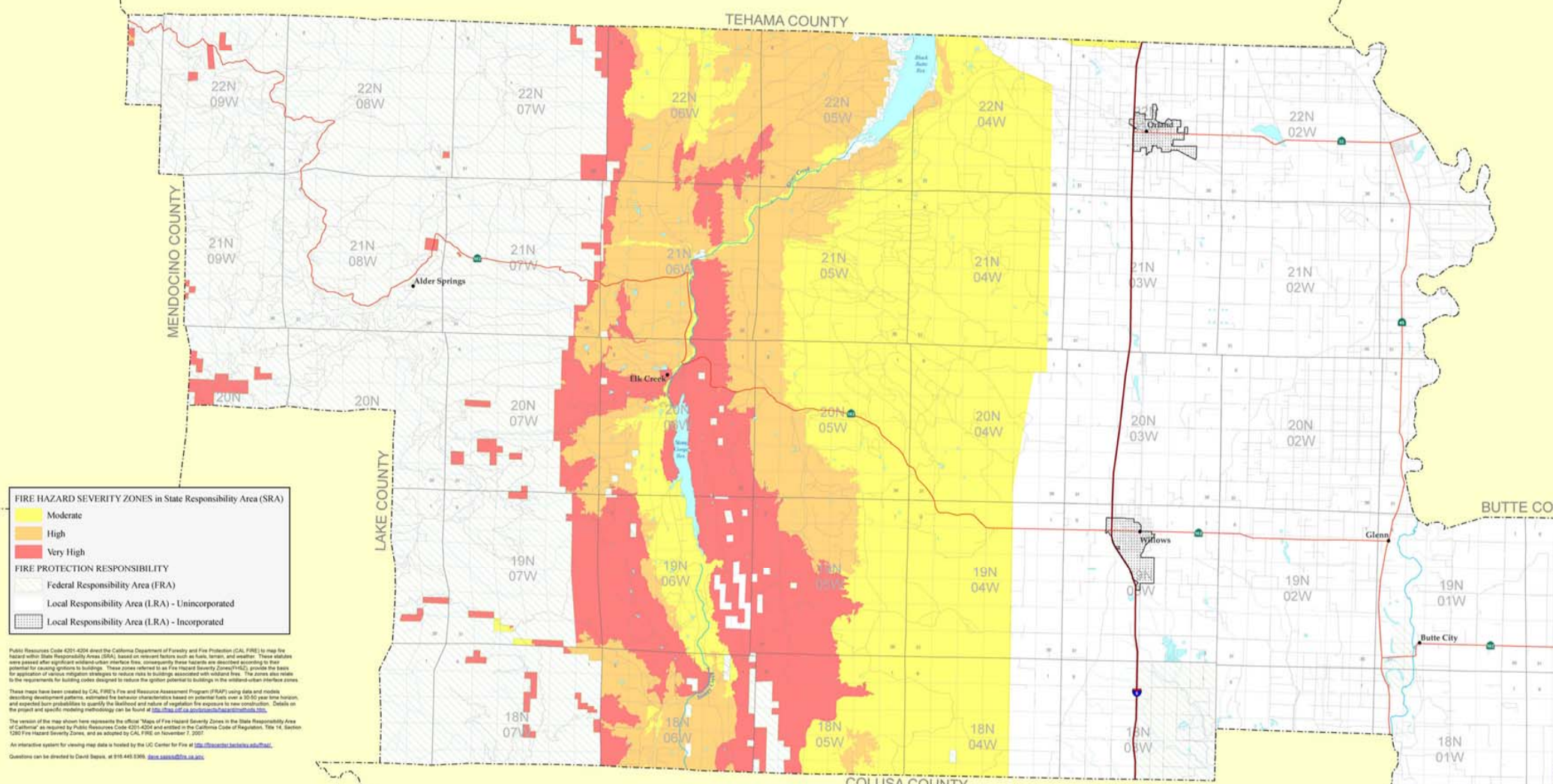
Questions can be directed to David Sappal, at 916.445.5309, [dave.sappal@fire.ca.gov](mailto:dave.sappal@fire.ca.gov).



Projection Albers, NAD 1927  
 Scale 1: 100,000  
 at 34" x 30"  
 November 05, 2007

# FIRE HAZARD SEVERITY ZONES IN SRA

Adopted by CAL FIRE on November 7, 2007



**FIRE HAZARD SEVERITY ZONES in State Responsibility Area (SRA)**

- Moderate
- High
- Very High

**FIRE PROTECTION RESPONSIBILITY**

- Federal Responsibility Area (FRA)
- Local Responsibility Area (LRA) - Unincorporated
- Local Responsibility Area (LRA) - Incorporated

Public Resources Code 4301-4304 direct the California Department of Forestry and Fire Protection (CAL FIRE) to map the hazard within State Responsibility Areas (SRAs) based on relevant factors such as fuels, terrain, and weather. These studies were prepared after significant wildfire urban interface fires, consequently these hazards are described according to their potential for causing ignition to buildings. These zones referred to as Fire Hazard Severity Zones (FHSZ) provide the basis for application of various mitigation strategies to reduce risk to buildings, associated with wildfire fire. The zones also relate to the requirements for building codes designed to reduce the ignition potential to buildings in the wildfire urban interface zones.

These maps have been created by CAL FIRE's Fire and Resource Assessment Program (FRAP) using data and models describing development patterns, estimated fire behavior characteristics based on potential fuels over a 30-50 year time horizon, and expected burn probabilities to quantify the likelihood and nature of vegetation fire exposure to new construction. Details on the project and specific modeling methodology can be found at <http://www.fire.ca.gov/arcgis/arcgis.htm>.

The version of the map shown here represents the official "Maps of Fire Hazard Severity Zones in the State Responsibility Area of California" as required by Public Resources Code 4301-4304 and entitled in the California Code of Regulations, Title 14, Section 1280 Fire Hazard Severity Zones, and as adopted by CAL FIRE on November 7, 2007.

An interactive system for viewing map data is hosted by the UC Center for Fire at <http://www.firecenter.ucdavis.edu/>.

Questions can be directed to David Sappas, at 916-445-8398, [david.sappas@fire.ca.gov](mailto:david.sappas@fire.ca.gov).

Projection Albers, NAD 1927  
 Scale 1:100,000  
 at 42° x 30"  
 November 06, 2007