



## NOTICE OF PREPARATION

### El Dorado Water & Power Authority

### Supplemental Water Rights Project

**To:** Office of Planning and Research, State Clearinghouse; State and Local Responsible and Trustee Agencies; Federal Agencies; Interested Parties and Organizations (see attached Distribution List)

**From:** El Dorado Water & Power Authority  
3932 Ponderosa Road, Suite 200  
Shingle Springs, California 95682  
Phone: (530) 621-5392  
Fax: (530) 672-6721

**Contact:** Tracey Eden-Bishop, P.E., Water Resources Engineer  
El Dorado Water & Power Authority

**Date:** October 24, 2008

**Subject:** **Notice of Preparation of an Environmental Impact Report, Supplemental Water Rights Project**

---

#### Purpose of Notice:

The El Dorado Water & Power Authority (EDWPA) is the Lead Agency for its Supplemental Water Rights Project located in El Dorado County, California, and is preparing an Environmental Impact Report (EIR) pursuant to §15082 of the California Environmental Quality Act (CEQA) Guidelines.

This Notice of Preparation (NOP) serves to notify all Responsible Agencies, Trustee Agencies, and involved federal agencies that EDWPA, as Lead Agency, plans to prepare an EIR for the proposed project. The purpose of the notice is to solicit guidance and input from those agencies and interested parties as to the scope and content of the environmental information to be included in the EIR. It is intended to provide agencies with sufficient information describing the proposed project and its potential environmental effects in order to allow these agencies to offer meaningful responses related to the scope and content of the EIR.

Agency responses should indicate whether the agency will be a Responsible or Trustee agency for the project, and should focus on the agency's area of statutory responsibility,

including specific details identifying any significant environmental issues and mitigation measures the Lead Agency will need to have explored in the EIR.

The attached Initial Study and Environmental Checklist provides a more detailed project description, relevant project background information, project location map, discussion of the environmental effects to be examined in detail in the EIR, including the proposed methods of analysis, and identifies potential environmental effects dismissed from further analysis. Content requirements of this NOP are consistent with those set forth under §15082(a)(1)).

**Project Title:**

Supplemental Water Rights Project

**Project Location:**

The project is located within several environs in El Dorado County, California. As a water rights project the project involves multiple water bodies including several reservoirs and watercourses within the upper American River basin. These are part of the Upper American River Project (UARP) owned and operated by the Sacramento Municipal Utility District (SMUD) and include Union Valley Reservoir, Ice House Reservoir, Loon Lake Reservoir, Gerle Creek at Loon Lake Reservoir, Gerle Creek at Gerle Creek Reservoir, Rubicon River and Rubicon Reservoir, Little Rubicon River at Buck Island Reservoir, South Fork Rubicon River at Robbs Peak Reservoir, and Silver Creek at Camino Reservoir. The project also includes parts of the South Fork of the American River, White Rock Powerhouse Penstock, and Folsom Reservoir. See Attached Project Area Map.

The water sought under this application and petitions is intended to be put to beneficial use within the service areas of the El Dorado Irrigation District (EID) and Georgetown Divide Public Utility District (GDPUD), currently covering 137,000 acres and 75,000 acres, respectively, within western and central El Dorado County (212,000 acres in Townships 8 to 11 North inclusive, Ranges 8 to 13 East inclusive, M.D.B & M.). Water is also intended to be used within certain areas in close proximity to these existing service area boundaries, and/or where facilities exist, or where the planned land use allows for higher density development than currently exists on the ground. This latter category represents, in part, areas where future development may be provided water service by either EID, GDPUD or others (known and referred to as “favorable areas” in the El Dorado County Water Agency 2007 Water Resources Development and Management Plan, which identifies water resources required to meet water needs envisioned by the 2004 El Dorado County General Plan).

**Project Lead Agency:**

El Dorado Water & Power Authority  
3932 Ponderosa Road, Suite 200  
Shingle Springs, California 95682

## **Project Description:**

### **Project Objective**

The proposed project is to establish permitted water rights allowing diversion of water from the American River basin to meet planned future water demands in the EID and GDPUD service areas and other areas located within El Dorado County that are outside of these service areas. EDWPA will be filing with the State Water Resources Control Board, Division of Water Rights, petitions for partial assignment of each of State Filed Applications 5644 and 5645, and accompanying applications allowing for the total withdrawal for use of 40,000 AFA, consistent with the diversion and storage locations allowed it under the El Dorado-SMUD Cooperation Agreement.

### **Project Need**

Local water purveyors have a continuing obligation to exert reasonable effort to augment their available water supply in order to meet the demand in their service areas as embodied in adopted general plans. Accordingly, EDWPA, EID and GDPUD have a continuing obligation to exert reasonable efforts to augment available water supply to meet increasing demands from population growth and development approved by other governmental entities (e.g., El Dorado County) that have the power to make land use decisions.

### **Project Operation**

Two points of withdrawal for use are proposed. The White Rock Powerhouse Penstock which was first licensed in 1957 and is owned and operated by the Sacramento Municipal Utility District (SMUD) and Folsom Reservoir (operated by the U.S. Bureau of Reclamation) at or near the existing EID Folsom Reservoir pumping facilities. GDPUD, as discussed below, has no direct diversion facilities on the South Fork American River or Folsom Reservoir and, accordingly would rely on an exchange with an upstream purveyor. Water available for withdrawal at White Rock Powerhouse Penstock and Folsom Reservoir under the proposed project will be consistent with the operational conditions set forth in the UARP Federal Energy Regulatory Commission (FERC) license conditions. So long as the UARP is operating as a hydroelectric project, the availability of any portion of the 40,000 AFA depends on any combination of the following sources of water:

- a) Water not originating from storage but used for meeting UARP FERC License required minimum flows below Slab Creek Reservoir;
- b) Water not originating from storage but directly diverted for power production at UARP facilities and to meet EDWPA delivery requirements; and
- c) Water released from storage in Loon Lake, Union Valley, and Ice House Reservoirs for power production or meeting instream flows or to meet EDWPA delivery requirements.

EID would take its diversion either at the turnout from the White Rock Penstock or at, or near, its current intake facility on Folsom Reservoir. GDPUD, with no current diversion structure on Folsom Reservoir, would plan to enter into an exchange agreement with an upstream water right holder (Placer County Water Agency, for example) and take its diversion of water at the existing American River Pump Station. In turn, the exchanging

agency would divert water from Folsom Reservoir at the existing urban water supply intake at Folsom Dam. Under the Placer County Water Agency (PCWA) example, Middle Fork Project (MFP) water rights, held by PCWA would be exchanged for a negotiated portion of this current newly acquired water right from GDPUD. Such an exchange would require a subsequent SWRCB action as a petition for change in Place of Use would need to be filed by PCWA to authorize MFP use within El Dorado County.

No new facilities are being proposed as part of this project.

### **Potential Environmental Effects**

Upon approval, the proposed project will allow for a total take of up to 40,000 AFA of water from the American River basin including Folsom Reservoir. The proposed project is a new water right application/petition. Accordingly, no new facilities are required under this phase of the project. Once the water right permit is obtained, a separate project (or projects) undertaken by EID and/or GDPUD (or possibly others) would, depending on the timing of increasing water demands, proceed forward for independent CEQA and related approvals. To the extent that details regarding these future facilities are known at this time, this EIR will discuss their possible environmental effects; to the extent they are reasonably foreseeable based on reasonably available information.

The potential environmental effects of the current project are primarily hydrological, in that a net depletion of up to 40,000 AFA could affect water-related resources in project area reservoirs and/or watercourses including downstream areas. These impacts include potential effects to water supplies (locally, regionally, and across the CVP/SWP), hydropower generation, fisheries and aquatic resources, riparian resources, water-related recreational activities (e.g., whitewater rafting), water quality, flood control, and water-related cultural resources. While the points of diversions and/or re-division are all contained within the upper American River basin, the overall hydrologic effects may be realized downstream and throughout the Central Valley Project/State Water Project (CVP/SWP). The potential *area of effect* of this project, therefore, includes not only the upper American River basin but also all of the downstream environs that define operational conditions throughout the CVP/SWP, including the San Francisco Bay and Sacramento-San Joaquin River Delta (Bay-Delta).

Hydrologic modeling of the upper basin generally defined as the UARP and sections of the South Fork American River upstream of Folsom Reservoir will determine water availability through the use of numerical computer modeling. EDWPA plans to configure the proposed project to be consistent with the FERC terms and conditions anticipated in the new operating license. It is anticipated that the ResSIM Model, jointly developed by the Department of Fish & Game and U.S. Forest Service as part of SMUD's UARP FERC relicensing process will be utilized although close coordination with SMUD's operational modeling will be established. ResSIM could be used to verify the environmental boundary conditions associated with EDWPA's proposed diversion and provide a means of determining the increment of potential impact to these upstream watercourses, relative to those established in the SMUD UARP FERC relicensing process. The recently completed FERC Relicensing Negotiated Settlement Agreement (with both the FERC Environmental Impact Statement (EIS) and SMUD CEQA Supplement) has established various environmental thresholds (e.g., minimum instream flows) which will be carefully documented.

To the extent that Folsom Reservoir and, thereby, the lower American River could be affected by the project, the potential effects on fisheries habitat (flow) and water temperature on federally listed Chinook salmon (including their critical habitats), steelhead, and green sturgeon critical habitat will be evaluated in addition to those species considered of *management concern* by the Department of Fish & Game. System-wide effects on other CVP/SWP watercourses and resources including the Delta will also be examined. EDWPA is aware of the ongoing developments of water-related resource issues throughout the CVP/SWP (and those affecting Folsom Reservoir and the lower American River) including, but not necessarily limited to the Lower American River Flow Management Standard, Sacramento River Water Reliability Study (SRWRS), Sacramento Area Water Forum Agreement, pending CVP Operating Criteria and Plan (OCAP) Biological Opinions, pending Bay-Delta Water Quality Control Plan update, Folsom Reservoir's Joint Federal Project (FDS/FDR), and the proposed Bay-Delta Conservation Plan (BDCP). The EIR analysis, as it pertains to downstream effects, will carefully consider all of these ongoing technical and regulatory matters.

CALSIM II modeling (with an expanded historic record) and its related water temperature and early life-stage salmon mortality modeling, along with updated, state-of-the-art automated temperature selection criteria and coldwater pool modeling of Folsom Reservoir will provide the necessary hydrologic and environmental data output to assess all relevant water-related resources within the potential area of effect. Reservoir storage, water surface elevations, seasonal instream flows, water temperatures, Delta outflow, X2 position (near bottom 2 part per thousand isohaline), as well as established flow and temperature targets from various Biological Opinions will be assessed. The EIR will also rely on the most up-to-date CALSIM II modeling assumptions (Common Assumptions) accepted by federal and State agencies as well as local/regional water interests.

For effects to hydropower at Folsom Reservoir (a CVP facility) and at CVP load center, the Long-Term GEN Model will be used; this will provide data to evaluate the effects to CVP hydropower generation, capacity, and pumping power at Folsom Reservoir.

The potential effects of future climate change on water availability are important considerations and will also be addressed in the EIR. Additionally, recent legislative mandates will be reviewed (e.g., AB32). The latest research and literature will be summarized, including results from the California Energy Commission's PIER Program, California Climate Change Center, Governor's Climate Action Team, Sierra Nevada Research Institute, and various recent and ongoing studies out of UC Davis, UC Merced, UC Santa Barbara, Oregon State University, and Scripps. No separate General Circulation Model/Regional Circulation Model (GCM/RCM) application through downscaling or applied DEM will be conducted. The current acknowledgement within the scientific community of the scaling constraints, GCM physical meteorological gaps, and the lack of a calibrated platform (e.g., with CALSIM II) to integrate any one of the numerous GCMs available into a local/regional water modeling effort, do not warrant that such an extensive effort be conducted at this time. URBEMIS modeling, however, will be utilized to document increased greenhouse gas (GHG) emissions as part of the cumulative impact assessment on secondary, indirect growth-related effects within the service areas and favorable areas.

Secondary or indirect environmental effects related to the delivery and use of this new water supply within the service areas of EID and GDPUD will be assessed with considerable reliance on the EIR prepared for the recent El Dorado County General Plan Update. This new water supply is intended to meet projected demands within the western slope of El Dorado County and is consistent with the anticipated level of growth and necessary facilities (along with their expected environmental effects) in the project area as set out in the County's General Plan.

**Public Review Period:**

This Notice of Preparation is being circulated for public review and comment commencing on **October 24, 2008**. All written comments will be accepted by the El Dorado Water & Power Authority through **5:00 P.M. on Friday, December 5, 2008**. Comments should be submitted to the attention of Ms. Tracey Eden-Bishop, P.E., Water Resources Engineer, El Dorado Water & Power Authority, at the address listed above.

**Public Scoping Meetings and Workshops**

The El Dorado Water & Power Authority will hold two Public Scoping Meetings and Workshops to allow interested persons, organizations, and agencies to learn more about the project and to provide comments on the scope and content of the EIR. The dates, times and locations of these public scoping meetings are as follows:

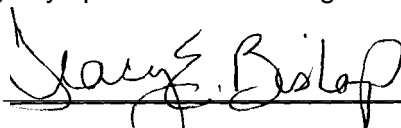
**Wednesday, November 12, 2008**

From 6:30 - 8:30 pm  
Building "C"  
2850 Fair Lane Court  
Placerville, California

**Monday, November 17, 2008**

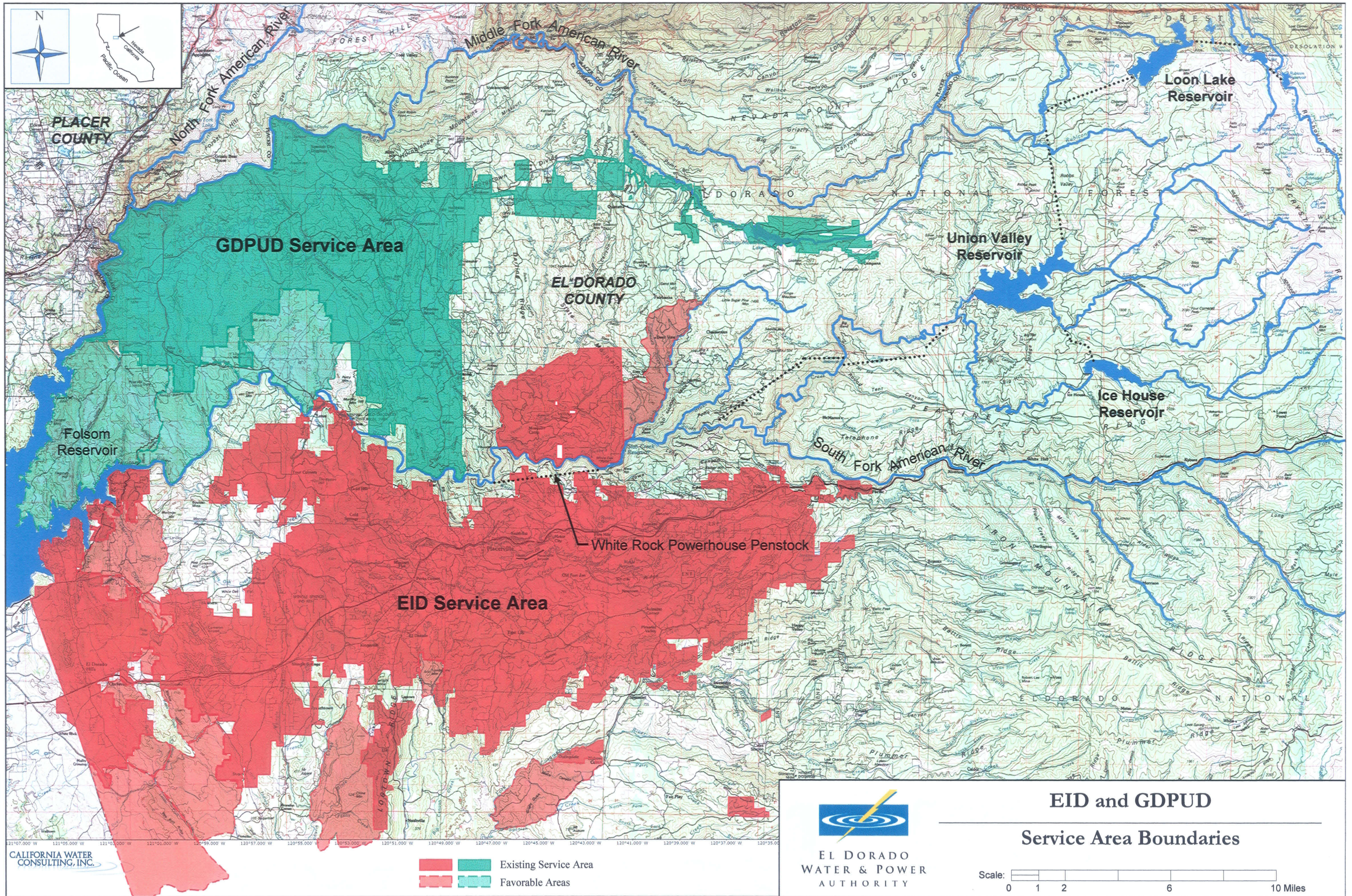
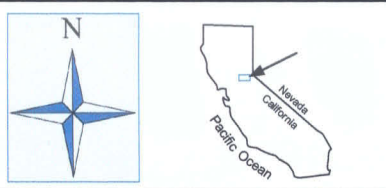
From 6:30 - 8:30 pm  
SMUD Auditorium  
SMUD Headquarters Building  
6201 S Street  
Sacramento, California

The facilities will be accessible to persons with disabilities. Individuals requiring special accommodations are requested to contact Tracey Eden-Bishop (530) 621-5392 at least five working days prior to the meeting.

**Signature:**  **Date:** October 23, 2008

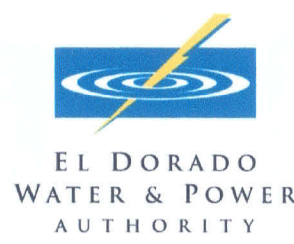
Tracey Eden-Bishop, P.E.  
Water Resources Engineer  
El Dorado Water & Power Authority

Attachment: Project Area Map  
Initial Study and Environmental Checklist



CALIFORNIA WATER CONSULTING, INC.

- Existing Service Area
- Favorable Areas



### EID and GDPUD Service Area Boundaries



# Notice of Preparation El Dorado Water & Power Authority Supplemental Water Rights Project – Distribution List

## ORGANIZATIONS

Alpine County -- Planning Department	California Farm Water Coalition
Amador County -- Office of County Clerk	California Native Plant Society
Amador County Counsel	California Outdoors
Amador County Department of Water Resources	California Sport fishing Protection Association
Amador County Planning Department	California State Water Contractors Association
Amador Water Agency	California Trout Unlimited
American River Authority	California Waterfowl Association
American River Coalition	Camp Lotus
American River Conservancy	Carmichael Water District
American Whitewater Affiliation	Center for Sierra Nevada Conservation
Barber & Gonzales	Central Valley Project Association
Builders Exchange	Chili Bar Outdoor Center
Building Industry Association	Citizens for Water
Building Industry Association of Superior California	Citrus Heights Water District
California American Water	City of Auburn -- Planning Department
CALFED Bay-Delta Program	City of Folsom, Planning
California Water Quality Control Board Central Valley Region	City of Folsom, Utilities
California Certified Organic Growers	City of Placerville
California Chamber of Commerce	City of Placerville -- Community Development Department
California Conservation Corp.	City of Roseville -- Planning Department
California Department of Fish & Game, Region 2	City of Roseville -- Environmental Utilities
California Department of Housing and Community Development	City of Sacramento -- Environmental Department
California Department of Parks & Recreation; Gold Fields District	City of Sacramento -- Planning Department
California Department of Transportation	City of Sacramento --Utility Department
California Department of Water Resources	City of South Lake Tahoe
California Energy Commission PIER Program	City of South Lake Tahoe-- Planning Commission
CAL EPA Climate Action Team	City of South Lake Tahoe-- Public Works Director
California Farm Bureau Federation	Community Services District- El Dorado Hills
	Cooper, Thorne & Associates



## Notice of Preparation El Dorado Water & Power Authority Supplemental Water Rights Project – Distribution List

County of Sacramento -- Environmental Review & Assessment	El Dorado County Water Agency Board of Directors
County of Sacramento -- Planning & Community Development	El Dorado Gazette
CSPA	El Dorado Hills Board of Directors
Del Paso Manor Water District	El Dorado Hills CSD
Earth Justice Legal Defense Fund	El Dorado Hills Newcomer's Club
EDC Taxpayers for Quality Growth	El Dorado Irrigation District
EDC Air Quality Mgmt. District	El Dorado Irrigation District Board of Directors
EID Water Users Association	Environmental Council of Sacramento
El Dorado Business Alliance	Environmental Trvling Comp
El Dorado Chamber of Commerce	Fair Oaks Water District
El Dorado Citizens for Water	Farm Bureau
El Dorado Community Foundation	FAWN
El Dorado Coop Ext/UCCE	Federal Energy Regulatory Commission - San Francisco
El Dorado Cooperative Ext/UCCE	Friends of the River
El Dorado County	Friends of the River
El Dorado County - Planning Services	Fruitridge Vista Water Company
El Dorado County Agriculture Commission	Georgetown Divide Public Utility District
El Dorado County Air Pollution Control District	Georgetown Divide Public Utility District Board of Directors
El Dorado County Board of Supervisors	Georgetown Divide Resources Conservation District
El Dorado County Chamber of Commerce, Board of Directors	Golden State Water Company
El Dorado County Department of Transportation	Citizens for Water
El Dorado County Dept. of Transportation	Grizzly Flats Community Services District Board of Directors
El Dorado County Farm Bureau	Home Owners Assoc. President
El Dorado County Local Agency Formation Commission	Independent Consultant
El Dorado County Parks and Recreation Department	Joe Vicini Inc.
El Dorado County Planning Department	Kirkwood Meadows Public Utility District
El Dorado County Recorder-Clerk	League of Women Voters
El Dorado County Resource Conservation District	Lions Club- El Dorado Hills
El Dorado County Taxpayers Association	LWDS
El Dorado County Taxpayers for Quality Growth	Mountain Democrat

## Notice of Preparation El Dorado Water & Power Authority Supplemental Water Rights Project – Distribution List

Murray & Downs	Sacramento River Council
National Marine Fisheries Service, U.S. Dept. of Commerce/SW Region	Sacramento River Preservation Trust
National Marine Fisheries Service, U.S. Dept. of Commerce/Sacramento	Sacramento Suburban Water District
Native American Heritage Commission	Sacramento Valley Conservancy
Natural Heritage Institute	S.A.G.E.
Optimist Club	San Juan Water District
Orangevale Water Company	Save the American River Association
Pacific Consensus Group	Serrano Partners
Palisades Development Inc.	Serrano Home Owners Association
PG&E	Shingle Springs- Cameron Park Chamber of Commerce
Placer County Planning Department	Shingle Springs-Cameron Park Ambassadors Club
Placer County Water Agency	Sierra Club -- Motherlode Chapter
Placerville Residents Involved in Defending Our Environment	Sierra Nevada Alliance
Planning and Conservation League	Sierra Nevada Conservancy
POWER	Sierra Nevada Forest Protection Campaign
Protect American River Canyons	Sierra Pacific Industries
Quality Growth	Sierra Vista Winery
Rancho Murieta Community Services District	Smith & Gabbert Inc.
Regional Water Authority	South Fork Dialogue Steering Committee
Resource Management International	South Lake Tahoe City Council-- California Tahoe Conservancy
Rio Linda/Elverta Community Water District	South Lake Tahoe Fire Department
RMAC	South Tahoe Public Utility District
Sacramento Area Council of Governments	South Tahoe Public Utility District Board of Directors
Sacramento Audubon Society	Springfield Meadows Community Services District
Sacramento Bee -- Folsom Bureau	State Clearinghouse; Office of Planning and Research
Sacramento Business Journal	State of California -- Air Resources Board
Sacramento County -- Office of County Clerk	State of California -- Boating and Waterways
Sacramento County Water Agency	State of California -- Forestry and Fire Protection
Sacramento Municipal Utility District (SMUD)	State of California -- Parks and Recreation, Office of Historical Preservation

# Notice of Preparation El Dorado Water & Power Authority Supplemental Water Rights Project – Distribution List

State of California -- Public Utilities Commission	University of California Cooperative Extension
State of California -- Resources Agency	USDA-NRCS
State of California Environmental Protection Agency	Water Forum
State Water Resources Control Board, Central Valley Region WQCB	
State Water Resources Control Board	
Tahoe City Public Utility District	
Tahoe City Public Utility District Board of Directors	<u>PUBLICATIONS</u>
Tahoe Daily Tribune	Mountain Democrat
Tahoe Regional Planning Agency	Village Life (El Dorado Hills)
The MacDiarmid Company	Sacramento Bee
The Mansour Company	El Dorado Hills Telegraph
Trinity Associates	Georgetown Gazette
U.S. Fish and Wildlife Service, Water Ops Division Chief	John Doolittle, U.S. Congress, District 4
U.S. Fish and Wildlife Service, Deputy Field Supervisor	Ted Gaines, California State Assembly, District 4
U.S. Fish and Wildlife Service, Field Supervisor	
U.S. Army Corps of Engineers, District Engineer	
U.S. Army Corps of Engineers, Regulatory Branch	
U.S. Bureau of Reclamation, CCAO	
U.S. Bureau of Reclamation, Mid-Pacific Region	<u>POSTINGS</u>
U.S. Bureau of Reclamation, Mid-Pacific Region, Central Valley Operations	EID CS Building
U.S. Bureau of Land Management	EDC Recorder/Clerk
U.S. Department of Energy, Western Area Power Administration	EID Website
U.S. Environmental Protection Agency, Region 9	El Dorado County Library
U.S. Forest Service, Amador Ranger District	El Dorado Water and Power Authority
U.S. Forest Service, El Dorado National Forest	El Dorado County Water Agency
U.S. Forest Service, Placerville Ranger District	Georgetown Divide Public Utilities District
U.S. Geological Survey, Water Resources Division	
UC Davis	
United Anglers of California	

# Notice of Preparation El Dorado Water & Power Authority Supplemental Water Rights Project – Distribution List

## INDIVIDUALS

Albert Hazbun  
    Tim Lee  
Alice Q. Howard  
Charles Bertolette  
    Chuck Bacchi  
    Ed Bacchi  
Bernard Carlson  
    Edio Delfino  
Tom Klemann  
    Doug Leisz  
Pete Meincoe  
    Sam Miller  
Henry Batsel  
Fred Schardt  
    Mel Lucke  
    Dick Bush  
Art Marinaccio  
Patrick S. Couch  
    Bill Bennett  
    Dave Bolster  
    Kirk Bone  
    Scott Chadd  
Nancy Chinlund  
Greg Greenwood  
    Keith Johnson  
Mike McDougal  
    Jonas Minton  
    Mike Neal  
    Carol Patton  
Barry Wasserman  
Grant Werschkull  
Dr. Vicki Barber  
Madeleine J. Tammi  
    Ed Matthews  
David E. Whittington  
    Mary Pat Frick  
    Nancy K. Mundt  
Rene P. Simonis  
Susan Rayburn  
    Roberta Long  
    Hy Vitcov  
    Polly Roseu