

## Welcome



The Yolo HCP/NCCP is seeking landowners interested in establishing a conservation easement on their property to protect species habitat on working agricultural lands.

[continue reading](#)

The Yolo Habitat Conservation Plan & Natural Community Conservation Plan is now fully adopted and permitted. Program implementation officially began on January 11, 2019.

Thank you to the many entities and individuals that have contributed to the Yolo HCP/NCCP.

### Yolo HCP/NCCP



Learn more about the Conservancy and the Yolo Habitat Conservation Plan/ Natural Community Conservation Plan.

### Landowners



The Conservancy forms agreements with landowners to conserve natural habitat.

### Yolo HCP/NCCP Fees:

The annual fee adjustment for 2023 will be in effect as of March 27, 2023. All application fees received on or after March 27, 2023 are subject to the updated fees.

#### 2023 Fees (per acre):

- Land Cover Fee \$16,202
- Fresh Emergent Wetland \$87,337
- Valley Foothill Riparian \$91,814
- Lacustrine and Riverine \$70,046

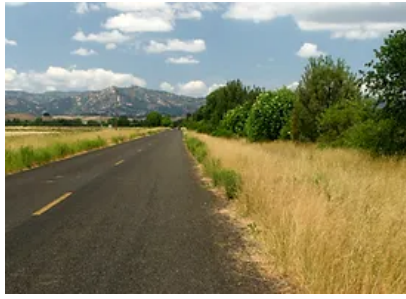
### Conservation

### Permitting

See the [Permitting page](#) for more information and to download the current application forms.



The Yolo HCP/NCCP protects 12 endangered species and conserves 33,362 acres of land.



The Yolo HCP/NCCP will streamline the permitting process for new developments in Yolo County.

### Press



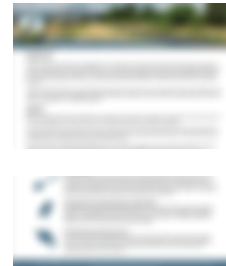
See what local news outlets are saying about the Yolo HCP/NCCP.

### Documents



Read the Yolo HCP/NCCP.

### Yolo Habitat Conservation Plan/ Natural Community Conservation Plan



Download the plan overview

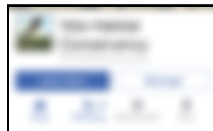
Learn more

Download the plan

Read the plan

Sign on to support the plan

See list of current supporters



Visit us on Facebook

Copyright © 2020 Yolo Habitat Conservancy

Mailing Address: PO Box 2202, Woodland, CA 95776 Physical Address: 625 Court Street, Room 202, Woodland, CA 95695

Phone: 530-666-8150 General Email: info@yolohabitatconservancy.org