



Glenn-Colusa Irrigation District's Commitment to Serving Our Lands and Environment Sustainably

From years of historic and devastating drought to implementation of a new groundwater act, new state regulations and new threats to water rights, California's complex water landscape is in an era of unprecedented challenges and change. Through it all, Glenn-Colusa Irrigation District (GCID) is dedicated to providing reliable, affordable water supplies to its landowners and water users, while ensuring the environmental and economic viability of the region. Learn more about GCID's commitment to the region and how it is delivering on its mission.

GCID is the largest irrigation district in the Sacramento Valley with a long history of serving farmers and the agricultural community, while also maintaining critical fish and wildlife habitat.

GCID's core mission is to deliver to its landowners and water users a secure and reliable water supply as efficiently and economically as possible, while preserving and protecting all resources.

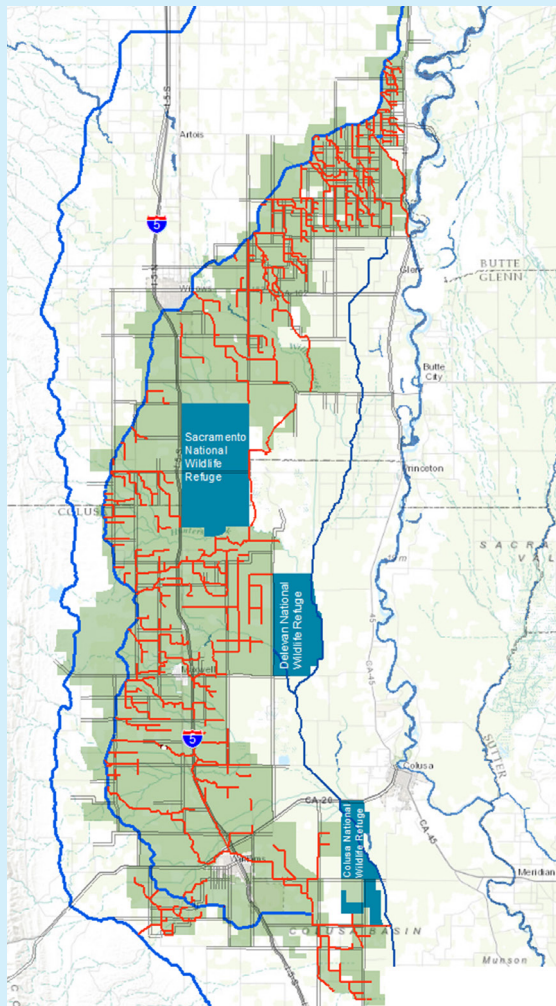
The District's water rights were established in 1883; one of the earliest and largest water rights on the Sacramento River, and GCID was formally organized in 1920.

The District is located approximately 90 miles north of Sacramento, California with its headquarters in Willows.

- The District covers approximately 175,000 acres, of which approximately 140,000 acres are farmed
- There are more than 1,000 landowners in the District and an additional 200 tenant water users
- There are 1,200 acres of private habitat land and 21,000 acres of protected federal wildlife refuges

As a public agency, GCID is committed to operating as efficiently as possible and delivering a reliable, responsibly managed water supply.

- Governed by a five-member board of directors
- Seventy employees, with a very low turnover rate
- Extensive "Water Measurement Report" prepared annually



GCID seeks to efficiently and effectively manage and deliver water through an ever-improving delivery system and responsible policies.

A key to this is the District's steady commitment to ensuring the long-term sustainability of the surface and groundwater resources in the region. To best serve its landowners and water users, GCID is continually evaluating its operations and is focused on maintenance and improving infrastructure, while also practicing responsible water supply management.

GCID's main pump station, its only diversion from the Sacramento River, is located near Hamilton City. The District's 65-mile long Main Canal conveys water into a complex system of nearly 1,000 miles of canals, laterals and drains, much of it initially constructed in the early 1900s.



GCID is part of the Sacramento River Settlement Contractors, whose current water supplies are diverted under the “Sacramento Settlement Water Contracts” with the Bureau of Reclamation.

- *The first Settlement Contracts were established in 1964 to allow the Bureau to operate and divert water for the newly constructed Central Valley Project. The contract was renewed for another 40-year term in 2005. The District still retains its historic water rights.*
- *The contract provides GCID with 720,000 acre-feet of base water supply for the months of April through October, and 105,000 acre-feet of Central Valley Project water that is purchased during the months of July and August.*
- *During a designated critical year when natural inflow to Shasta Reservoir is less than 3.2 million acre-feet, Settlement Contractors’ supplies are reduced by 25%. GCID’s total supply is 618,000 acre-feet when it is reduced by 25%.*
- *Additionally, the District has rights, under a State Water Resources Control Board (SWRCB) permit, for water from November 1 to March 15 and the District reports on diversions to the SWRCB. The water is used for winter flooding for waterfowl, rice straw decomposition and crops.*

GCID has a deep commitment to sustainable practices – both in managing the water supply, as well as preserving and protecting the environment and wildlife in the region.

GCID and its sister agencies in the region have been leaders in efforts to work with solution-oriented environmental organizations (including American Rivers, The Nature Conservancy, California Trout, Audubon California, and the California Waterfowl Association) to manage water along the Sacramento River for the benefit of salmon, birds that use the Pacific Flyway, and endangered terrestrial species such as the Giant Garter Snake. These efforts are all devoted to providing water for the economy and the environment in the Sacramento Valley.

In partnership with other agencies and organizations, GCID continues to develop, support, and fund local and regional projects that have improved migratory corridors and habitat for anadromous fish (salmon and steelhead) within the region, including:

- *The construction of a state-of-the-art fish screening facility at the Hamilton City pump station that protects all fish in the vicinity of the diversion.*
- *The construction of a gradient facility that helped restore and stabilize the river channel and surface water elevations at the fish screen to ensure safe fish passage conditions and effective screen performance.*
- *The Painter’s Riffle restoration project, near Redding, to enhance salmon habitat that had been obstructed. GCID used its own staff and assets to construct Painter’s Riffle in December 2014.*
- *Fall water supplied by GCID to thousands of acres of rice land provides valuable habitat for migrating waterfowl in the Pacific Flyway during the winter months.*
- *Operations and maintenance programs to protect the endangered Giant Garter Snake.*



For more information contact us at: www.gcid.net or (530) 934-8881

ABOUT SITES RESERVOIR:

- GCID is a leader of the Sites Project Joint Power Authority
- Long viewed as one of the leading candidates for new surface storage in the state
- Could advance long-term objectives of improved water management and restored ecological health for the Delta and the Sacramento River watershed
- Would store a total of 1.8 million acre feet, with an estimated available average yield of 500,000 acre-feet
- Critical for a more reliable water supply for the state



GCID has completed numerous projects to benefit fish and wildlife, as well as to deliver water to maintain critical wildlife habitat.

GCID delivers water to 21,000 acres of critical wildlife habitat comprising the Sacramento, Delevan and Colusa National Wildlife Refuges, and 1,200 acres of permanent wetlands.