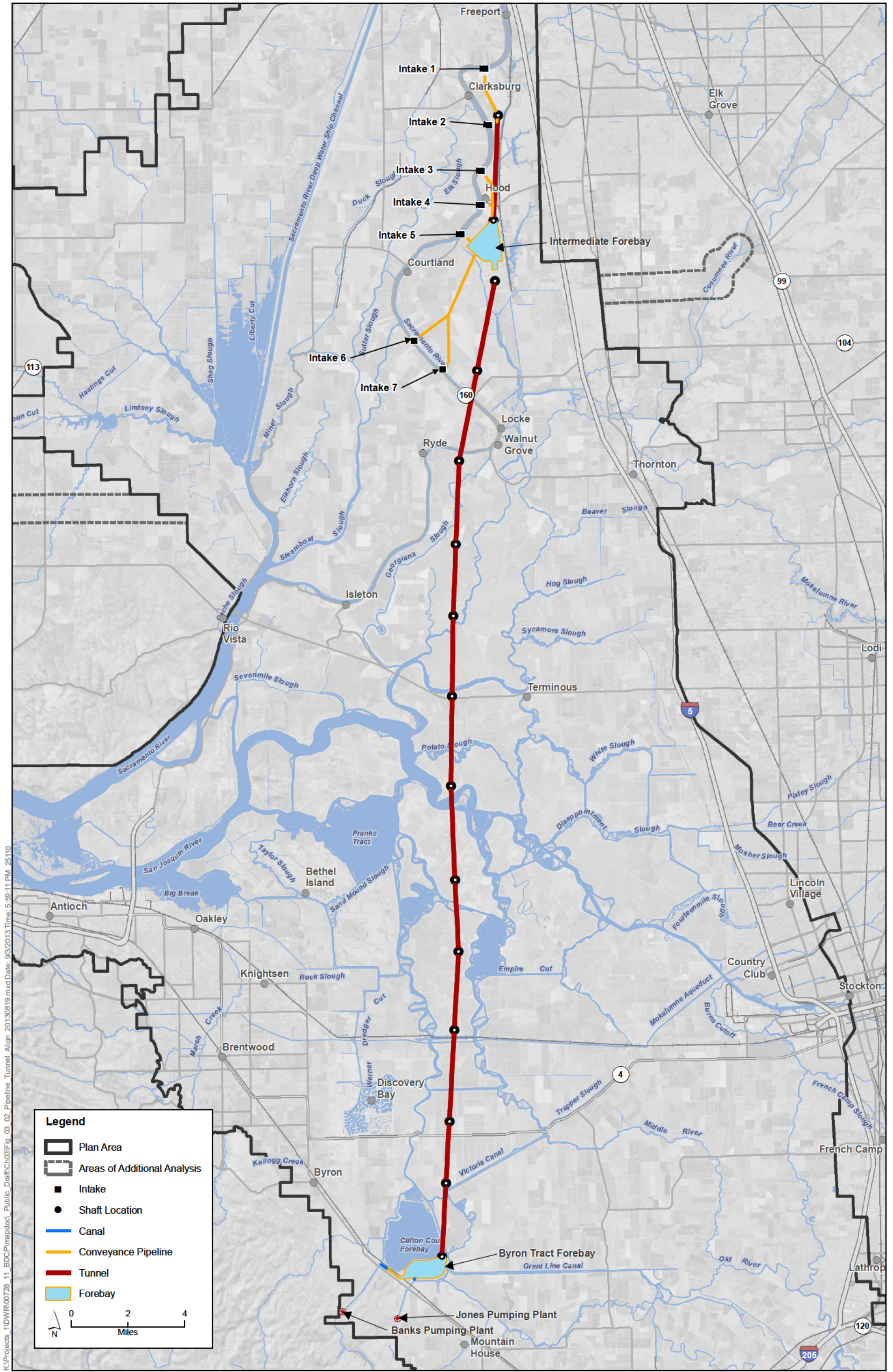


Sources: Plan Area, ICF 2012; Area of Additional Analysis, ICF 2012; Restoration Opportunity Areas, SAIC 2012; Conservation Zones, SAIC 2012

Figure 3-1
Conservation Zones and Restoration Opportunity Areas



K:\Projects_1\DW\00726_11_BDC\pmapdoc\Public_Draft\Ch03\Fig_03_02_Pipeline_Tunnel_Align_20130819.mxd Date: 9/3/2013 Time: 5:59:11 PM 25110

Sources: Plan Area, ICF 2012; Option Features (Rev 10b), DHCCP DWR 2012

Figure 3-2
Pipeline/Tunnel Alignment Overview (Alternatives 1A, 2A, 3, 5, 6A, 7, and 8)

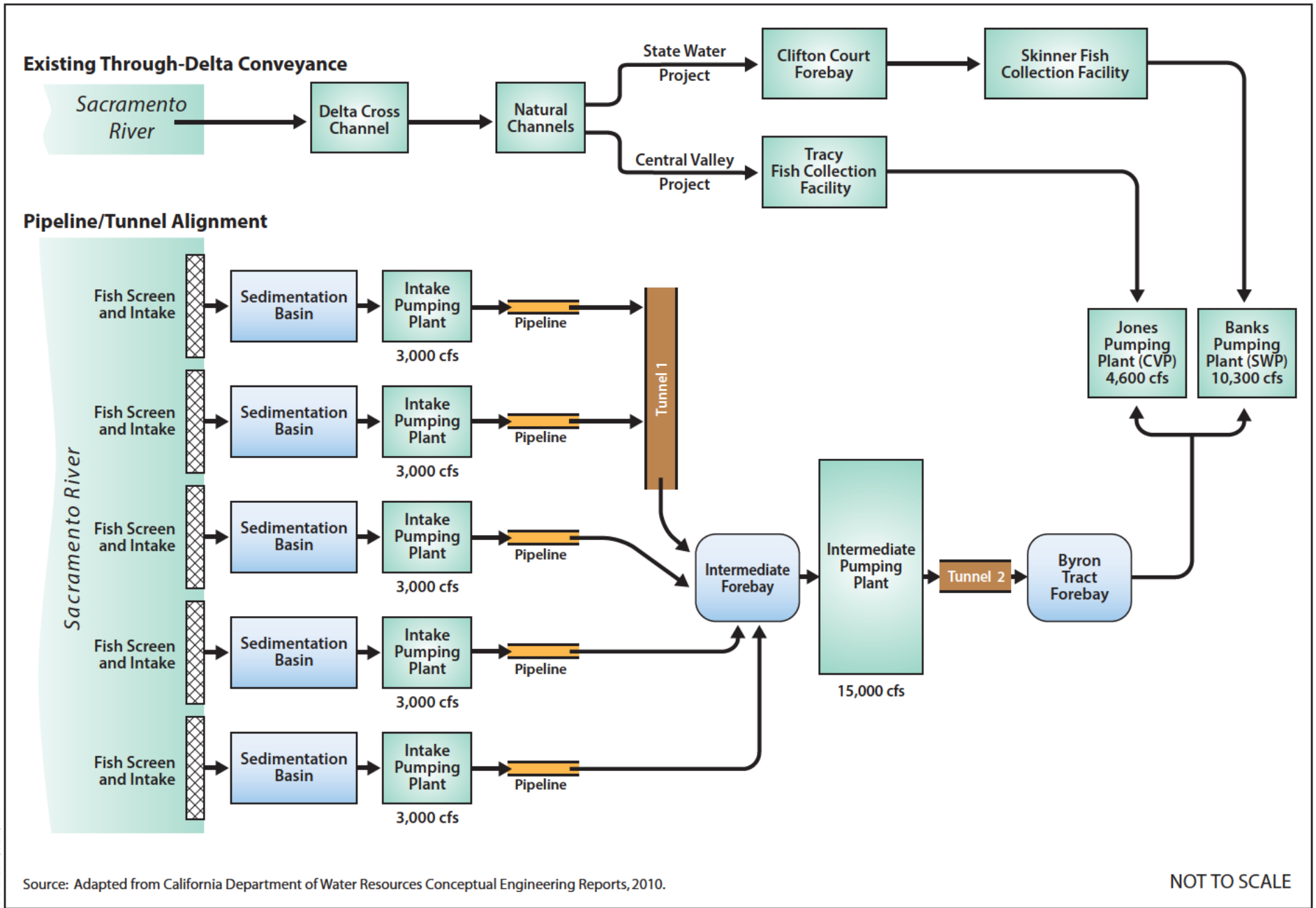


Figure 3-3
Alternatives 1A and 2A Conveyance Schematic

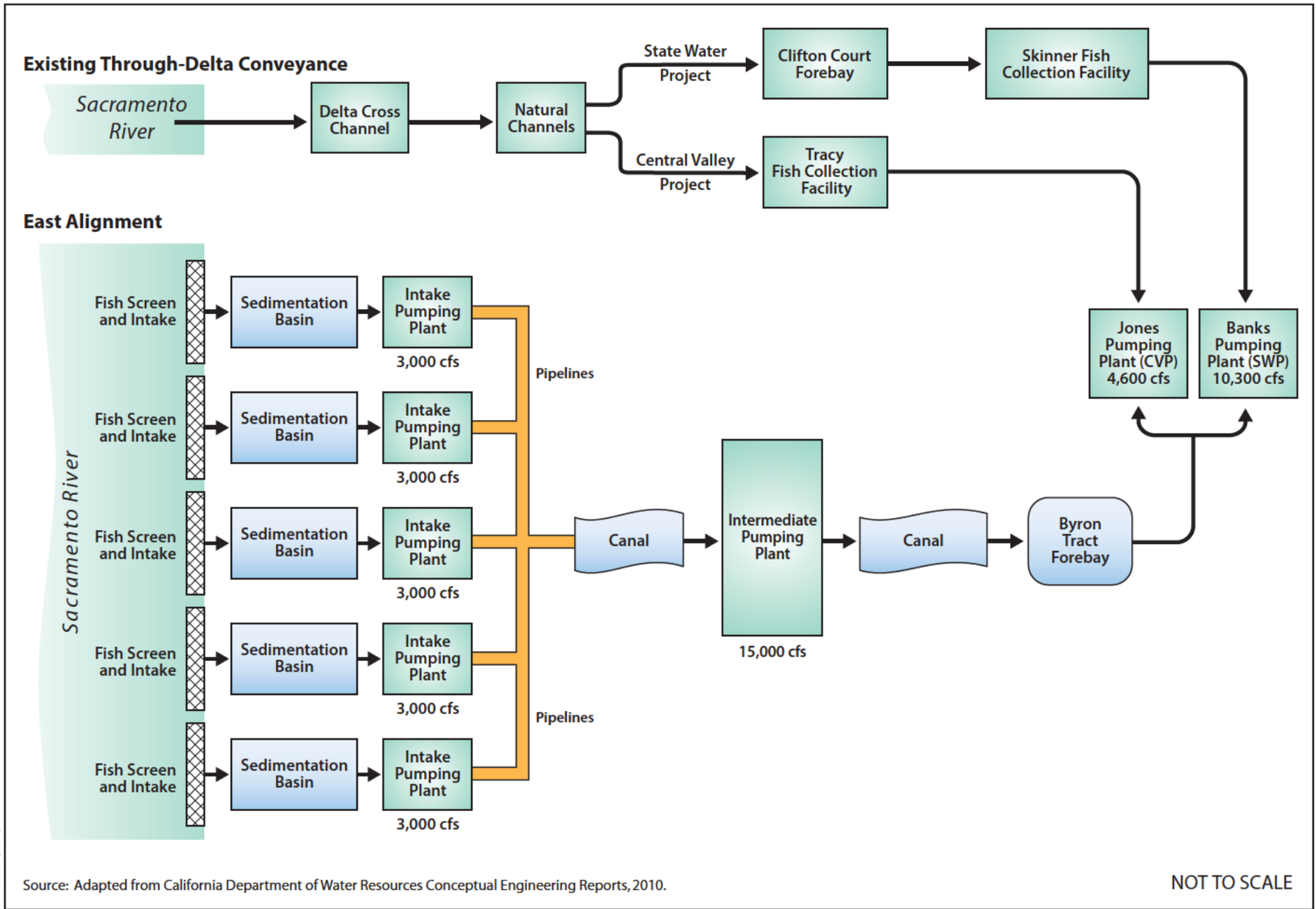
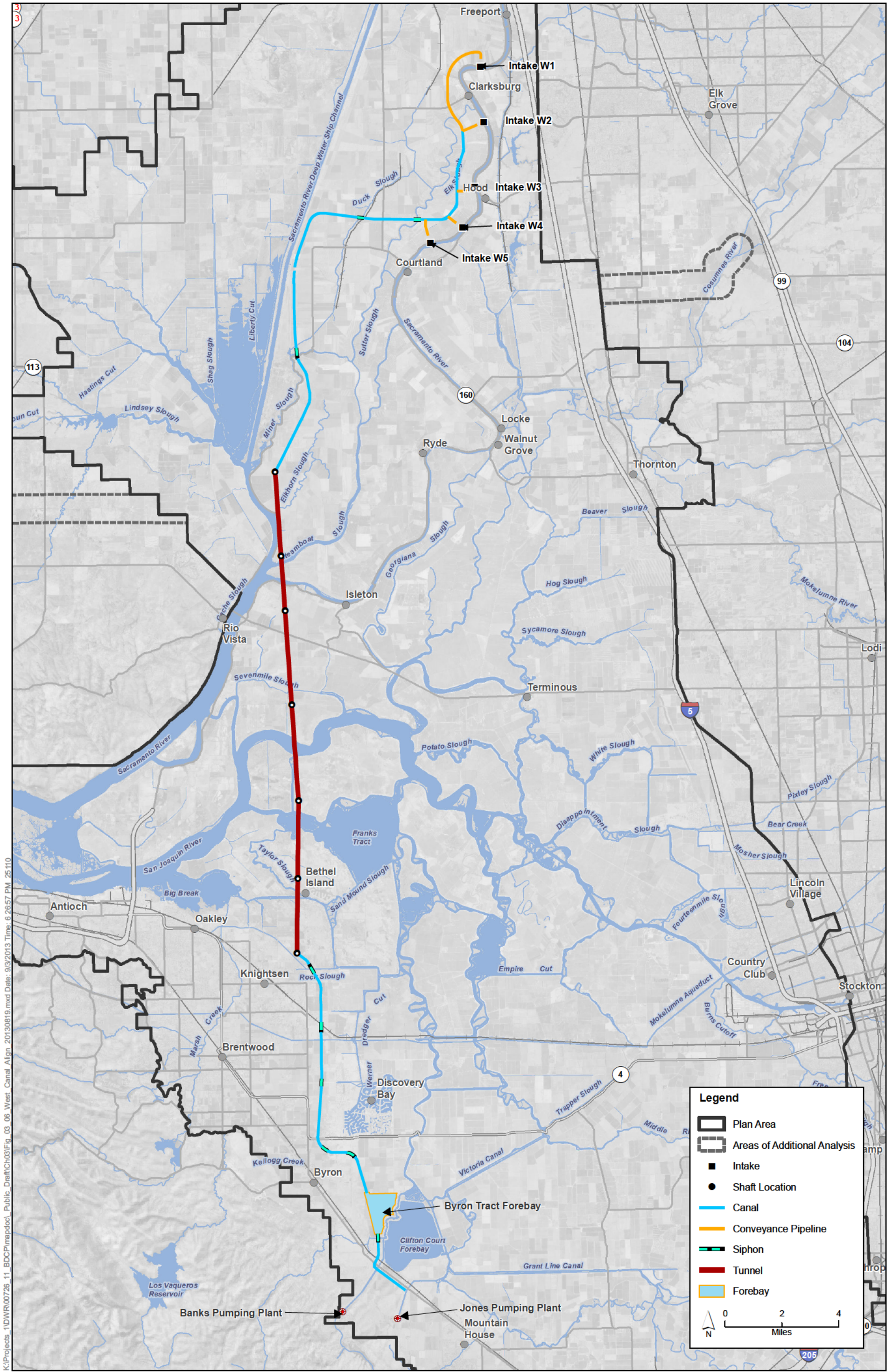


Figure 3-5
Alternatives 1B and 2B Conveyance Schematic



Legend

- Plan Area
- Areas of Additional Analysis
- Intake
- Shaft Location
- Canal
- Conveyance Pipeline
- Siphon
- Tunnel
- Forebay

0 2 4
Miles

K:\Projects_1\DW\00726_11_BDC\pmapdoc\Public_Draft\Ch03\Fig_03_06 West Canal Align_20130819.mxd Date: 9/3/2013 Time: 6:26:57 PM 25.110

Sources: Plan Area, ICF 2012; Area of Additional Analysis, ICF 2012; Option Feature (Rev 10b), DHCCP DWR 2012

Figure 3-6
West Alignment Overview (Alternatives 1C, 2C, and 6C)

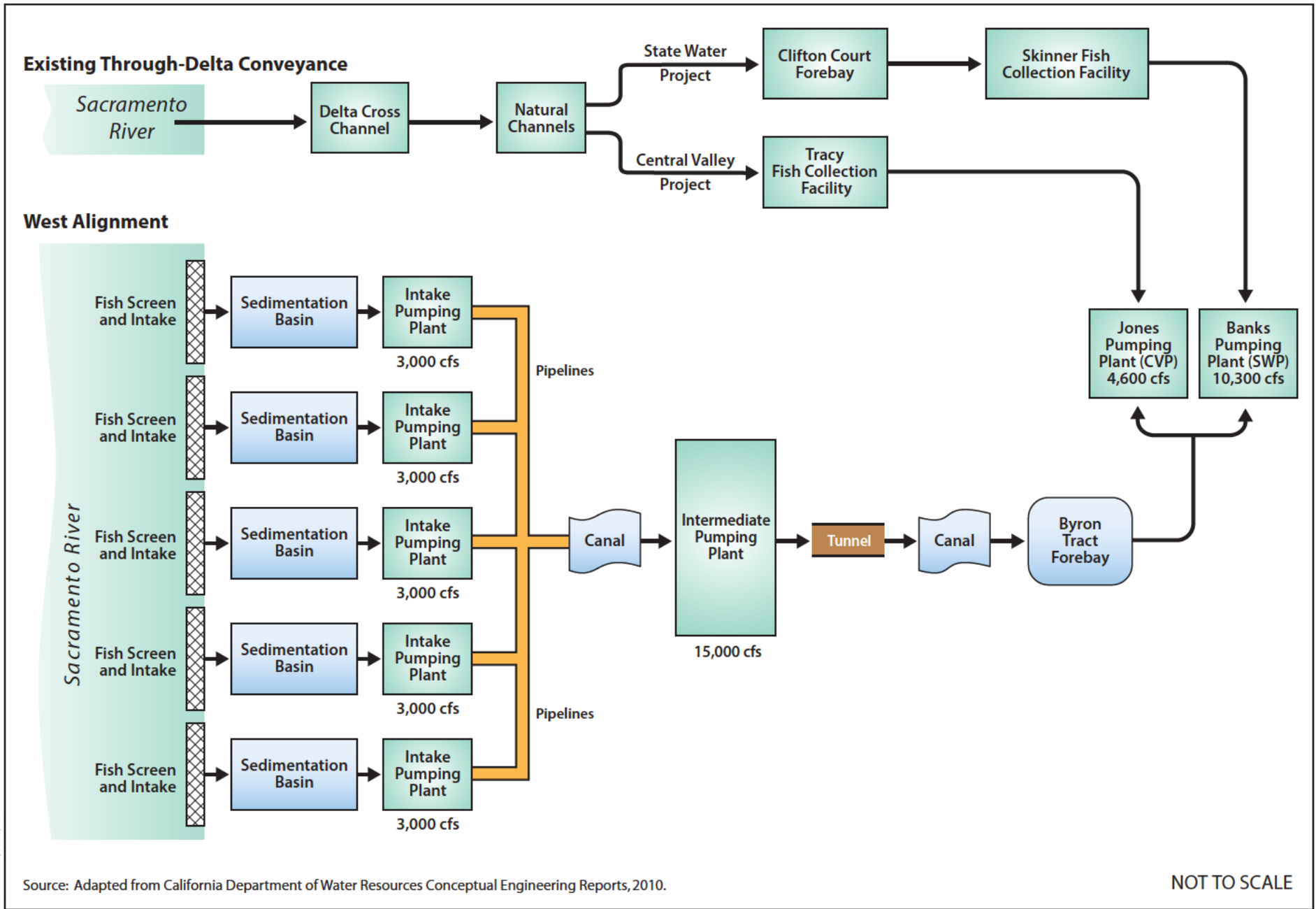
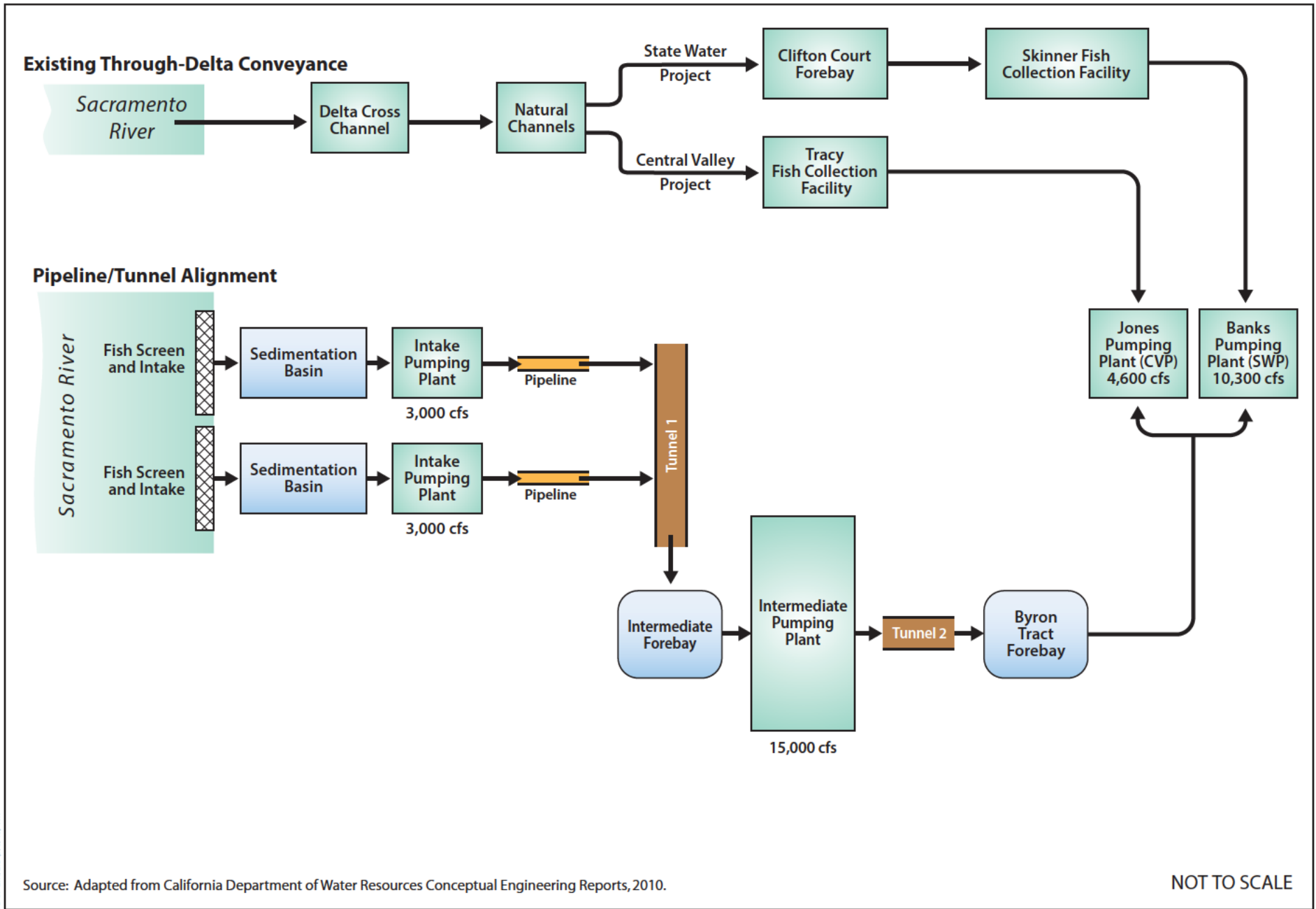
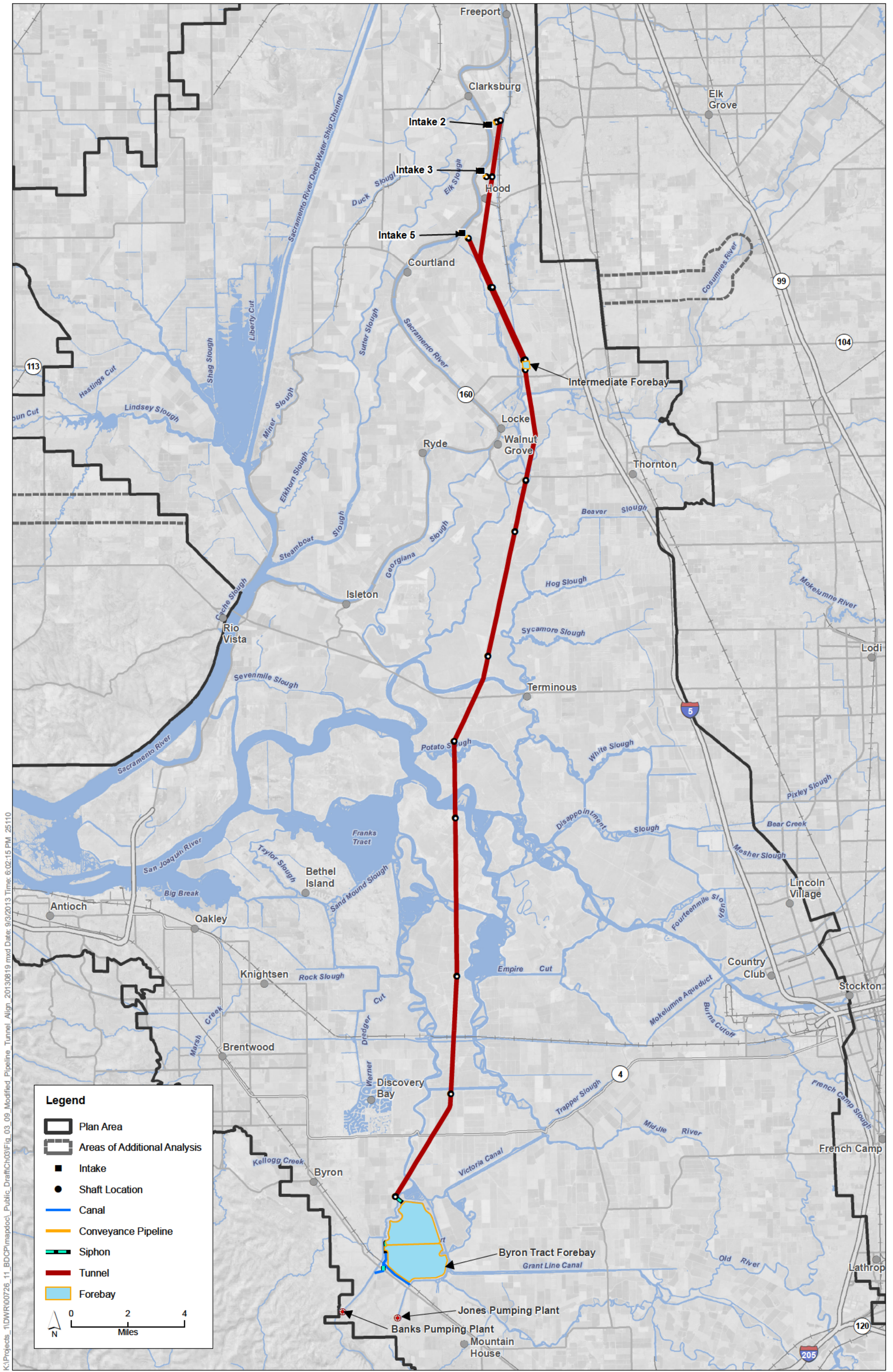


Figure 3-7
Alternatives 1C and 2C Conveyance Schematic



BDCP EIR/EIS (9/3/13) TM

Figure 3-8
Alternative 3 Conveyance Schematic



K:\Projects_1\DW\00726_11_BDCP\mapdoc\Public_Draft\Ch03\Fig_03_09_Modified Pipeline Tunnel_Align_20130819.mxd Date: 9/3/2013 Time: 6:02:15 PM 25110

Legend

- Plan Area
- Areas of Additional Analysis
- Intake
- Shaft Location
- Canal
- Conveyance Pipeline
- Siphon
- Tunnel
- Forebay

0 2 4
Miles

Sources: Plan Area, ICF 2012; Option Features (Rev 2b), DHCCP DWR 2013

Figure 3-9
Modified Pipeline/Tunnel Alignment Overview (Alternative 4)

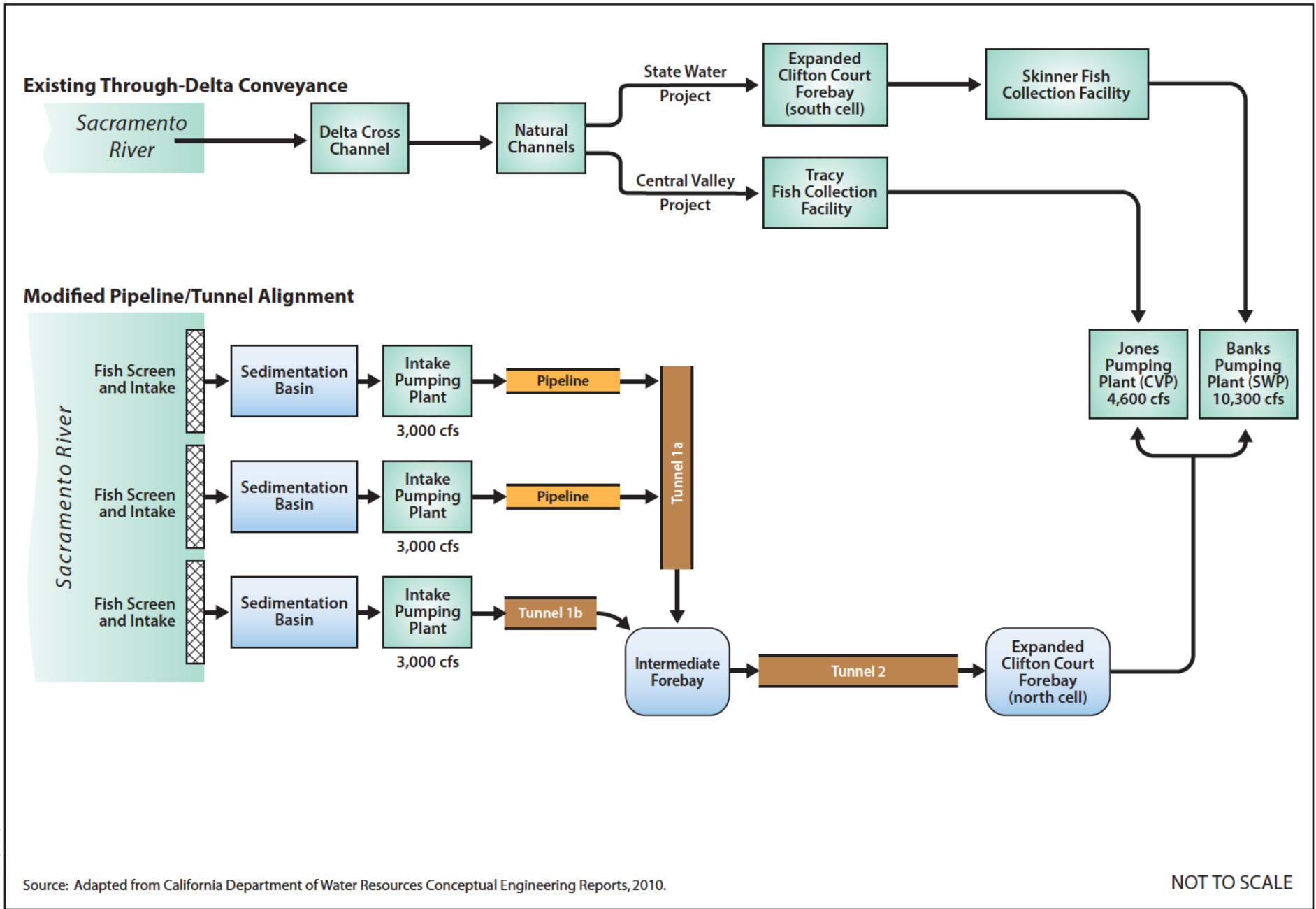
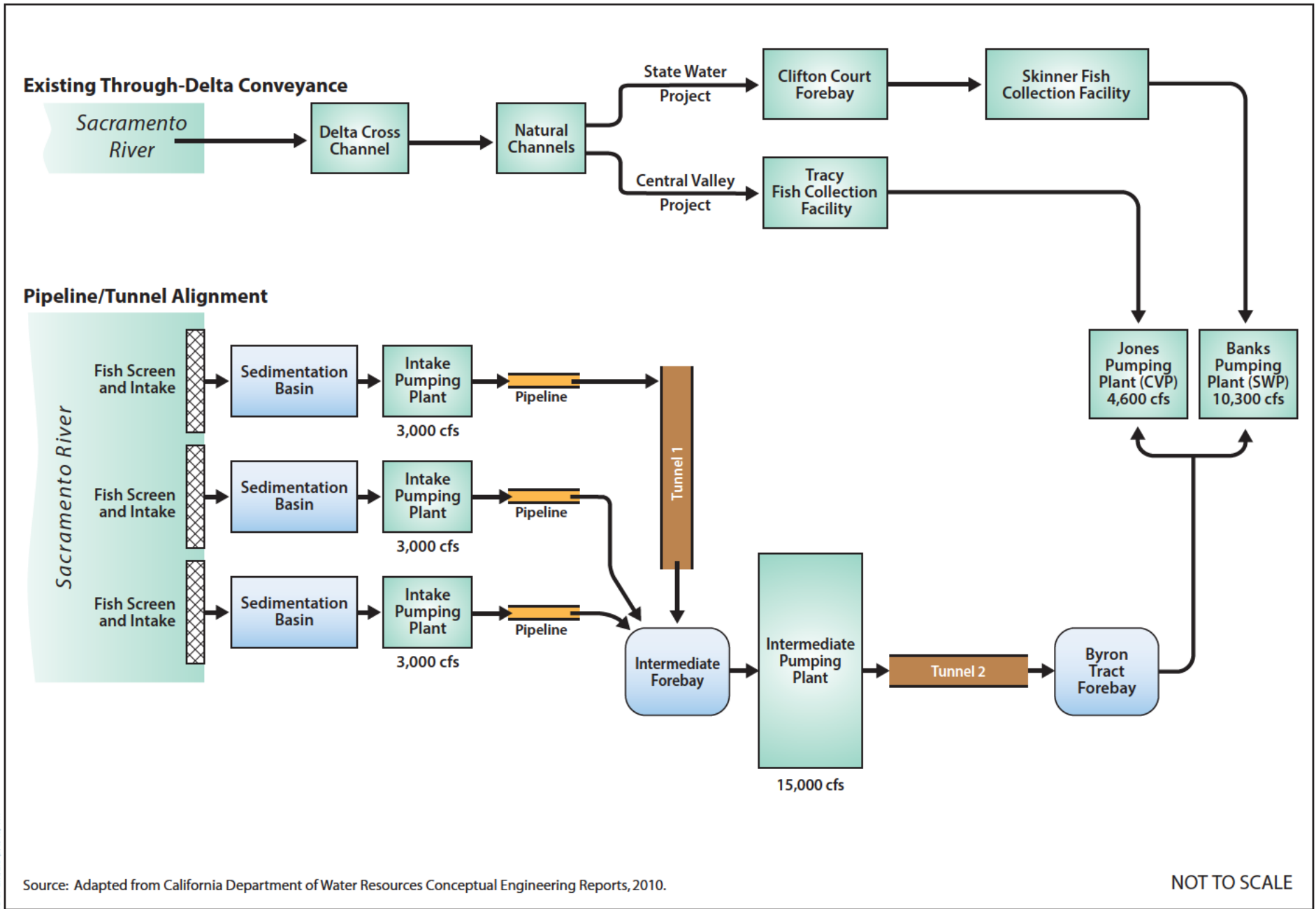
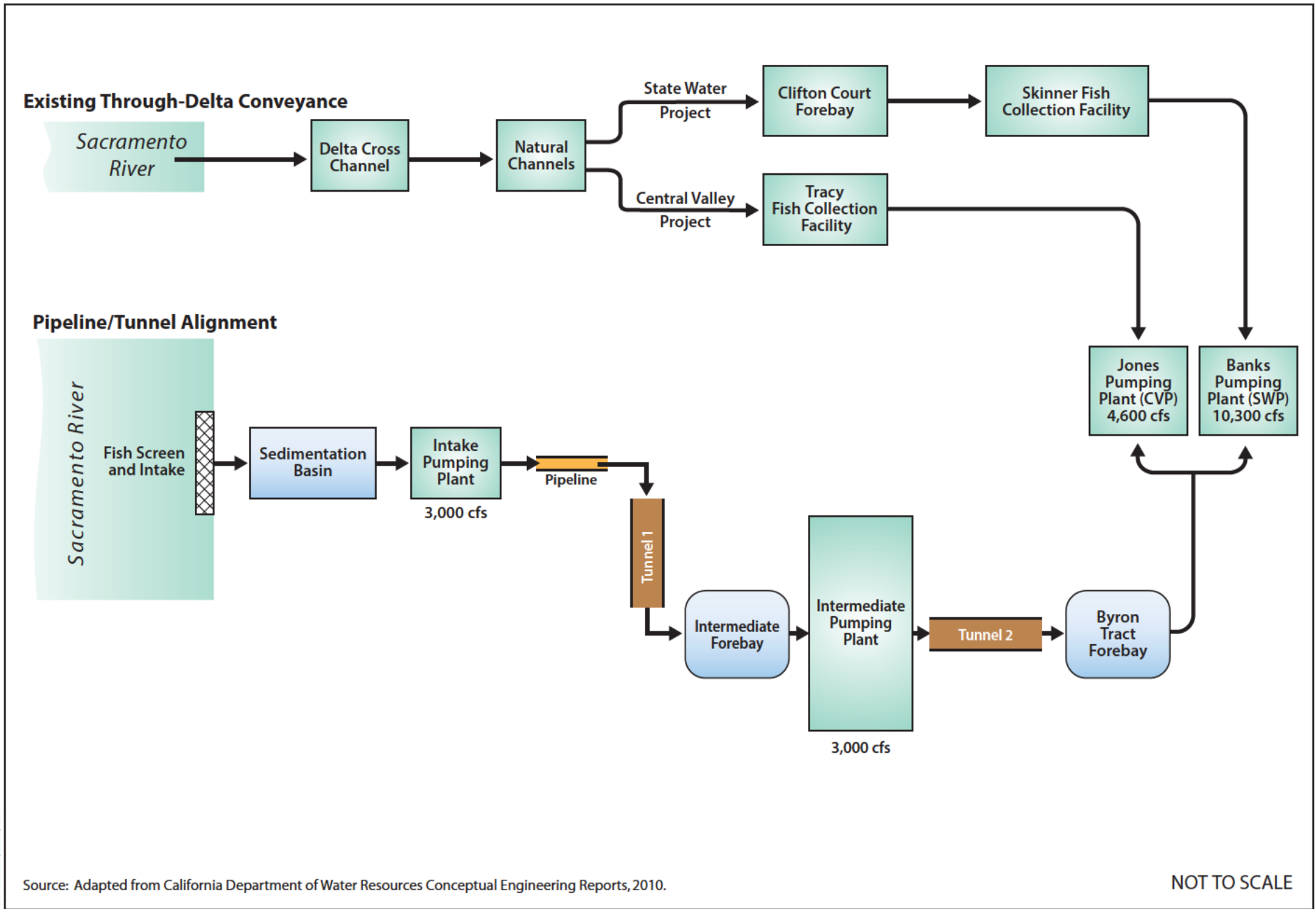


Figure 3-10
Alternative 4 Conveyance Schematic



BDCP EIR/EIS (9/3/13) TM

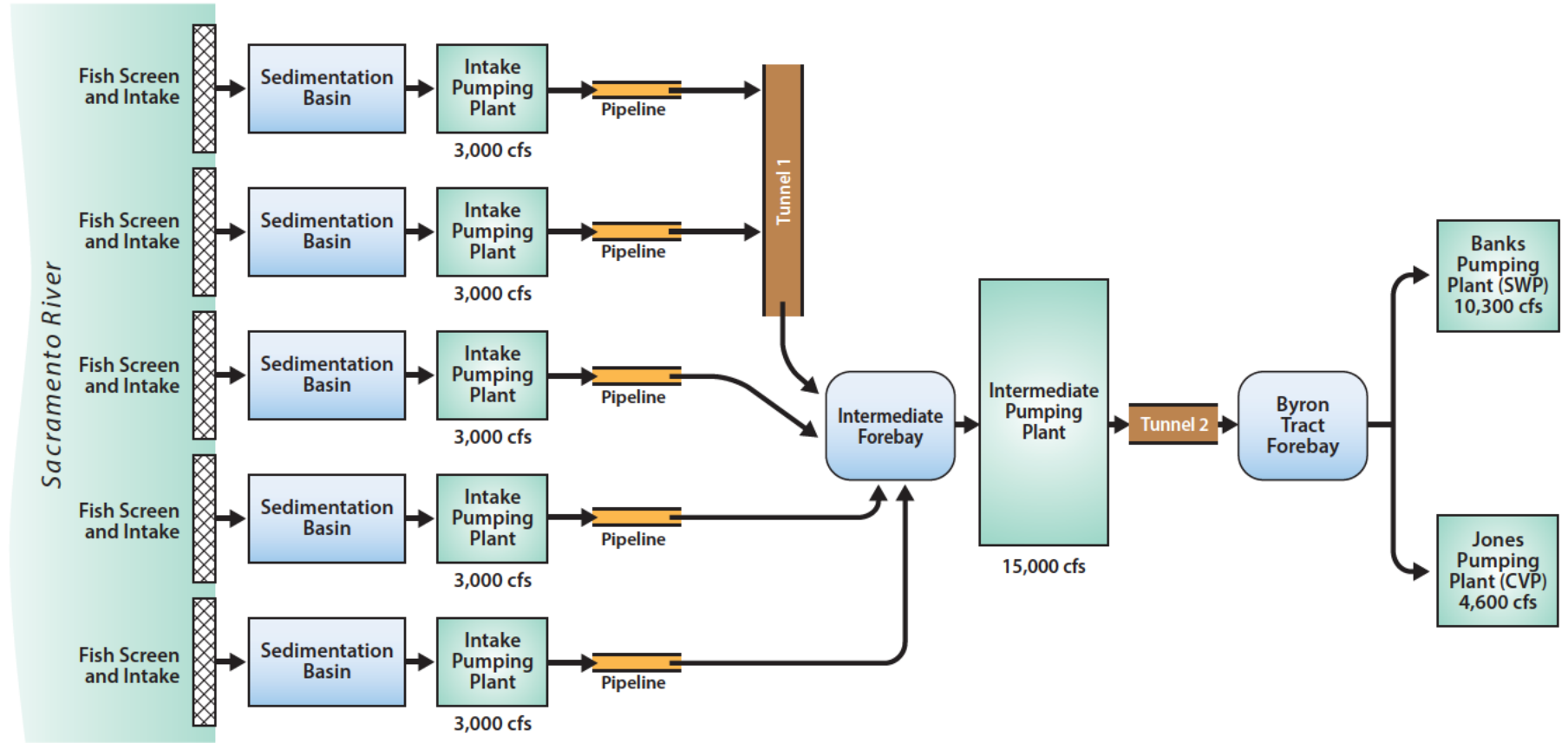
Figure 3-11
Alternatives 7 and 8 Conveyance Schematic



BDCP EIR/EIS (9/3/13) TM

Figure 3-12
Alternative 5 Conveyance Schematic

Pipeline/Tunnel Conveyance

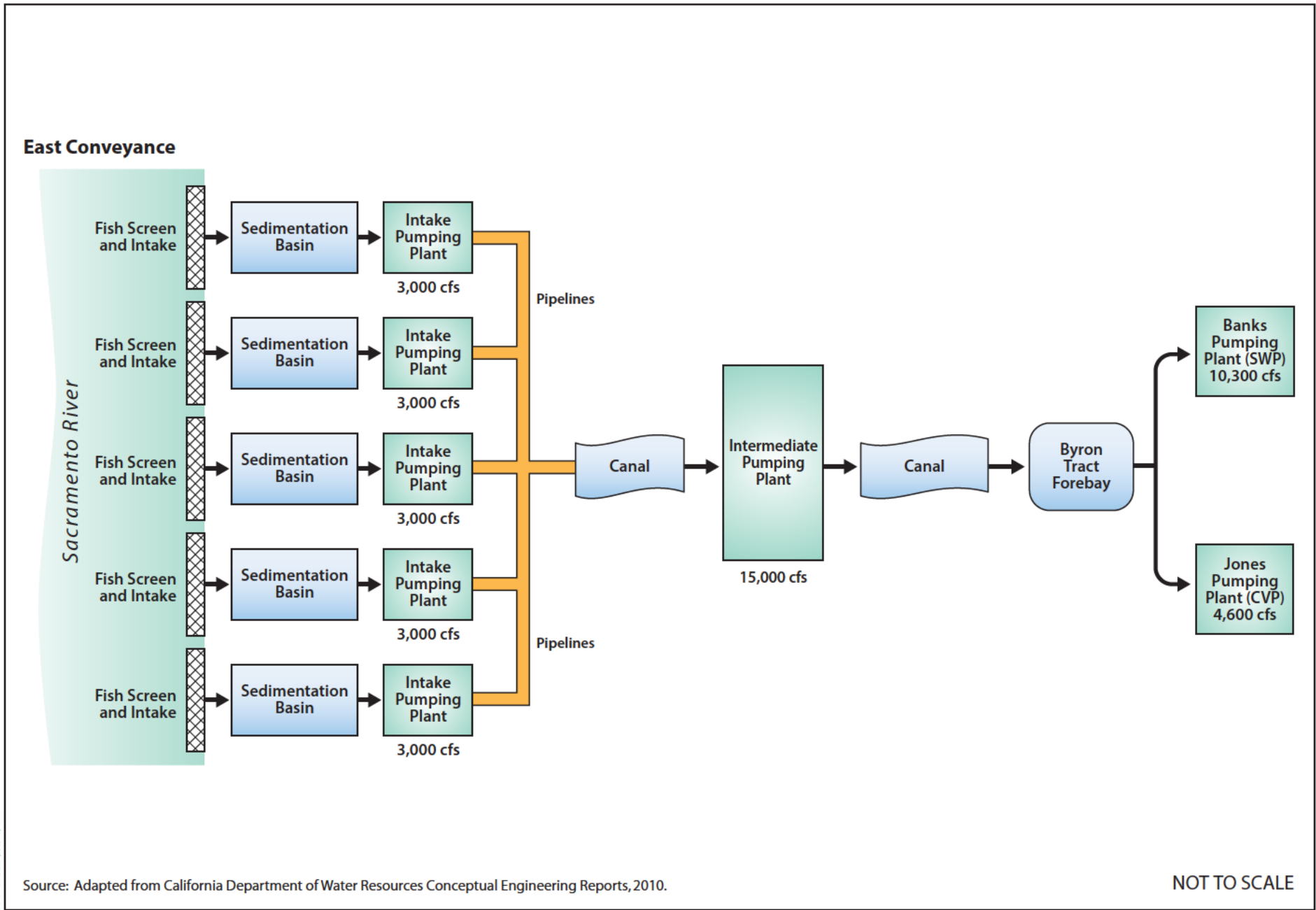


Source: Adapted from California Department of Water Resources Conceptual Engineering Reports, 2010.

NOT TO SCALE

BDCP EIR/EIS (9/3/13) TM

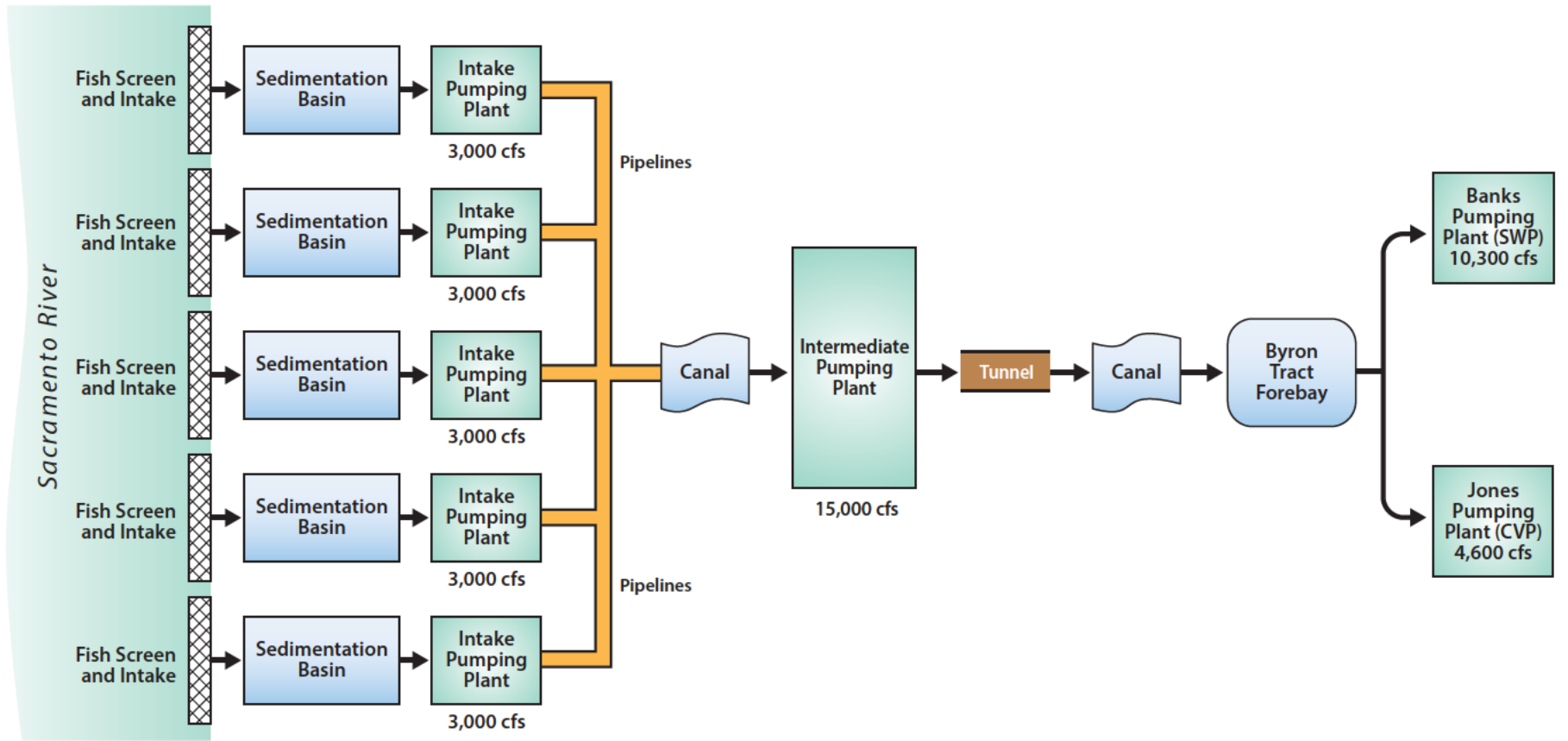
**Figure 3-13
Alternative 6A Conveyance Schematic**



BDCP EIR/EIS (9/3/13) TM

Figure 3-14
Alternative 6B Conveyance Schematic

West Conveyance

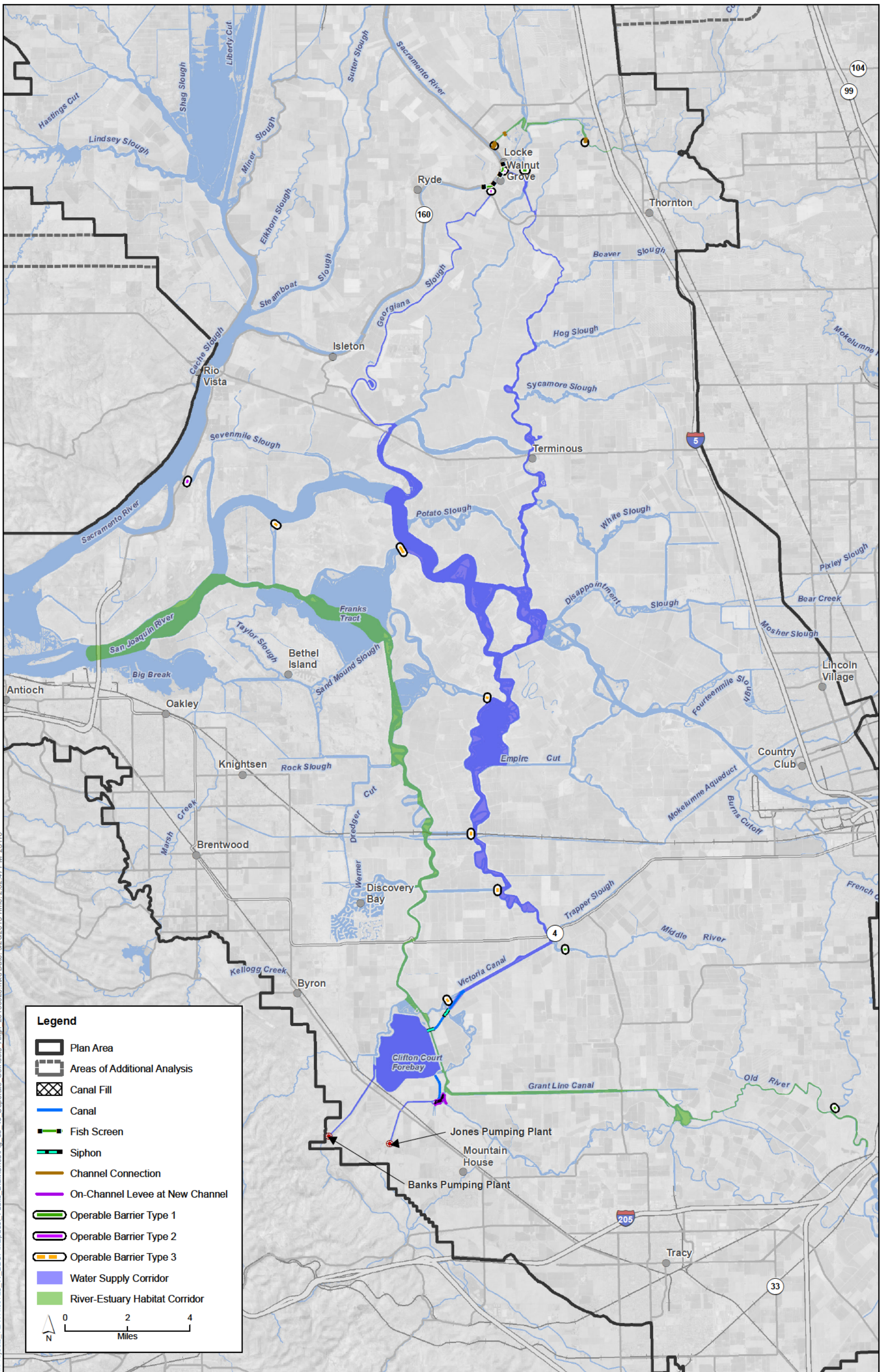


BDCP EIR/EIS (9/3/13) TM

Source: Adapted from California Department of Water Resources Conceptual Engineering Reports, 2010.

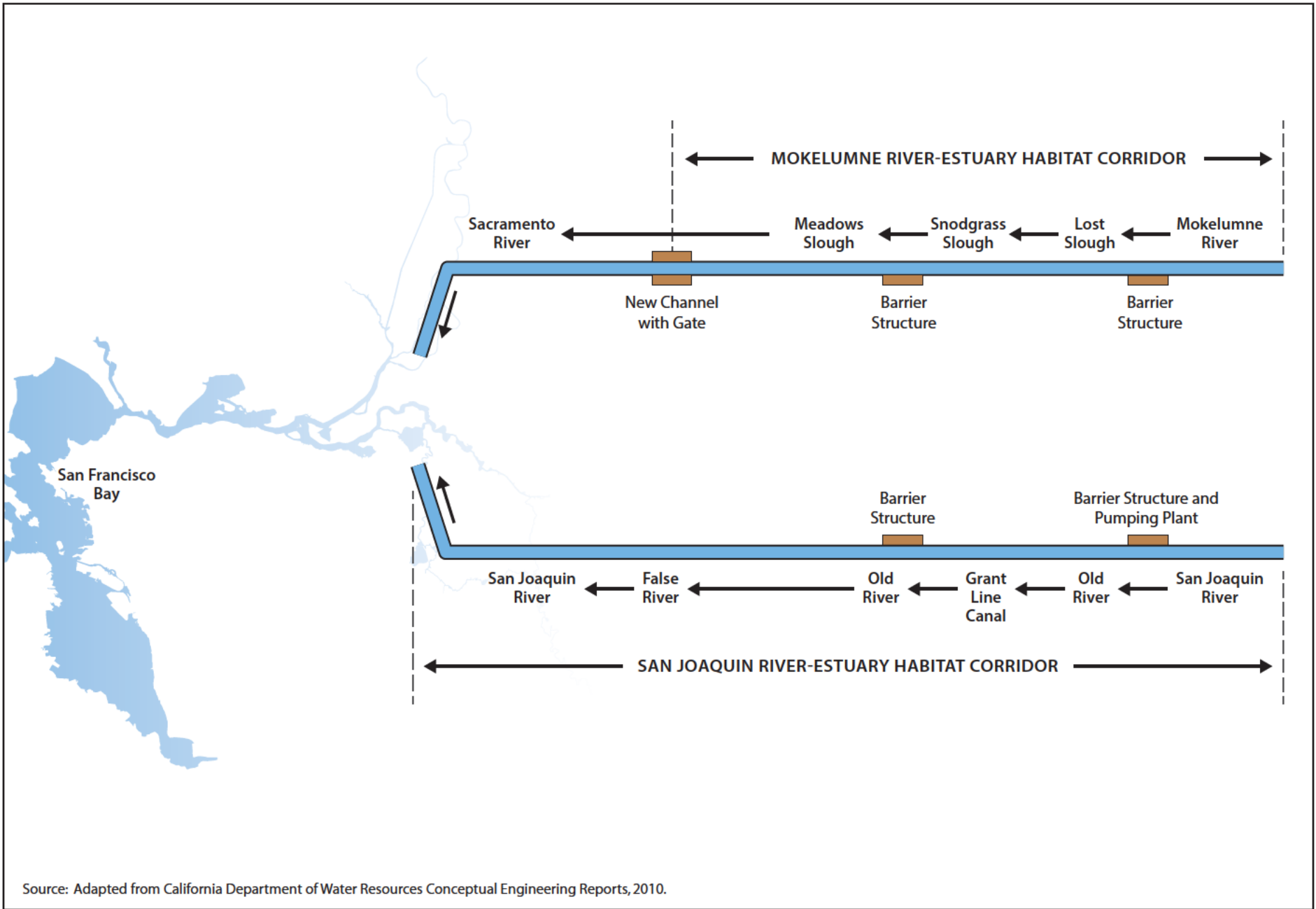
NOT TO SCALE

Figure 3-15
Alternative 6C Conveyance Schematic



Sources: Plan Area, ICF 2012; Area of Additional Analysis, ICF 2012; Option Features (Rev 3b), DHCCP DWR 2012

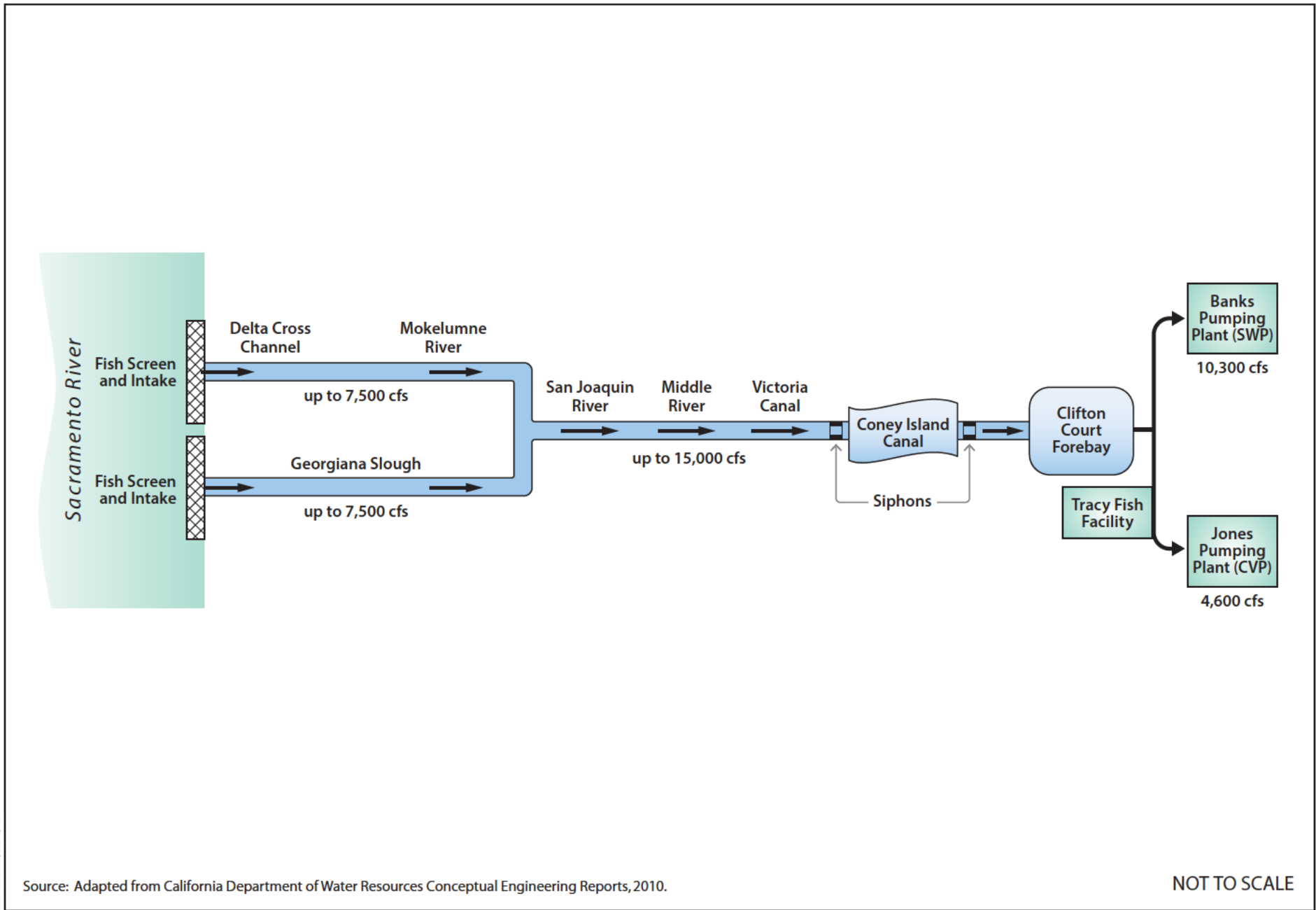
Figure 3-16
Through Delta/Separate Corridors Overview (Alternative 9)



BDCP EIR/EIS (9/3/13) TM

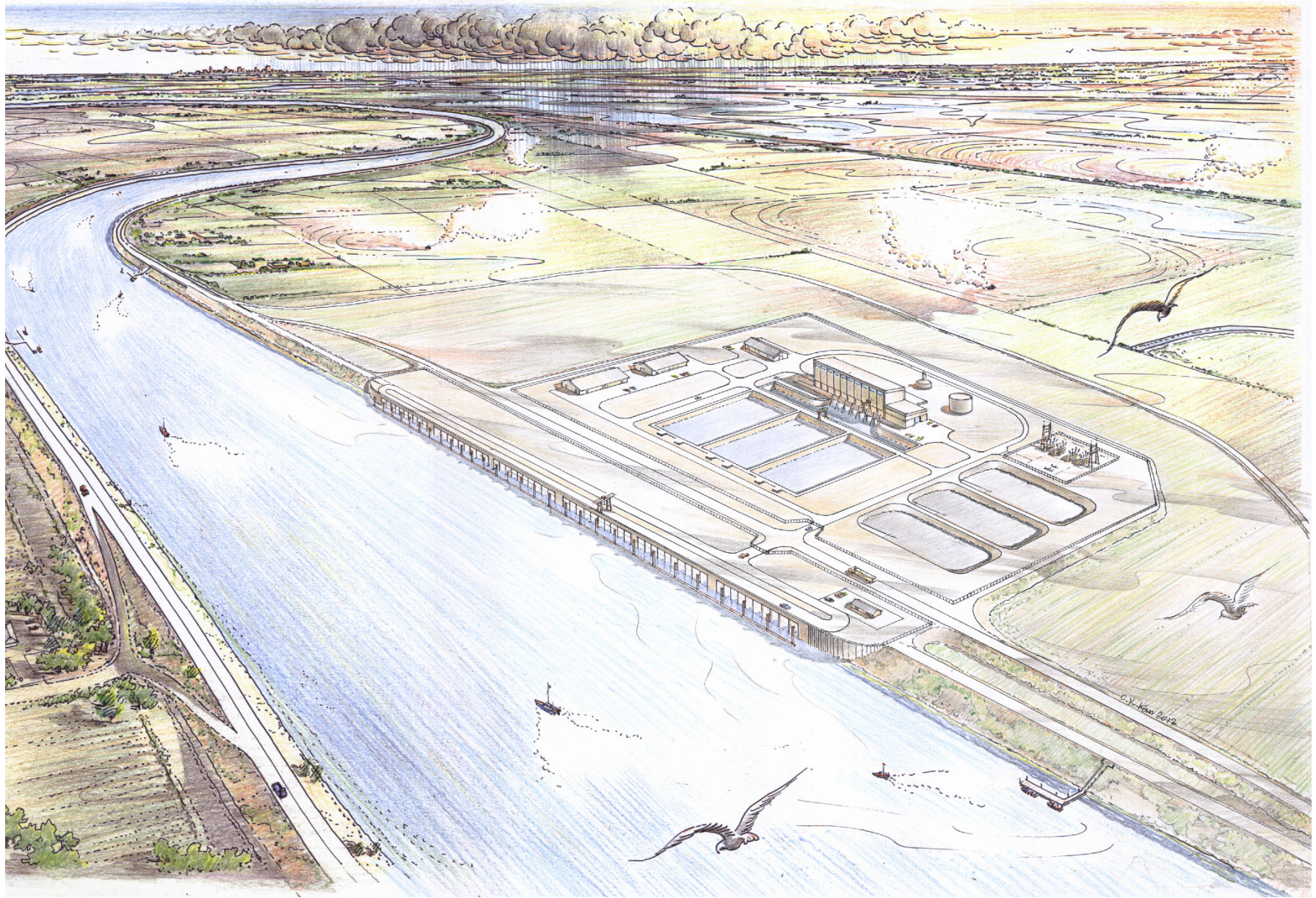
Source: Adapted from California Department of Water Resources Conceptual Engineering Reports, 2010.

Figure 3-17
Alternative 9 Fish Movement Corridor Schematic



BDCP EIR/EIS (9/3/13) TM

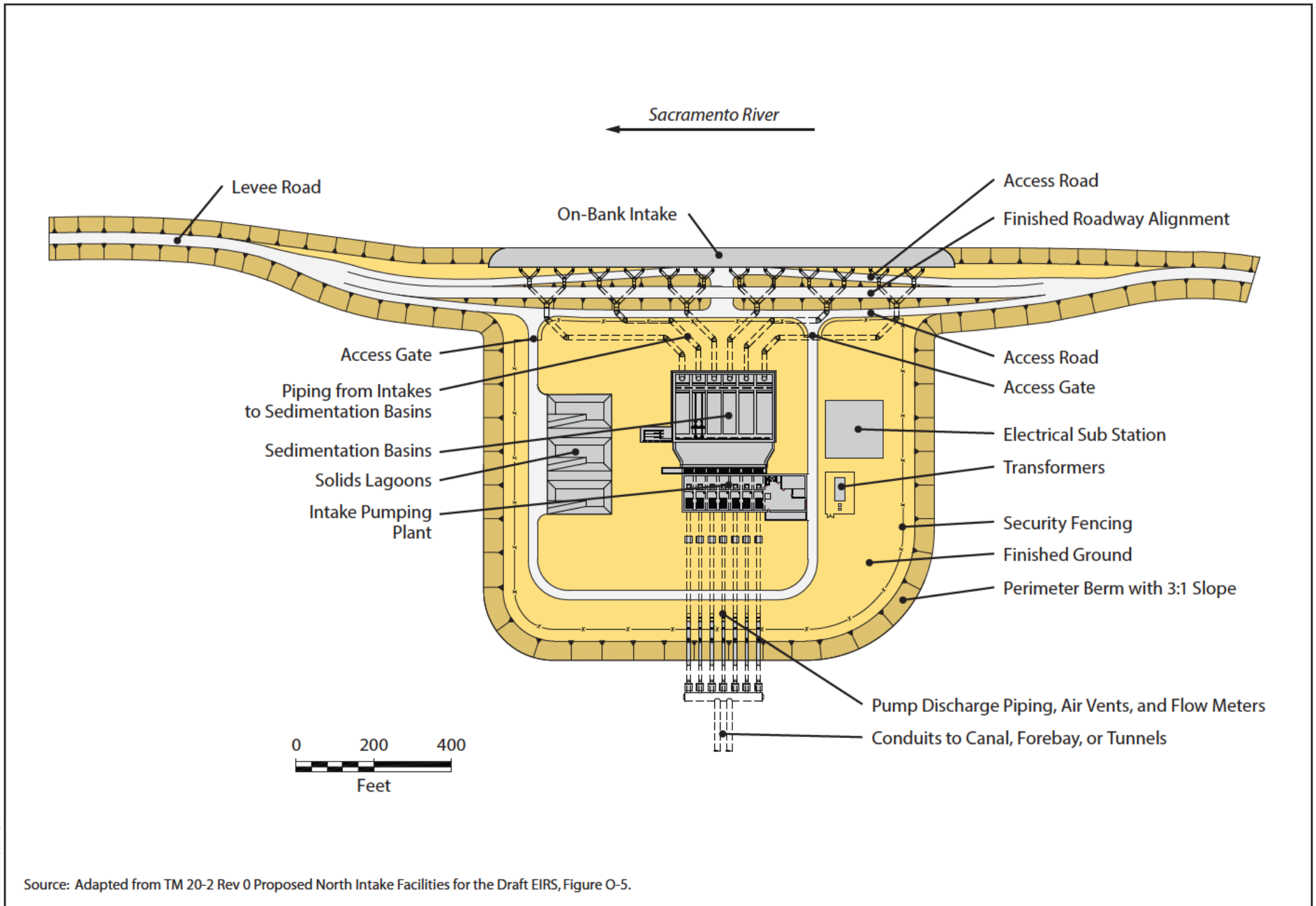
Figure 3-18
Alternative 9 Water Supply Corridor Schematic



BDOP EIR/EIS (9/3/13) TM

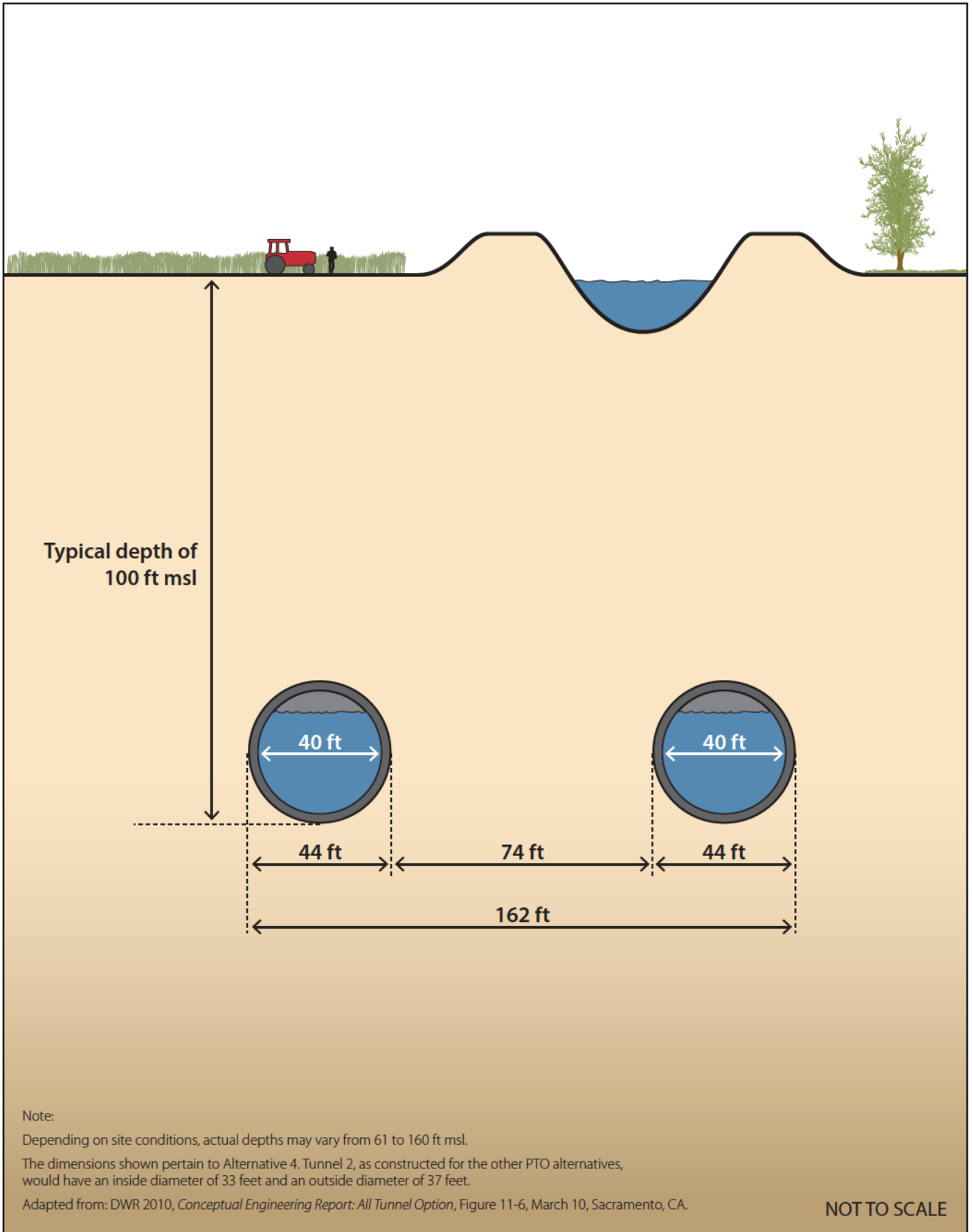
Source: Conceptual Engineering Report, Modified Pipeline/Tunnel Option.

Figure 3-19
Conceptual Rendering of On-Bank Intake Facility



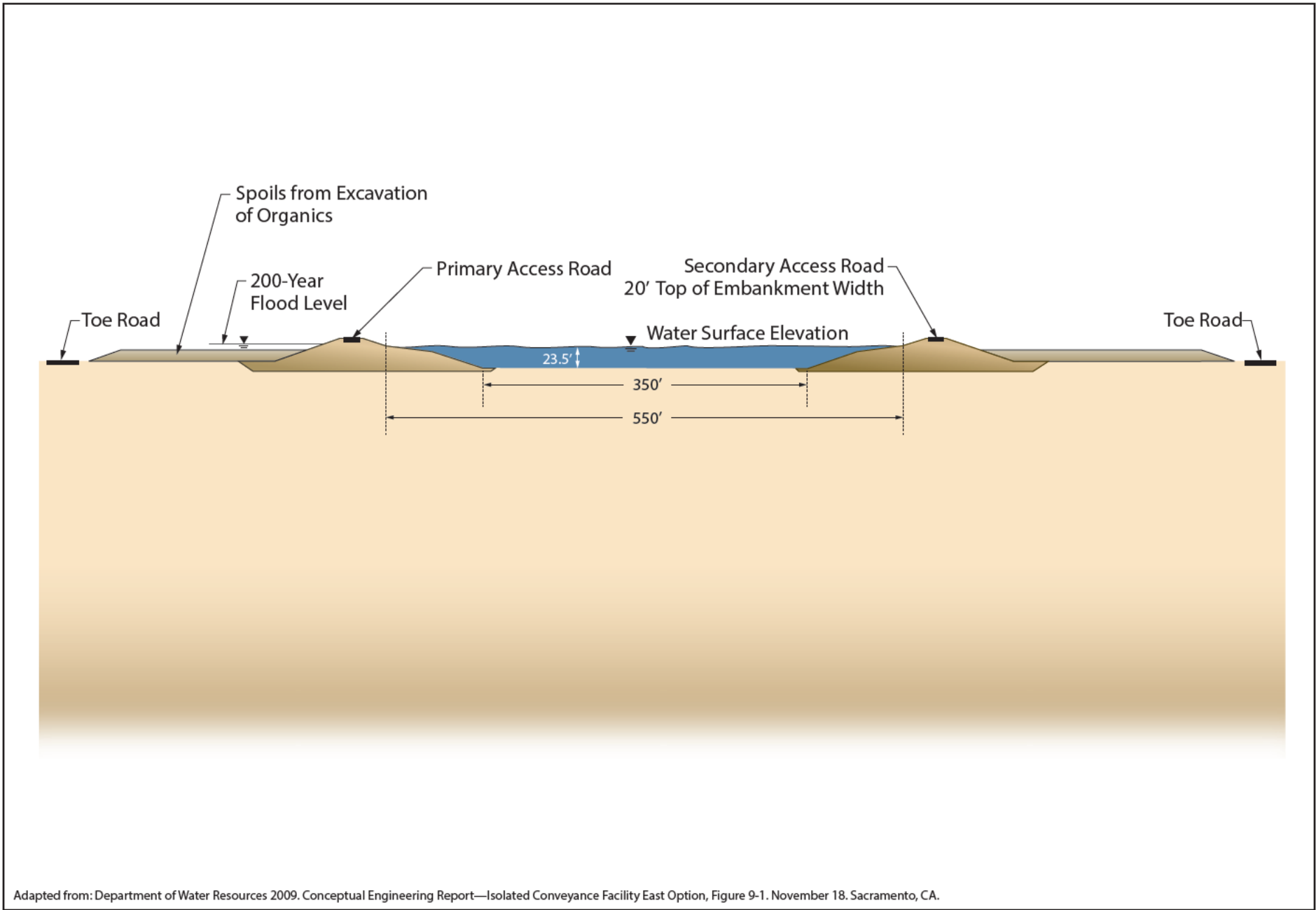
BDCP EIR/EIS (9/3/13) TM

Figure 3-20
Conceptual Intake and Pumping Plant Site



8DCP EIR/EIS (9/3/13) TM

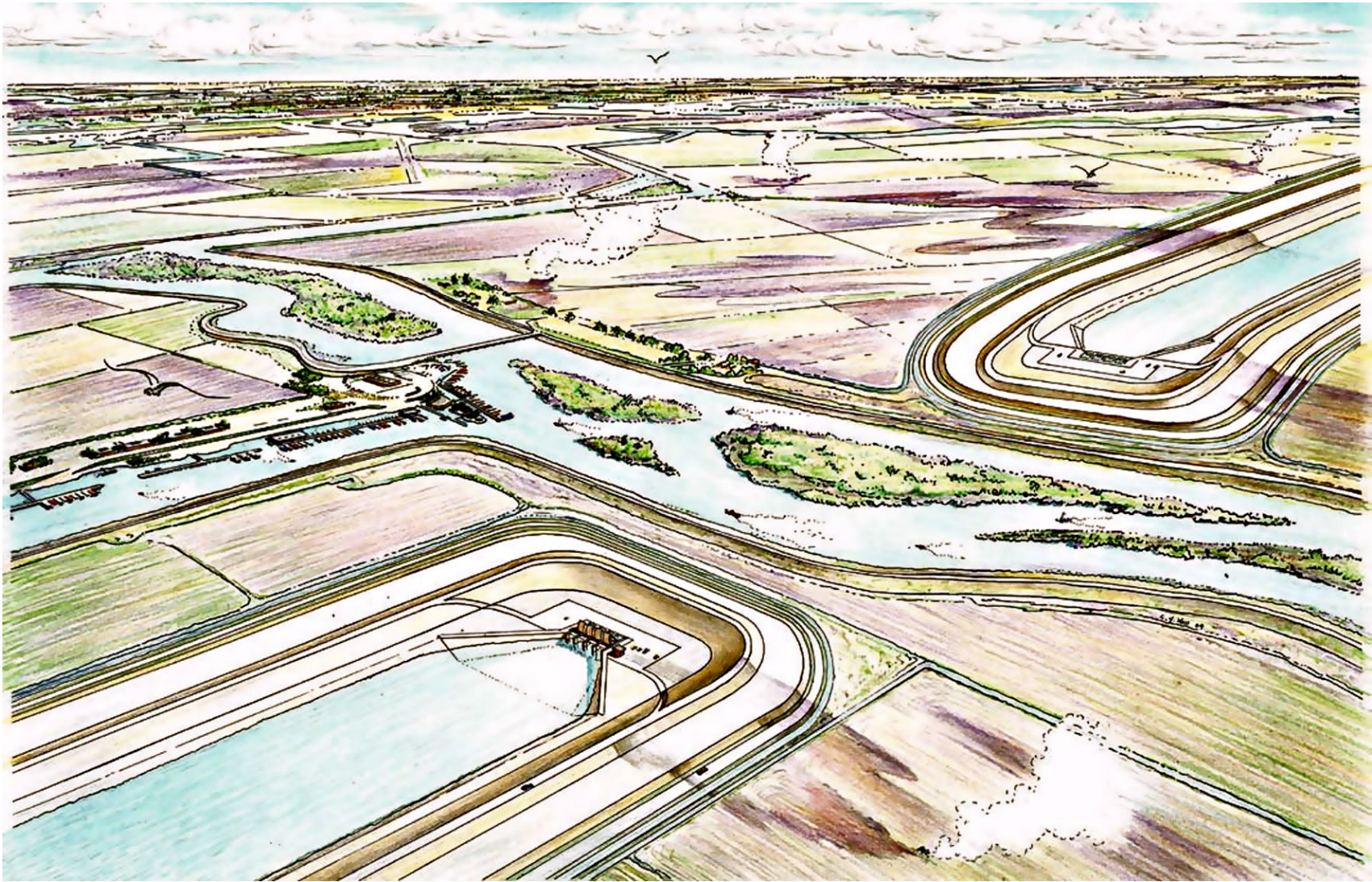
**Figure 3-21
Tunnel 2 Configuration**



BDCP/EIR/EIS (9/3/13) TM

Adapted from: Department of Water Resources 2009. Conceptual Engineering Report—Isolated Conveyance Facility East Option, Figure 9-1. November 18. Sacramento, CA.

Figure 3-22
Canal—Typical Cross Section



BDGP EIR/EIS (9/3/13).TIF

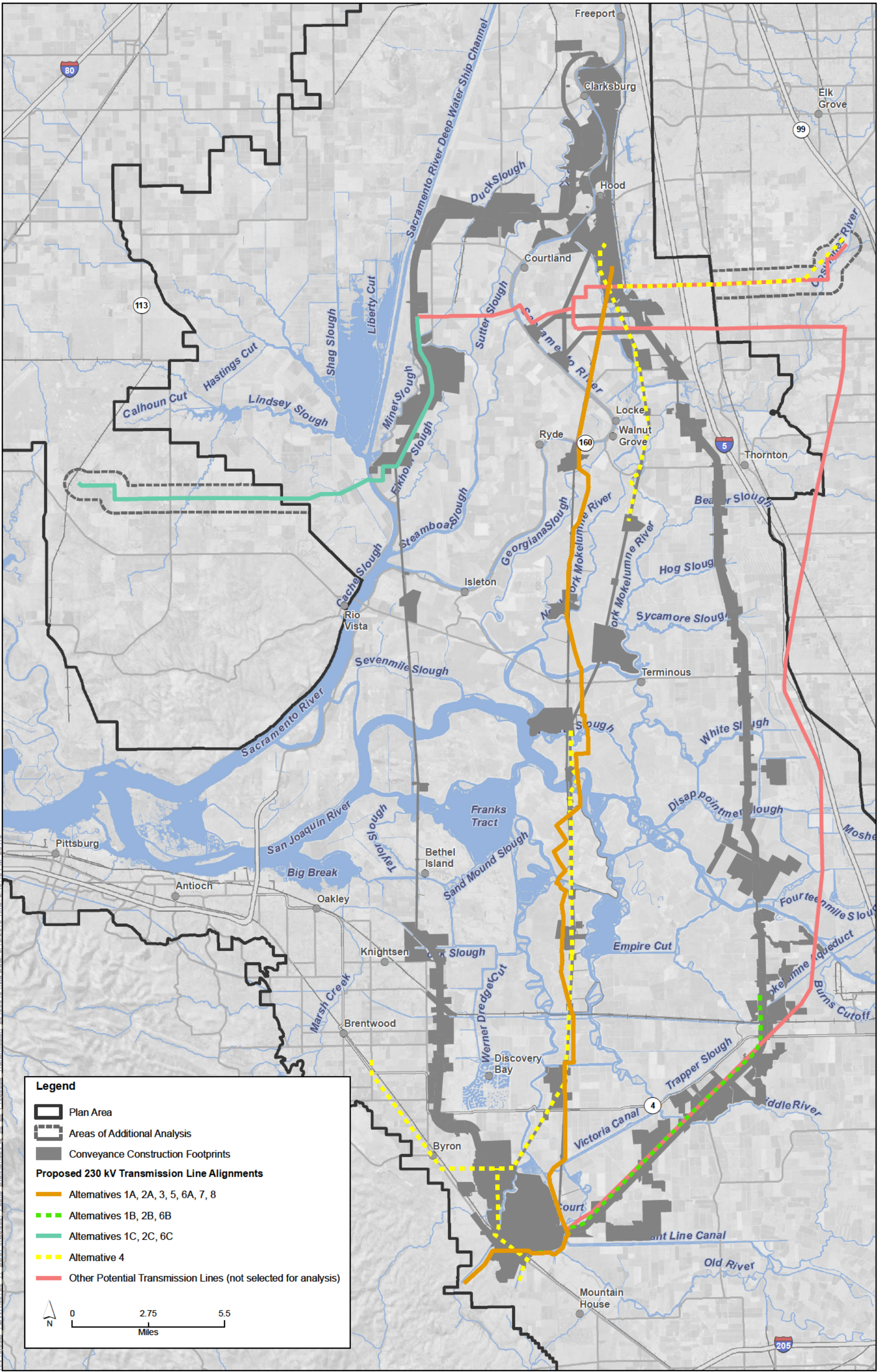
Source: CER - Isolated Conveyance Facility East Option Nov 2009, Figure 10-1.

Figure 3-23
Conceptual Rendering of Culvert Siphon



Source: CER - Isolated Conveyance Facility East Option Nov 2009, Figure 9-2.

Figure 3-24
Conceptual Rendering of Canal Segment



K:\Projects\1\DW\00728_11_BDC\Plan\mapdoc\Public_Draft\Ch03\Fig_03_25_Proposed_Transmission_20130918.mxd Date: 9/18/2013 Time: 2:15:13 PM 25110

Sources: Plan Area, ICF 2012; Area of Additional Analysis, ICF 2012; Constructability & Utility Linear Features (Rev 10b), DHCCP DWR 2012; Constructability & Utility Linear Features (Rev 2b), DHCCP DWR 2013; Constructability & Utility Linear Features (Rev 3b), DHCCP DWR 2013

Figure 3-25
Proposed Locations of Electrical Transmission Lines