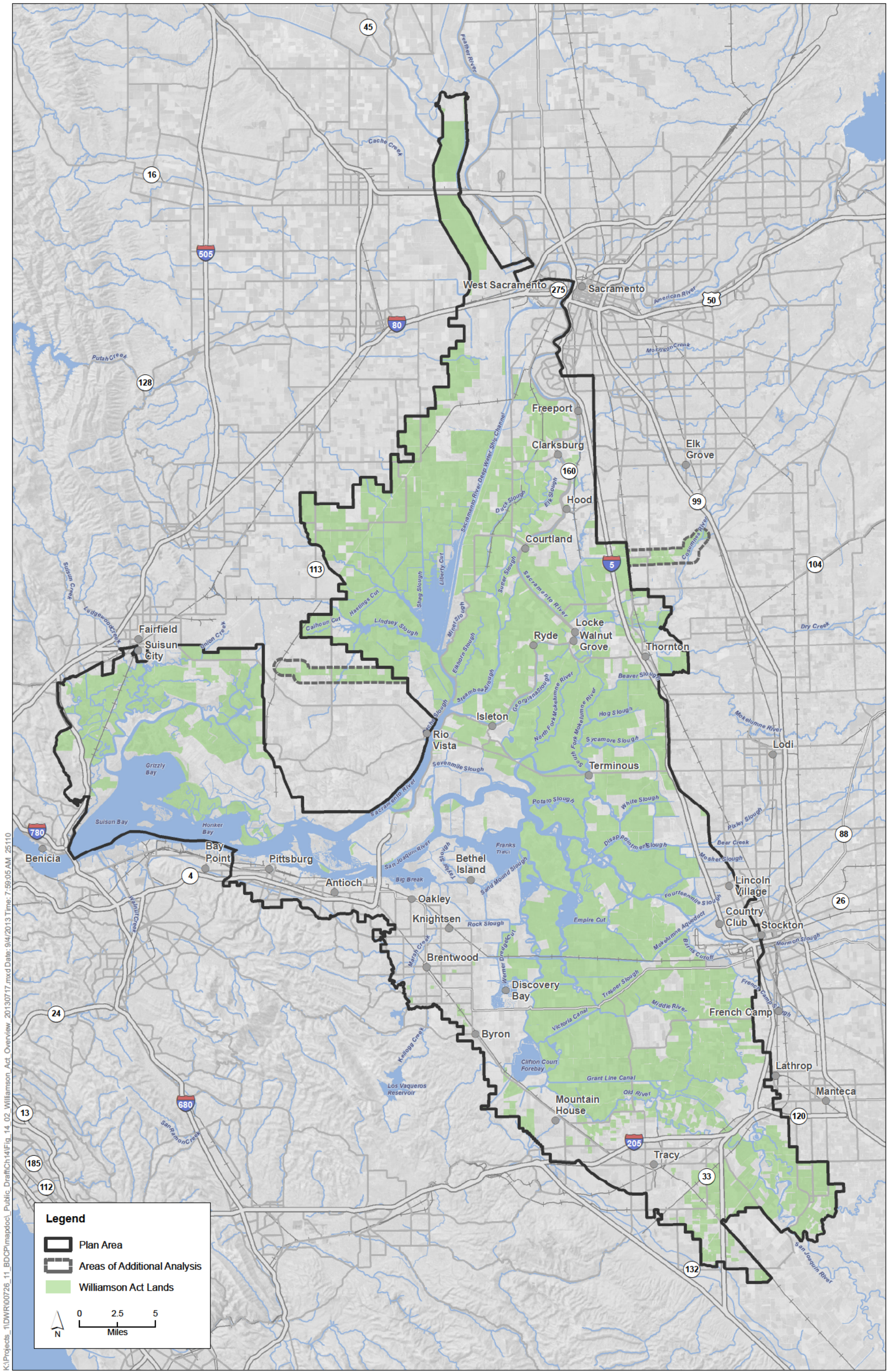


K:\Projects\_1\DW\00726\_11\_BDCP\mapdoc\_P\Public\_Draft\Ch14\Fig\_14\_01\_Agriculture\_Overview\_20130717.mxd Date: 9/4/2013 Time: 7:57:02 AM 25/110

Sources: Plan Area, ICF 2012; Area of Additional Analysis, ICF 2012; Type of Agriculture, BDCP\_Landuse\_Crop, HDR 2011.

**Figure 14-1**  
Overview of Agricultural Type





K:\Projects\_1\DW\00726\_11\_BDCP\mapdoc\Public Draft\Ch14\Fig\_14\_02\_Williamson Act Overview\_20130717.mxd Date: 9/4/2013 Time: 7:59:05 AM 25110

**Legend**

- Plan Area
- Areas of Additional Analysis
- Williamson Act Lands

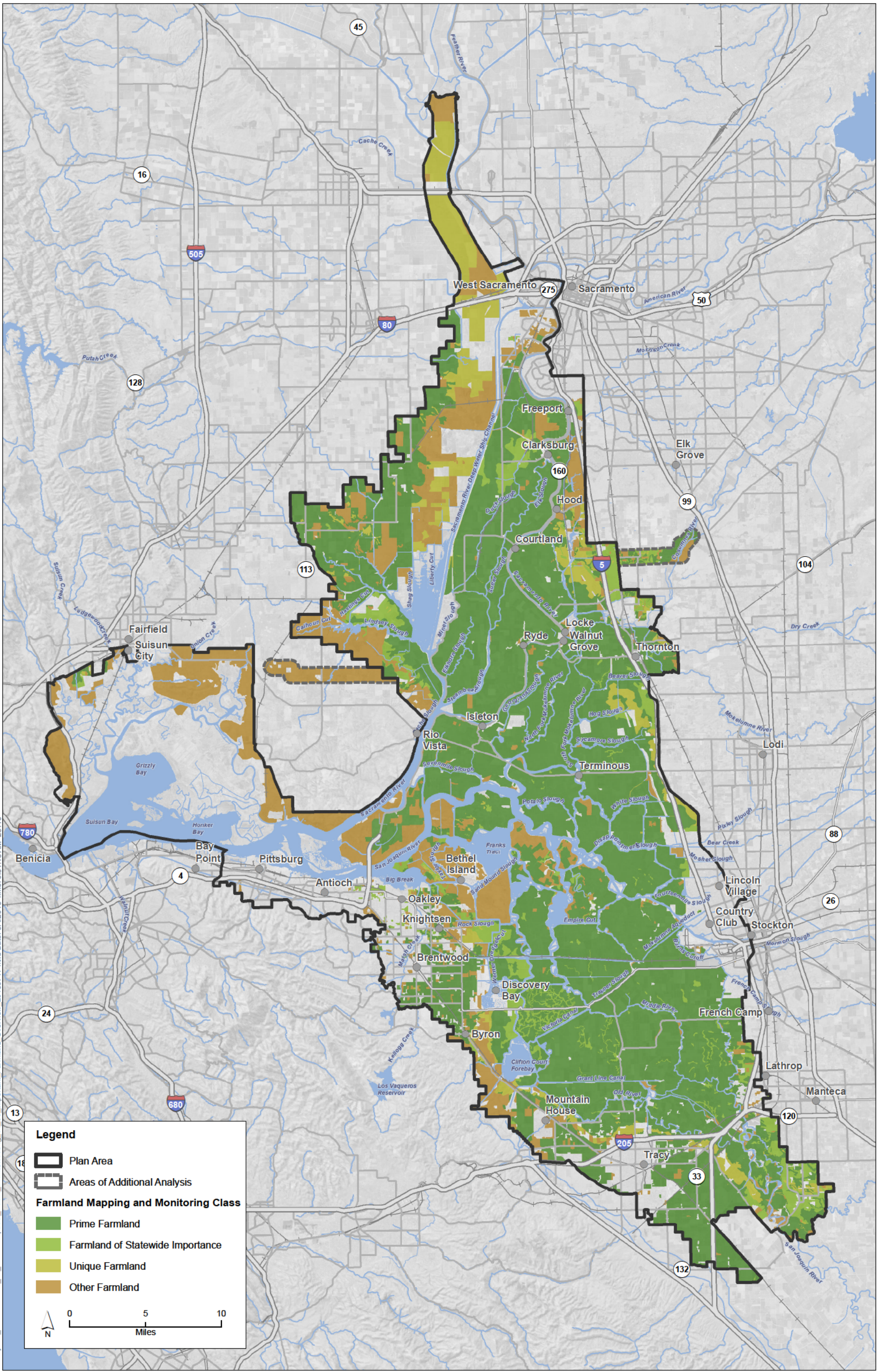
0 2.5 5  
Miles

N

Sources: Plan Area, ICF 2012; Area of Additional Analysis, ICF 2012; Williamson Act, Dept. of Conservation 2007 & 2009.

**Figure 14-2**  
**Lands under Williamson Act Contracts**





K:\Projects\_1\DW\00726\_11\_BDCP\mapdoc\Public\_Draft\Ch14\Fig\_14\_03\_Important\_Farmland\_Overview\_20130717.mxd Date: 9/4/2013 Time: 8:01:16 AM 25110

Sources: Plan Area, ICF 2012; Area of Additional Analysis, ICF 2012; FMMP, 2008 & 2010.

**Figure 14-3**  
**Important Farmland Overview**