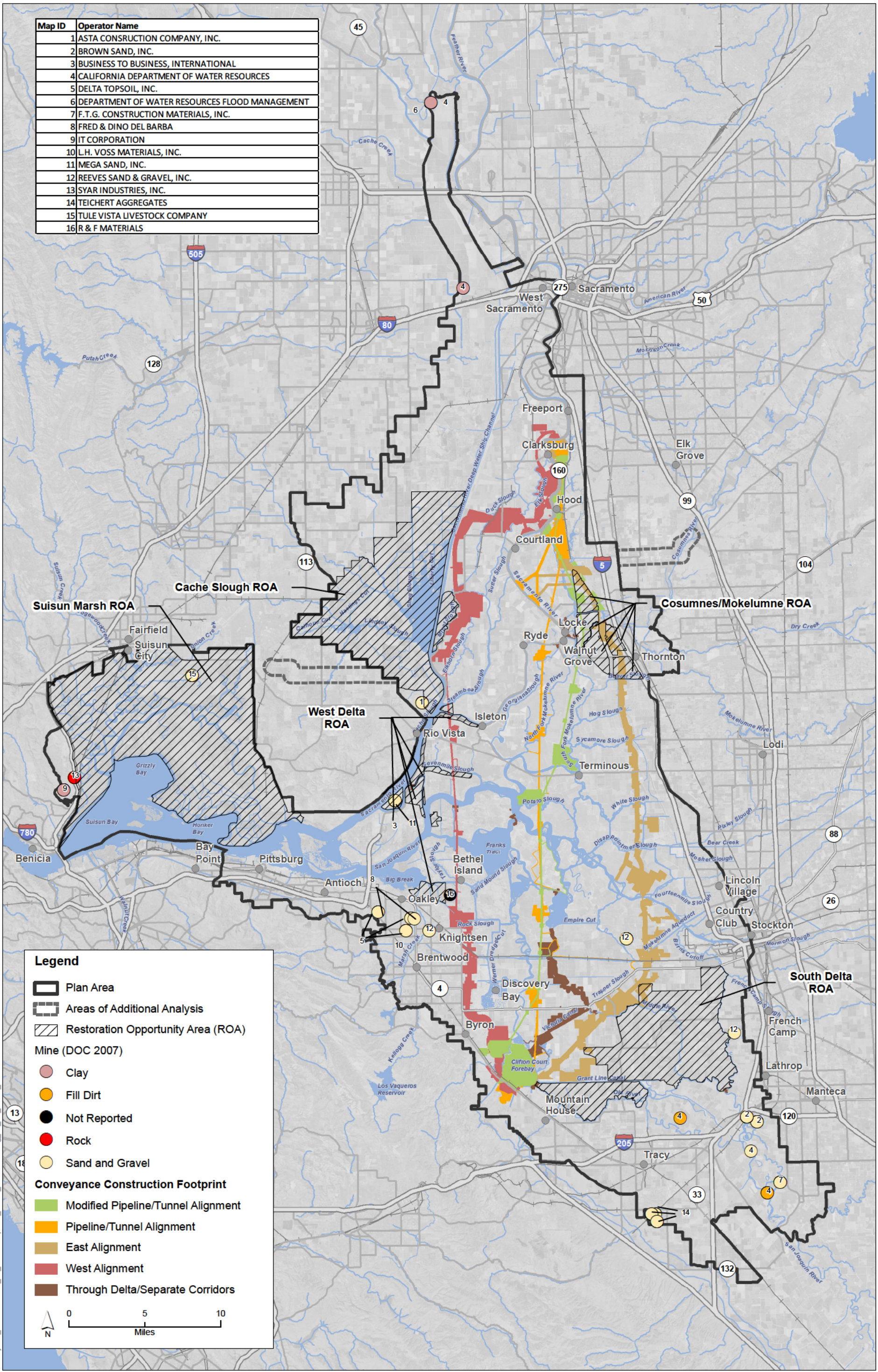


| Map ID | Operator Name |
|--------|--|
| 1 | ASTA CONSTRUCTION COMPANY, INC. |
| 2 | BROWN SAND, INC. |
| 3 | BUSINESS TO BUSINESS, INTERNATIONAL |
| 4 | CALIFORNIA DEPARTMENT OF WATER RESOURCES |
| 5 | DELTA TOPSOIL, INC. |
| 6 | DEPARTMENT OF WATER RESOURCES FLOOD MANAGEMENT |
| 7 | F.T.G. CONSTRUCTION MATERIALS, INC. |
| 8 | FRED & DINO DEL BARBA |
| 9 | IT CORPORATION |
| 10 | L.H. VOSS MATERIALS, INC. |
| 11 | MEGA SAND, INC. |
| 12 | REEVES SAND & GRAVEL, INC. |
| 13 | SYAR INDUSTRIES, INC. |
| 14 | TEICHERT AGGREGATES |
| 15 | TULE VISTA LIVESTOCK COMPANY |
| 16 | R & F MATERIALS |



Legend

- Plan Area
- Areas of Additional Analysis
- Restoration Opportunity Area (ROA)

Mine (DOC 2007)

- Clay
- Fill Dirt
- Not Reported
- Rock
- Sand and Gravel

Conveyance Construction Footprint

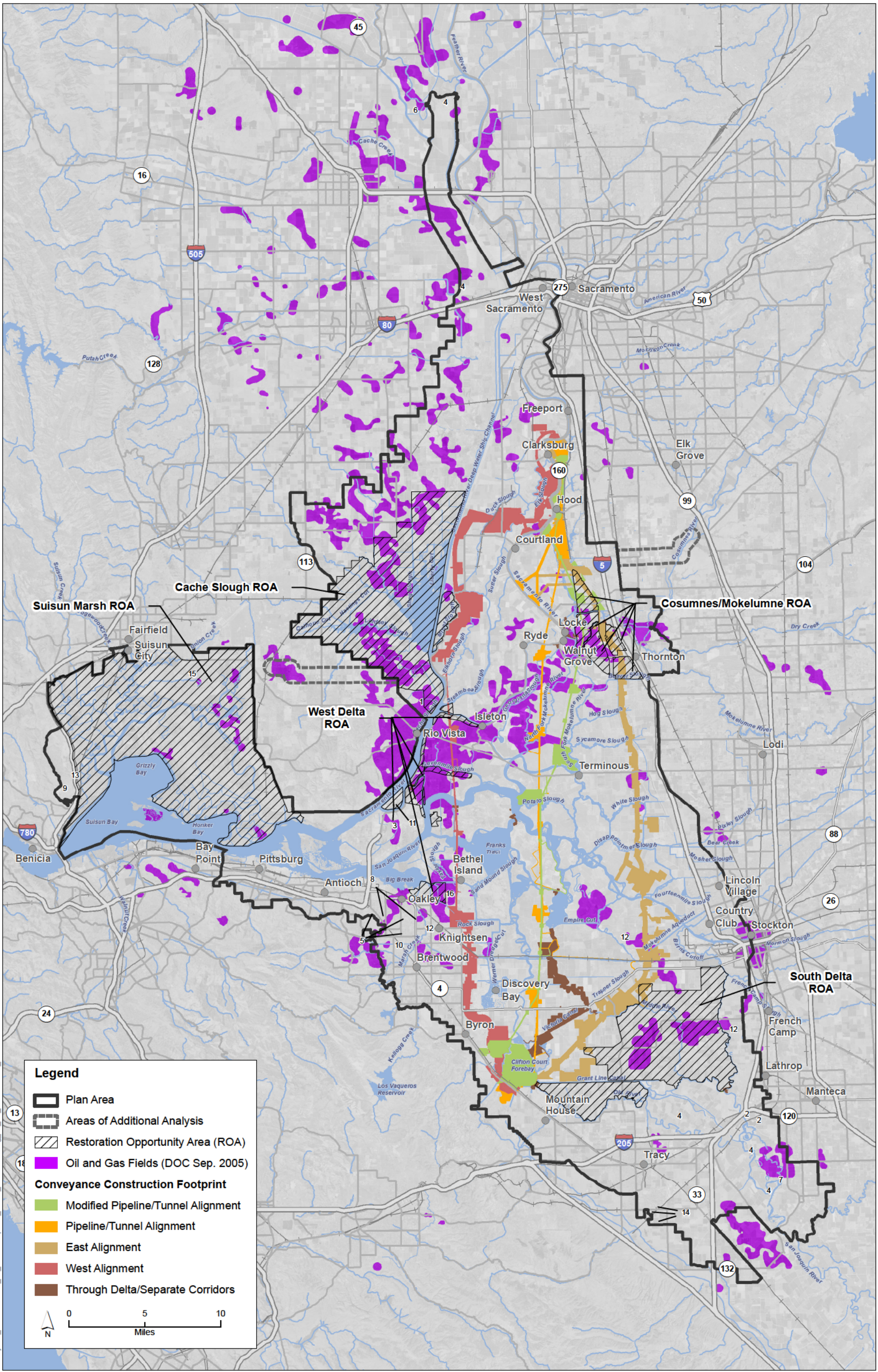
- Modified Pipeline/Tunnel Alignment
- Pipeline/Tunnel Alignment
- East Alignment
- West Alignment
- Through Delta/Separate Corridors

0 5 10 Miles

K:\Projects_1\DW\00726_11_BDCP\mapdoc\Public_Draft\Ch26\Fig_26_01_Mines_20130930.mxd Date: 9/30/2013 Time: 12:04:44 PM 25110

Sources: Plan Area, ICF 2012; Area of Additional Analysis, ICF 2012; Mines, DOC/AECOM, 2007; ROA, SAIC 2010; Constructability (Rev 10), DHCCP DWR 2012; Constructability (Rev 2b), DHCCP DWR 2013 Constructability (Rev 3b), DHCCP DWR 2012;

Figure 26-1
Active Mines in the Plan Area



K:\Projects_1\DW\00726_11_BDCP\mapdoc_Public_Draft\Ch26\Fig_26_02_OilGasFields_20130722.mxd Date: 9/18/2013 Time: 8:33:15 AM 25110

Sources: Plan Area, ICF 2012; Area of Additional Analysis, ICF 2012; Oil/Gas, DOC/AECOM, Sep. 2005; ROA, SAIC 2010; Constructability (Rev 10), DHCCP DWR 2012; Constructability (Rev 2b), DHCCP DWR 2013; Constructability (Rev 3b), DHCCP DWR 2012;

Figure 26-2
Oil and Gas Fields in the Plan Area Vicinity