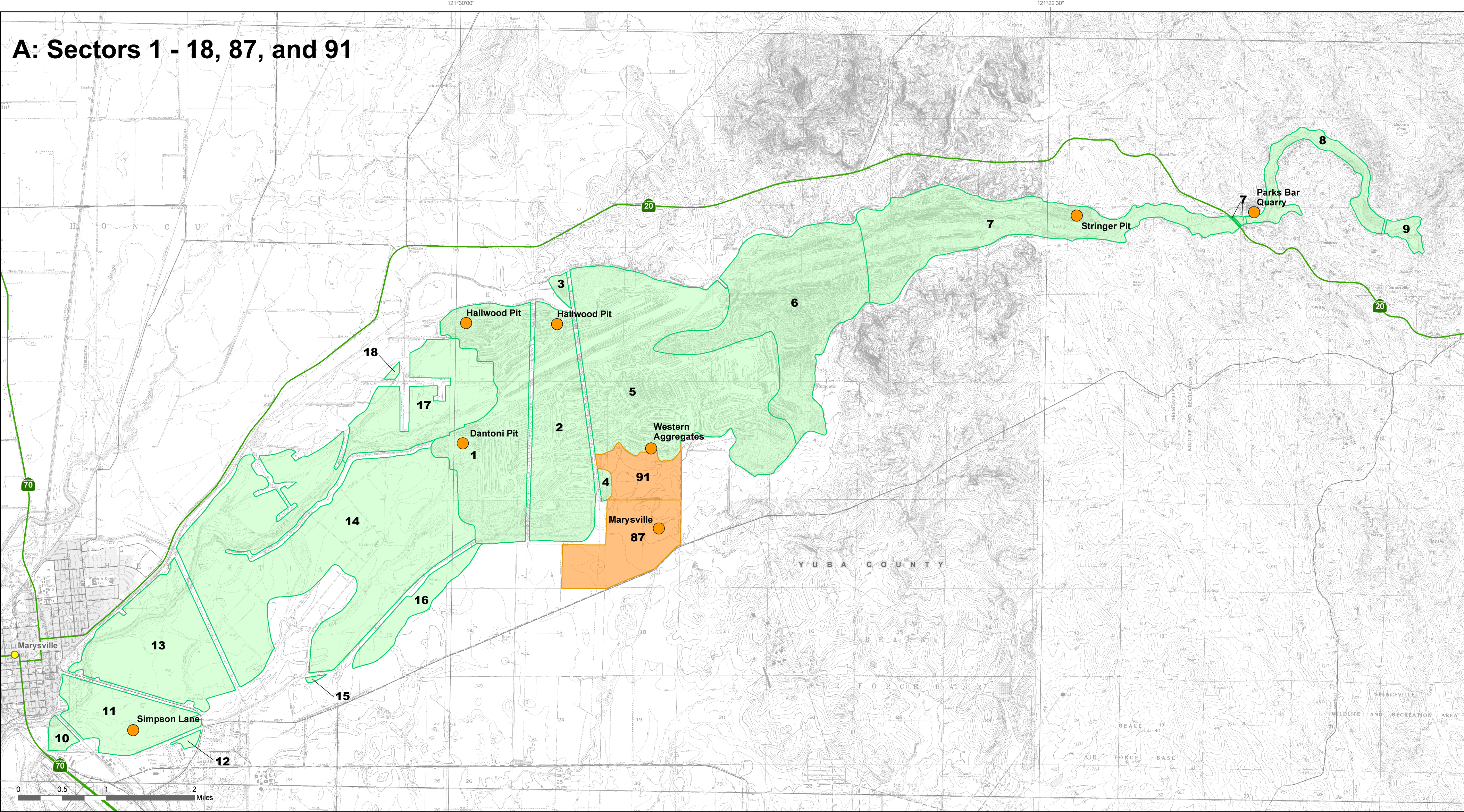


# California Geological Survey

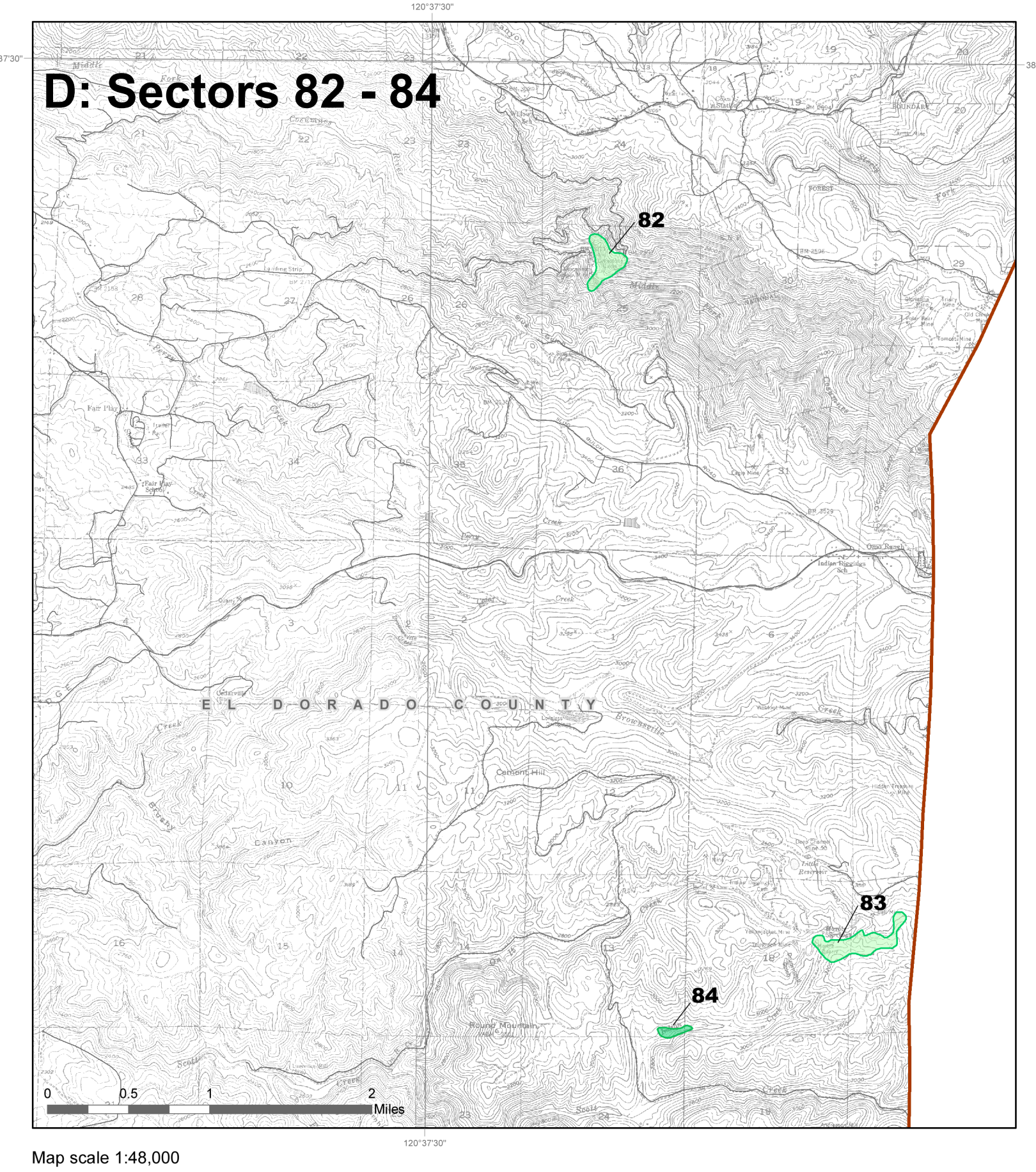
## Resource Sector Map for Concrete Aggregate in the Greater Sacramento Area Production-Consumption Region

By Matt D. O'Neal and Fred W. Gius  
2018

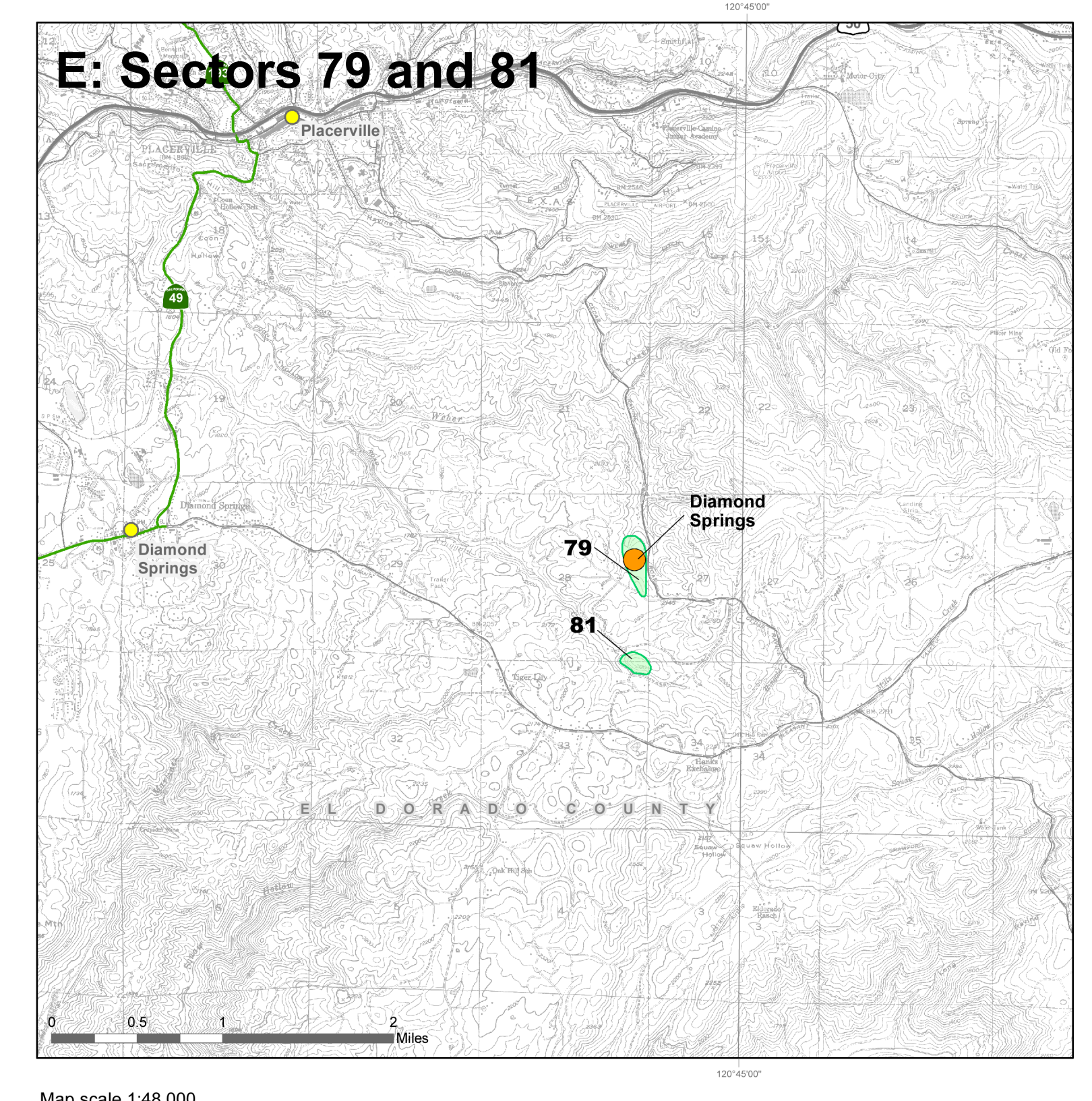
**A: Sectors 1 - 18, 87, and 91**



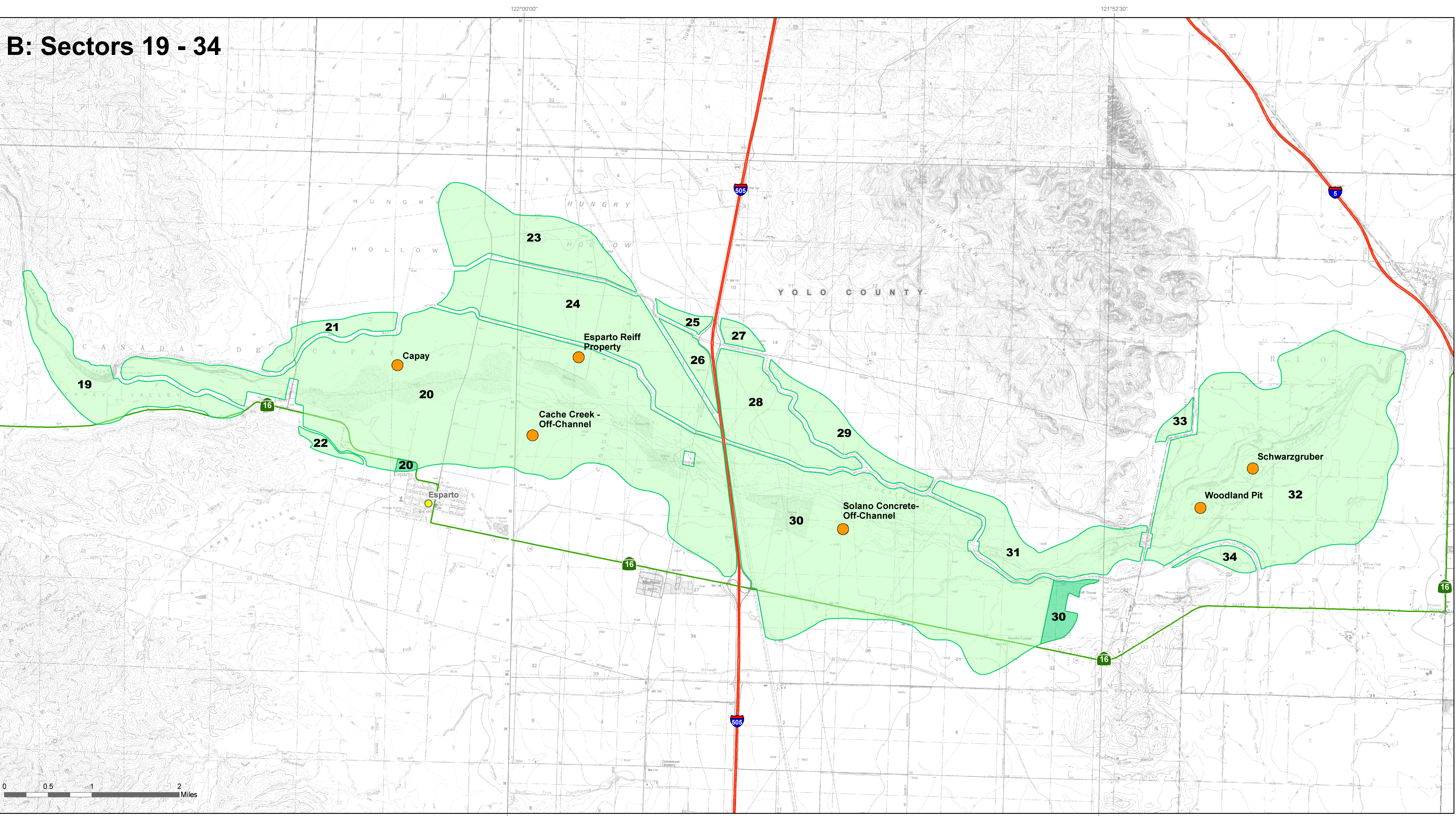
**D: Sectors 82 - 84**



**E: Sectors 79 and 81**



**B: Sectors 19 - 34**



- Sector depleted by mining, lost to incompatible land uses, or determined to no longer be significant upon re-evaluation.
- New sector containing regionally significant concrete aggregate resources
- Sector containing regionally significant concrete aggregate resources
- Mine
- Greater Sacramento Area P-C Region
- County
- City
- Interstate
- State Highway
- U.S. Highway
- Road

**C: Sectors 55 - 76, 88, 90, 92, and 93**

