

California Geological Survey

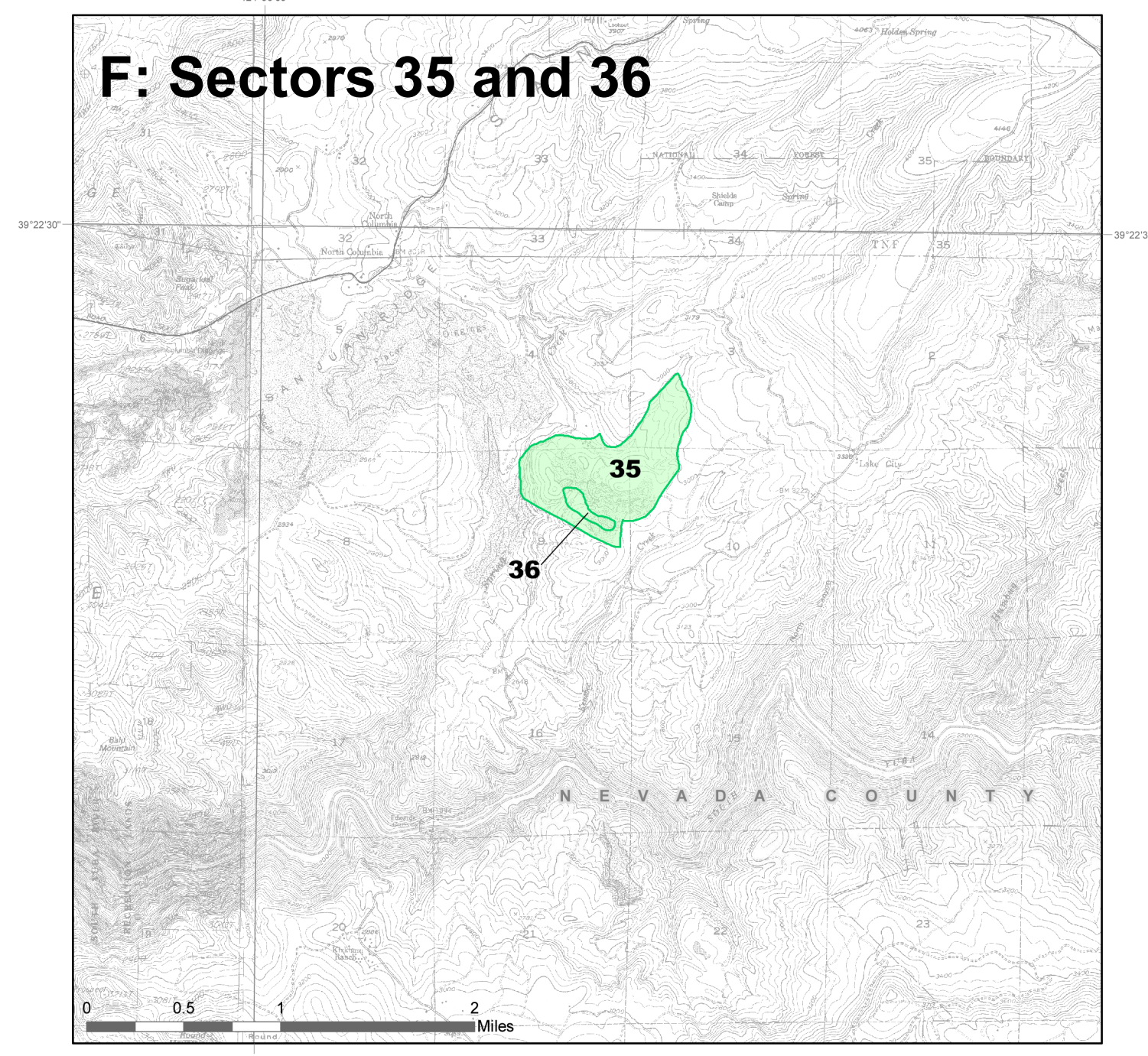
Resource Sector Map for Concrete Aggregate in the Greater Sacramento Area Production-Consumption Region

By Matt D. O'Neal and Fred W. Gius
2018

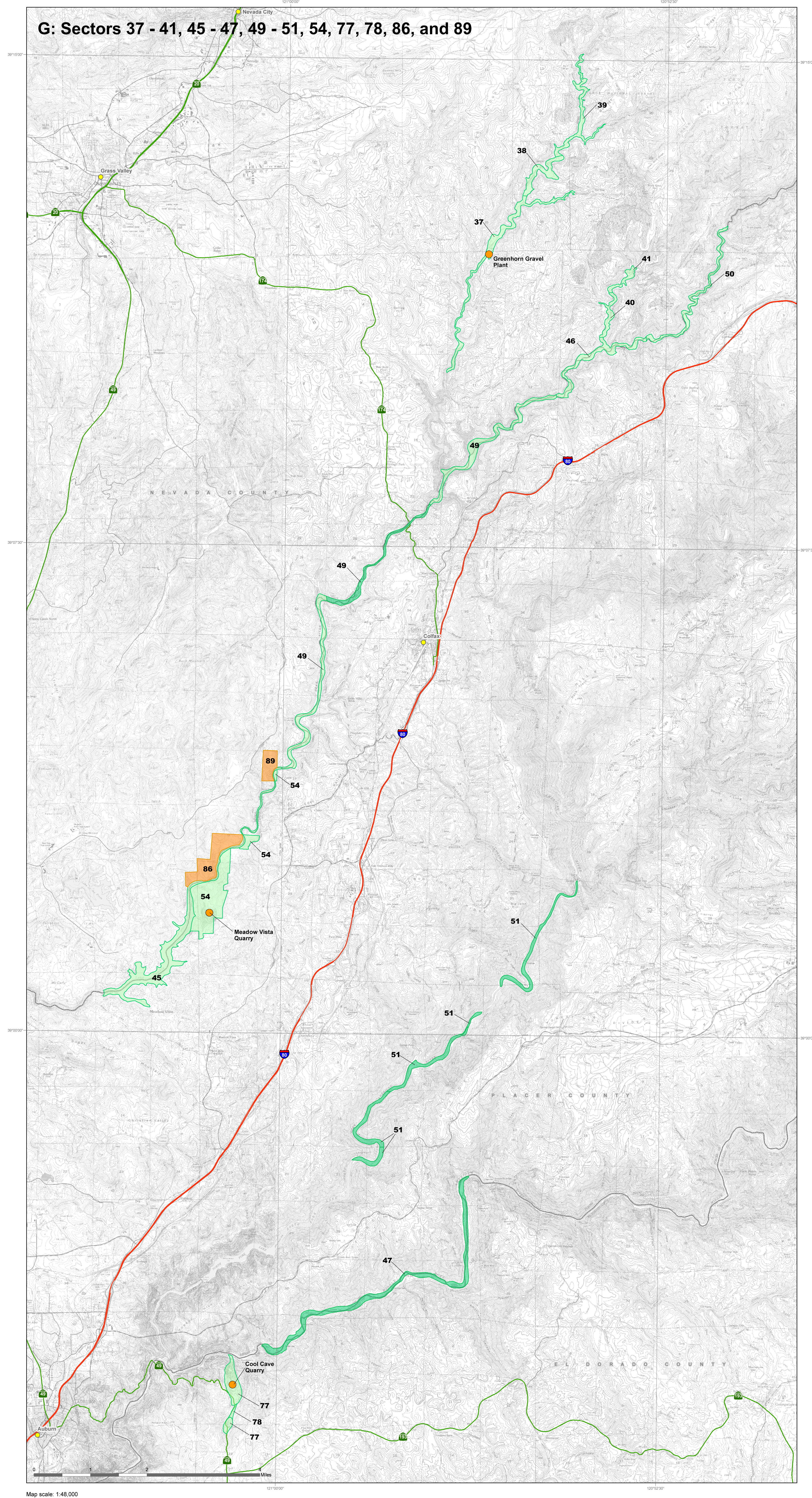
- Sector depleted by mining, lost to incompatible land uses, or determined to no longer be significant upon re-evaluation.
- New sector containing regionally significant concrete aggregate resources
- Sector containing regionally significant concrete aggregate resources
- Mine
- Greater Sacramento Area P-C Region
- County
- City
- Interstate
- State Highway
- U.S. Highway
- Road

Projection: State Albers (feet)
Datum: NAD 83

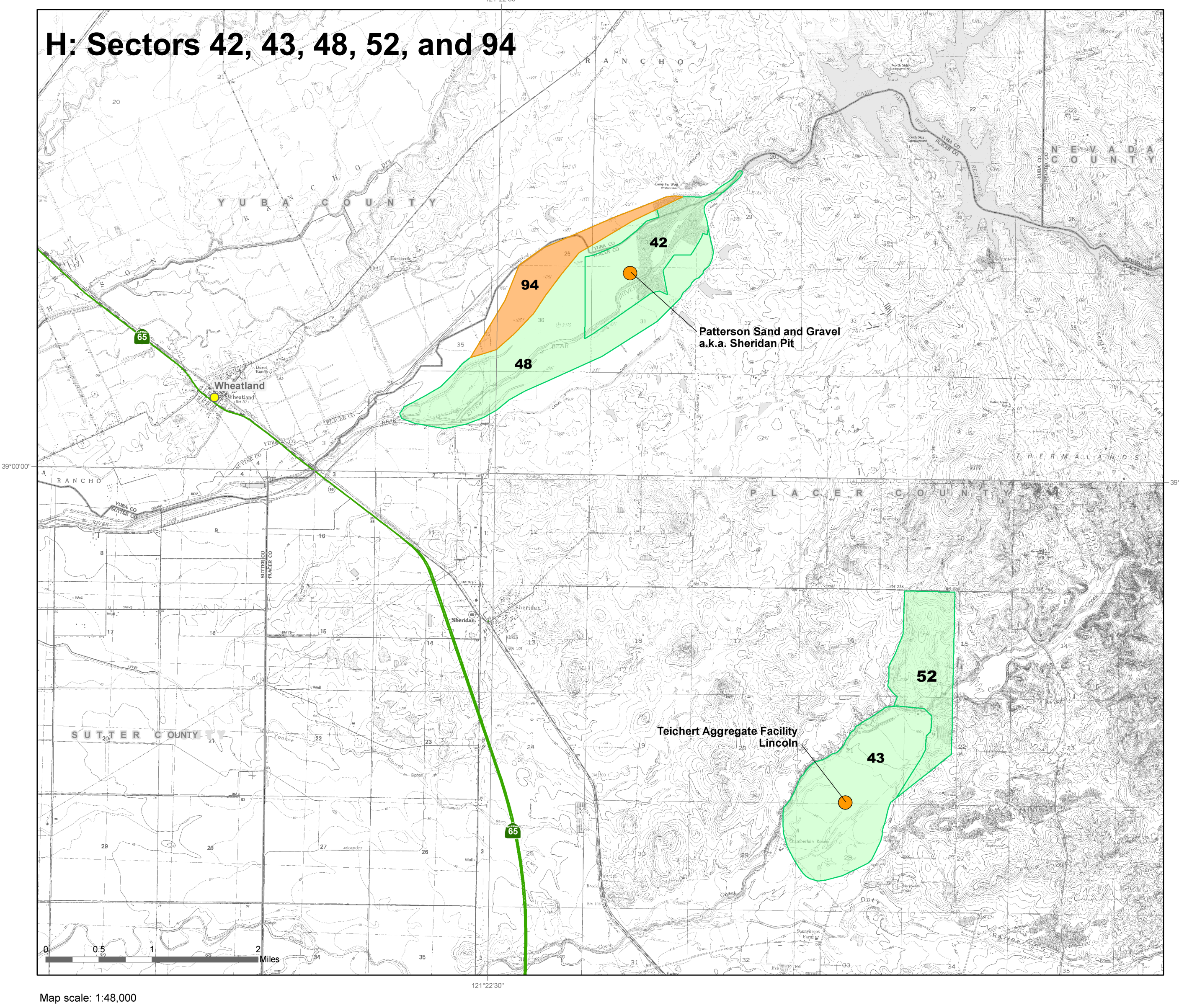
F: Sectors 35 and 36



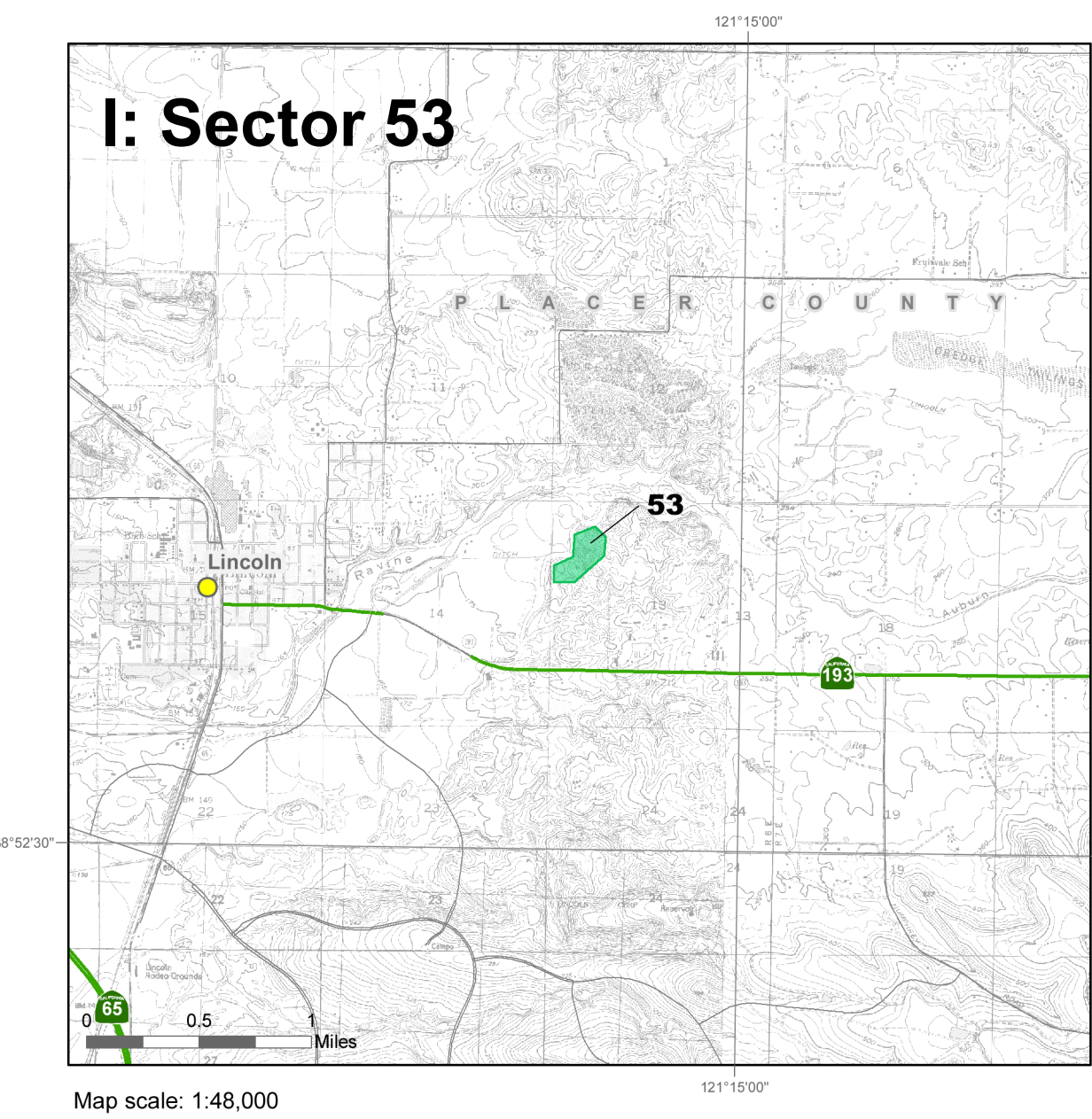
G: Sectors 37 - 41, 45 - 47, 49 - 51, 54, 77, 78, 86, and 89



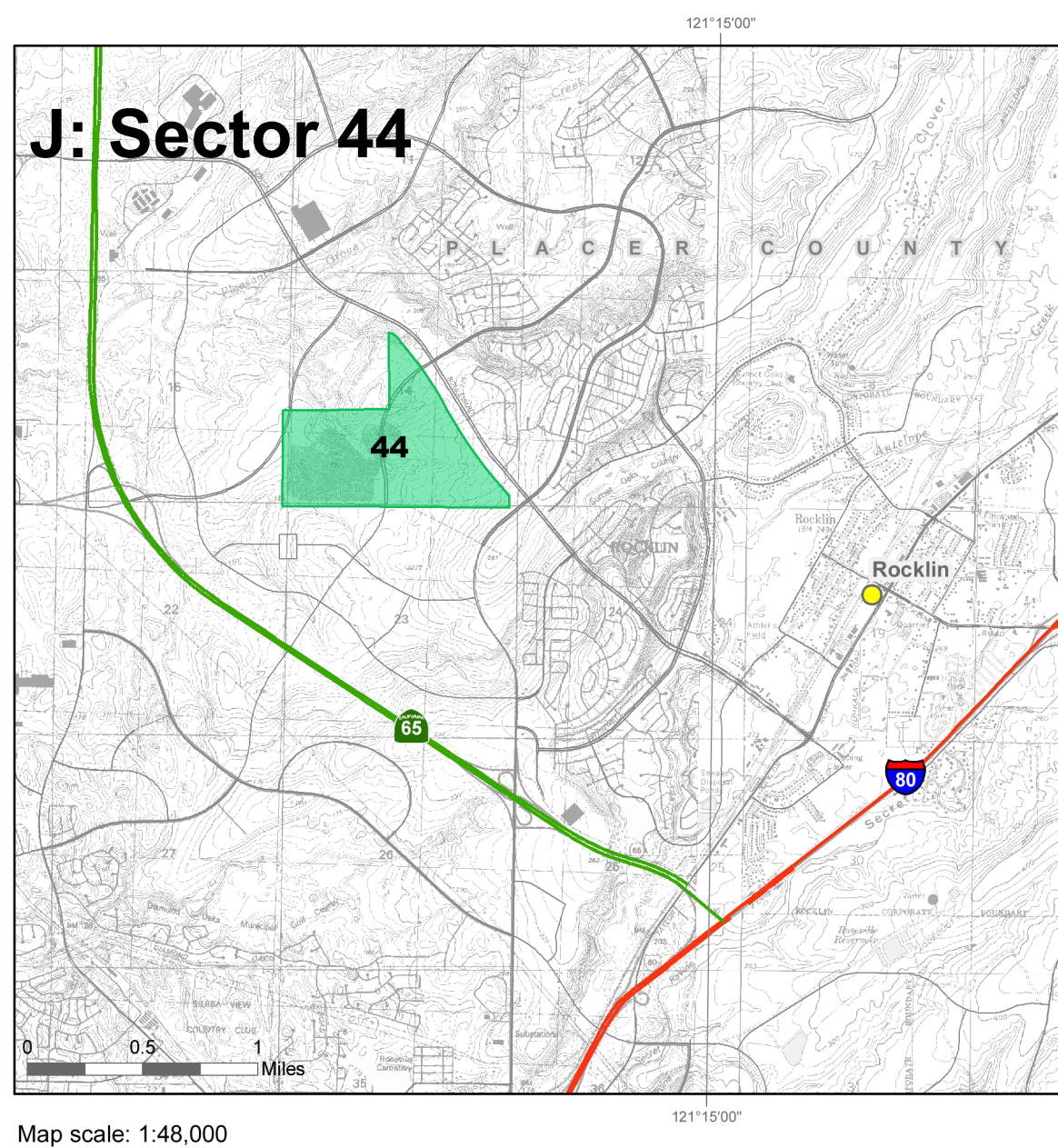
H: Sectors 42, 43, 48, 52, and 94



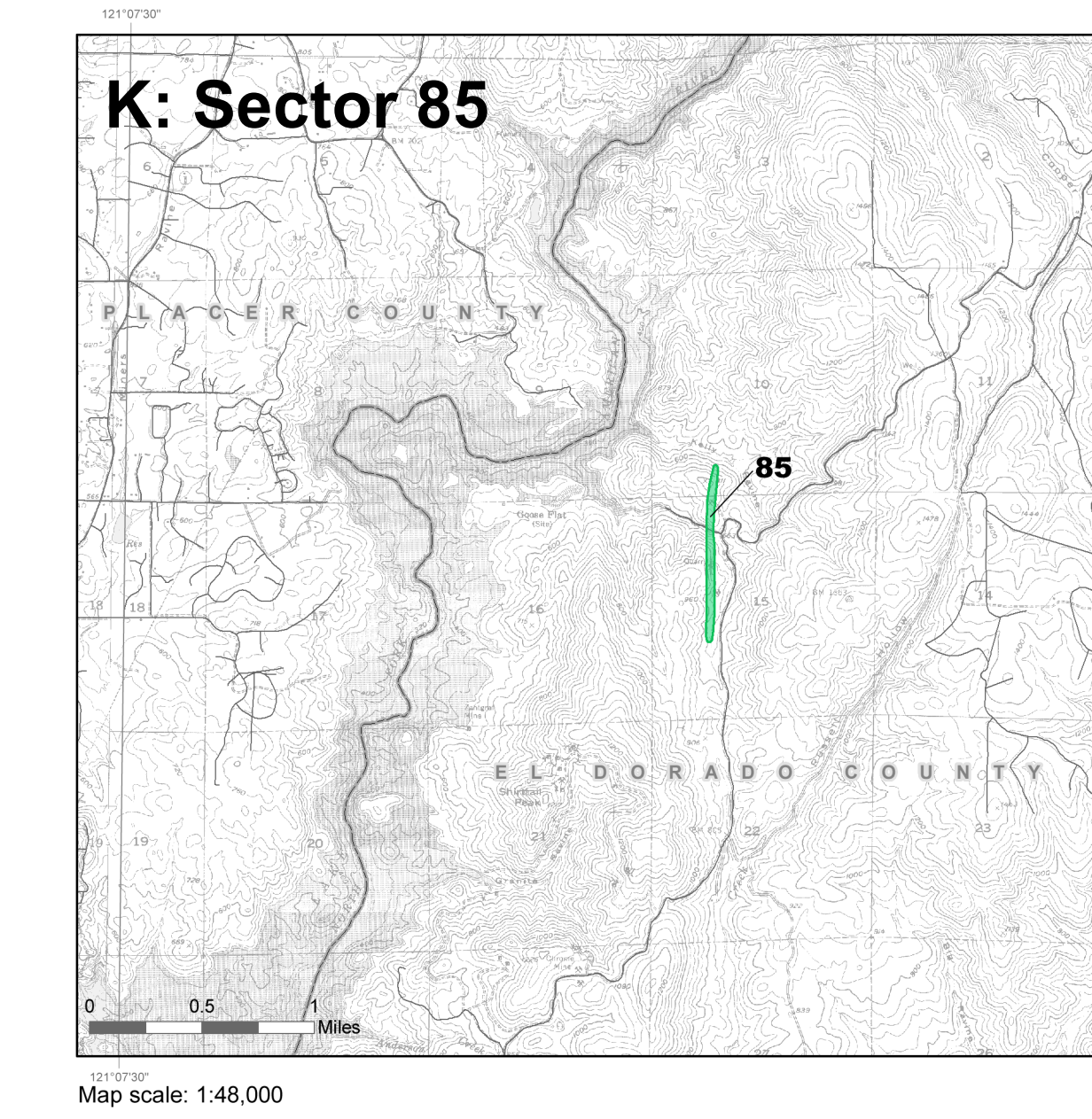
I: Sector 53



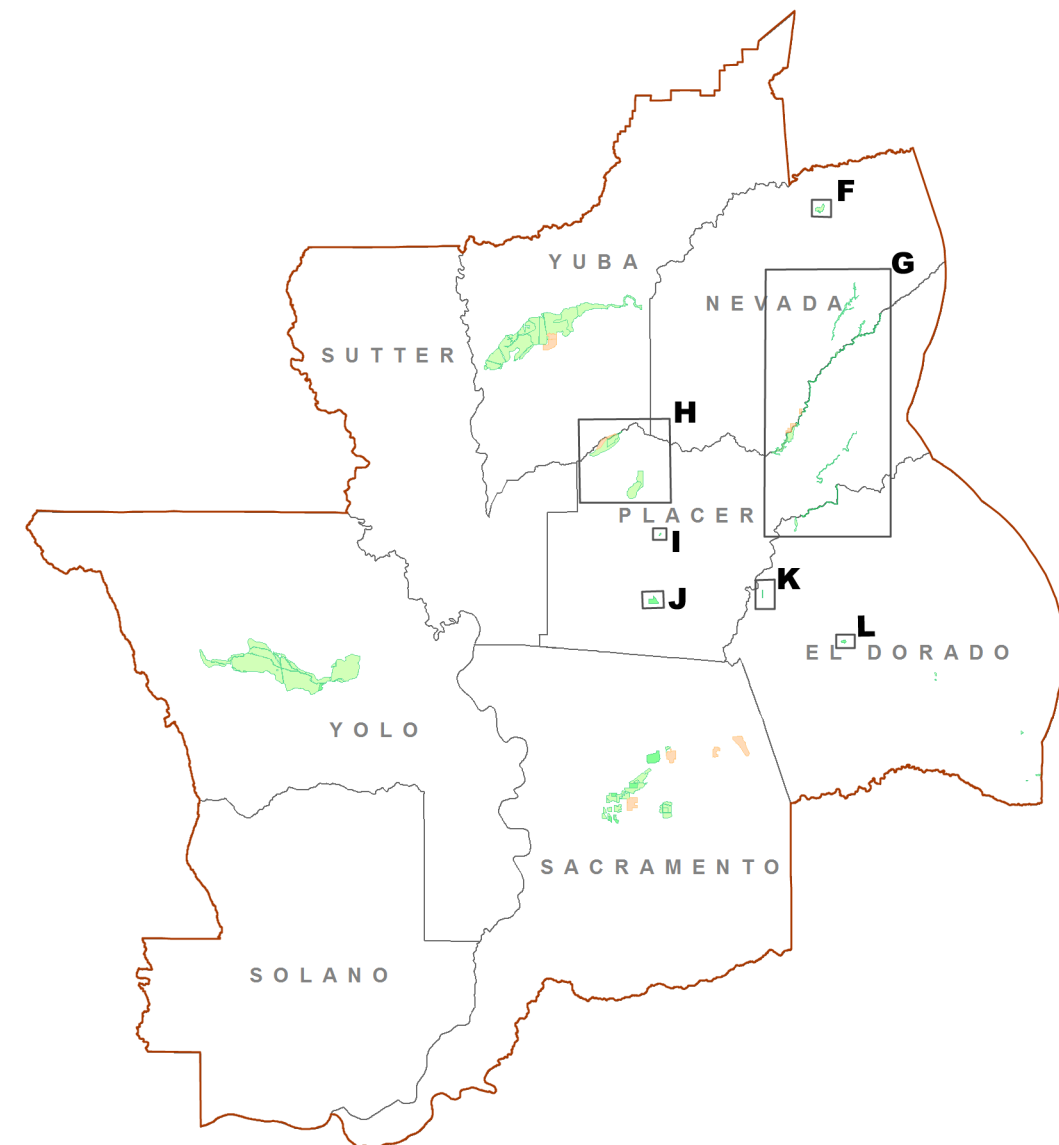
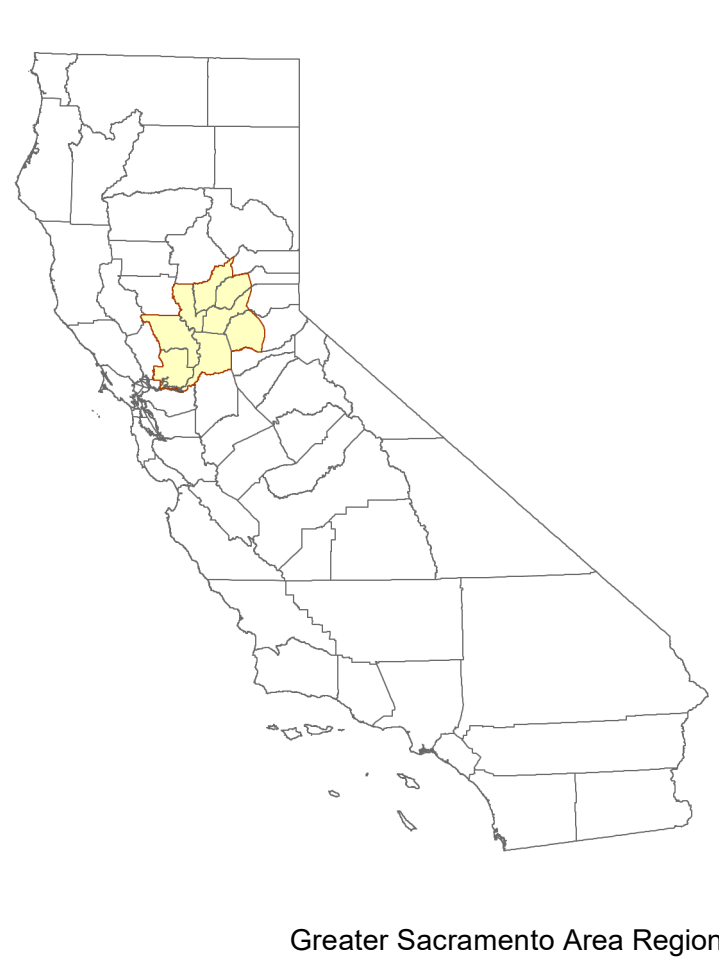
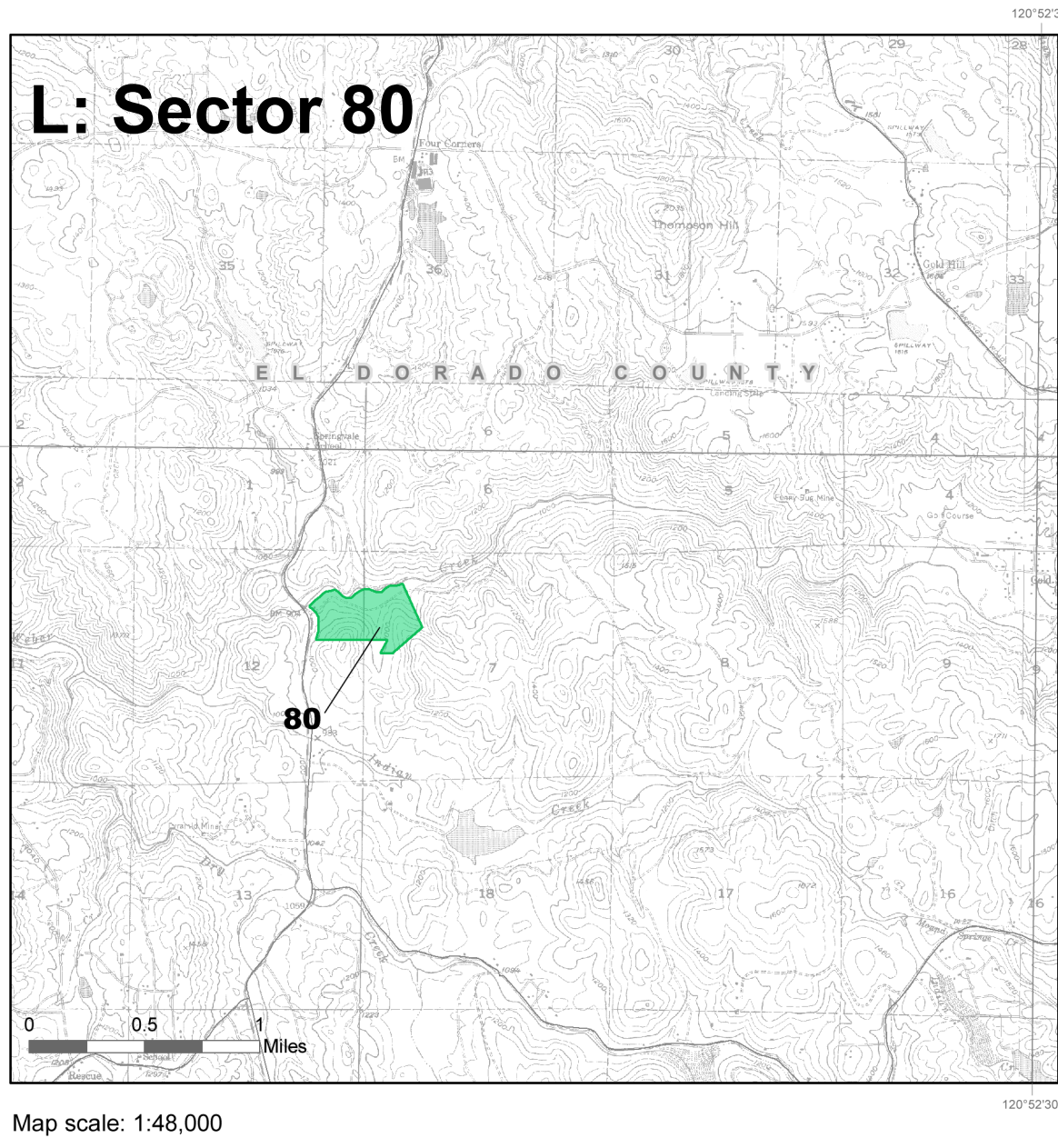
J: Sector 44



K: Sector 85



L: Sector 80



California
Department of Conservation
California Geological Survey

Copyright 2018 by the California Department of Conservation, California Geological Survey. All rights reserved. No part of this publication may be reproduced without written consent of the California Geological Survey.
The California Department of Conservation makes no warranties as to the suitability of this product for any particular purpose.
www.conservation.ca.gov/cgs