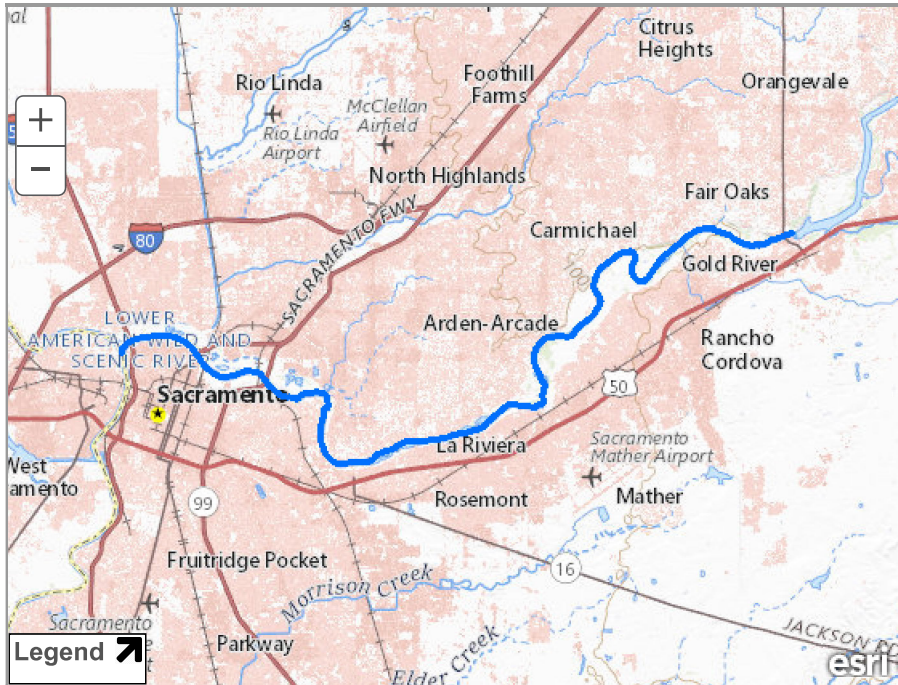


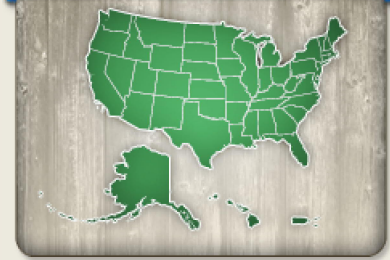


## AMERICAN RIVER (LOWER), CALIFORNIA



[+ View larger map](#)

### EXPLORE DESIGNATED RIVERS



Choose A State

Choose A River

*While progress should never come to a halt, there are many places it should never come to at all. — Paul Newman*



#### Managing Agency:

California Resources Agency

#### Designated Reach:

January 19, 1981. From the confluence with the Sacramento River to the Nimbus Dam.

#### Classification/Mileage:

Recreational — 23.0 miles; Total — 23.0 miles.



#### RELATED LINKS

*American River Eligibility Report*  
*American River Environmental Impact Statement*

*Photo Credit: Tim Palmer*

#### American River (Lower)

This short stretch of river, flowing through the city of Sacramento, is the most heavily used recreation river in California. It provides an urban greenway for trail and boating activities and is also known for its runs of steelhead trout and salmon.

[NATIONWIDE RIVERS INVENTORY](#) | [CONTACT US](#) | [PRIVACY NOTICE](#) | [Q & A SEARCH ENGINE](#) | [SITE MAP](#)



#### Designated Rivers

[About WSR Act](#)  
[State Listings](#)  
[Profile Pages](#)

#### National System

[WSR Table](#)  
[Study Rivers](#)  
[Stewardship](#)  
[WSR Legislation](#)

#### River Management

[Council](#)  
[Agencies](#)  
[Management Plans](#)  
[River Mgt. Society](#)  
[GIS Mapping](#)

#### Resources

[Q & A Search](#)  
[Bibliography](#)  
[Publications](#)  
[GIS Mapping](#)  
[Logo & Sign Standards](#)