

Indian Trust Assets Request Form

**Please send your request to: Kevin Clancy

Requested by	Melissa Dekar, x6153
Fund	17XR0680I1
WBS	RX072579066000000
Cost Center	RR2015200
Region # (if other than MP)	CGB-152
Project Name	North of Delta Offstream Storage/Sites Reservoir (Alternative 2)
CEC or EA Number	Supplemental Draft Environmental Impact Statement/Recirculated Environmental Impact Report
Project Description	The Bureau of Reclamation proposes to partially fund the construction of an offstream storage facility, Sites Reservoir in Colusa and Glenn counties. The project would also require work in Sutter, Yolo, and Tehama counties.
*Project Location (Township, Range, Section, e.g., T12 R5E S10, or XY cords)	Alternative 2 – The Project inundation area and primary construction area would be in Colusa and Glenn counties (western edge: 39.314667, -122.471136; eastern edge: 39.348104, -122.195105) (Figures 1a and 1b). Aggregate would be sourced from two areas: Butte Sand and Gravel in Sutter County (centroid: 39.161621, -121.80509) (Figure 2) and multiple existing/operating aggregate sites between Willows and Orland in Glenn County (southern edge: 39.531726, -122.178625 to northern edge: 39.741127, -122.252783) (Figures 3a and 3b). A pipeline would be constructed south of the town of Dunnigan in Yolo County (western edge: 38.85368, -121.975125; eastern edge: 38.870411, -121.80621) (Figure 4a and 4b). Construction would also occur at the existing Glenn Colusa Irrigation District (GCID) Main Canal Head Gate in north

	<p>east Glenn County (39.788865, -122.049842) (Figure 5) to replace the head gate.</p> <p>Two pumps would also be added into two of the existing, vacant pump bays at the existing Red Bluff Pumping Plant in Tehama County (centroid: 40.154197, -122.20815) (Figure 6).</p>
--	---

*Please include map with request, if available.

_____	Melissa Dekar	06/07/2021
Signature	Printed name of preparer	Date

ITA Determination:

The closest ITA to the western edge of the new inundation area and primary construction area is 50F SF17, approximately 7 miles away (Figure 1a). The closest ITA to the eastern edge of the new inundation area and primary construction area is Colusa Rancheria, approximately 9 miles away (Figure 1b). The closest ITA to the aggregate area in Sutter County is the Colusa Rancheria, approximately 12 miles away (Figure 2). The closest ITA to the southern edge of the aggregate area between Willows and Orland is Colusa Rancheria, approximately 18 miles away (Figure 3a). The closest ITA to the northern end of the aggregate area between Willows and Orland is Paskenta Rancheria, approximately 8 miles away (Figure 3b). The closest ITA to the Dunnigan pipeline area is the Rumsey Rancheria, approximately 11 miles away (Figure 4a and Figure 4b). The closest ITAs to the GCID Main Canal Head Gates is the Paskenta Rancheria, approximately 9 miles away (Figure 5). The closest ITA to the existing Red Bluff Pumping Plant is 50F 5080, approximately 9 miles away (Figure 6).

Based on the nature of the planned construction work and operational modeling results for Alternatives 2, it does not appear that the project will impact Indian hunting or fishing resources or water rights nor is the proposed activity on actual Indian lands. It is reasonable to assume that construction of the proposed action will not have any impacts on ITAs and operation of the proposed action will not have any adverse impacts on ITAs.

_____	Kevin Clancy	_____
Signature	Printed name of approver	Date

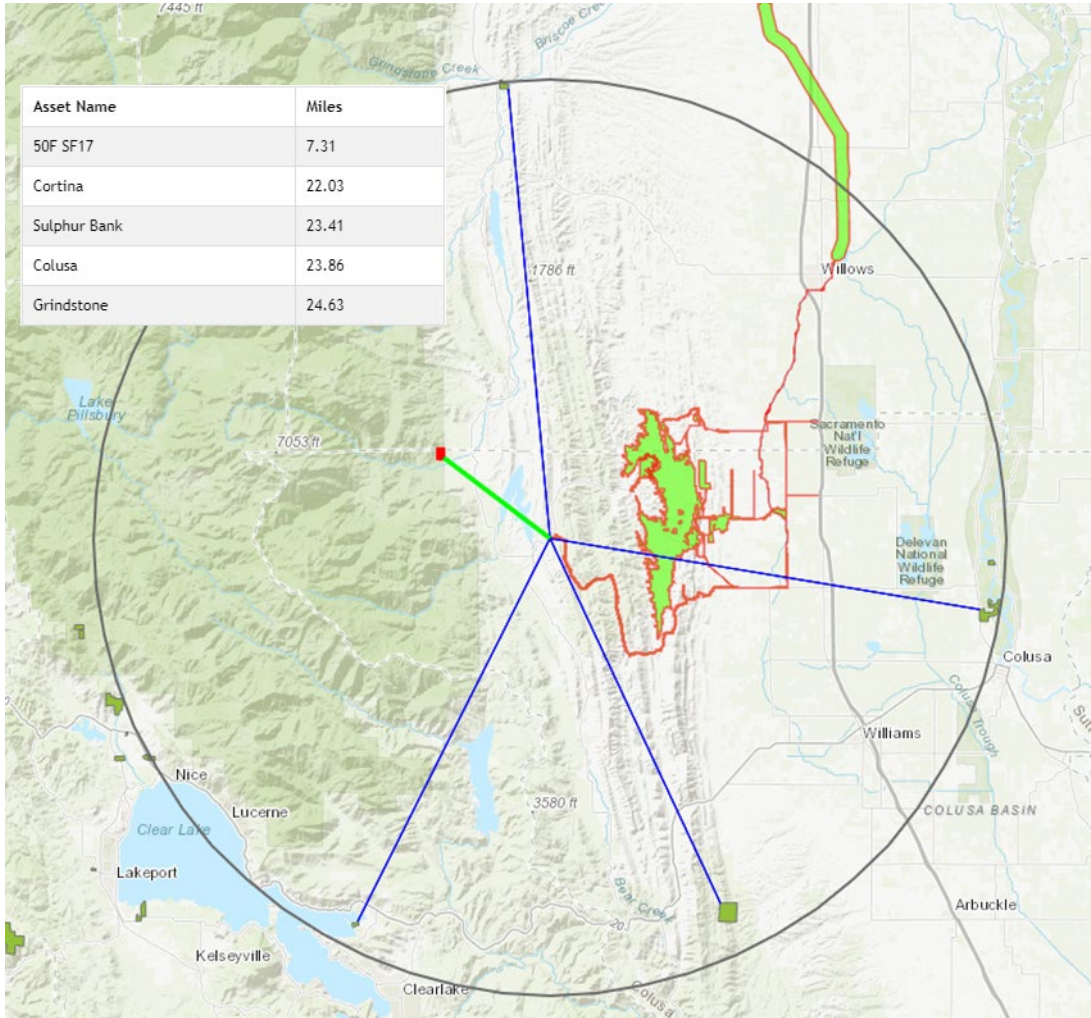


Figure 1a. Tessel Result - Inundation and Primary Construction Area (western edge)

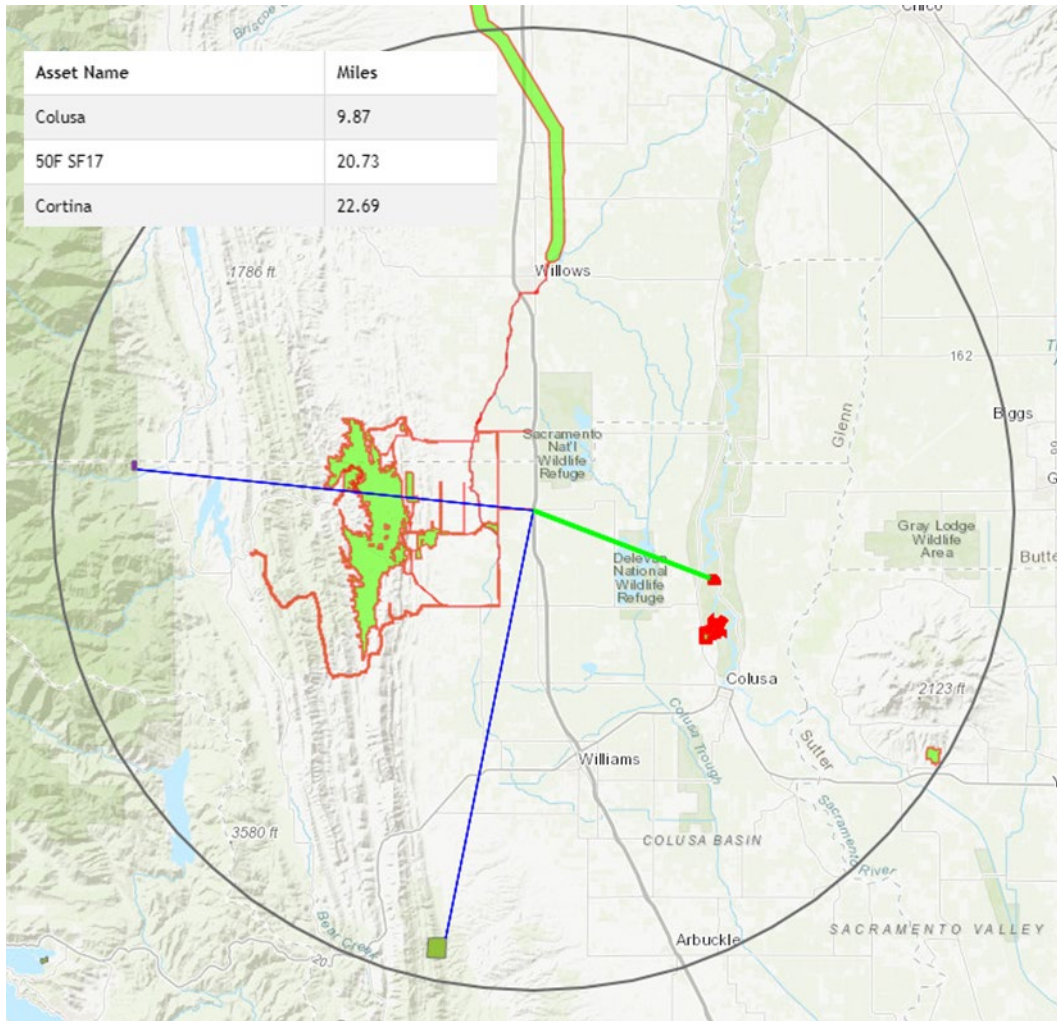


Figure 1b. Tessel Result - Inundation and Primary Construction Area (eastern edge)

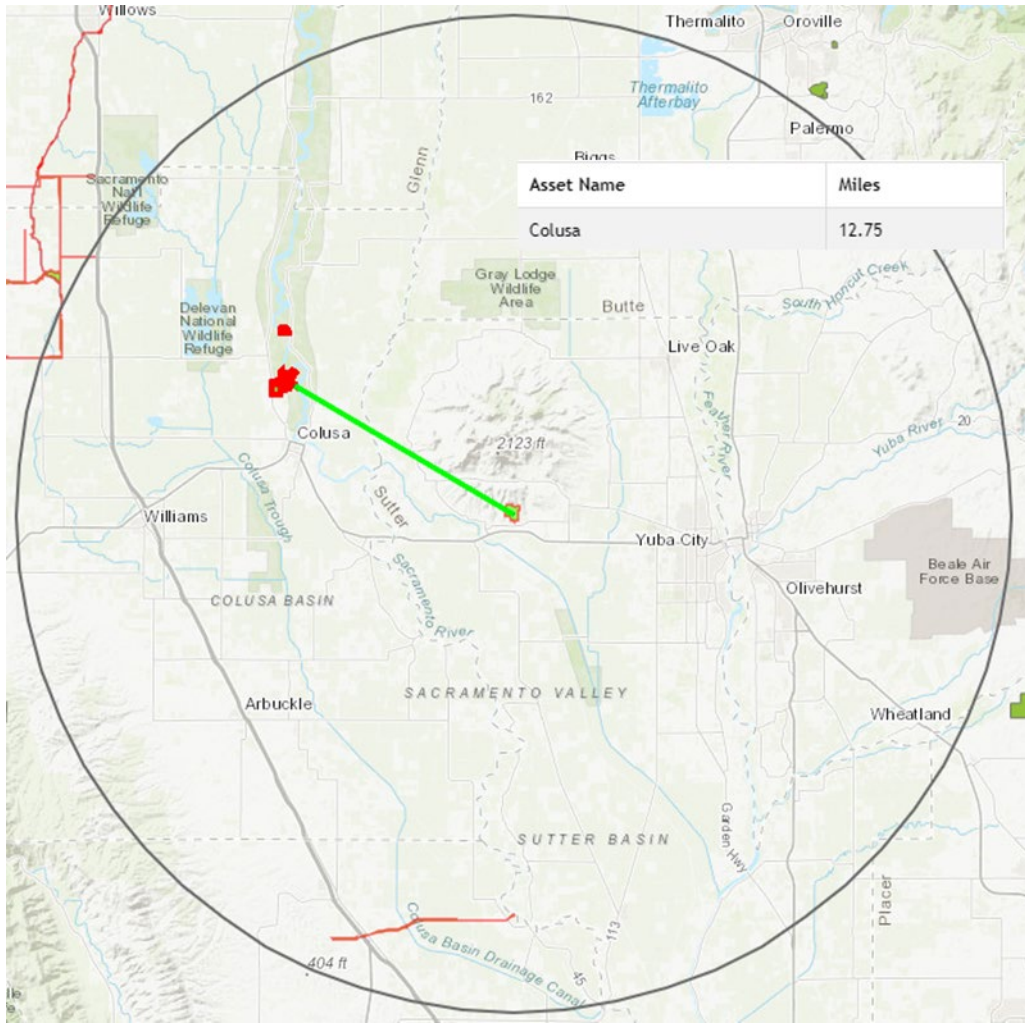


Figure 2. Tessel Result - Aggregate Area in Sutter County

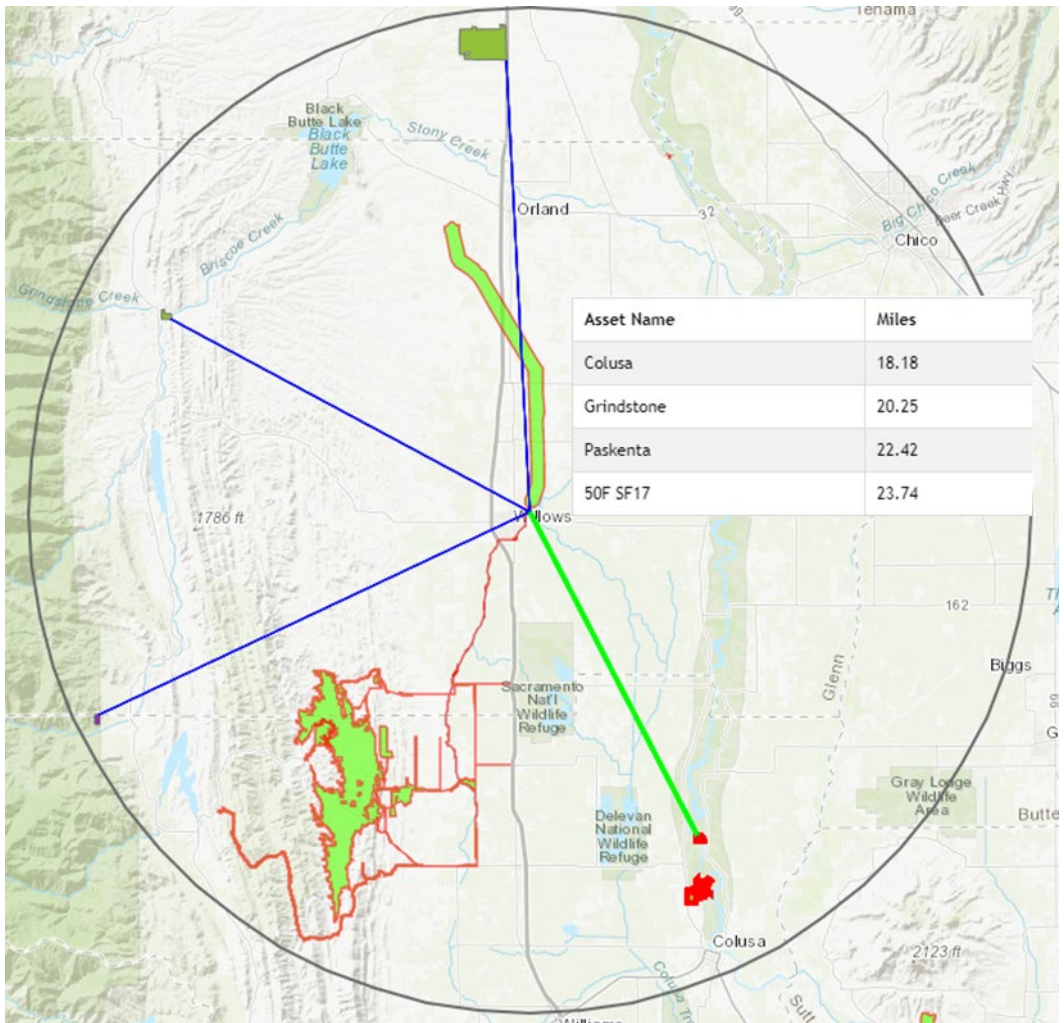


Figure 3a. Tessel Result - Aggregate Area between Willows and Orlando in Glenn County (southern edge).

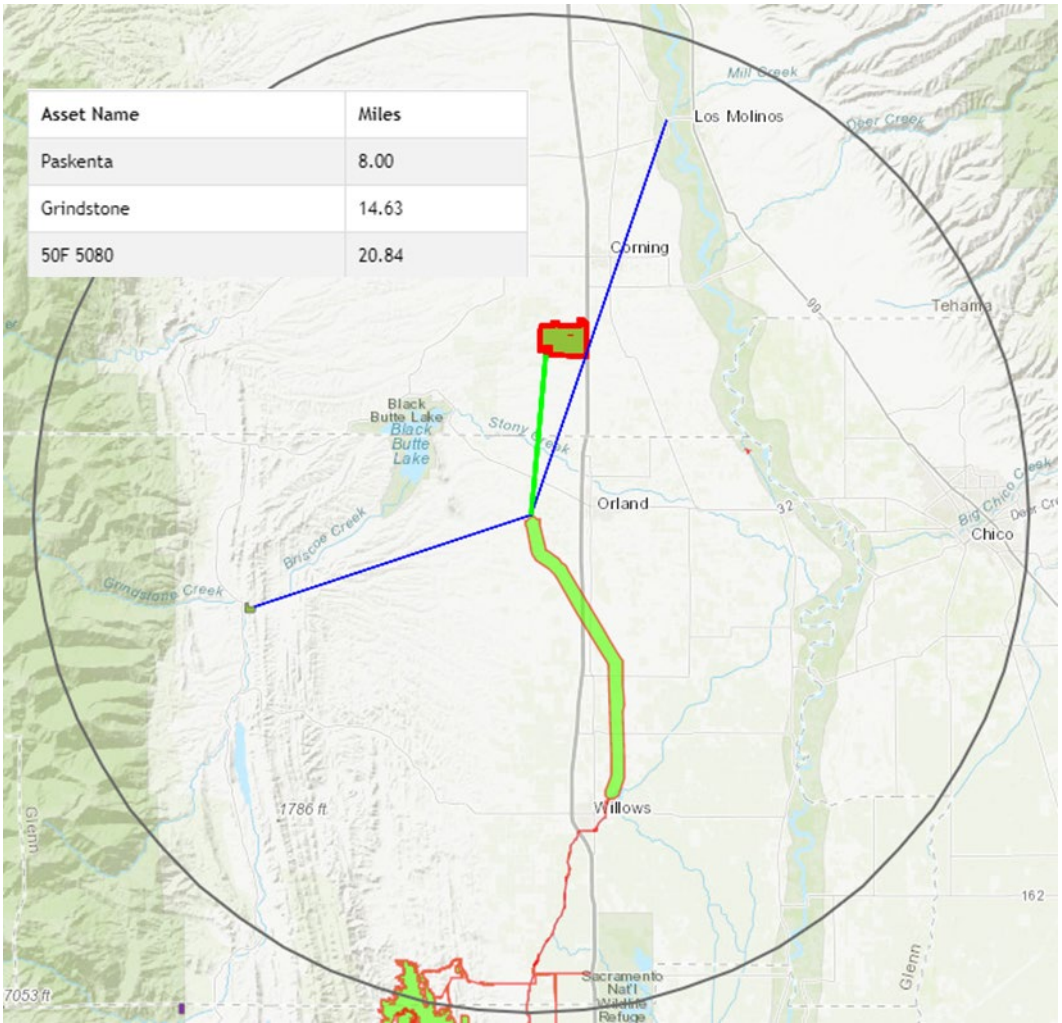


Figure 3b. Aggregate Area between Willows and Orlando in Glenn County (northern edge).

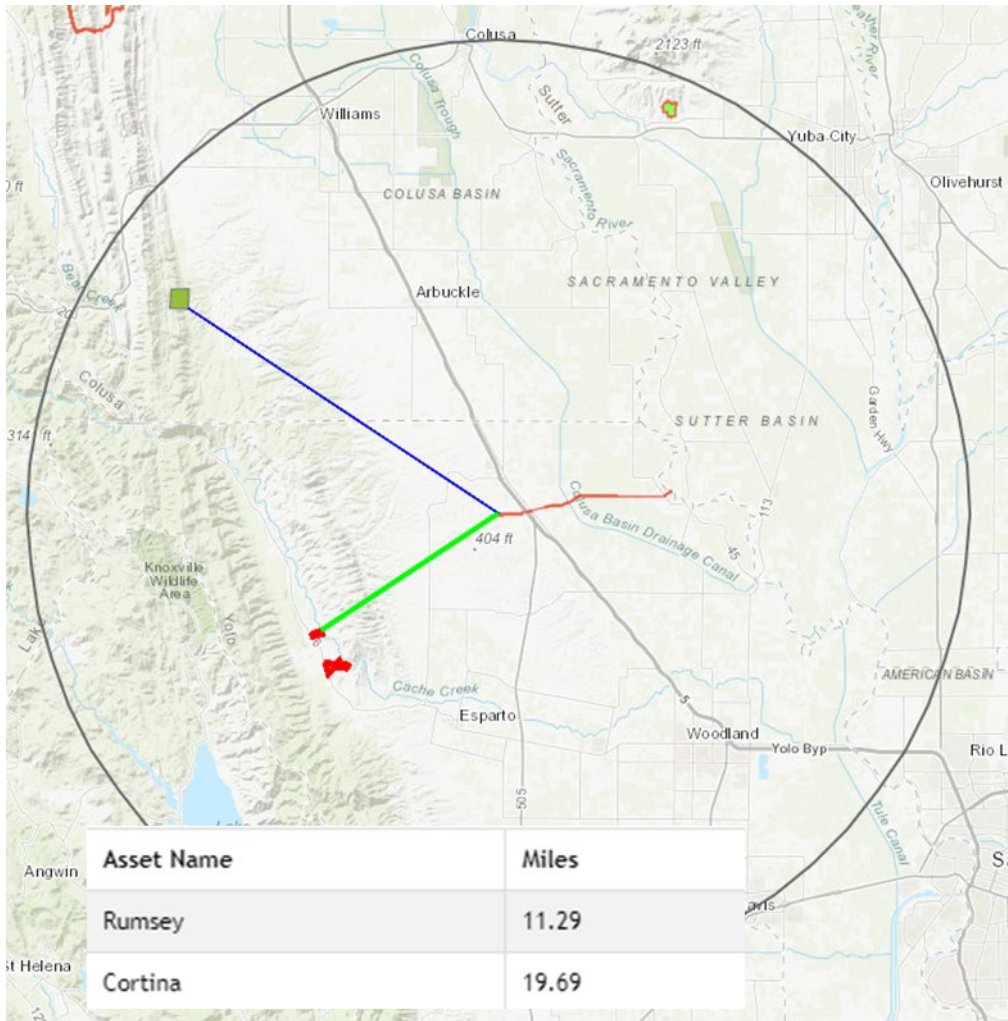


Figure 4a Dunnigan Pipeline Area (western edge).

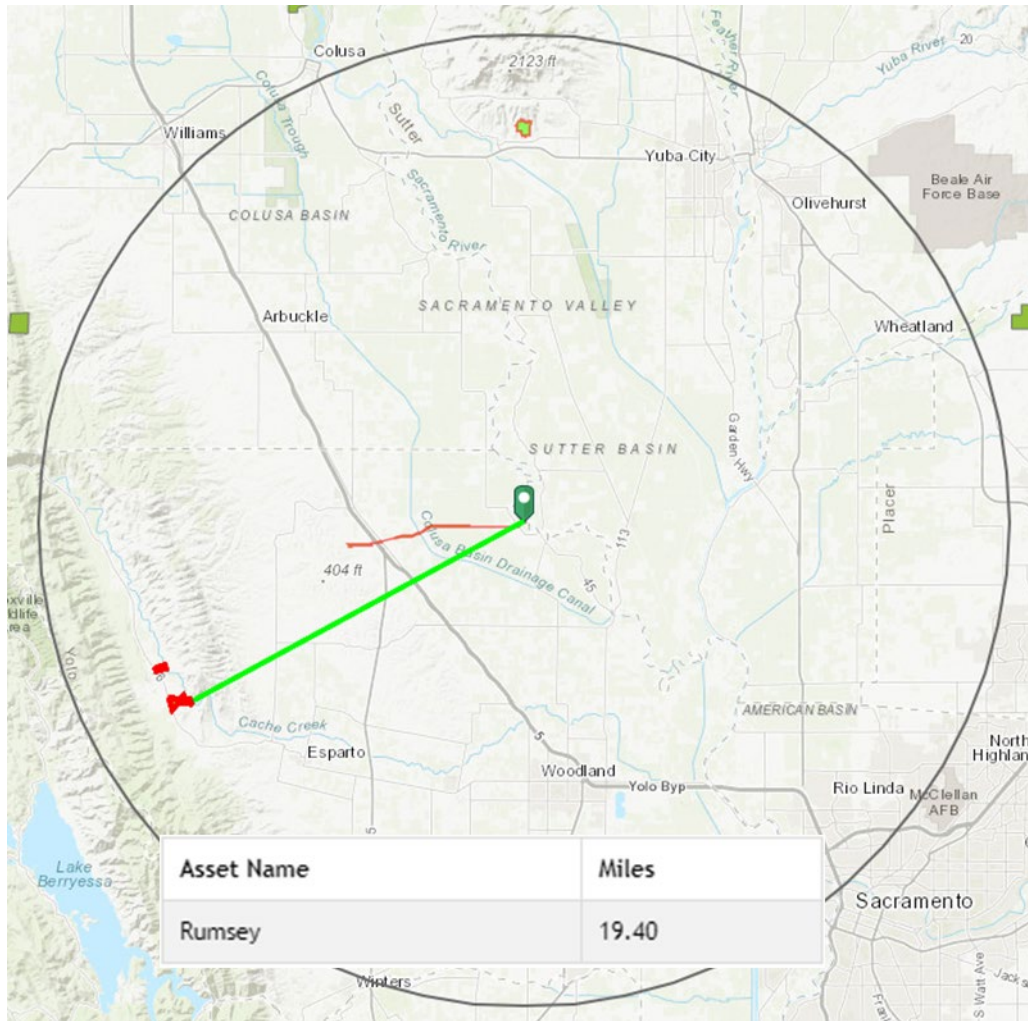


Figure 4b Dunnigan Pipeline Area (eastern edge).

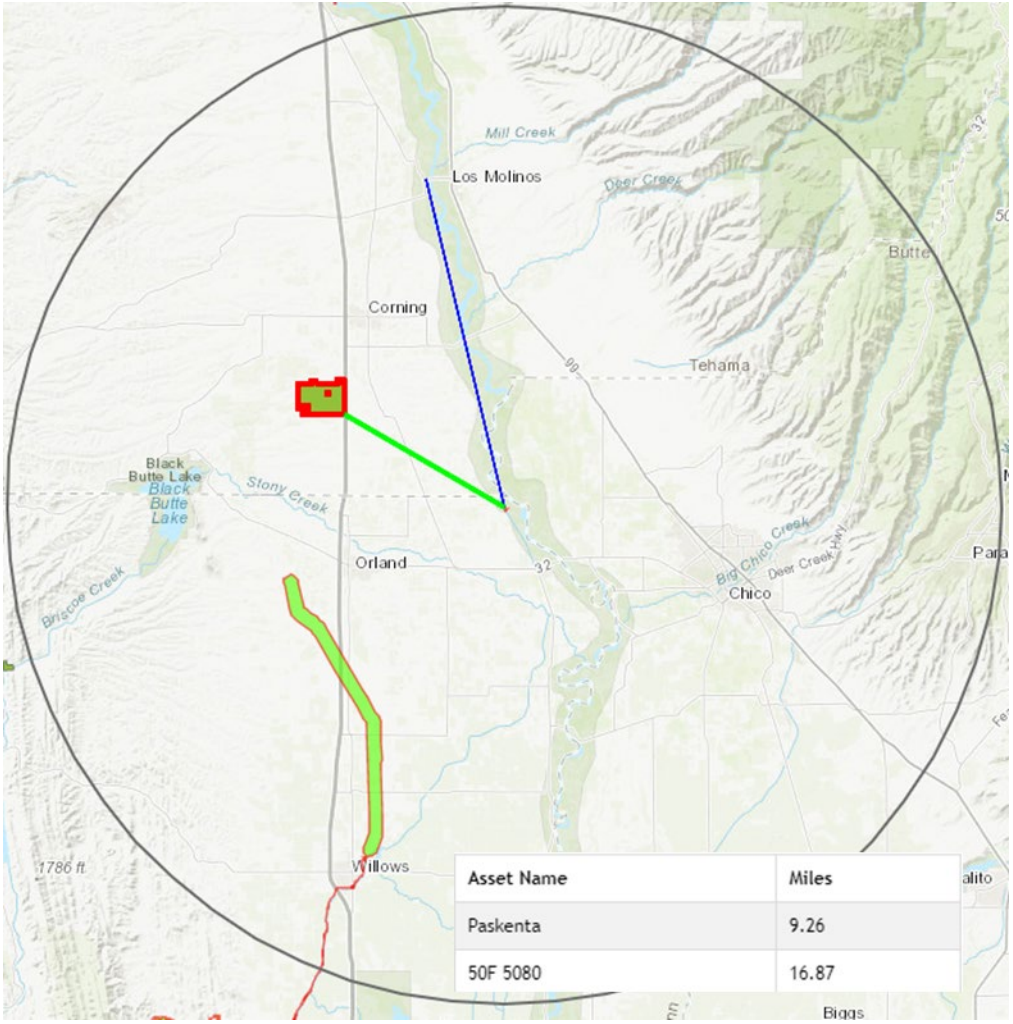


Figure 5. Tessel Result – Glenn Colusa Irrigation District Main Canal Head Gates in Glenn County

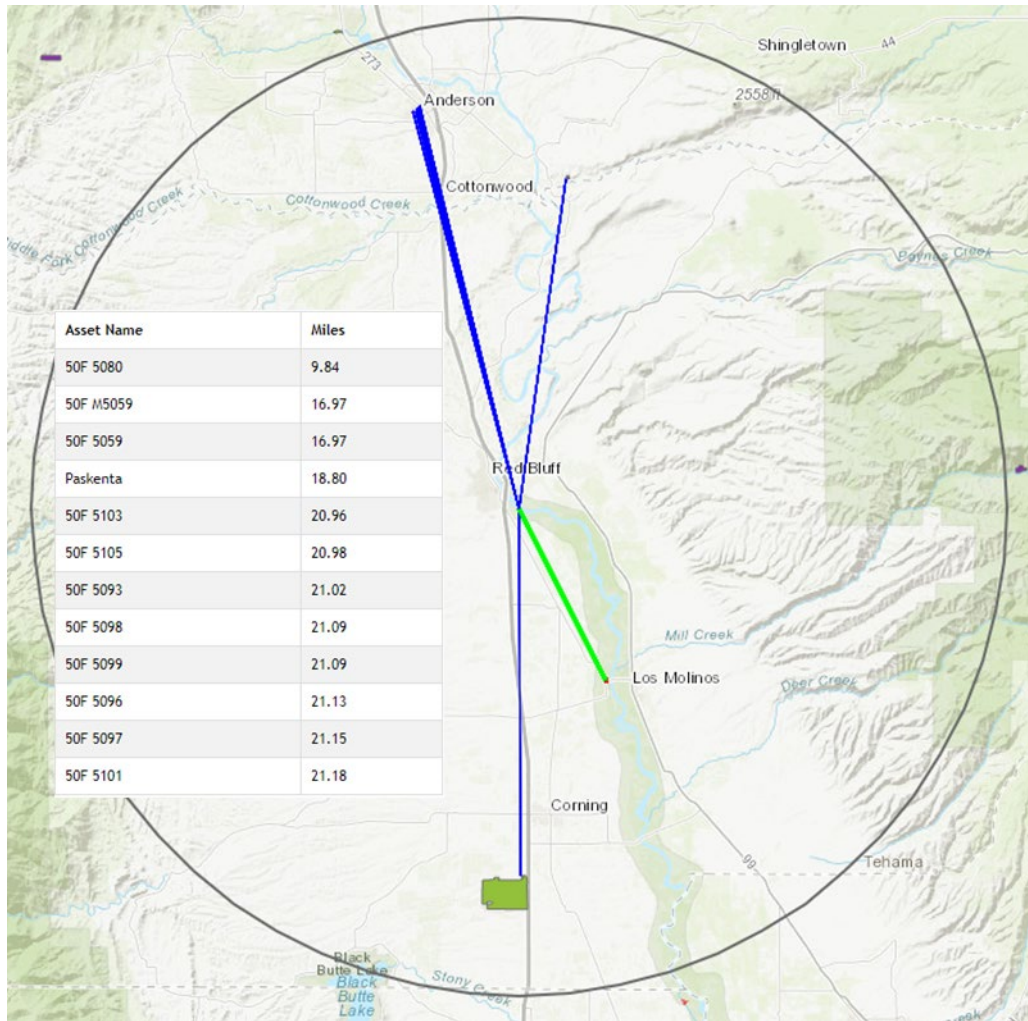


Figure 6. Tessel Result – Red Bluff Pumping Plant in Tehama County