
[Project Video](#)
[Benefits](#)
[Myths & Facts](#)
[Dam Safety \(Flooding & Earthquake\)](#)
[Project Support](#)

About Del Puerto Canyon Reservoir

The proposed Del Puerto Canyon Reservoir would be located in Del Puerto Canyon in the Coast Range foothills west of Patterson and south of the Sacramento-San Joaquin Delta, just west of I-5.

Current Picture

Del Puerto Water District (DPWD) and the San Joaquin River Exchange Contractors Water Authority (Exchange Contractors) supply Central Valley Project (CVP) water to highly productive farmlands in Stanislaus, San Joaquin, Merced, Fresno, and Madera counties. CVP water is pumped south from the Sacramento-San Joaquin Delta (Delta) through the Delta-Mendota Canal. For more than two decades, droughts and pumping restrictions imposed to protect fish habitat and water quality have caused shortages and volatility in water deliveries exported from the Delta. As a result, regional economic stability has been impacted and the environment compromised.

The Proposal

DPWD and the Exchange Contractors are partnering to construct and operate the Del Puerto Canyon Reservoir. The project will deliver water from the Delta-Mendota Canal into the new reservoir, where it will be stored and released on a carefully managed basis. The reservoir would allow water to be delivered into storage during wetter periods until it is needed in drier periods for irrigation, groundwater recharge, or wildlife beneficial uses.

Agricultural users of the stored water will pay for the project, and are actively seeking supplemental state and federal funding.

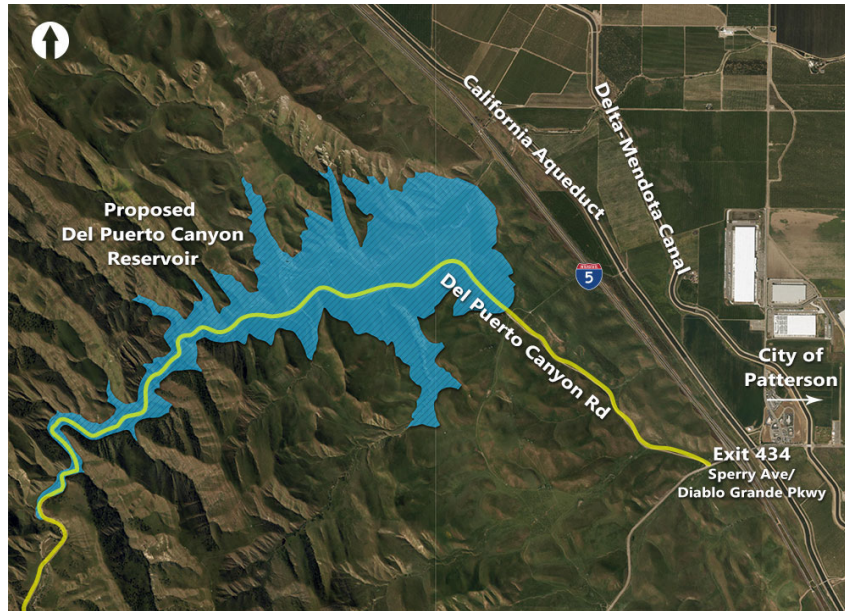
[S.upport](#)
[O.ffstream](#)
[S.torage](#) 👍

[f Like us on Facebook!](#)

This Facebook page is not managed by the Del Puerto Canyon Reservoir project partners

Reservoir Features & Benefits

- Locally owned, locally controlled off-stream water storage
- 800-acre reservoir stores up to 82,000 acre-feet of water
- Water stored for use during dry seasons and droughts (up to 60,000 acre-feet per year)
- Supports farming and the local agricultural economy
- Provides water for wildlife refuges
- Eliminates flooding on Del Puerto Creek
- Provides groundwater recharge for City of Patterson water supplies
- Recreation opportunity in partnership with Stanislaus County and City of Patterson



Benefits

- ✓ Improve water supply reliability for agriculture and wildlife refuges
- ✓ Capture Del Puerto Creek runoff to increase flood protection
- ✓ Support the local and regional economy
- ✓ Enhance local management of groundwater and surface water to benefit local communities, which rely on agricultural irrigation to replenish the groundwater supply

Timeline

- 📅 Draft Environmental Impact Report (EIR) release in December 2019
- 📅 45-Day public comment period on the draft EIR
- 📅 Environmental review completed by mid-2020
- 📅 Design and land acquisition through 2022
- 📅 Construction begins in 2022; six years to complete

Get Updates!

Sign up to be on our mailing list for updates about the Del Puerto Canyon Reservoir project.

* Email

* First Name

Last Name

Company

By submitting this form, you are consenting to receive marketing emails from: Del Puerto Water District, P.O. Box 1596 , Patterson, CA, 95363, US, <http://www.delpuertocanyonreservoir.com>. You can revoke your consent to receive emails at any time by using the SafeUnsubscribe@ link, found at the bottom of every email. [Emails are serviced by Constant Contact.](#)

*

© 2019 -2021 Del Puerto Canyon Reservoir Project
delpuertocanyonreservoir.com | [Privacy Policy](#)