



Tomás Aragón, MD, MPH, DrPH  
Director and State Public Health Officer

State of California—Health and Human Services Agency  
California Department of Public Health



GAVIN NEWSOM  
Governor

## **Coccidioidomycosis in California Provisional Monthly Report**

### **January - August 2022**

(as of August 31, 2022)

Center for Infectious Diseases  
Division of Communicable Disease Control  
Infectious Diseases Branch  
Surveillance and Statistics Section

(An [accessible Excel file version of the August 2022 Coccidioidomycosis in California Provisional Monthly Report](#) is available for download)

**Cumulative Reported Suspect, Probable, and Confirmed Cases of Coccidioidomycosis in January through August by  
Local Health Jurisdiction and Year of Estimated Onset, California, 2020-2022  
(reported as of August 31 of each year\*)**

County	Year of Estimated Onset**		
	2022	2021	2020
California Total	4,741	5,179	4,113

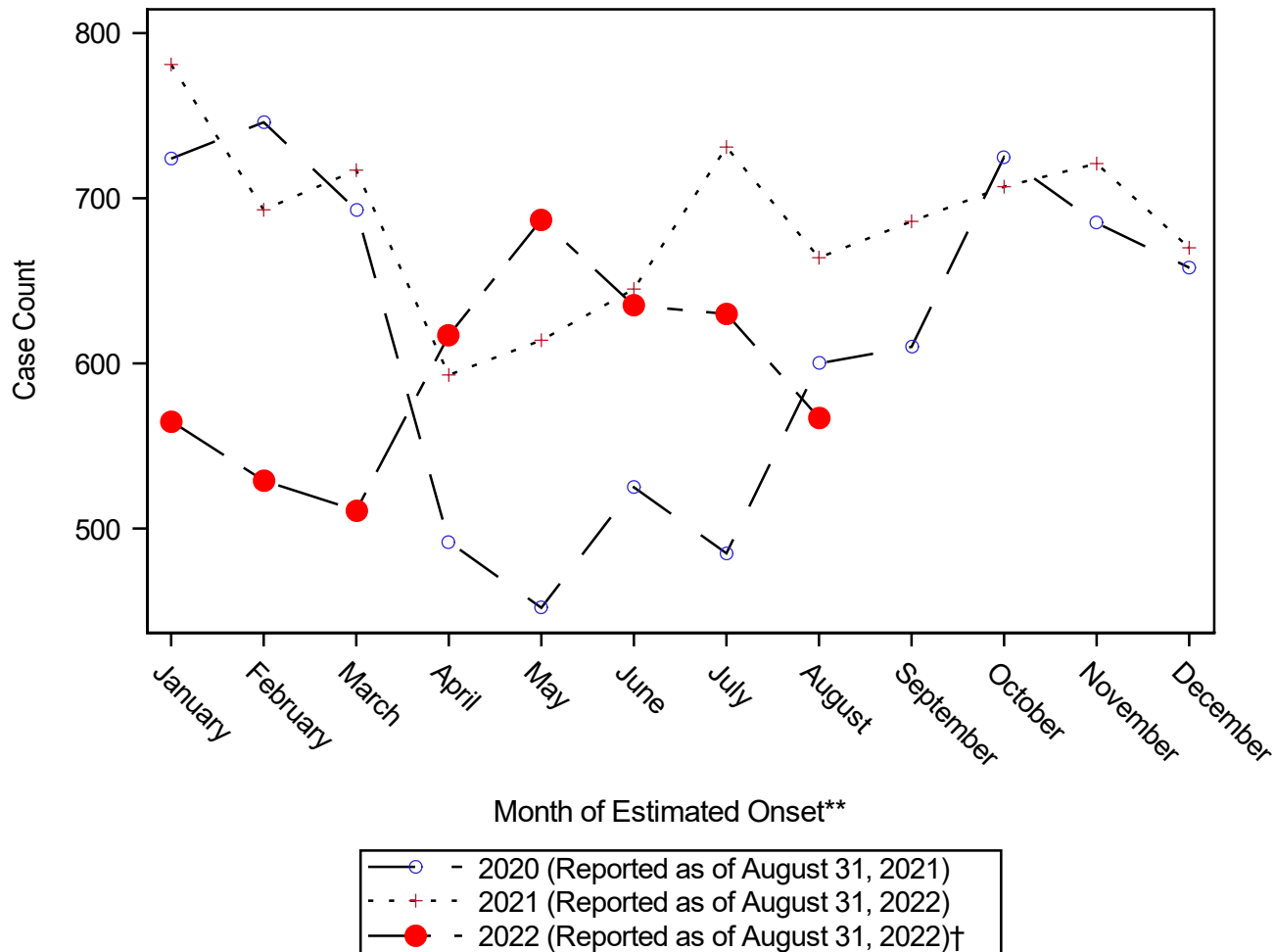
Local Health Jurisdiction	Year of Estimated Onset**		
	2022	2021	2020
<b>Alameda County Total</b>	62	75	44
Alameda	59	75	43
Berkeley	3	0	1
Alpine	0	0	0
Amador	7	2	5
Butte	3	6	7
Calaveras	1	0	4
Colusa	1	0	1
Contra Costa	62	107	98
Del Norte	0	2	1
El Dorado	5	1	1
Fresno	287	243	287
Glenn	1	3	0
Humboldt	3	0	0
Imperial	14	2	5
Inyo	1	2	1
Kern	1,505	1,729	1,222
Kings	106	111	106
Lake	2	1	2
Lassen	1	0	2
<b>Los Angeles County Total</b>	1,006	921	620
Long Beach	38	35	36
Los Angeles	961	878	583
Pasadena	7	8	1
Madera	36	27	26
Marin	2	5	2
Mariposa	1	2	0
Mendocino	3	1	2
Merced	46	45	44
Modoc	0	0	0
Mono	0	1	0
Monterey	85	79	81
Napa	0	4	2
Nevada	1	1	3
Orange	189	194	139
Placer	6	10	7
Plumas	0	0	0
Riverside	260	313	194
Sacramento	38	44	35
San Benito	2	5	1
San Bernardino	152	175	153
San Diego	176	297	302
San Francisco	13	18	13
San Joaquin	75	84	87
San Luis Obispo	99	121	105
San Mateo	14	16	15
Santa Barbara	25	45	35
Santa Clara	50	29	35
Santa Cruz	8	10	2
Shasta	0	1	2
Sierra	0	0	0
Siskiyou	0	0	1
Solano	20	26	13
Sonoma	9	12	4
Stanislaus	42	59	41
Sutter	0	1	1
Tehama	0	0	1
Trinity	0	0	0
Tulare	181	187	180
Tuolumne	0	0	1
Ventura	136	158	173
Yolo	4	3	6
Yuba	1	1	1

**Cumulative Reported Suspect, Probable, and Confirmed Annual Cases of Coccidioidomycosis by Local Health Jurisdiction and Year of Estimated Onset, California, 2019-2021**  
**(reported as of August 31 of the following year\*)**

County	Year of Estimated Onset**		
	2021	2020	2019
California Total	8,222	7,395	9,293

Local Health Jurisdiction	Year of Estimated Onset**		
	2021	2020	2019
Alameda County Total	99	68	99
Alameda	98	67	96
Berkeley	1	1	3
Alpine	0	0	0
Amador	3	8	5
Butte	13	12	6
Calaveras	1	8	3
Colusa	0	1	3
Contra Costa	145	145	135
Del Norte	3	1	0
El Dorado	3	3	5
Fresno	409	448	625
Glenn	3	1	2
Humboldt	2	2	2
Imperial	4	10	19
Inyo	3	1	0
Kern	2,822	2,606	3,375
Kings	169	157	221
Lake	2	3	3
Lassen	0	3	6
Los Angeles County Total	1,484	1,106	1,173
Long Beach	53	56	57
Los Angeles	1,411	1,047	1,112
Pasadena	20	3	4
Madera	49	35	66
Marin	7	6	5
Mariposa	2	1	2
Mendocino	1	3	4
Merced	81	80	108
Modoc	0	0	0
Mono	2	0	0
Monterey	120	117	188
Napa	5	2	4
Nevada	1	4	1
Orange	285	240	288
Placer	12	10	11
Plumas	0	0	0
Riverside	471	370	400
Sacramento	81	59	103
San Benito	10	2	5
San Bernardino	252	235	230
San Diego	454	464	433
San Francisco	29	18	25
San Joaquin	136	135	284
San Luis Obispo	179	183	280
San Mateo	22	19	27
Santa Barbara	66	63	77
Santa Clara	65	44	78
Santa Cruz	17	3	21
Shasta	1	4	3
Sierra	0	0	0
Siskiyou	0	2	1
Solano	39	22	35
Sonoma	20	7	12
Stanislaus	90	69	81
Sutter	2	1	5
Tehama	2	3	2
Trinity	0	0	0
Tulare	319	311	437
Tuolumne	1	2	4
Ventura	225	286	370
Yolo	9	10	16
Yuba	2	2	5

**Reported Suspect, Probable, and Confirmed Cases of Coccidioidomycosis by Month and Year of Estimated Onset, California, 2020-2022**



Year of Estimated Onset**	Month of Estimated Onset**											
	JAN	FEB	MAR	APR	MAY	JUN	JUL	AUG	SEP	OCT	NOV	DEC
2022 (Reported as of August 31, 2022)†	565	529	511	617	687	635	630	567	.	.	.	.
2021 (Reported as of August 31, 2022)	781	693	717	593	614	645	731	664	686	707	721	670
2020 (Reported as of August 31, 2021)	724	746	693	492	452	525	485	600	610	725	685	658

## Technical Notes

In interpretation of the numbers in this report, please consider the following points:

\* Data presented in this report may differ from previously published data due to delays inherent to case reporting, laboratory reporting, and epidemiologic investigation.

\*\* Estimated onset date is the date closest to the time when symptoms first appeared. For cases which date of onset was not recorded, the estimated onset date can range from the date of first appearance of symptoms to the date the report was made to the California Department of Public Health.

† Due to reporting delays, counts for January - August 2022 (reported as of August 31 of same year) are likely to increase and not directly comparable to counts for January - August 2021 and January - August 2020 (reported as of August 31 of the following year) as presented.

Because coccidioidomycosis can occur as a chronic condition and be reported more than once, we included only the first report of coccidioidomycosis per person using a probabilistic de-duplication method spanning multiple reporting years.

Local health jurisdictions reviewed cases and determined whether surveillance case definitions were met to classify cases as Confirmed, Probable, or Suspect according to established clinical and laboratory criteria. All cases classified as Confirmed, Probable, and Suspect are included in this report.

Combined provisional Suspect, Probable, and Confirmed case counts in this report may differ from counts of Confirmed cases that CDPH will eventually publish in final year-end surveillance reports.

Prepared by Alyssa Nguyen, Gail Sondermeyer Cooksey, Yanyi Djamba, and Duc Vugia, Infectious Diseases Branch, Division of Communicable Disease Control, Center for Infectious Diseases, California Department of Public Health.