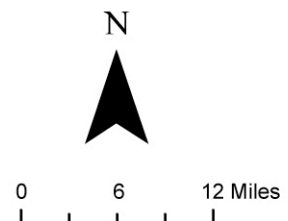
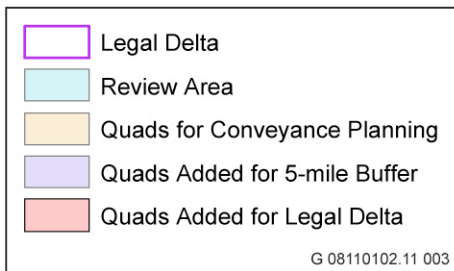
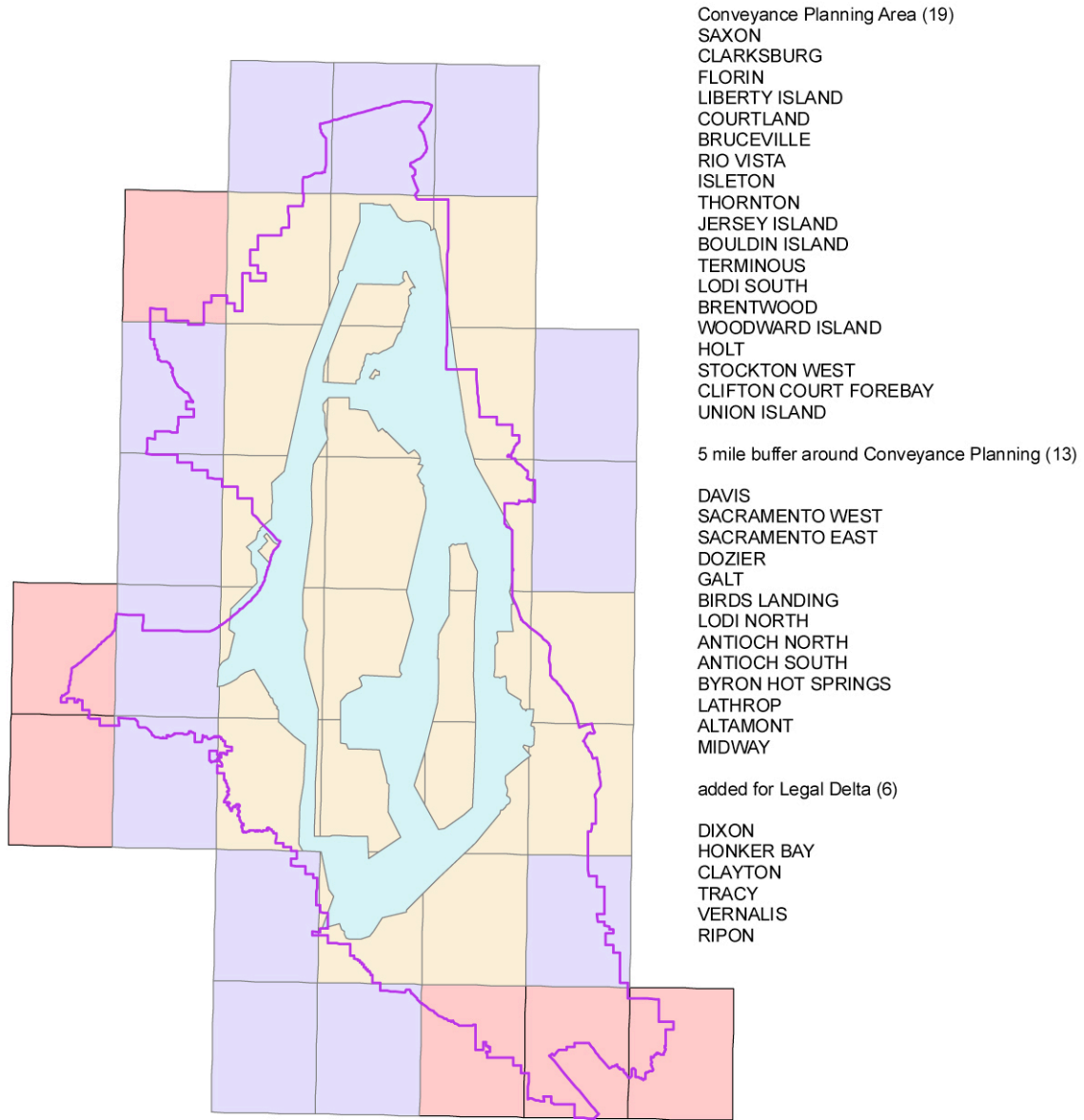


Source: Planning Area – DWR 2009

2009 Bay Delta Conservation Plan EIR/EIS Environmental Data Report
Date Created: 7/27/2010

**Figure 1.3-1
March 2009 Conveyance Planning Area**



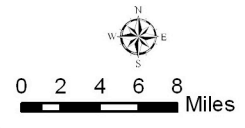
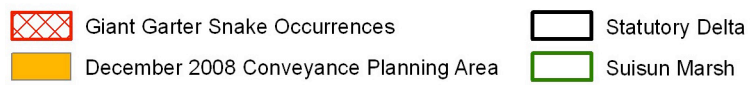
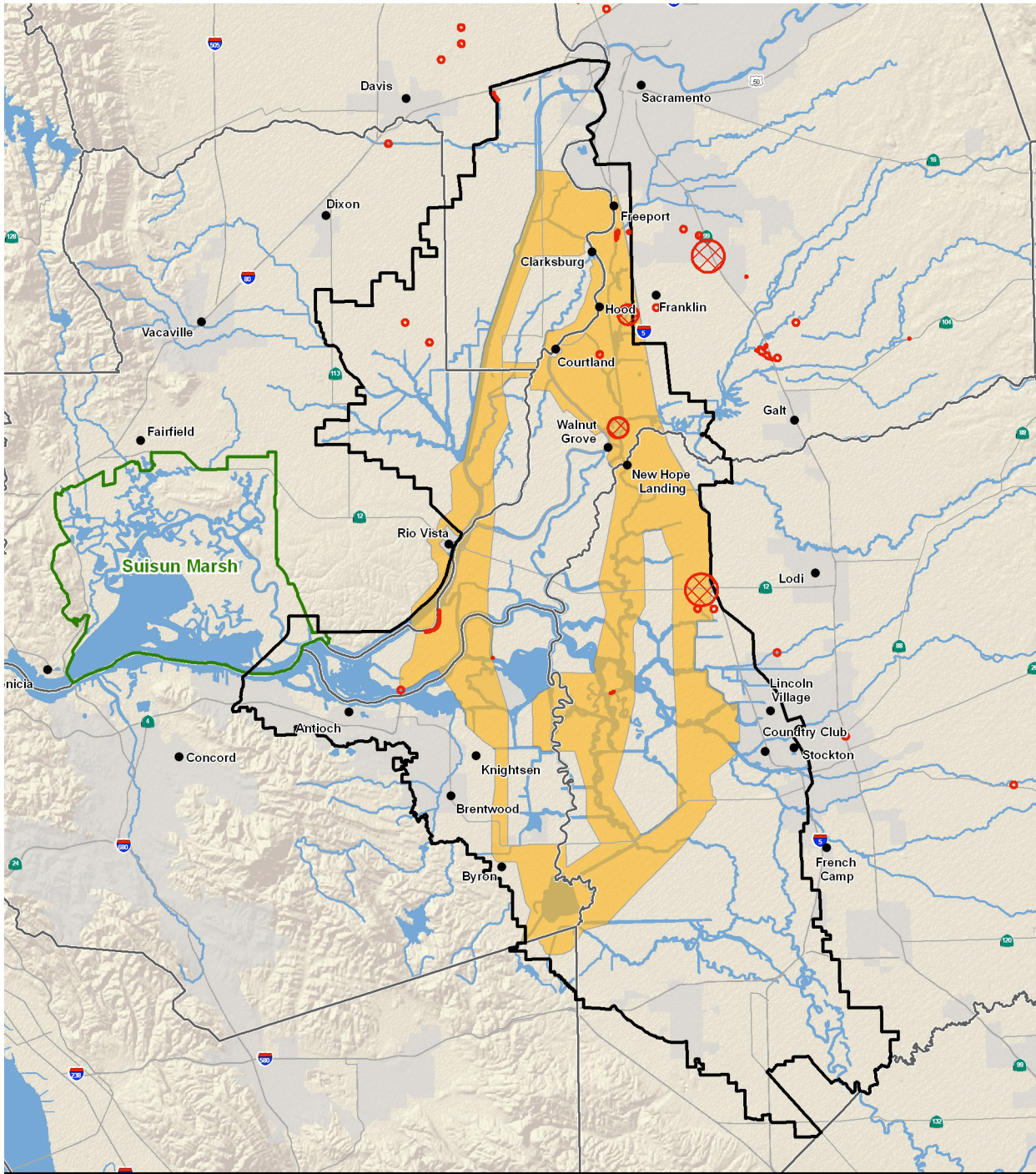
Source: Conveyance Planning Area – DWR 2008

2009 Bay Delta Conservation Plan EIR/EIS Environmental Data Report
 Date Created: 07/26/2010

Source: Figure 3.1, p. 3-4 (DWR 11-30-2010).

App_12C_(September 25, 2013 4:03 PM)55

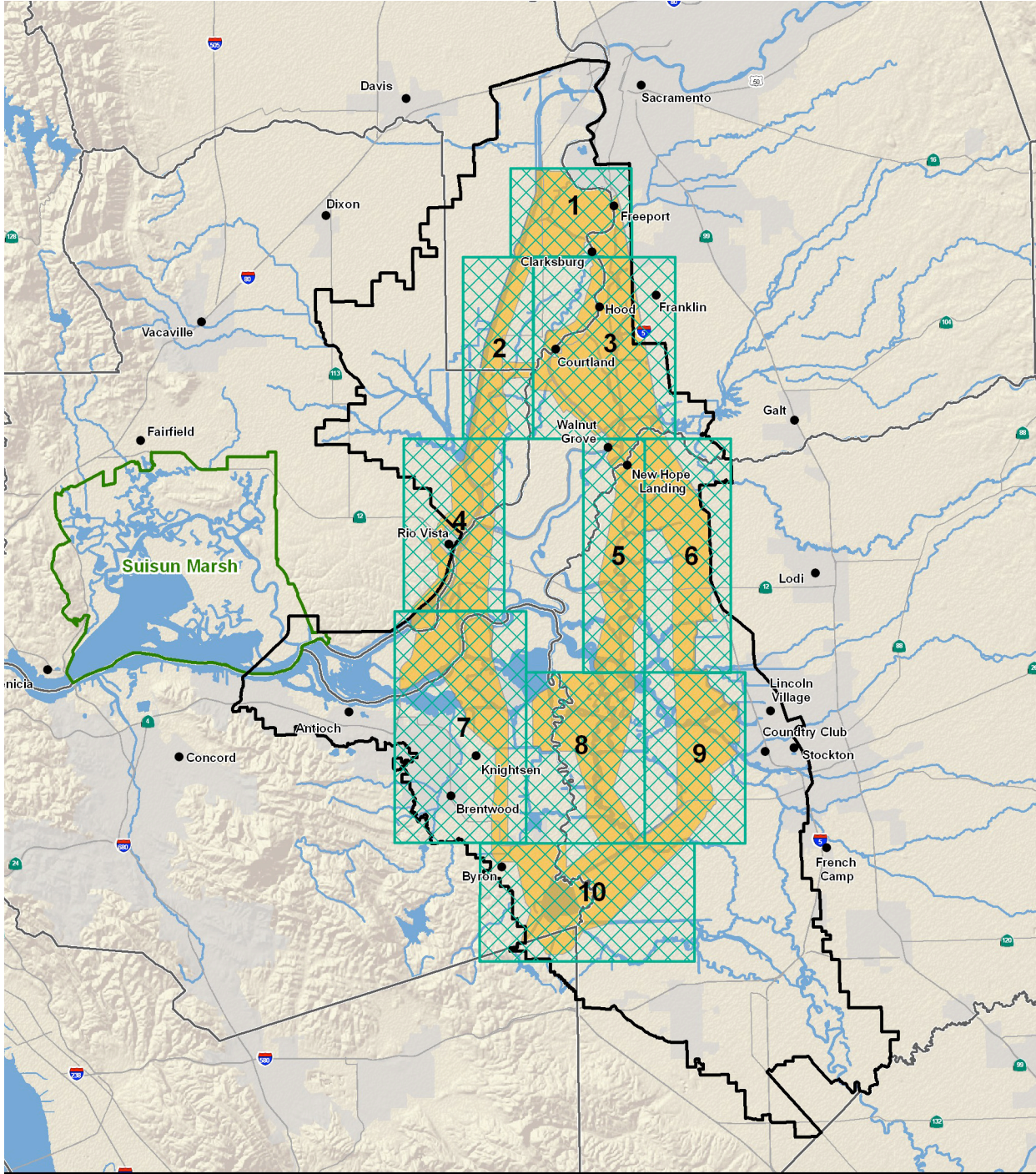
**Figure 2.1-1
 USGS 7.5-Minute Quadrangles Used to Develop the List of Species Evaluated in the
 EIR/EIS and Considered for Surveying in the Conveyance Planning Area
 (as of December 2008)**



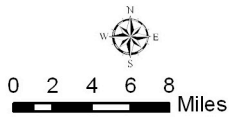
2009 Bay Delta Conservation Plan EIR/EIS Environmental Data Report
 Sources: Planning Area – DWR 2010; Giant Garter Snake Occurrences – CNDDB 2008
 Date Created: 7/27/2010

App_12C_(September 25, 2013 4:03 PM)55

**Figure 2.7-1
 Historical Giant Garter Snake Occurrences from CNDDB**



- Suitable Giant Garter Snake Survey Area
- December 2008 Conveyance Planning Area
- Suisun Marsh
- Statutory Delta

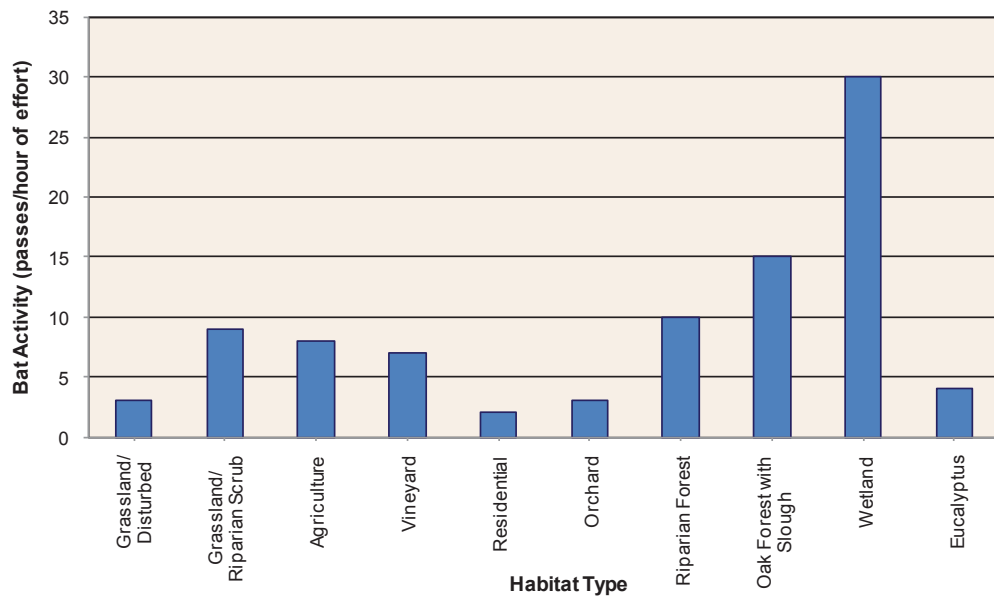


Source: Planning Area – DWR 2008; Survey Areas – DWR 2010

2009 Bay Delta Conservation Plan EIR/EIS Environmental Data Report
Date Created: 7/27/2010

App_12C_(September 25, 2013 4:03 PM)SS

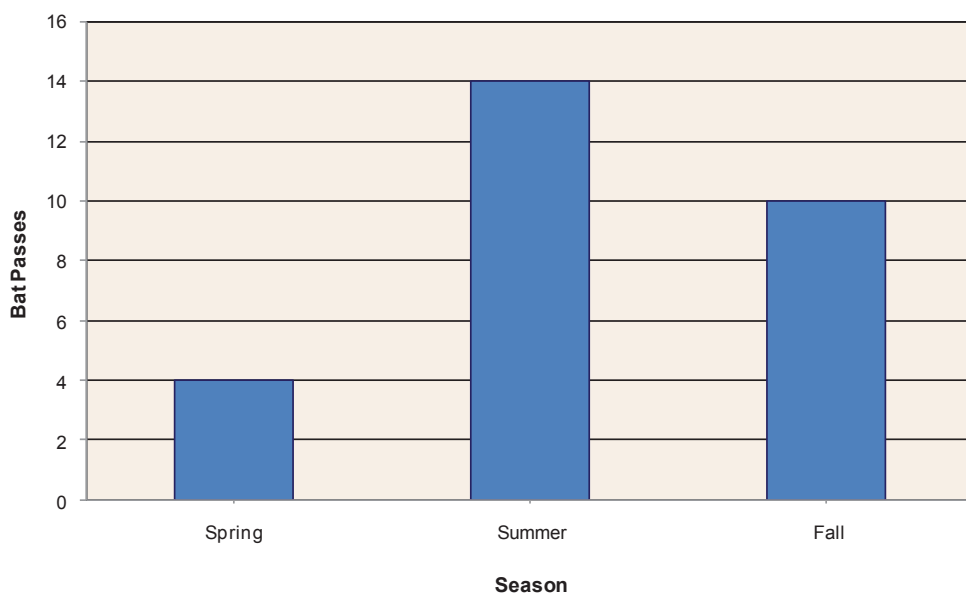
**Figure 2.7-2
Giant Garter Snake Survey Area**



Source: Data collected by DHCCP in 2009

BDCP EIR/EIS
 Unique ID: AECOM001 Date Created: 02/01/10

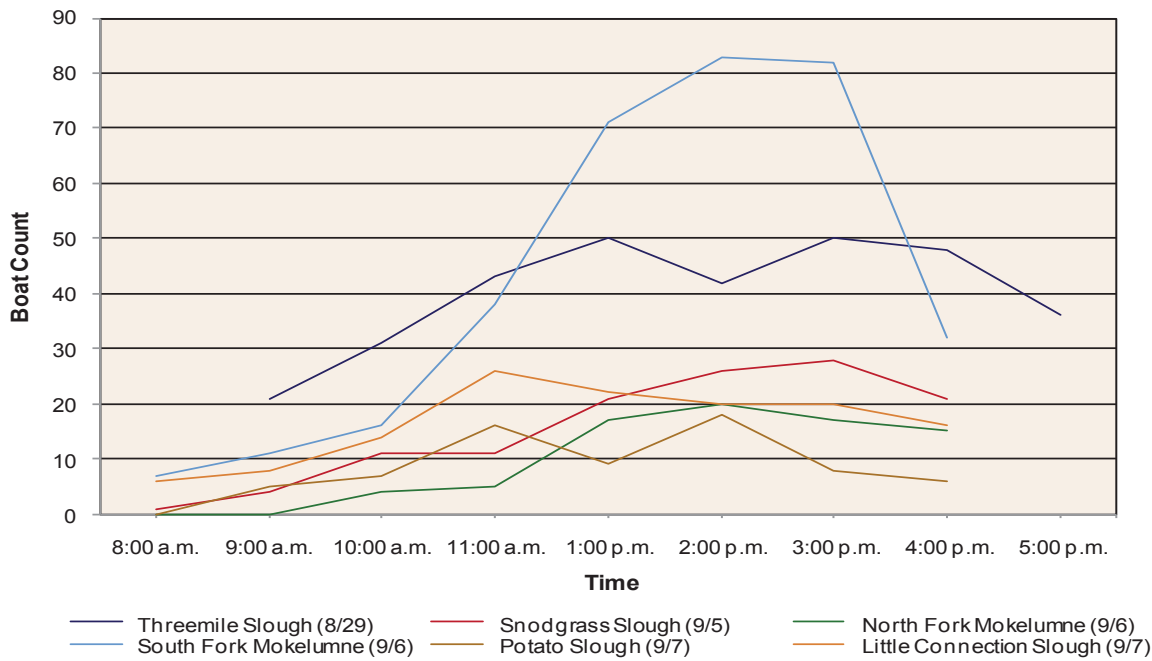
Figure 2.9-1
Bat Activity at 10 Habitat Types in the Conveyance Planning Area



Source: Data collected by DHCCP in 2009

BDCP EIR/EIS
 Unique ID: AECOM002 Date Created: 02/01/10

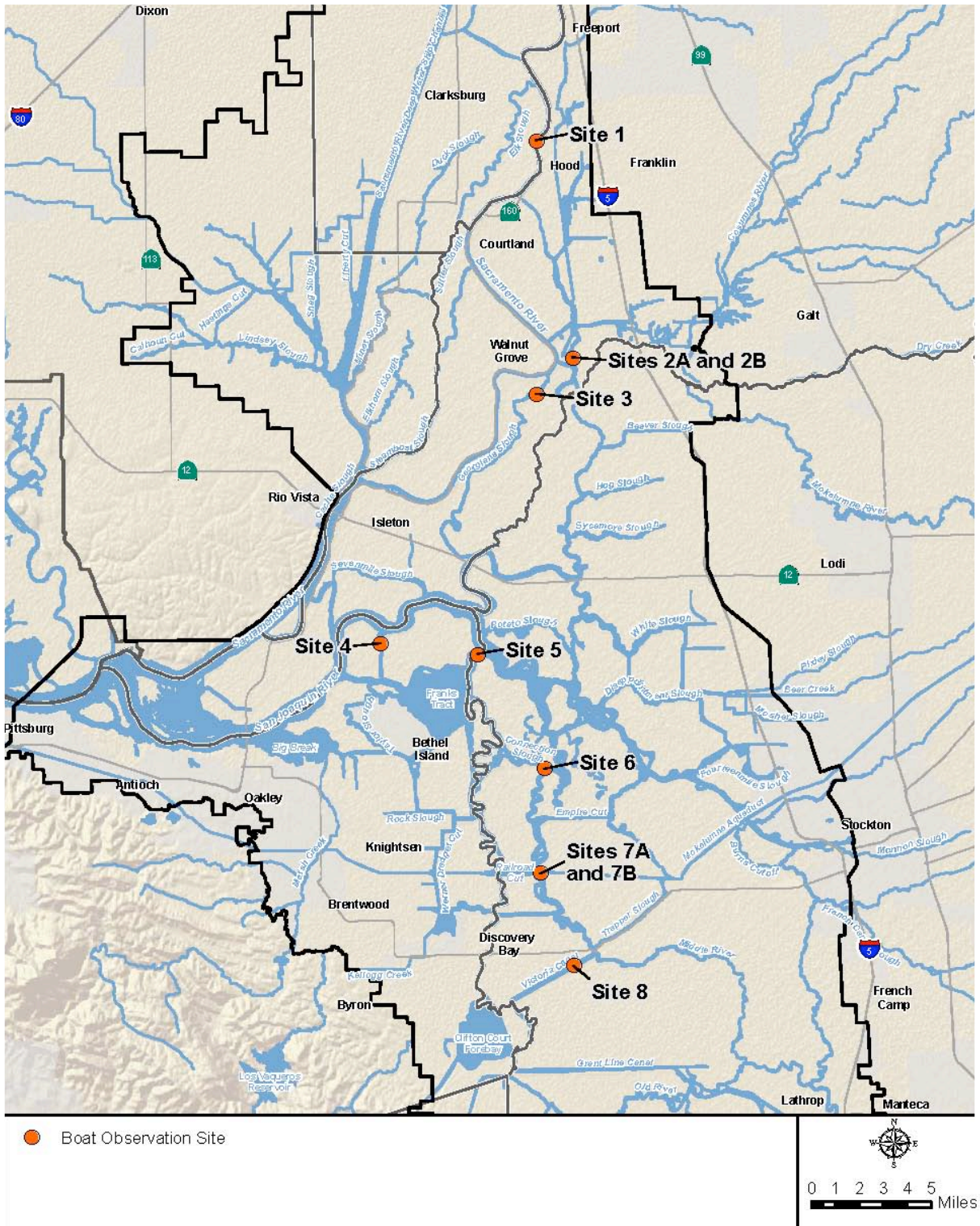
Figure 2.9-2
Bat Activity in Spring, Summer, and Fall 2009 in the Conveyance Planning Area



Source: Data collected by DHCCP in 2009

BDCP EIR/EIS
 Unique ID: AECOM003 Date Created: 02/01/10

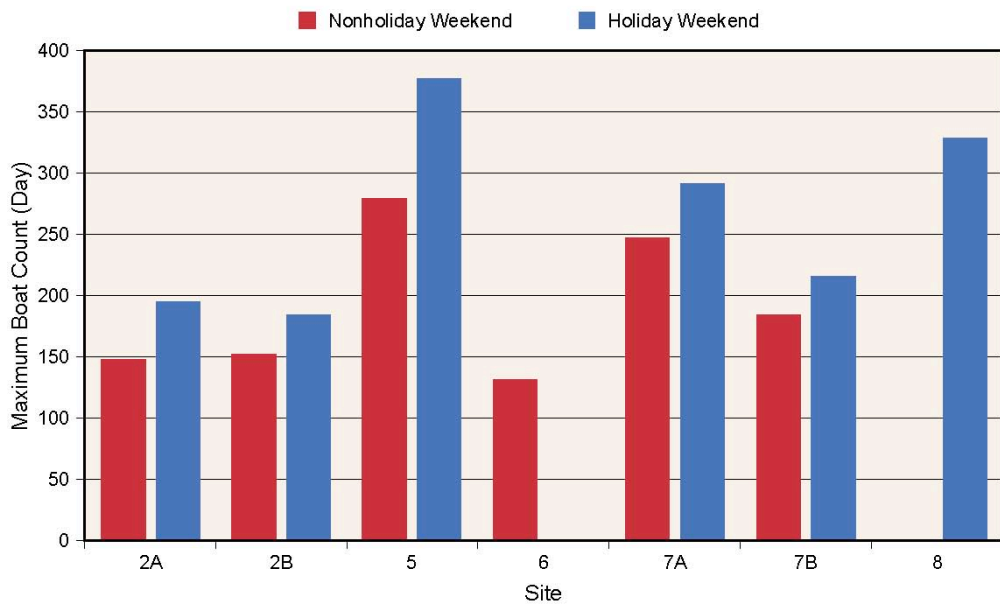
**Figure 3.2-1
 Hourly Boat Traffic Levels Observed**



Source: DHCCP – Boat Observation Sites 2010

BDPC EIR/EIS
 Unique ID: AECOM755 Date Created: 10/14/2010

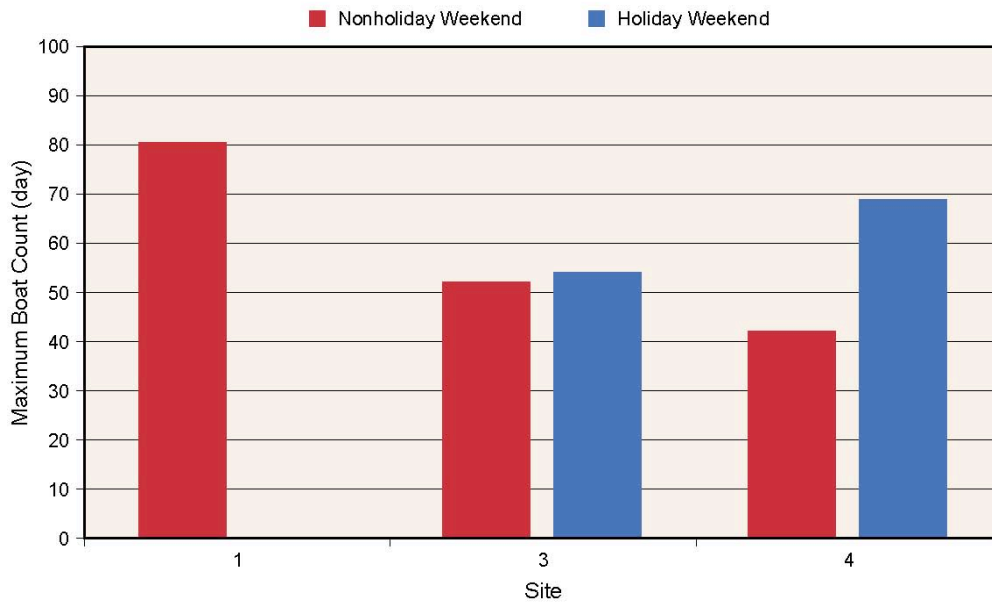
**Figure 5.1-1
 2010 Boat Traffic Observation Sites Map**



Source: Data collected by DHCCP in 2010

BDCP EIR/EIS
 Unique ID: AECOM0732 Date Created: 09/28/2010

**Figure 5.1-2
 Maximum Boat Traffic Observed
 at Sites 2A, 2B, 5, 6, 7A, 7B, and 8 on Weekend**



Source: Data collected by DHCCP in 2010

BDCP EIR/EIS
 Unique ID: AECOM0730 Date Created: 09/28/2010

**Figure 5.1-3
 Maximum Boat Traffic Observed
 at Sites 1, 3, and 4 on Weekend**