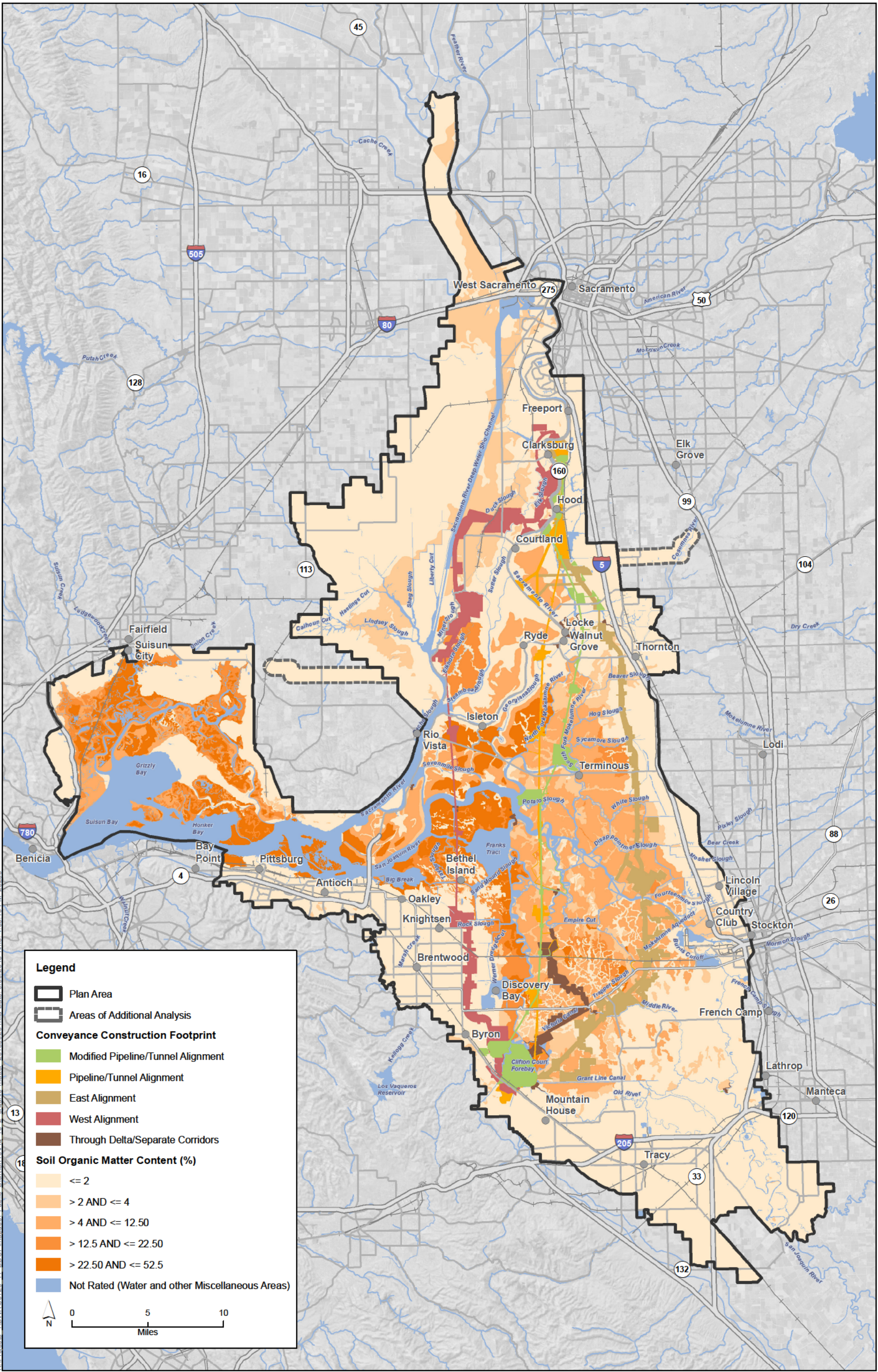


Sources: Plan Area, ICF 2012; Area of Additional Analysis, ICF 2012; Constructability (Rev 10b), DHCCP DWR 2012; Constructability (Rev 2b), DHCCP DWR 2013; Constructability (Rev 3b), DHCCP DWR 2012; Soils, STATSGO 2010.

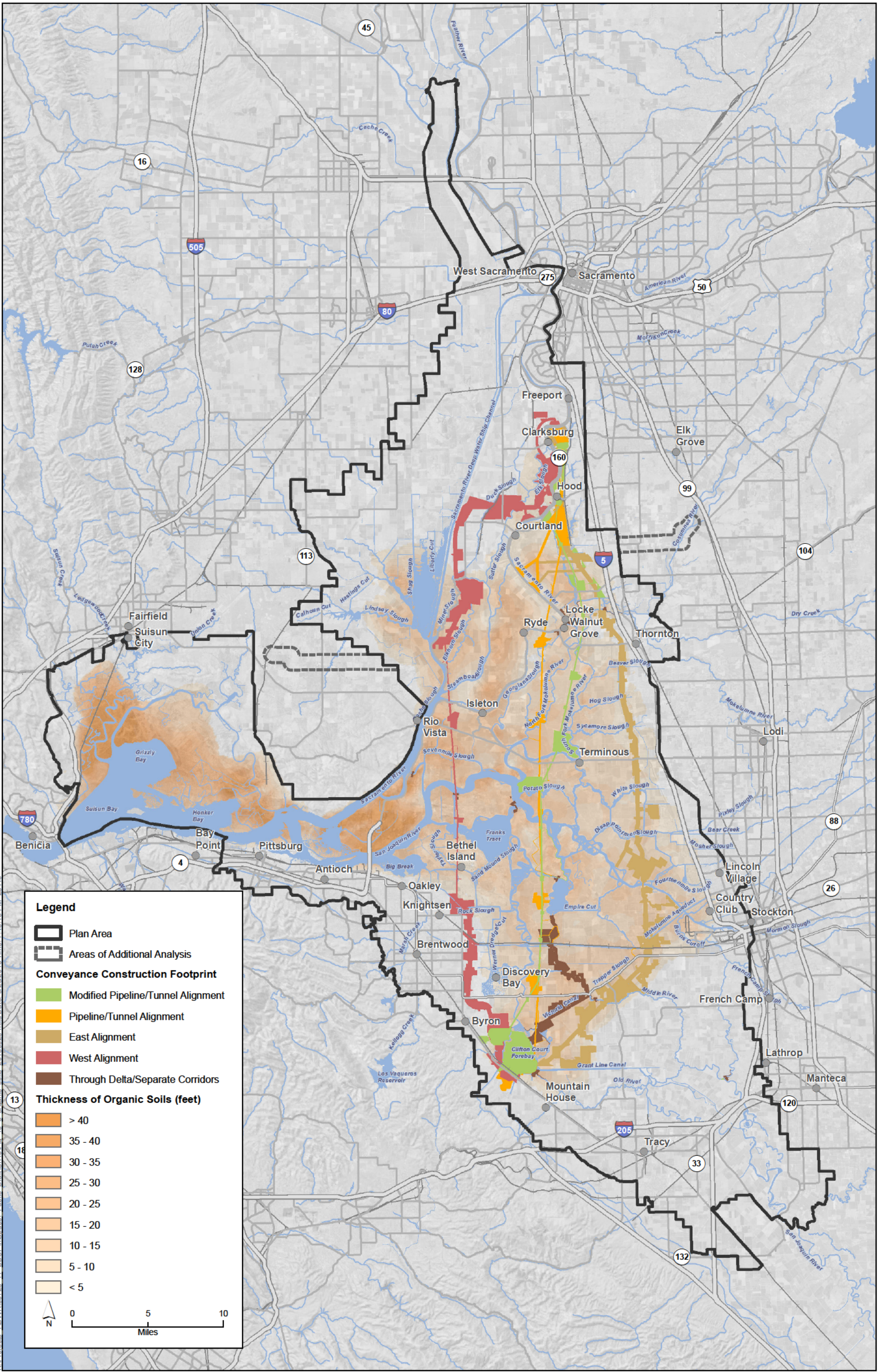
Figure 10-1
Soil Associations in the Plan Area



K:\Projects\1\DW\000726_11_BDC\pman\doc\Public_Draft\Ch10\Fig_10_2_oranic.mxd Date: 9/30/2013 Time: 4:03:19 PM 28266

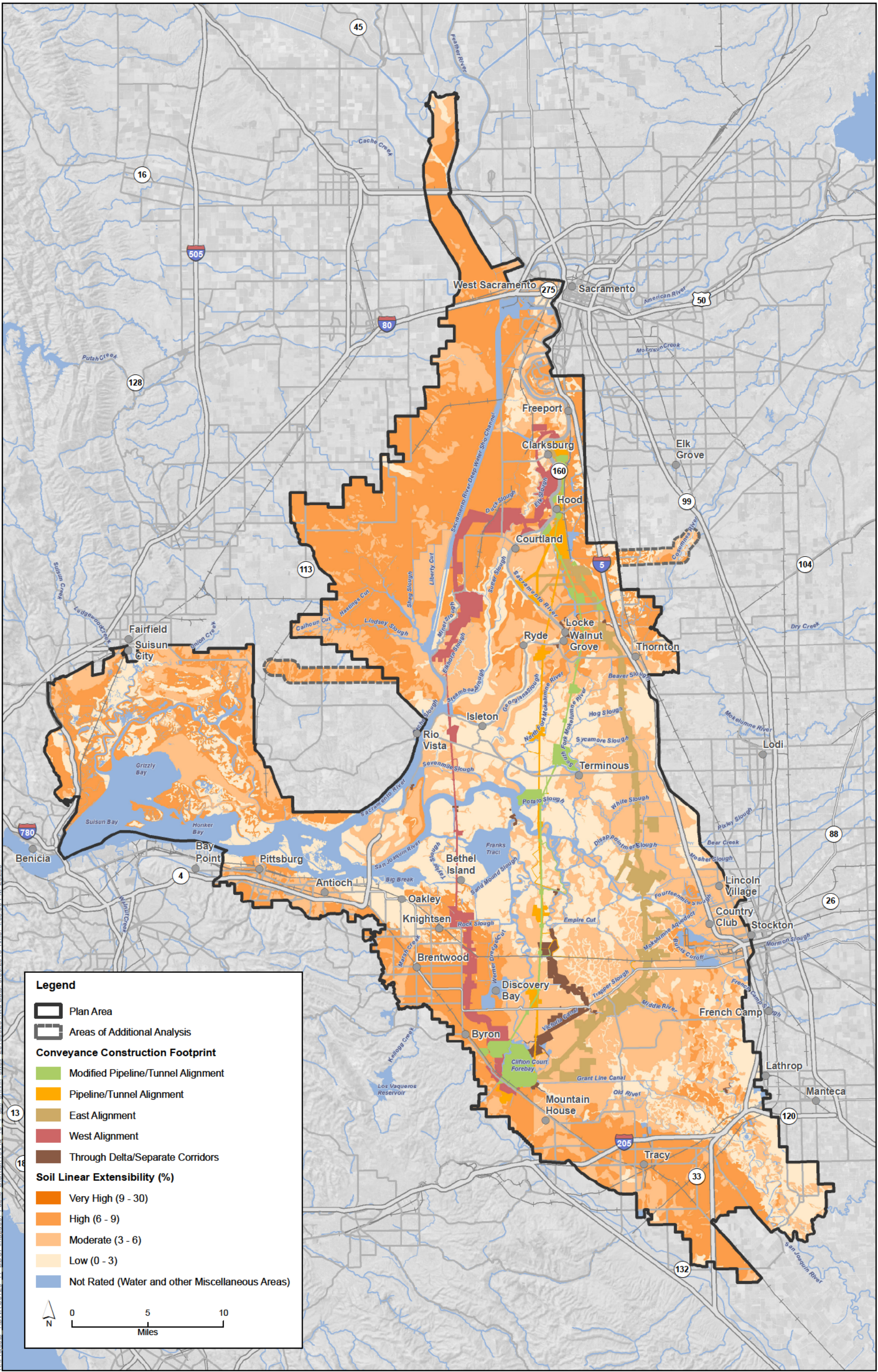
Sources: Plan Area, ICF 2012; Area of Additional Analysis, ICF 2012; Constructability (Rev 10b), DHCCP DWR 2012; Constructability (Rev 2b), DHCCP DWR 2013; Constructability (Rev 3b), DHCCP DWR 2012; Soils, SSURGO 2010

Figure 10-2
Soil Organic Matter Content in Near-Surface Soils



Sources: Plan Area, ICF 2012; Area of Additional Analysis, ICF 2012; Constructability (Rev 10b), DHCCP DWR 2012; Constructability (Rev 2b), DHCCP DWR 2013; Constructability (Rev 3b), DHCCP DWR 2012;

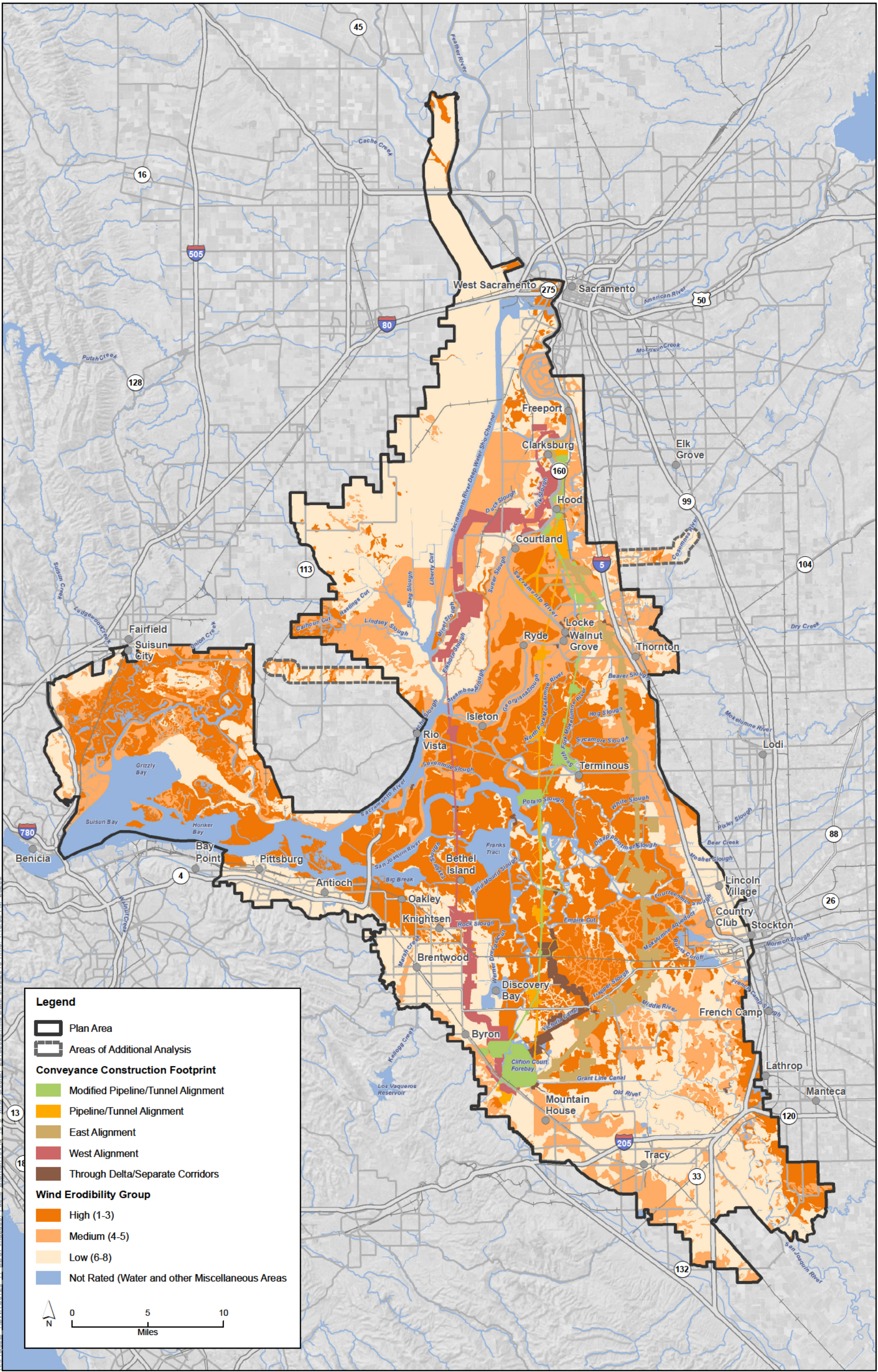
Figure 10-3
Thickness of Organic Soils



K:\Projects\1\DW\000726_11_BDC\pman\doc\Public_Draft\Ch10\Fig_10_4_soil_shrink.swell_20130926.mxd Date: 9/30/2013 Time: 4:08:50 PM 28266

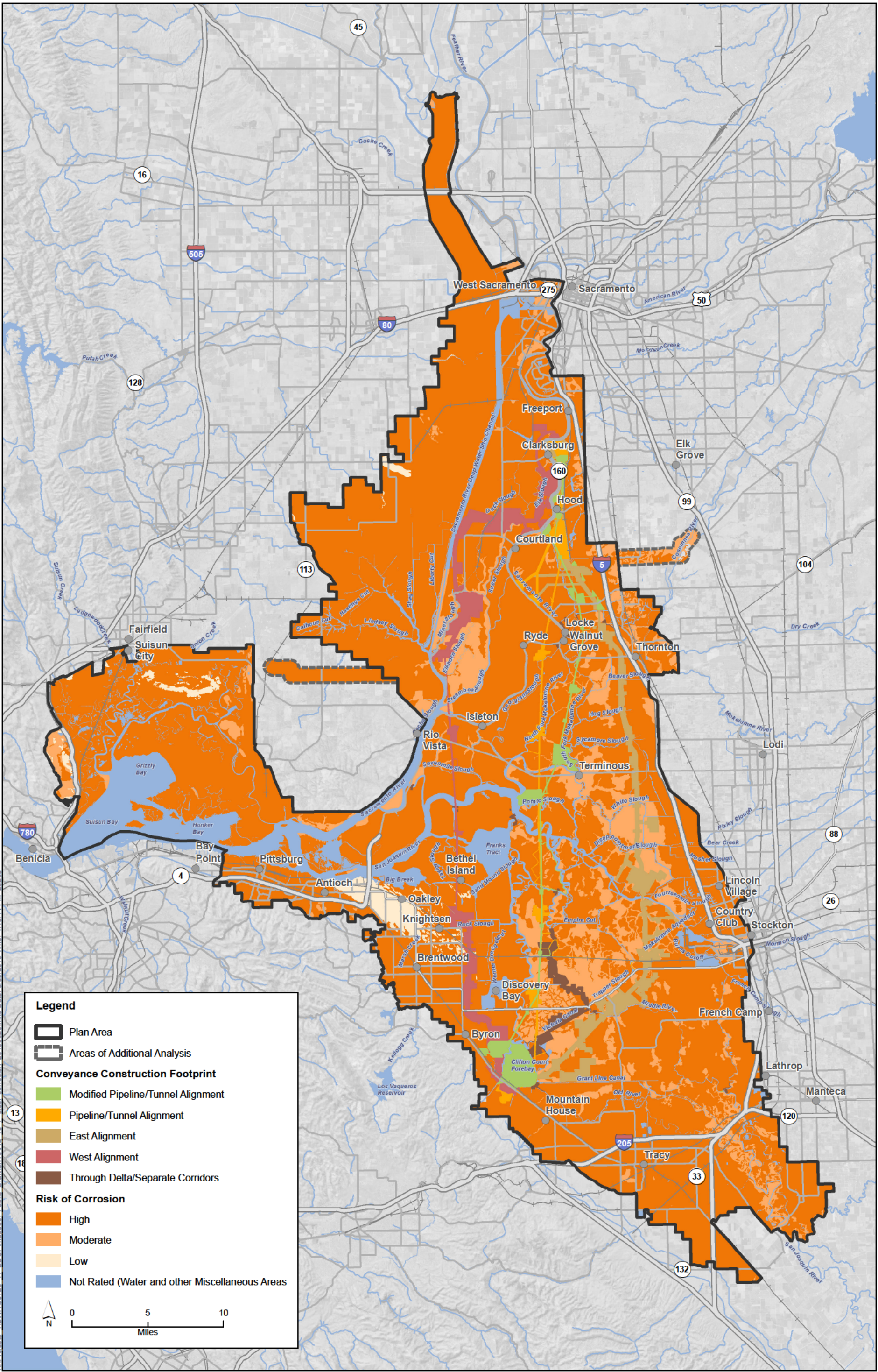
Sources: Plan Area, ICF 2012; Area of Additional Analysis, ICF 2012; Constructability (Rev 10b), DHCCP DWR 2012; Constructability (Rev 2b), DHCCP DWR 2013; Constructability (Rev 3b), DHCCP DWR 2012; Soils, SSURGO 2010

Figure 10-4
Soil Shrink-Swell Potential



Sources: Plan Area, ICF 2012; Area of Additional Analysis, ICF 2012; Constructability (Rev 10b), DHCCP DWR 2012; Constructability (Rev 2b), DHCCP DWR 2013; Constructability (Rev 3b), DHCCP DWR 2012; Soils, SSURGO 2010.

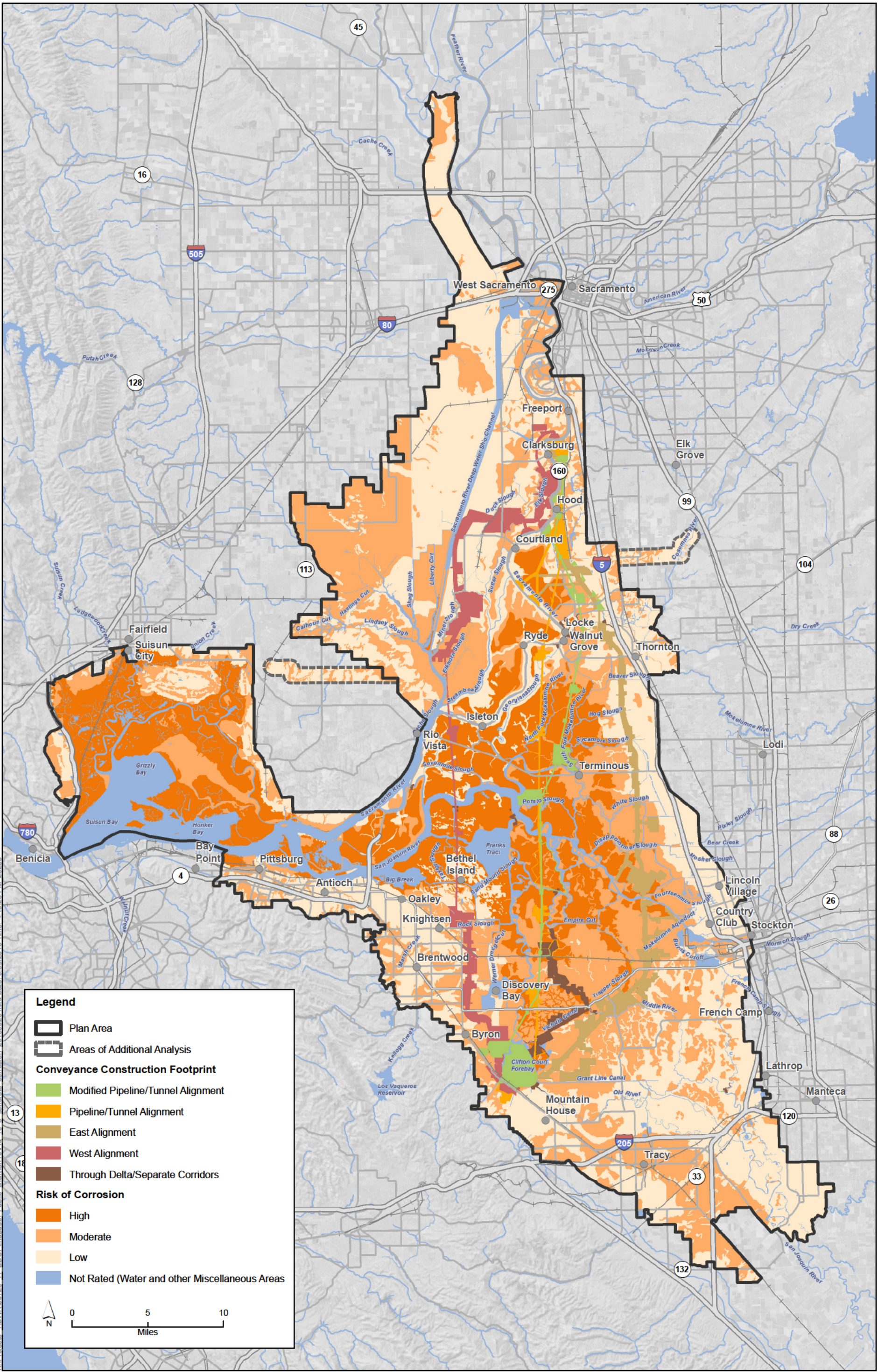
Figure 10-6
Wind Erosion Hazard



K:\Projects\1\DW\000726_11_BDC\pmap\doc\Public_Draft\Ch10\Fig_10_7_steel_corrosion_20130926.mxd Date: 9/30/2013 Time: 4:15:44 PM 282266

Sources: Plan Area, ICF 2012; Area of Additional Analysis, ICF 2012; Constructability (Rev 10b), DHCCP DWR 2012; Constructability (Rev 2b), DHCCP DWR 2013; Constructability (Rev 3b), DHCCP DWR 2012; Soils, SSURGO 2010.

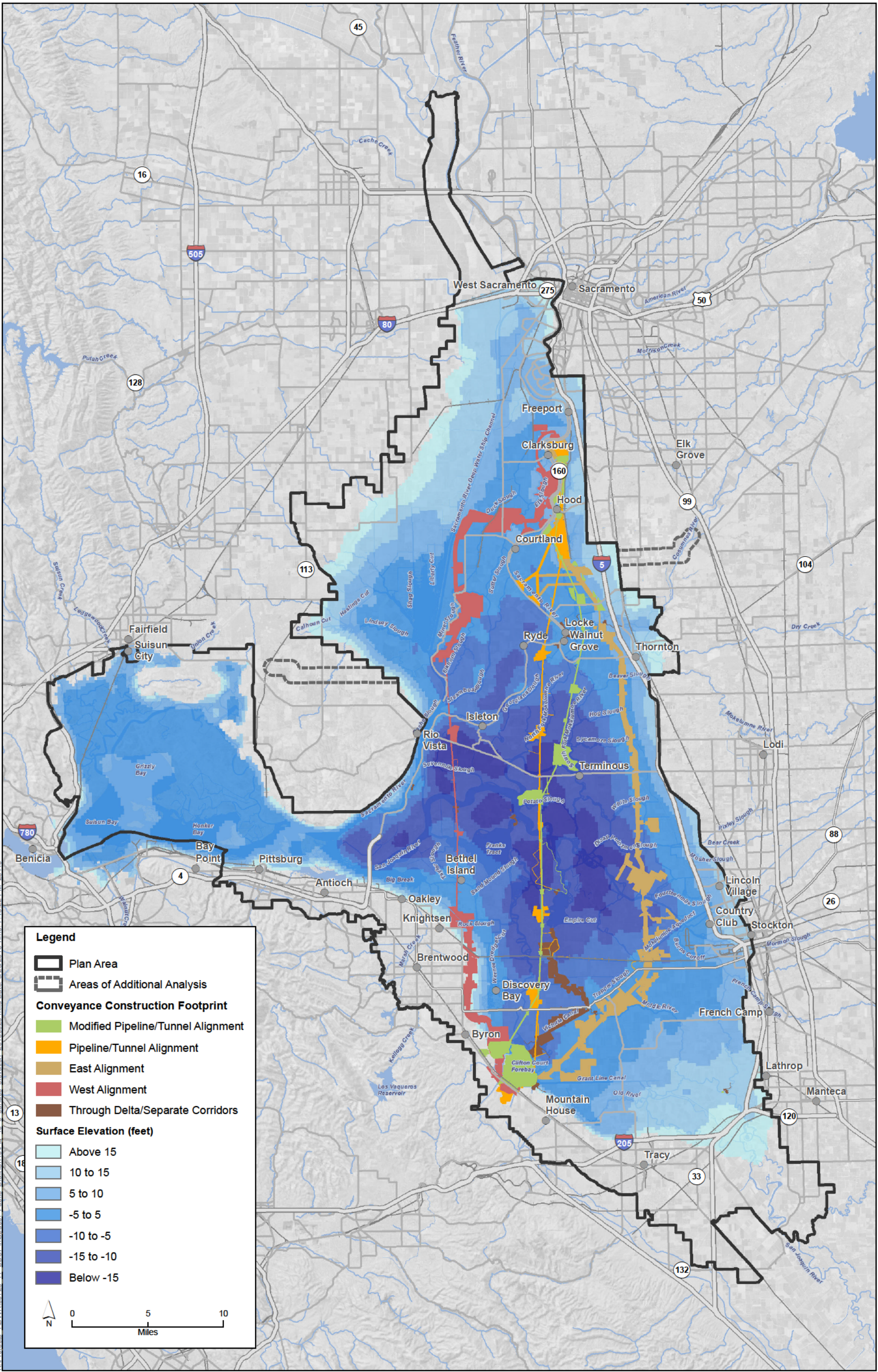
Figure 10-7
Risk of Soil Corrosion to Uncoated Steel



K:\Projects\1\DW\000726_11_BDC\pmapdoc\20130926.mxd Date: 9/30/2013 Time: 4:16:26 PM 28266

Sources: Plan Area, ICF 2012; Area of Additional Analysis, ICF 2012; Constructability (Rev 10b), DHCCP DWR 2012; Constructability (Rev 2b), DHCCP DWR 2013; Constructability (Rev 3b), DHCCP DWR 2012; Soils, SSURGO 2010.

Figure 10-8
Risk of Soil Corrosion to Concrete



K:\Projects\1\DW\00728_11_BDC\pmapdoc Public Draft\Ch10\Fig_10_9_surface_elevation_20130926.mxd Date: 9/26/2013 Time: 7:46:22 PM 25110

Sources: Plan Area, ICF 2012; Area of Additional Analysis, ICF 2012; Constructability (Rev 10b), DHCCP DWR 2012; Constructability (Rev 2b), DHCCP DWR 2013; Constructability (Rev 3b), DHCCP DWR 2012; Elevation, URS 2008.

Figure 10-9
Subsidence in the Delta