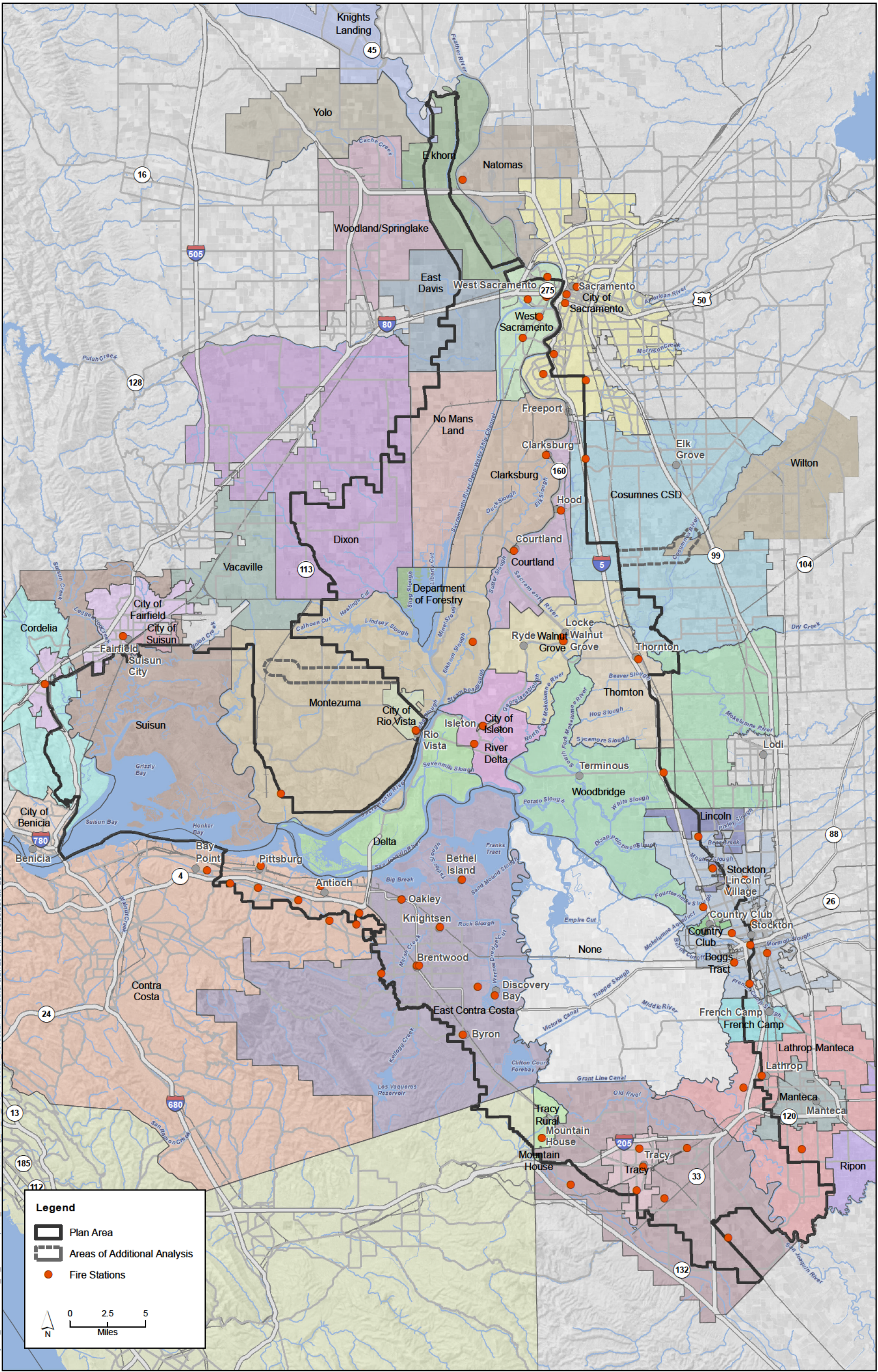


K:\Projects\_1\DW\00726\_11\_BDCP\mapdoc\Public\_Draft\Ch20\Fig\_20\_01\_Law Enforcement\_Hos\_20130722.mxd Date: 9/18/2013 Time: 2:22:44 AM 251110

Sources: Plan Area, ICF 2012; Area of Additional Analysis, ICF 2012; Law Enforcement Facilities, HDR 2011; Hospitals, HDR 2011.

**Figure 20-1**  
**Law Enforcement Facilities and Hospitals**



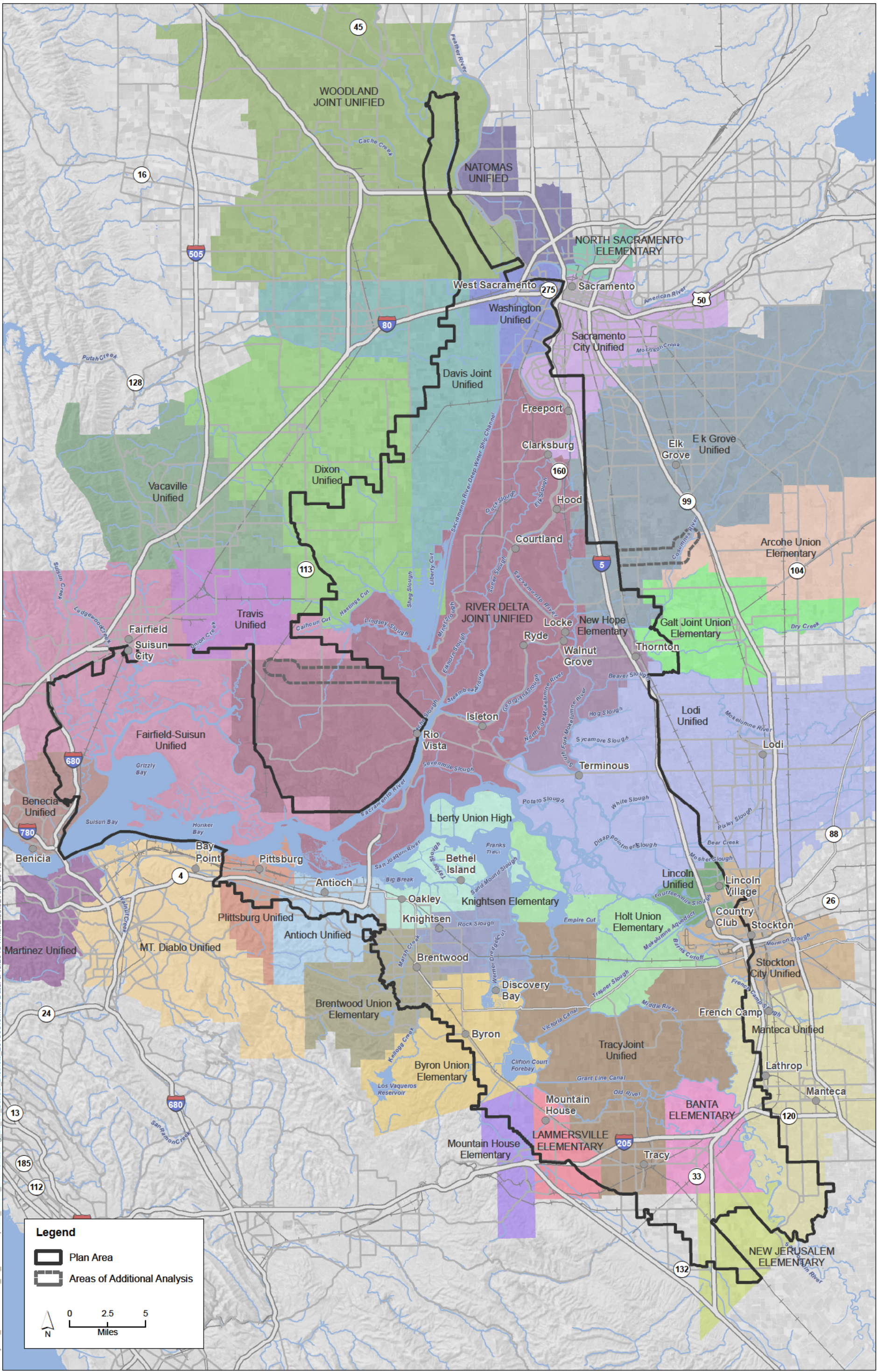


K:\Projects\_1\DW\00726\_11\_BDC\pmapdoc\Public Draft\Ch20\Fig\_20\_02\_Fire Protection 20130927.mxd Date: 9/27/2013 Time: 8:55:53 AM 25110

Sources: Plan Area, ICF 2012; Area of Additional Analysis, ICF 2012; Fire Districts and Stations HDR 2011.

**Figure 20-2**  
**Fire Protection Entities and Facilities**



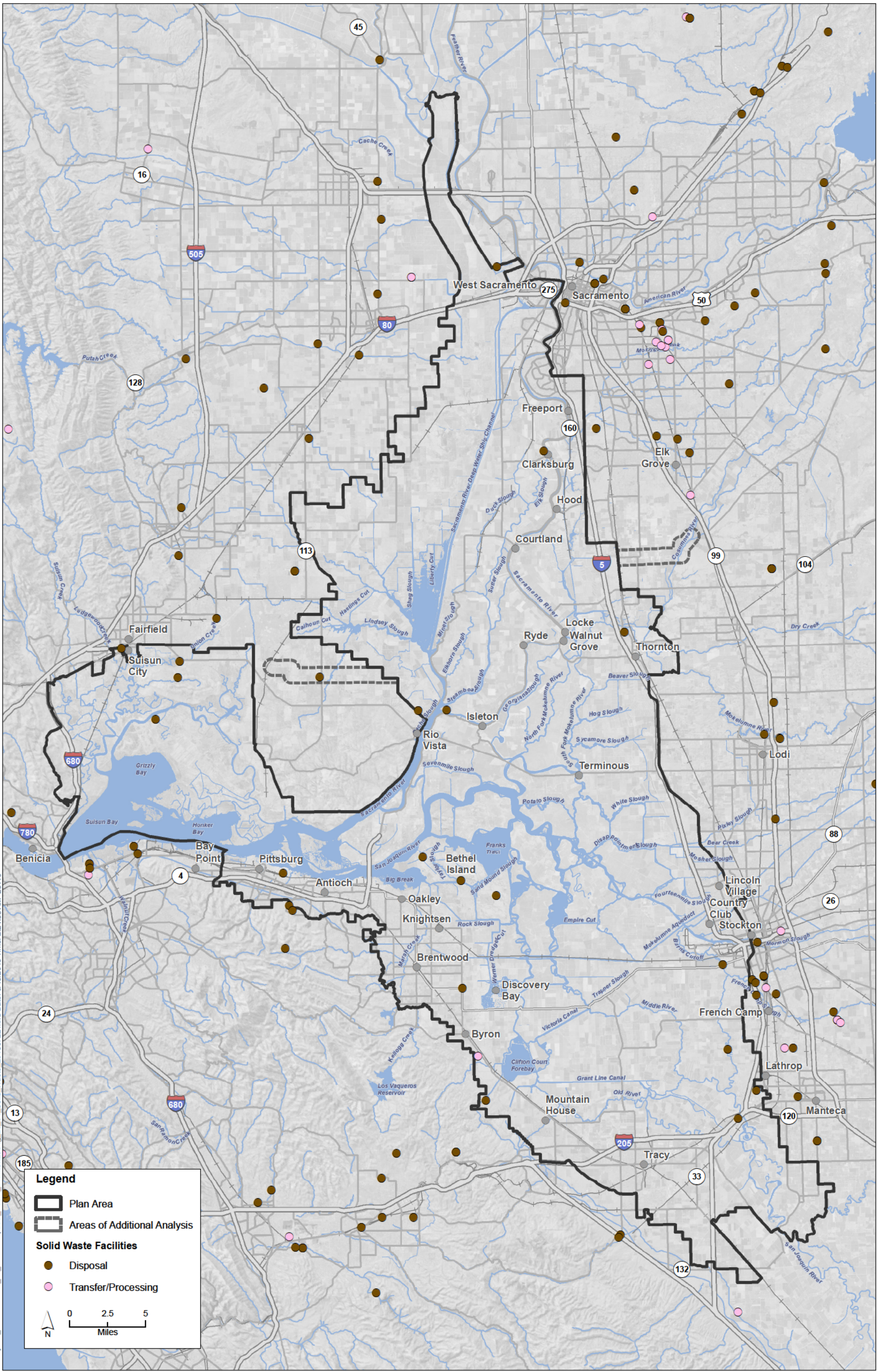


K:\Projects\_1\DW\00726\_11\_BDCP\mapdoc\Public\_Draft\Ch20\Fig. 20-3\_School\_Districts\_20130816.mxd Date: 9/18/2013 Time: 2:30:02 AM 25110

Sources: Plan Area, ICF 2012; Area of Additional Analysis, ICF 2012; School Districts, U.S. Census Bureau 2008.

**Figure 20-3**  
**School Districts**



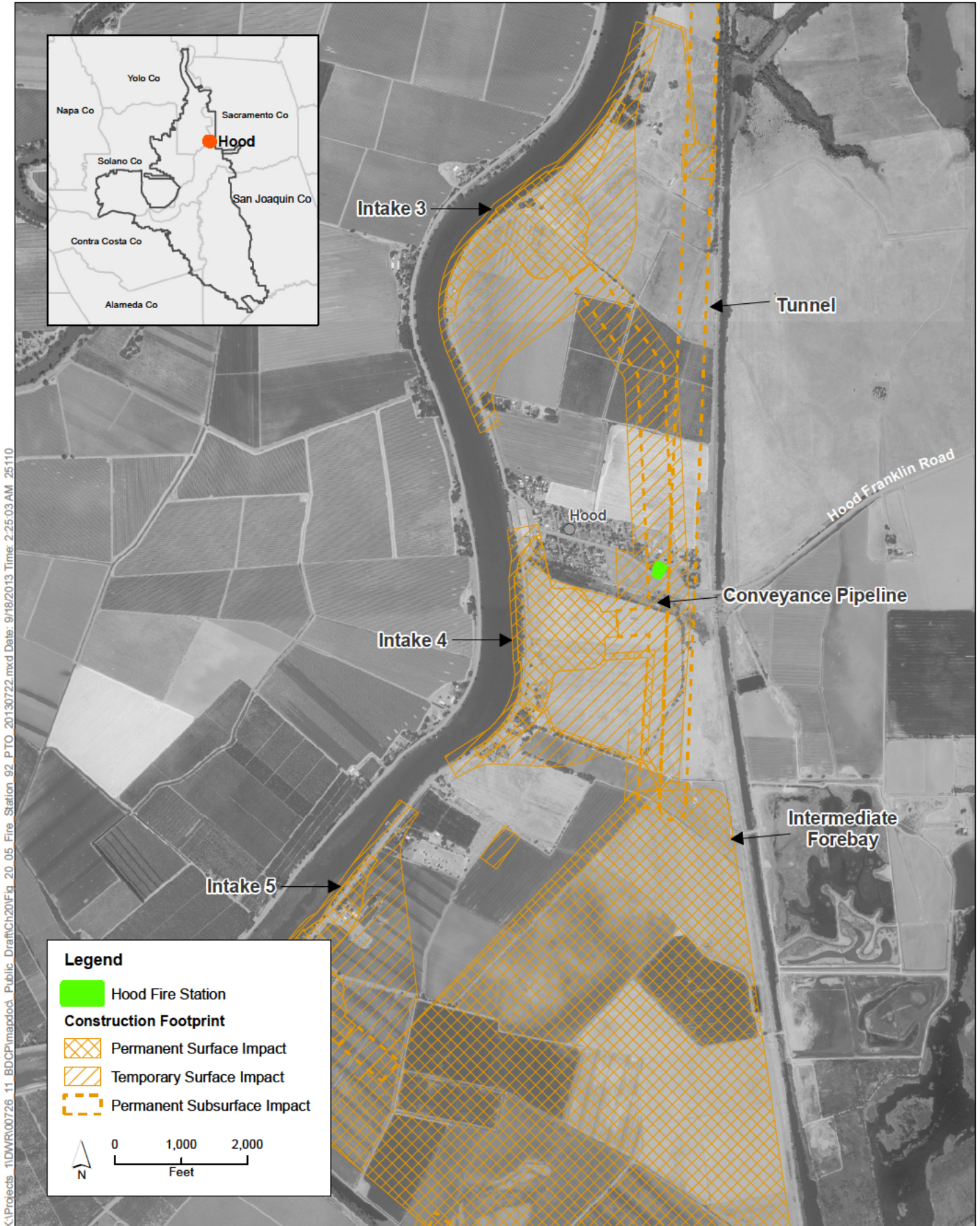


K:\Projects\_1\DW\00726\_11\_BDCP\mapdoc\Public Draft\Ch20\Fig 20\_04\_Solid Waste\_20130722.mxd Date: 9/18/2013 Time: 2:24:38 AM 25110

Sources: Plan Area, ICF 2012; Solid Waste, HDR 2011

**Figure 20-4**  
**Solid Waste Facilities**

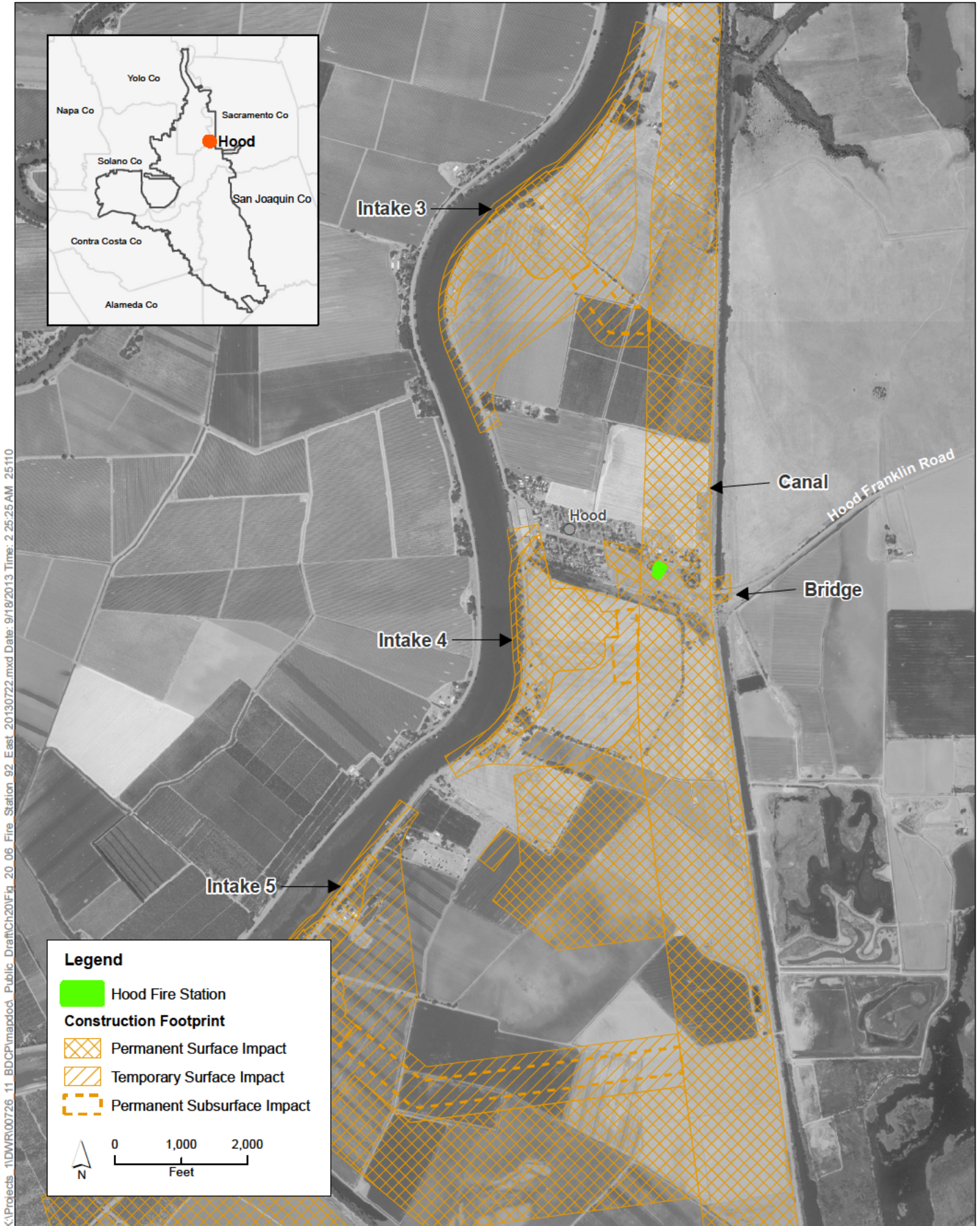




Sources: Plan Area, ICF 2012; Constructability (Rev10b), DHCCP DWR 2012

**Figure 20-5**  
**Conflict with the Hood Fire Station Associated with the Pipeline/Tunnel Alignment (Alternatives 1A, 2A, 6A, 7, and 8)**





Sources: Plan Area, ICF 2012; Constructability (Rev10b), DHCCP DWR 2012

**Figure 20-6**  
**Conflict with the Hood Fire Station Associated**  
**with the East Alignment (Alternatives 1B, 2B, and 6B)**