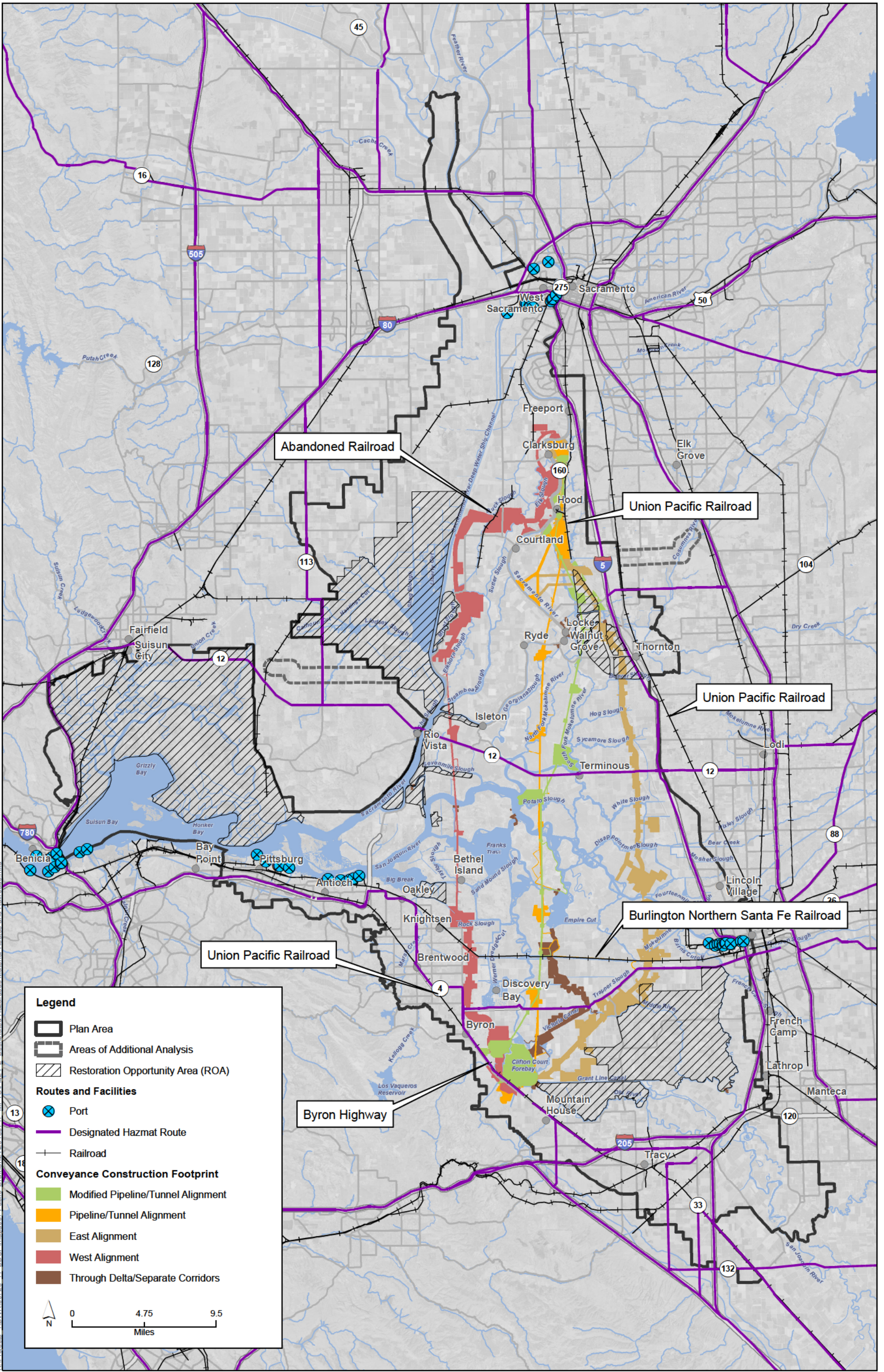


K:\Projects\1\DW\00726\_11\_BDCP\mactoc\Public\_Draft\Ch24\20130717\_MPPTO\Fig24\_1\_Oil and Gas Processing Facilities\_Arc10.mxd

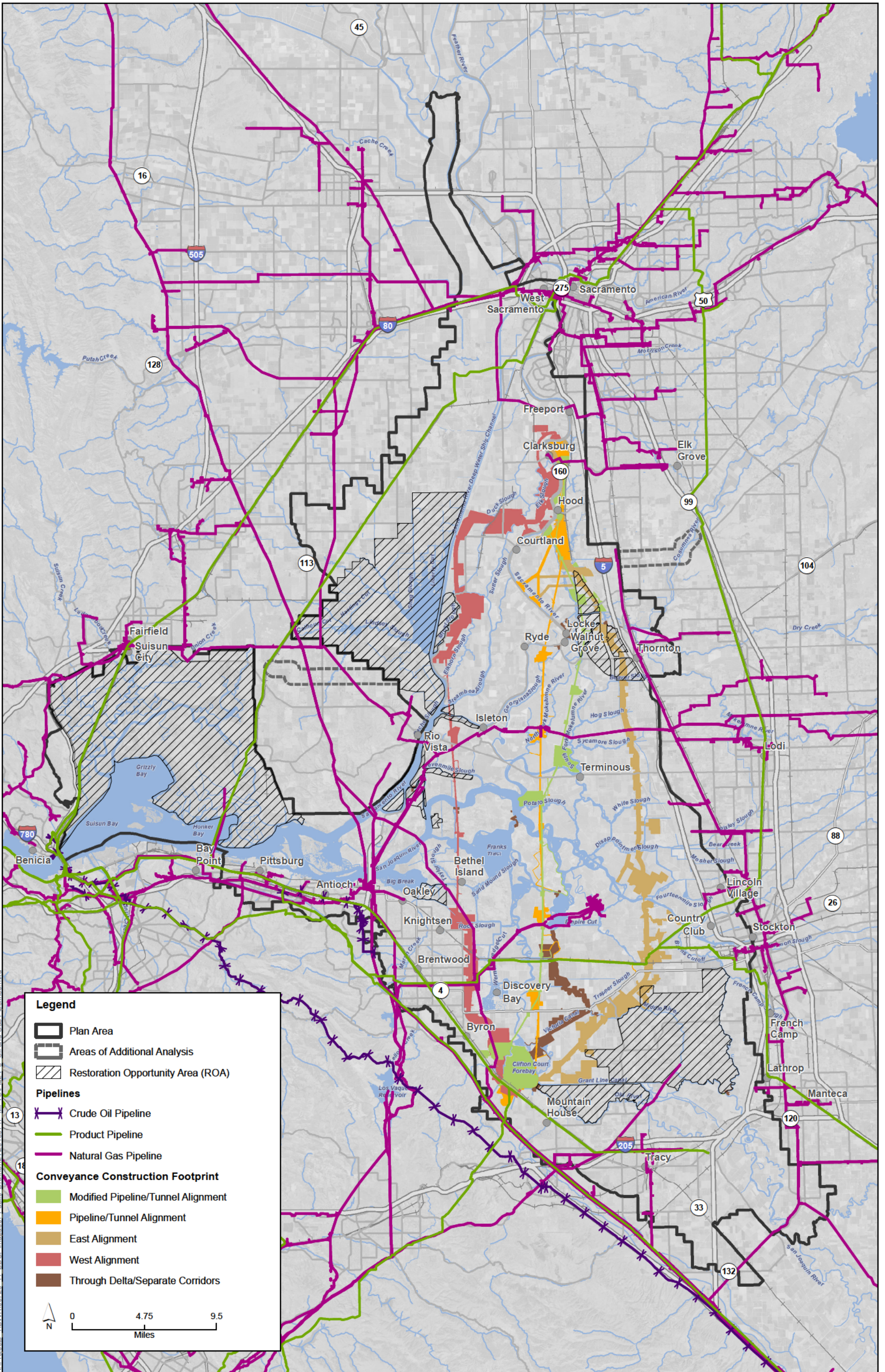
Sources: Plan Area, ICF 2012; Area of Additional Analysis, ICF 2012; ROA, SAIC 2010; CA Gas Compressor Stations, HDR 2010; CA Gas Storage Facilities, HDR 2010; Oil Refinery Terminals, CEC 2005; Constructability (Rev 10), DHCCP DWR 2012; Constructability (Rev 3b), DHCCP DWR 2012.

**Figure 24-1**  
**Oil and Gas Processing Facilities**



Sources: Plan Area, ICF 2012; Area of Additional Analysis, ICF 2012; ROA, SAIC 2010; Ports, HDR 2011; Railroads, CASIL 2010; RITA Hazmat Routes, RITA/BTS NTAD 2006; Constructability (Rev 10), DHCCP DWR 2012; Constructability (Rev 3b), DHCCP DWR 2012

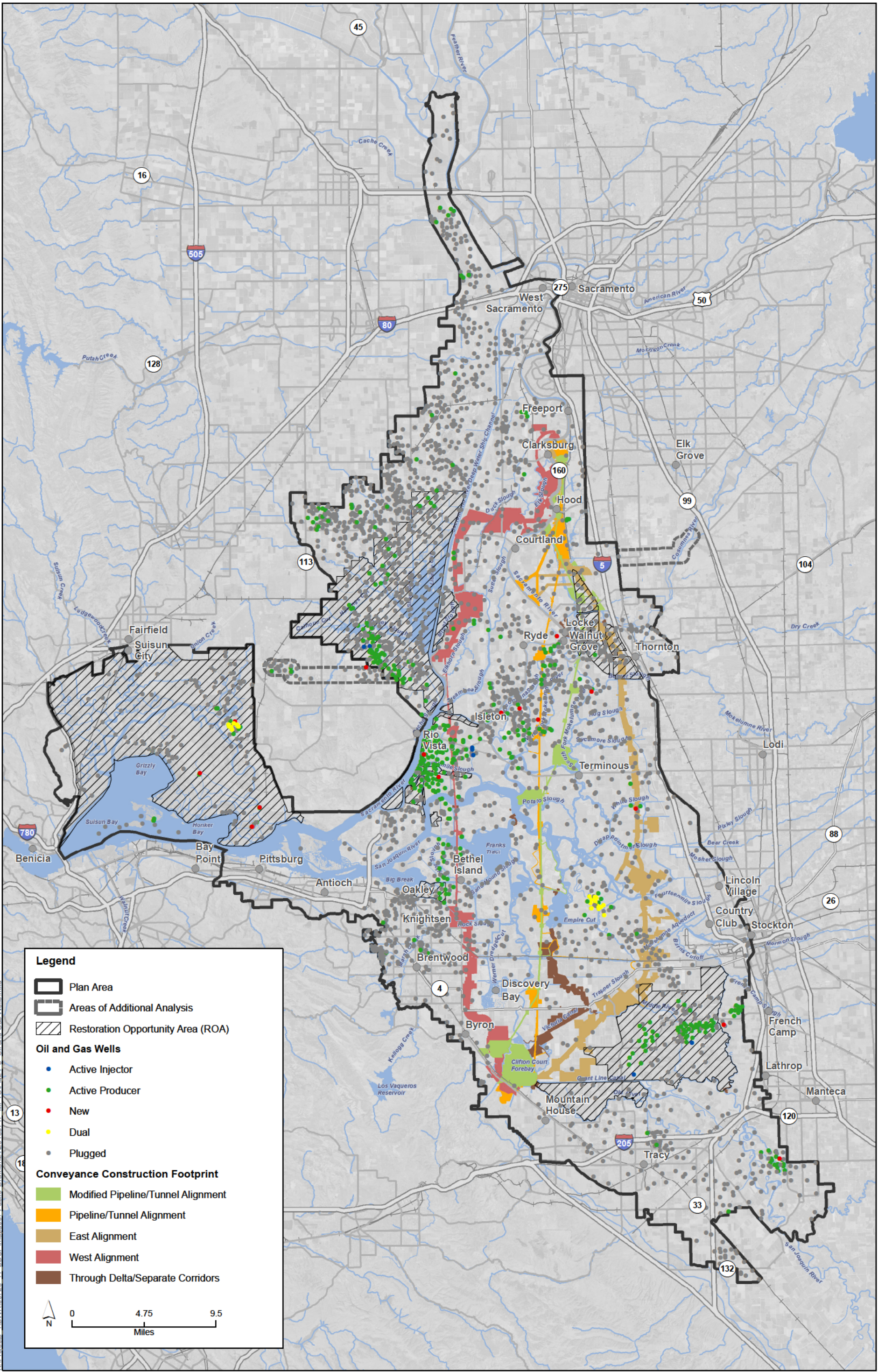
**Figure 24-2**  
**Designated Hazardous Material Routes and Railroads**



Sources: Plan Area, ICF 2012; Area of Additional Analysis, ICF 2012; Pipelines, DWR 2010; ROA, SAIC 2010; Constructability (Rev 10), DHCCP DWR 2012; Constructability (Rev 3b), DHCCP DWR 2012.

**Figure 24-3**  
**Oil and Gas Pipelines**



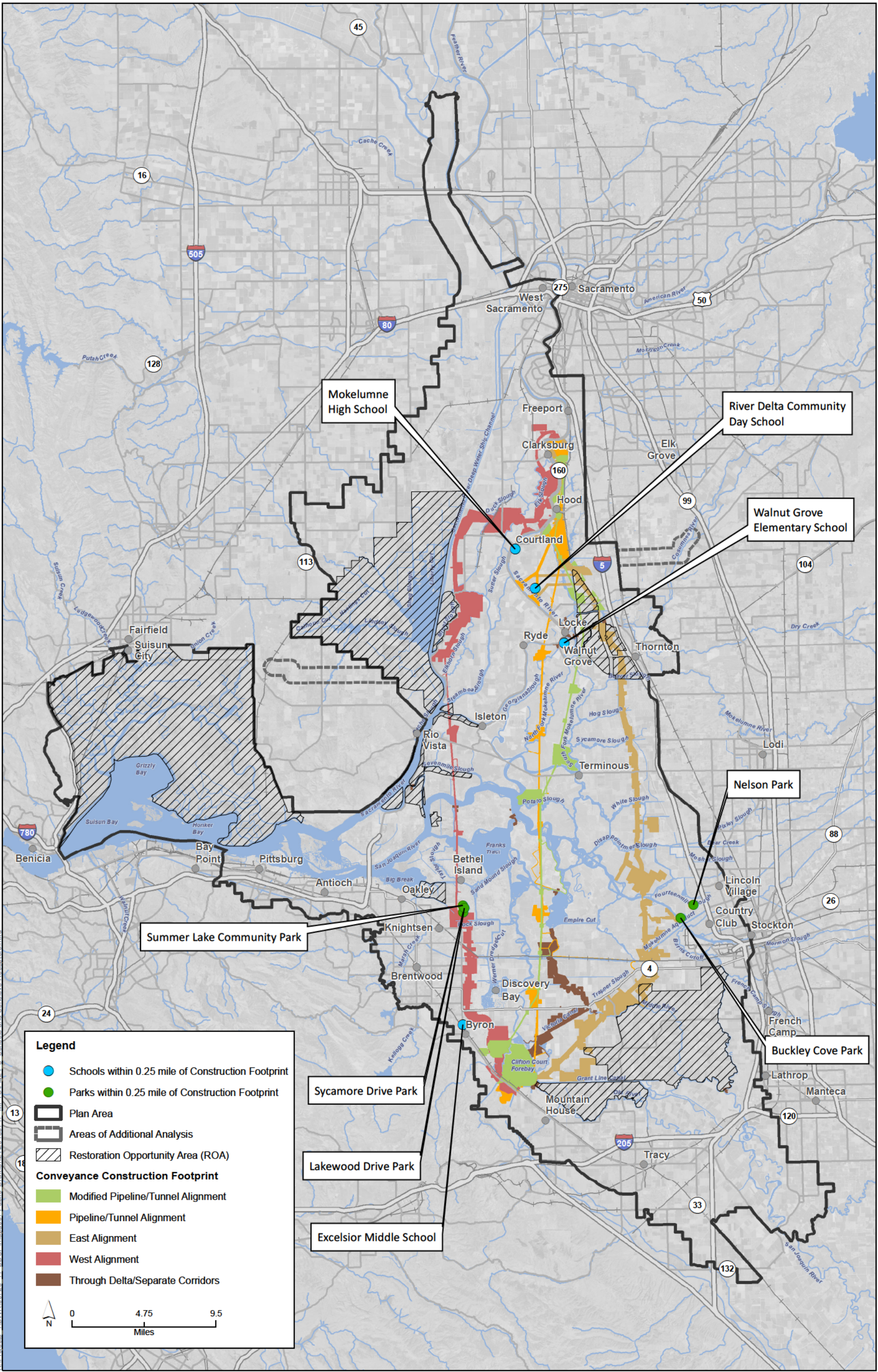


Sources: Plan Area, ICF 2012; Area of Additional Analysis, ICF 2012; ROA, SAIC 2010; Oil/Gas Wells, DOC 2009; Constructability (Rev 10), DHCCP DWR 2012; Constructability (Rev 3b), DHCCP DWR 2012.

**Figure 24-5**  
**Oil and Gas Wells**



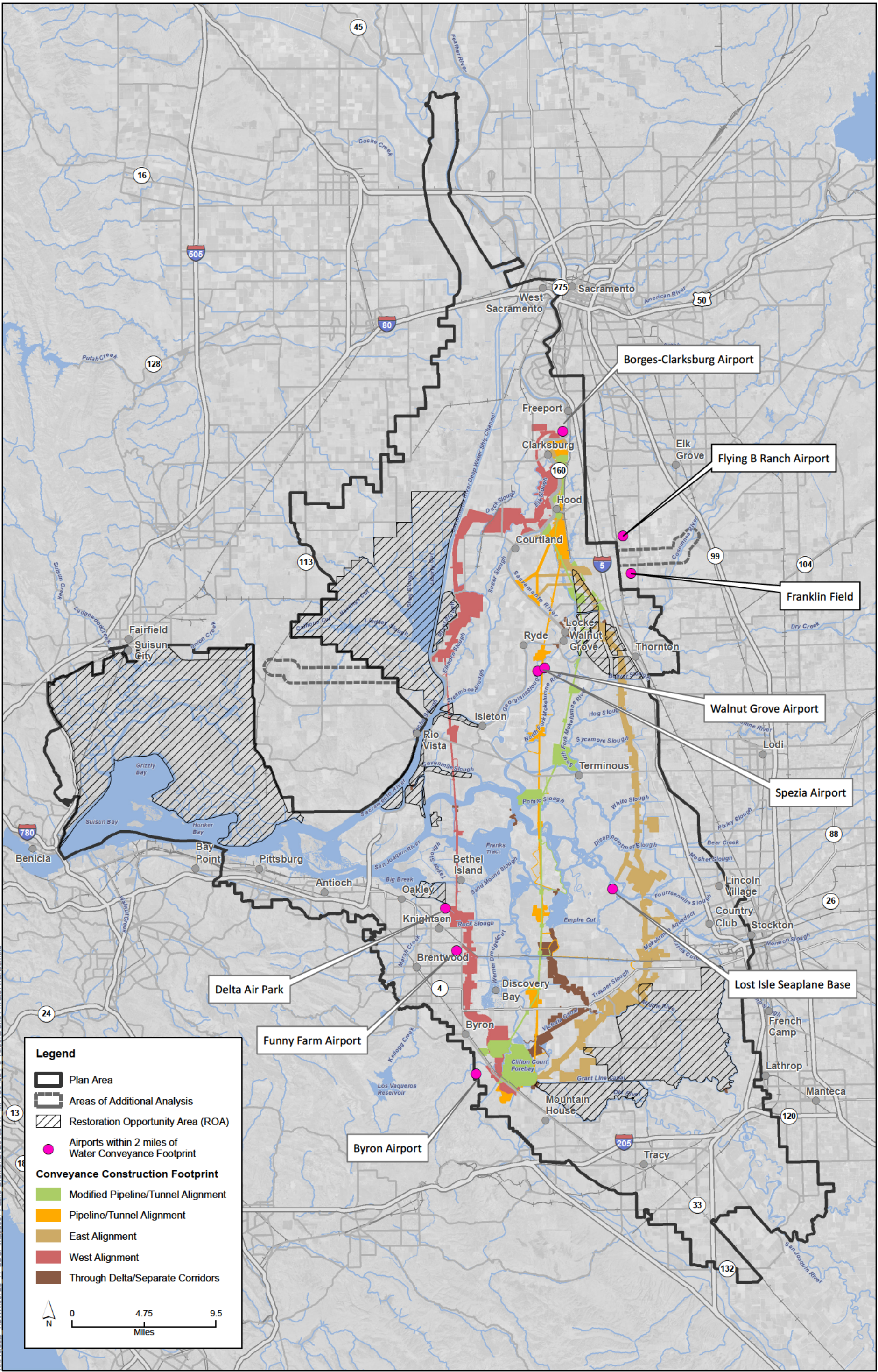




Sources: Plan Area, ICF 2012; Area of Additional Analysis, ICF 2012; ROA, SAIC 2010; Schools, DWR 2010; Hospitals, DWR 2010; Parks, AECOM 2010; Parks, GreenInfo Network 2011; Parks,USFWS 2011, DWR 2010; Constructability (Rev 10), DHCCP DWR 2012; Constructability (Rev 3b), DHCCP DWR 2012.

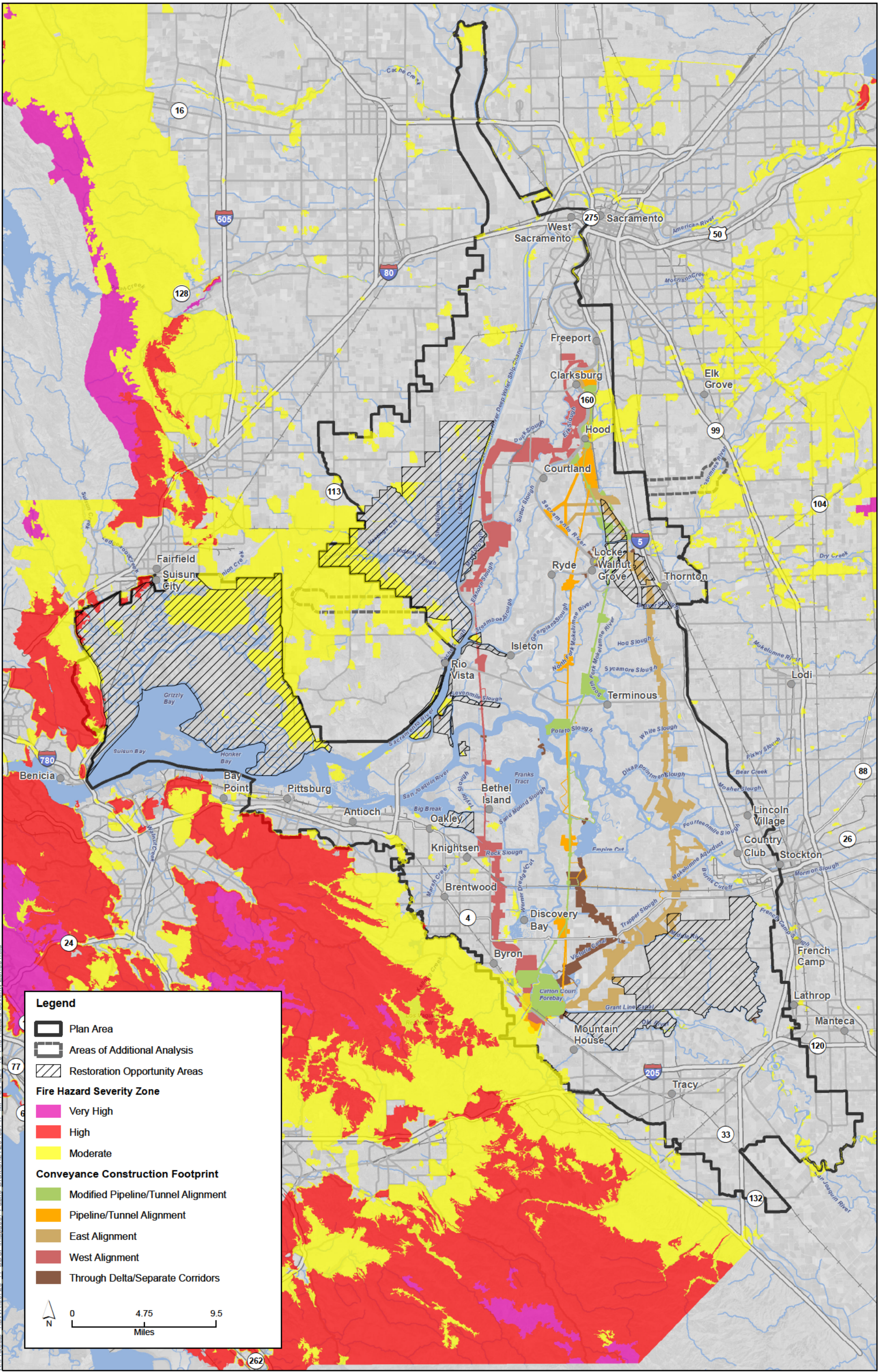
**Figure 24-8**  
**Sensitive Receptors**





Sources: Plan Area, ICF 2012; Area of Additional Analysis, ICF 2012; Airports, ESRI 2010; ROA, SAIC 2010; Constructability (Rev 10), DHCCP DWR 2012; Constructability (Rev 3b), DHCCP DWR 2012

**Figure 24-9**  
Airports and Private Airstrips



Sources: Plan Area, ICF 2012; Area of Additional Analysis, ICF 2012; Yolo, Solano, Alameda, San Joaquin, Sacramento, and Contra Costa Counties, CA Fire and Resource Assessment Program 2011; Constructability (Rev 9c), DHCCP DWR 2012; Constructability (Rev 3a), DHCCP DWR 2012.

**Figure 24-10**  
**Fire Hazard Severity Zones**