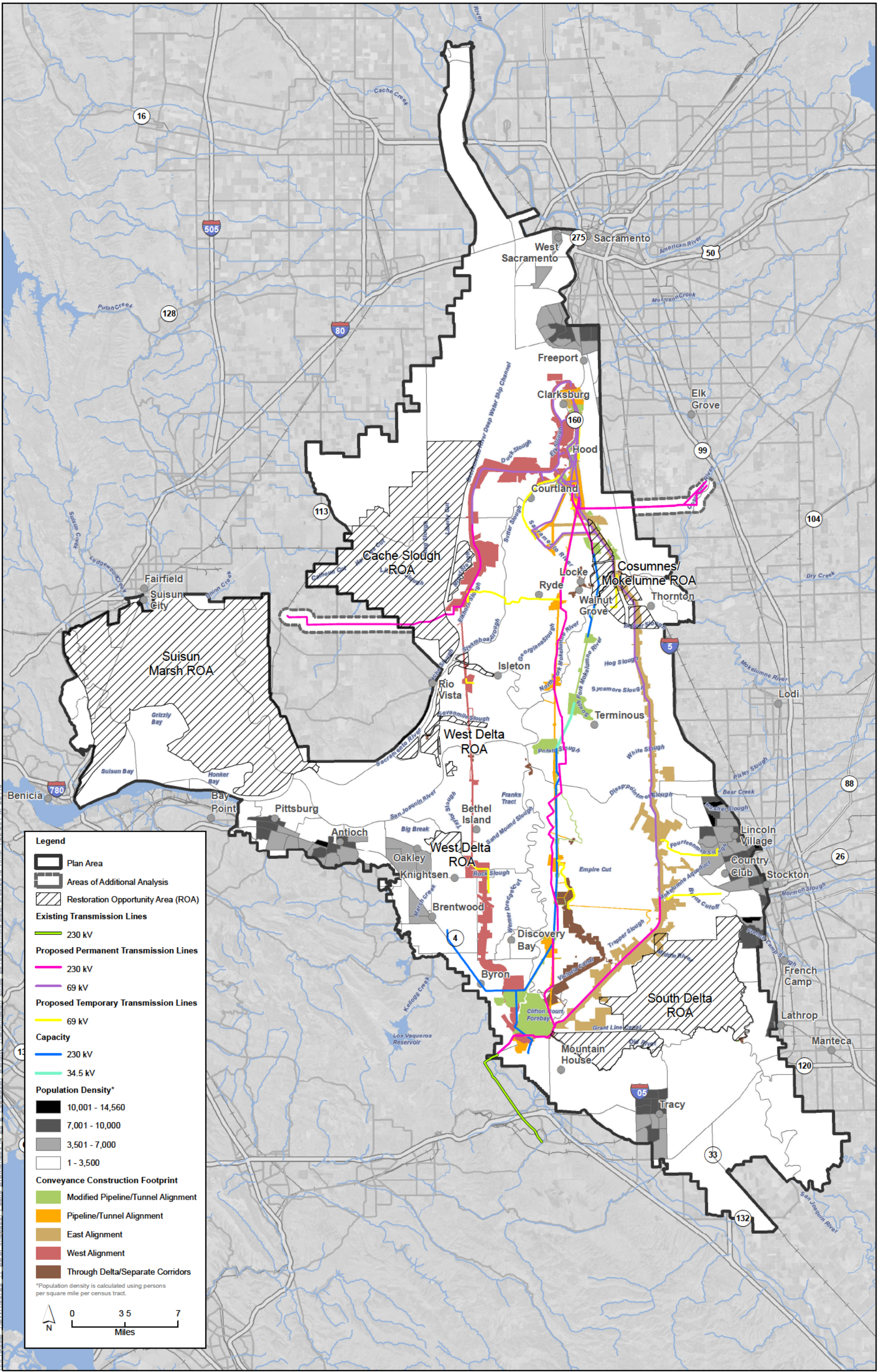


BDCP

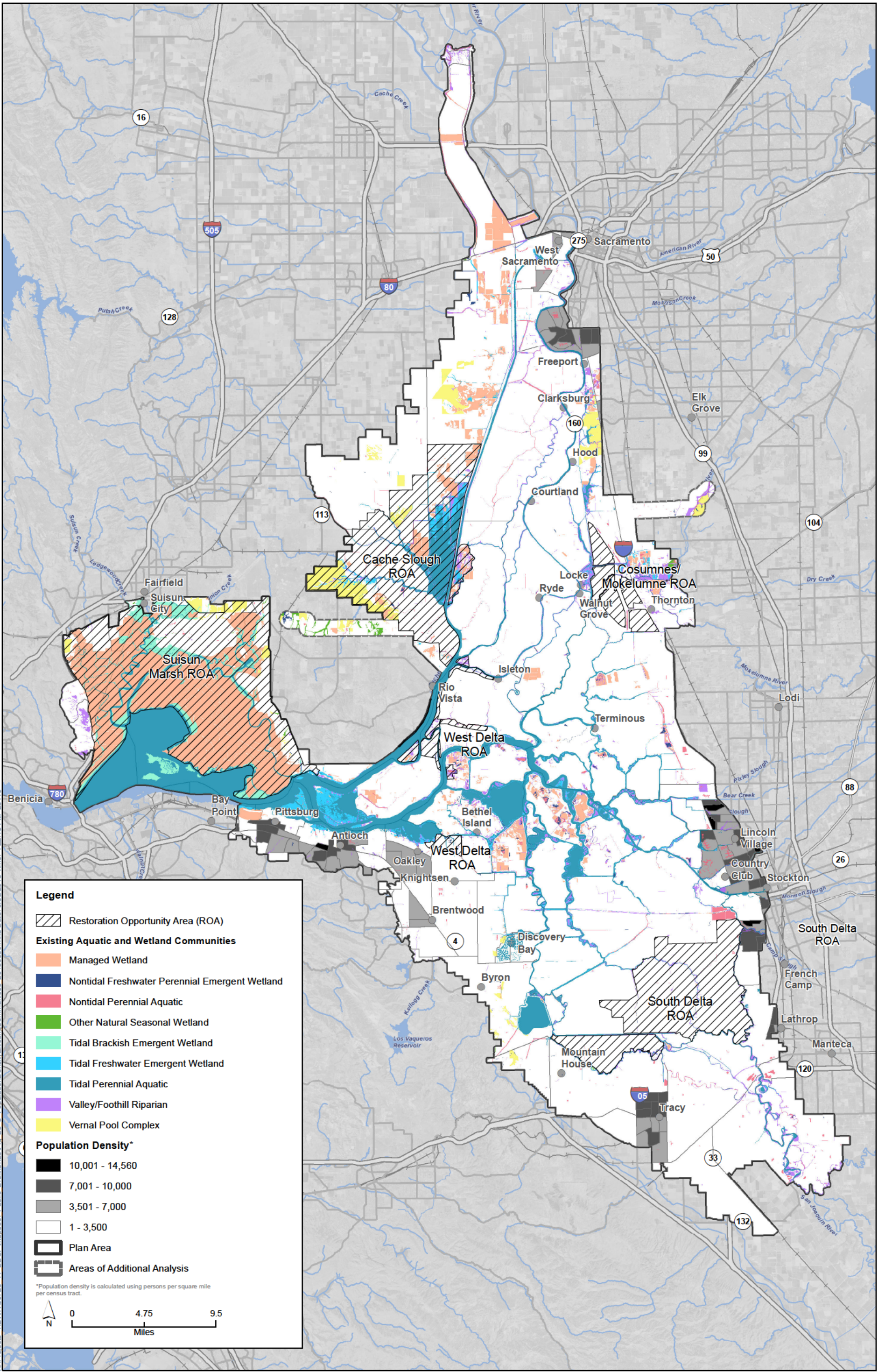
Figure 25-1
Sediment Removal Process at Intakes



K:\Projects\1\DW\00726_11_BDCP\mapdoc\Public_Draft\Ch25\Fig_25_2_Population_Density_Transmission_Lines_20130930.mxd Date: 9/30/2013 Time: 4:22:20 PM 25110

Sources: Plan Area, ICF 2012; Area of Additional Analysis, ICF 2012; Census Data, U.S. Census Bureau 2010; Plan Area, ICF 2012; Area of Additional Analysis, ICF 2012; Constructability & Utility Linear Features (Rev 10b), DHCCP DWR 2012; Constructability & Utility Linear Features (Rev 2b), DHCCP DWR 2013; Constructability & Utility Linear Features (Rev 3b), DHCCP DWR 2013

Figure 25-2
Population Density and Transmission Lines



Legend

- Restoration Opportunity Area (ROA)

Existing Aquatic and Wetland Communities

- Managed Wetland
- Nontidal Freshwater Perennial Emergent Wetland
- Nontidal Perennial Aquatic
- Other Natural Seasonal Wetland
- Tidal Brackish Emergent Wetland
- Tidal Freshwater Emergent Wetland
- Tidal Perennial Aquatic
- Valley/Foothill Riparian
- Vernal Pool Complex

Population Density*

- 10,001 - 14,560
- 7,001 - 10,000
- 3,501 - 7,000
- 1 - 3,500

- Plan Area
- Areas of Additional Analysis

*Population density is calculated using persons per square mile per census tract.

0 4.75 9.5
Miles

K:\Projects\1\DW\00726_11_BDCP\mapdoc\Public_Draft\Ch25\Fig_25_3_PopulationDensityExistingCommunities_20130930.mxd Date: 9/30/2013 Time: 4:22:18 PM 25110

Sources: Plan Area, ICF 2012; Area of Additional Analysis, ICF 2012; Census Data, U.S. Census Bureau 2010; Natural Communities, ICF 2013

Figure 25-3
Population Density and Aquatic and Wetland Communities