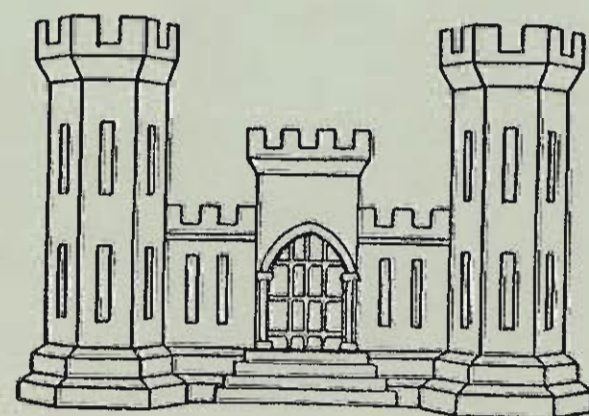


Don Seboldnick

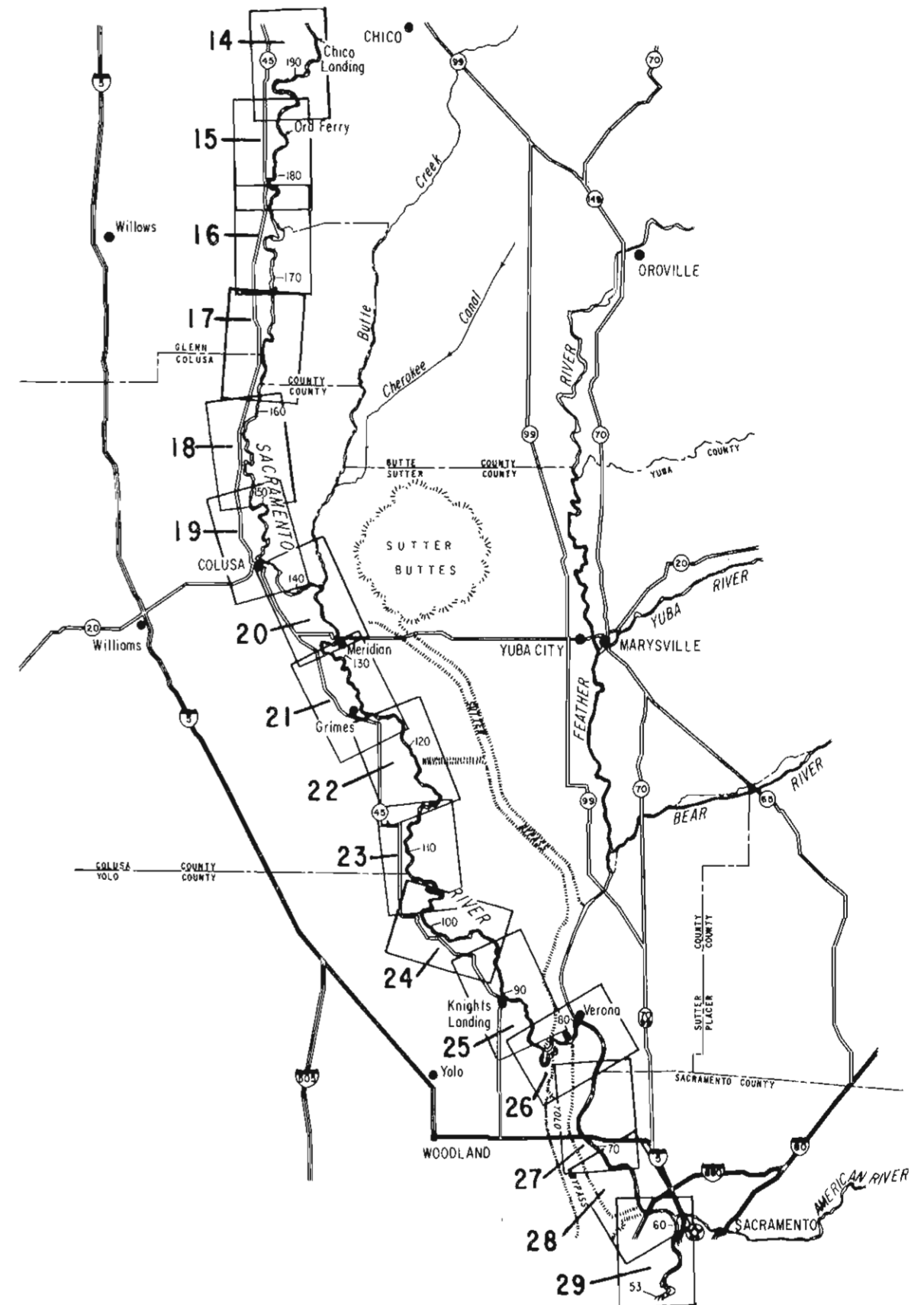
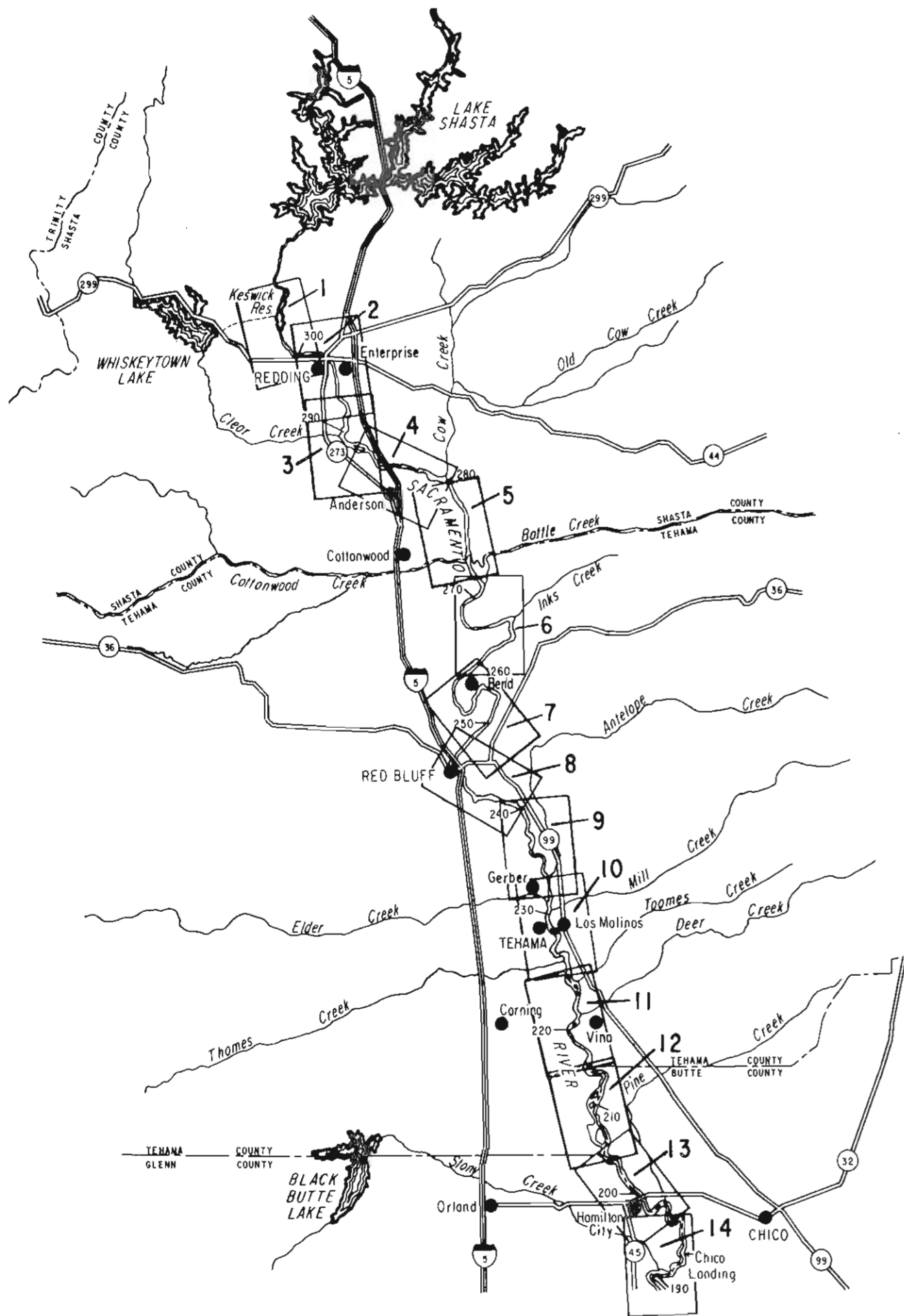
SACRAMENTO RIVER, CALIFORNIA

AERIAL ATLAS



CORPS OF ENGINEERS, SACRAMENTO, CALIFORNIA

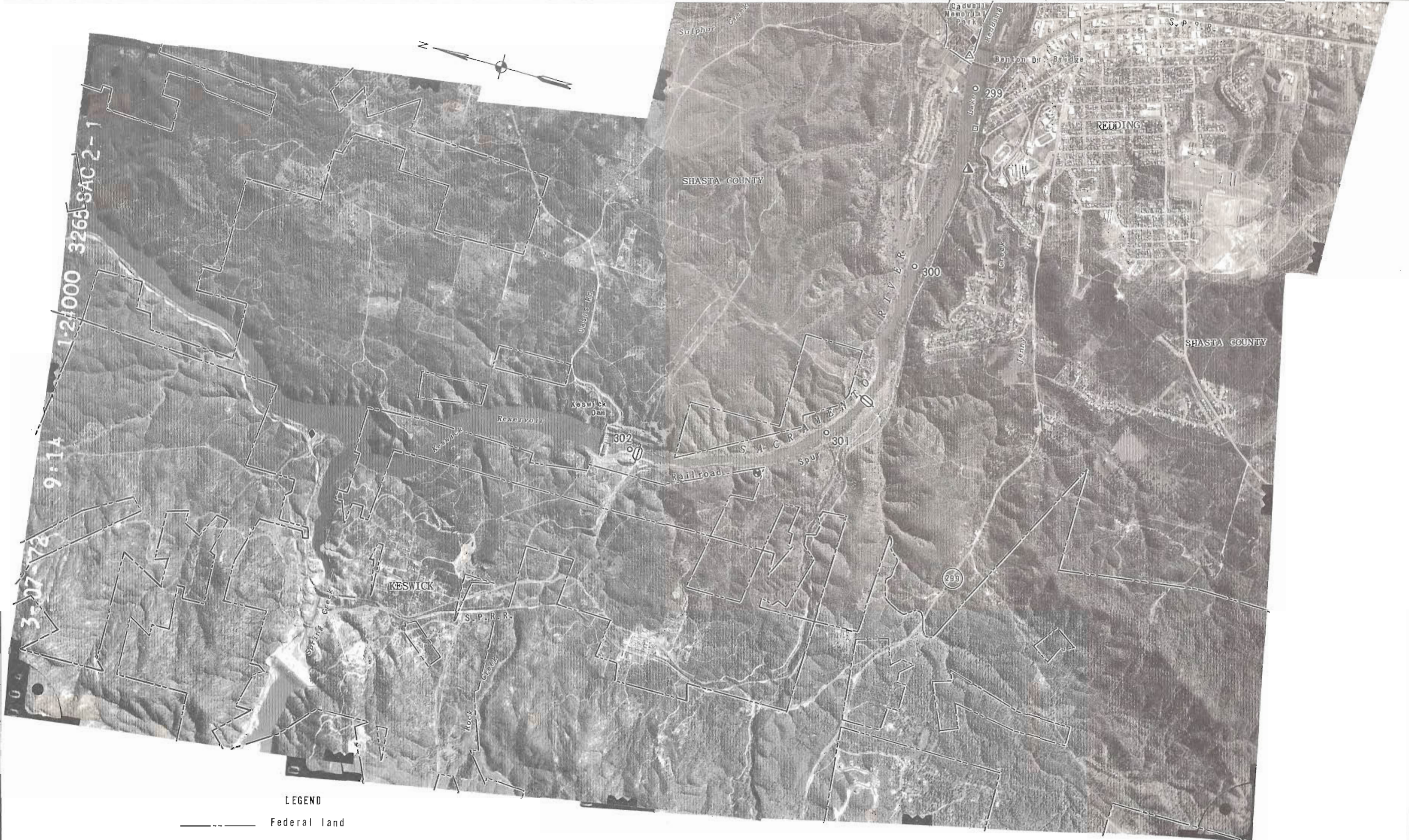
NOVEMBER 1973



NOTES:

1. Photographs taken March 1972.
2. River miles are in miles above the mouth of the Sacramento River at Collinsville.
3. River miles from Sacramento to Ord Ferry are from 1935 survey.
4. River miles from Ord Ferry to Red Bluff are from 1964 survey.
5. River miles from Red Bluff to Keswick Dam are from 1935 survey. Mile 0.0 at Red Bluff (Highway 36 Bridge) = Mile 245.3 above Collinsville.
6. Flood control structures identified below Ord Ferry are elements of the Sacramento River Flood Control Project.

SACRAMENTO RIVER, CALIFORNIA	
AERIAL ATLAS	
March 1972	
INDEX	
Scale: As Shown	
In 29 Sheets	Sheet Index
CORPS OF ENGINEERS, SACRAMENTO, CALIFORNIA	
Prepared: C.S.M.	Date: June 1973
Drawn: D.J.E.	



LEGEND

- Federal land
- State and municipal land
- Pump
- ▲ Outfall or culvert
- ◆ Boat ramp or hoist
- ⊖ Aerial Crossing
- Gaging station
- △ Historical site

SACRAMENTO RIVER, CALIFORNIA

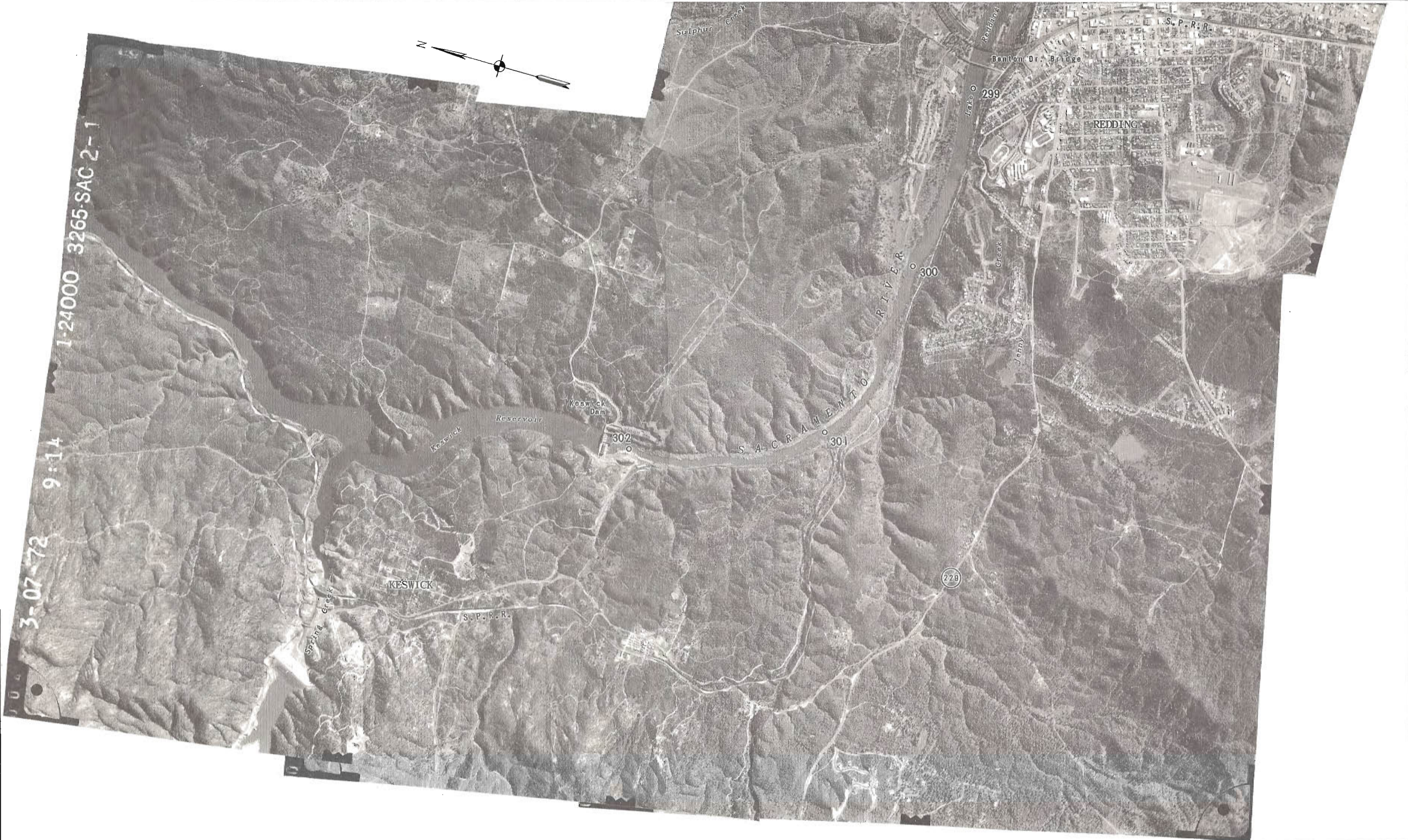
AERIAL ATLAS
 March 1972
 Mile 299 To Mile 302

Scale: 1:24,000

2,500 0 2,500

CORPS OF ENGINEERS, SACRAMENTO, CALIFORNIA

Prepared: C.S.M. Date: June 1973
 Drawn: D.J.E.



3-07-72
9:14
1-24000 3265-SAC 2-1

SACRAMENTO RIVER, CALIFORNIA

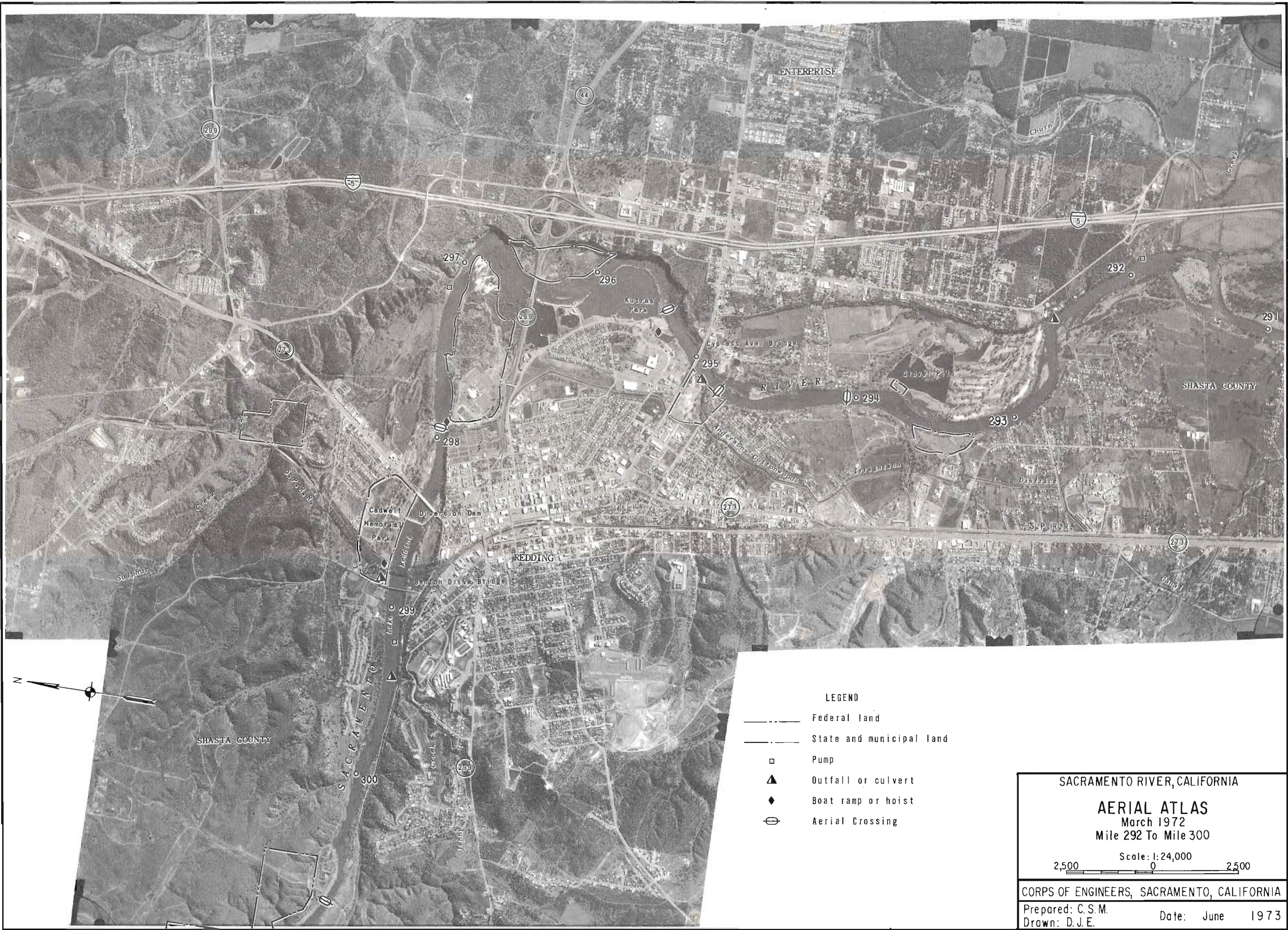
AERIAL ATLAS
March 1972
Mile 299 To Mile 302

Scale: 1:24,000
2,500 0 2,500

CORPS OF ENGINEERS, SACRAMENTO, CALIFORNIA

Prepared: C.S.M. Date: June 1973
Drawn: D.J.E.

CHART 1b



LEGEND

- Federal land
- State and municipal land
- Pump
- ▲ Outfall or culvert
- ◆ Boat ramp or hoist
- ⊖ Aerial Crossing

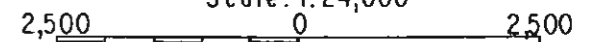
SACRAMENTO RIVER, CALIFORNIA

AERIAL ATLAS

March 1972

Mile 292 To Mile 300

Scale: 1:24,000



CORPS OF ENGINEERS, SACRAMENTO, CALIFORNIA

Prepared: C.S.M.

Date: June 1973

Drawn: D.J.E.



SACRAMENTO RIVER, CALIFORNIA

AERIAL ATLAS

March 1972

Mile 292 To Mile 300

Scale: 1:24,000

2,500 0 2,500

CORPS OF ENGINEERS, SACRAMENTO, CALIFORNIA

Prepared: C. S. M.

Date: June 1973

Drawn: D. J. E.

CHART 2b



2-11

3-07-74

LEGEND

- State and municipal land
- Pump
- ▲ Outfall or culvert
- △ Historical site



SACRAMENTO RIVER, CALIFORNIA	
AERIAL ATLAS	
March 1972	
Mile 286 To Mile 293	
Scale: 1:24,000	
2,500	0 2,500
CORPS OF ENGINEERS, SACRAMENTO, CALIFORNIA	
Prepared: C.S.M.	Date: June 1973
Drawn: D.J.E.	



SACRAMENTO RIVER, CALIFORNIA

AERIAL ATLAS
 March 1972
 Mile 286 To Mile 293

Scale: 1:24,000

2,500 0 2,500

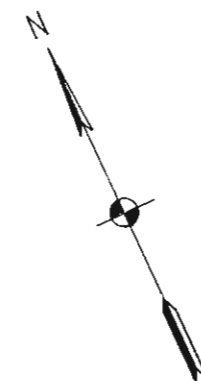
CORPS OF ENGINEERS, SACRAMENTO, CALIFORNIA

Prepared: C.S.M. Date: June 1973
 Drawn: D.J.E.

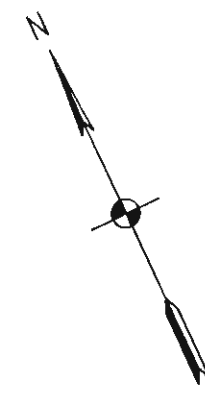


LEGEND

- State and municipal land
- ▣ Pump
- ⊖ Aerial Crossing
- △ Historical site
- ◆ Boat ramp or hoist



SACRAMENTO RIVER, CALIFORNIA	
AERIAL ATLAS March 1972 Mile 280 To Mile 288	
Scale: 1:24,000	
2,500	0 2,500
CORPS OF ENGINEERS, SACRAMENTO, CALIFORNIA	
Prepared: C.S.M.	Date: June 1973
Drawn: D.J.E.	



SACRAMENTO RIVER, CALIFORNIA

AERIAL ATLAS
 March 1972
 Mile 280 To Mile 288

Scale: 1:24,000

2,500 0 2,500

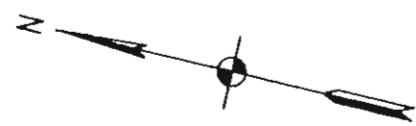
CORPS OF ENGINEERS, SACRAMENTO, CALIFORNIA

Prepared: C.S.M. Date: June 1973
 Drawn: D.J.E.



LEGEND

- Federal land
- State and municipal land
- ⊖ Aerial Crossing
- △ Historical site
- ◆ Boat ramp or hoist



SACRAMENTO RIVER, CALIFORNIA

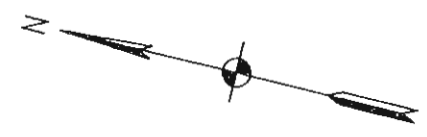
AERIAL ATLAS
 March 1972
 Mile 272 To Mile 279

Scale: 1:24,000
 2,500 0 2,500

CORPS OF ENGINEERS, SACRAMENTO, CALIFORNIA

Prepared: C. S. M.
 Drawn: D. J. E.

Date: June 1973



SACRAMENTO RIVER, CALIFORNIA

AERIAL ATLAS
 March 1972
 Mile 272 To Mile 279

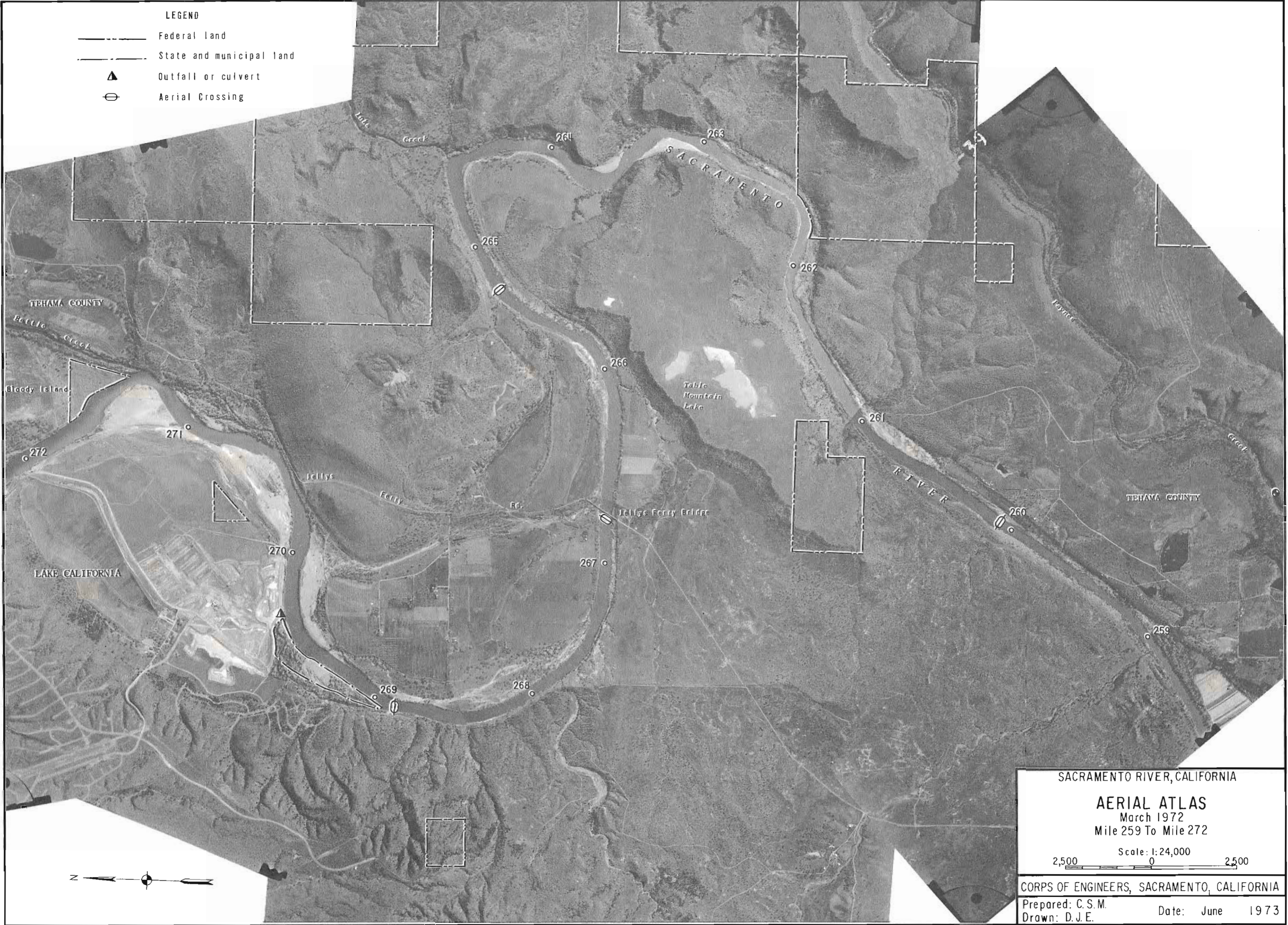
Scale: 1:24,000

2,500 0 2,500

CORPS OF ENGINEERS, SACRAMENTO, CALIFORNIA
 Prepared: C. S. M. Date: June 1973
 Drawn: D. J. E.

LEGEND

- Federal land
- State and municipal land
- ▲ Outfall or culvert
- ⊖ Aerial Crossing



SACRAMENTO RIVER, CALIFORNIA

AERIAL ATLAS
March 1972
Mile 259 To Mile 272

Scale: 1:24,000
2,500 0 2,500

CORPS OF ENGINEERS, SACRAMENTO, CALIFORNIA

Prepared: C.S.M.
Drawn: D.J.E.

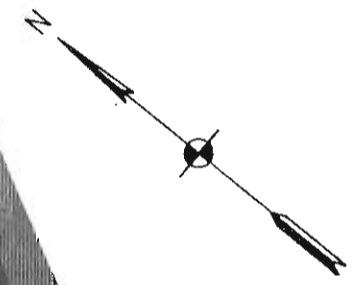
Date: June 1973



SACRAMENTO RIVER, CALIFORNIA
AERIAL ATLAS
March 1972
Mile 259 To Mile 272
Scale: 1:24,000
2,500 0 2,500
CORPS OF ENGINEERS, SACRAMENTO, CALIFORNIA
Prepared: C.S.M. Date: June 1973
Drawn: D.J.E.



- LEGEND**
- Federal land
 - State and municipal land
 - ▲ Outfall or culvert
 - ◆ Boat ramp or hoist
 - ⊖ Aerial Crossing
 - Gaging station



SACRAMENTO RIVER, CALIFORNIA

AERIAL ATLAS
 March 1972
 Mile 248 To Mile 260

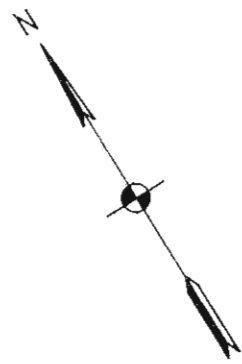
Scale: 1:24,000

2,500 0 2,500

CORPS OF ENGINEERS, SACRAMENTO, CALIFORNIA
 Prepared: C.S.M. Date: June 1973
 Drawn: D.J.E.



SACRAMENTO RIVER, CALIFORNIA
AERIAL ATLAS
March 1972
Mile 248 To Mile 260
Scale: 1:24,000
2,500 0 2,500
CORPS OF ENGINEERS, SACRAMENTO, CALIFORNIA
Prepared: C.S.M. Date: June 1973
Drawn: D.J.E.



- LEGEND**
- Federal land
 - State and municipal land
 - ▲ Outfall or culvert
 - ◆ Boat ramp or hoist
 - XXXXXXXXXXXXX Bank Protection (Chico Landing to Red Bluff Project)



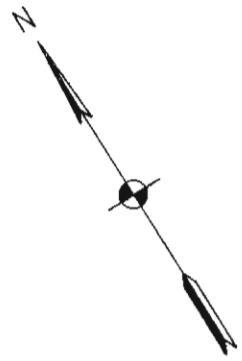
SACRAMENTO RIVER, CALIFORNIA

AERIAL ATLAS
 March 1972
 Mile 240 To Mile 248

Scale: 1:24,000

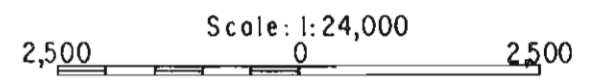
2,500 0 2,500

CORPS OF ENGINEERS, SACRAMENTO, CALIFORNIA
 Prepared: C.S.M. Date: June 1973
 Drawn: D.J.E.



SACRAMENTO RIVER, CALIFORNIA

AERIAL ATLAS
March 1972
Mile 240 To Mile 248



CORPS OF ENGINEERS, SACRAMENTO, CALIFORNIA

Prepared: C.S.M. Date: June 1973
Drawn: D.J.E.



LEGEND

- Federal land
- Pump
- ▲ Outfall or culvert
- ◆ Boat ramp or hoist
- XXXXXXXXXXXX Bank Protection (Chico Landing to Red Bluff Project)

SACRAMENTO RIVER, CALIFORNIA

AERIAL ATLAS
 March 1972
 Mile 232 To Mile 241

Scale: 1:24,000

2,500 0 2,500

CORPS OF ENGINEERS, SACRAMENTO, CALIFORNIA

Prepared: C.S.M. Date: June 1973
 Drawn: D.J.E.



SACRAMENTO RIVER, CALIFORNIA

AERIAL ATLAS
 March 1972
 Mile 232 To Mile 241

Scale: 1:24,000

2,500 0 2,500

CORPS OF ENGINEERS, SACRAMENTO, CALIFORNIA

Prepared: C.S.M. Date: June 1973
 Drawn: D.J.E.



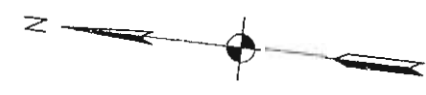
- LEGEND**
- Federal land
 - State and municipal land
 - ◆ Boat ramp or hoist
 - △ Historical site
 - xxxxxxxxxxxx Bank Protection (Chico Landing to Red Bluff Project)



SACRAMENTO RIVER, CALIFORNIA	
AERIAL ATLAS	
March 1972	
Mile 224 To Mile 232	
Scale: 1:24,000	
2,500	0 2,500
CORPS OF ENGINEERS, SACRAMENTO, CALIFORNIA	
Prepared: C. S. M.	Date: June 1973
Drawn: D. J. E.	



GERBER

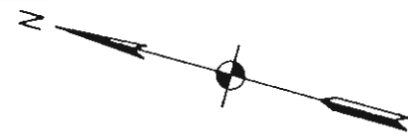


SACRAMENTO RIVER, CALIFORNIA	
AERIAL ATLAS	
March 1972	
Mile 224 To Mile 232	
Scale: 1:24,000	
2,500	0 2,500
CORPS OF ENGINEERS, SACRAMENTO, CALIFORNIA	
Prepared: C.S.M.	Date: June 1973
Drawn: D.J.E.	



LEGEND

- Federal land
- State and municipal land
- Pump
- ▲ Outfall or culvert
- ◆ Boat ramp or hoist
- Gaging station
- xxxxxxxxxxxxx Bank Protection (Chico Landing to Red Bluff Project)



SACRAMENTO RIVER, CALIFORNIA

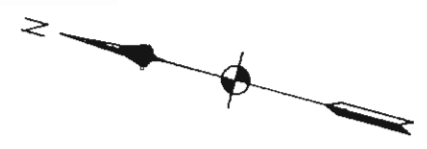
AERIAL ATLAS
 March 1972
 Mile 213 To Mile 224

Scale: 1:24,000

2,500 0 2,500

CORPS OF ENGINEERS, SACRAMENTO, CALIFORNIA

Prepared: C.S.M. Date: June 1973
 Drawn: D.J.E.



SACRAMENTO RIVER, CALIFORNIA	
AERIAL ATLAS	
March 1972	
Mile 213 To Mile 224	
Scale: 1:24,000	
2,500	0 2,500
CORPS OF ENGINEERS, SACRAMENTO, CALIFORNIA	
Prepared: C.S.M.	Date: June 1973
Drawn: D.J.E.	



LEGEND

- Federal land
- Pump
- △ Historical site

SACRAMENTO RIVER, CALIFORNIA

AERIAL ATLAS
 March 1972
 Mile 203 To Mile 215

Scale: 1:24,000
 2,500 0 2,500

CORPS OF ENGINEERS, SACRAMENTO, CALIFORNIA

Prepared: C.S.M. Date: June 1973
 Drawn: D.J.E.



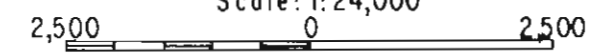
SACRAMENTO RIVER, CALIFORNIA

AERIAL ATLAS

March 1972

Mile 203 To Mile 215

Scale: 1:24,000



CORPS OF ENGINEERS, SACRAMENTO, CALIFORNIA

Prepared: C.S.M.

Date: June 1973

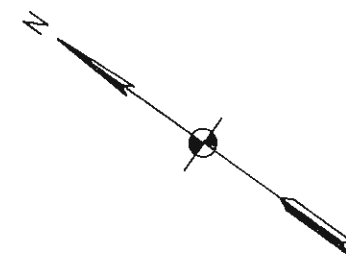
Drawn: D.J.E.

CHART 12b

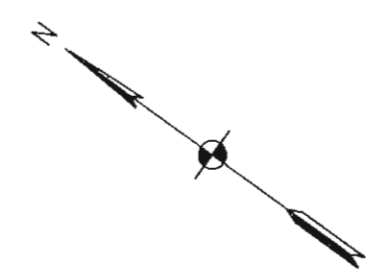


LEGEND

- Pump
- ◆ Boat ramp or hoist
- Gaging station
- △ Historical site



SACRAMENTO RIVER, CALIFORNIA	
AERIAL ATLAS	
March 1972	
Mile 196 To Mile 206	
Scale: 1:24,000	
2,500	0 2,500
CORPS OF ENGINEERS, SACRAMENTO, CALIFORNIA	
Prepared: C.S.M.	Date: June 1973
Drawn: D.J.E.	



SACRAMENTO RIVER, CALIFORNIA

AERIAL ATLAS
 March 1972
 Mile 196 To Mile 206

Scale: 1:24,000

2,500 0 2,500

CORPS OF ENGINEERS, SACRAMENTO, CALIFORNIA

Prepared: C.S.M. Date: June 1973
 Drawn: D.J.E.



LEGEND

- ▲ Outfall or culvert
- ◆ Boat ramp or hoist

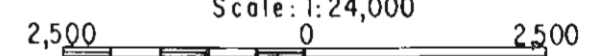
SACRAMENTO RIVER, CALIFORNIA

AERIAL ATLAS

March 1972

Mile 185 To Mile 197

Scale: 1:24,000



CORPS OF ENGINEERS, SACRAMENTO, CALIFORNIA

Prepared: C.S.M.

Date: June 1973

Drawn: D.J.E.



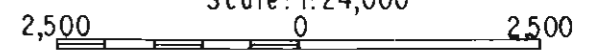
SACRAMENTO RIVER, CALIFORNIA

AERIAL ATLAS

March 1972

Mile 185 To Mile 197

Scale: 1:24,000

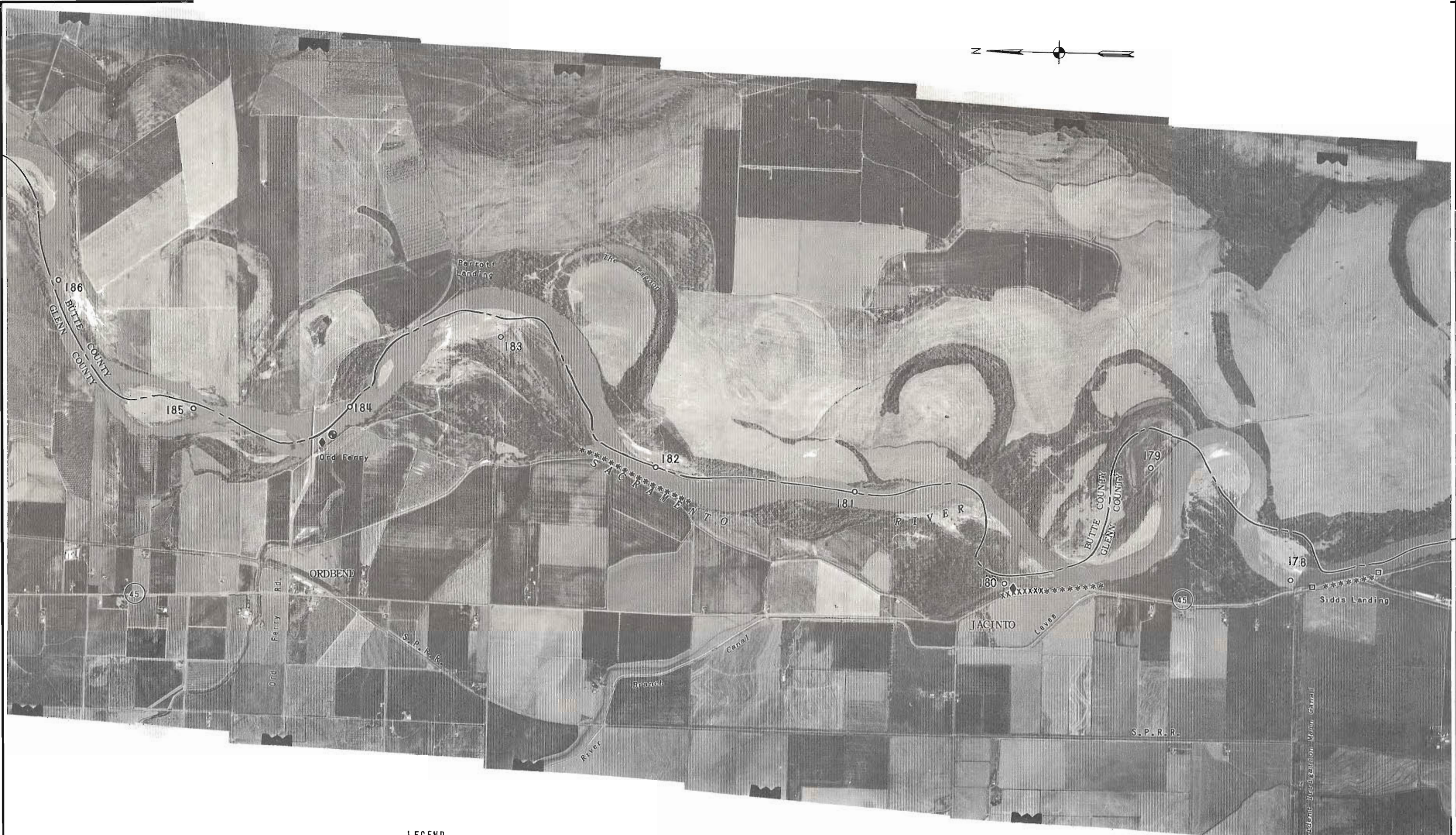


CORPS OF ENGINEERS, SACRAMENTO, CALIFORNIA

Prepared: C.S.M.

Date: June 1973

Drawn: D.J.E.



LEGEND

- Pump
- ◆ Boat ramp or hoist
- ⊕ Gaging station
- xxxxxxxxxxxxx Bank protection (Sacramento River Bank Protection project - Phase I)
- ***** Bank protection (Federal work prior to Phase I)

SACRAMENTO RIVER, CALIFORNIA

AERIAL ATLAS

March 1972

Mile 178 To Mile 186

Scale: 1:24,000

2,500 0 2,500

CORPS OF ENGINEERS, SACRAMENTO, CALIFORNIA

Prepared: C.S.M.

Date: June 1973

Drawn: D.J.E.



SACRAMENTO RIVER, CALIFORNIA

AERIAL ATLAS
 March 1972
 Mile 178 To Mile 186

Scale: 1:24,000
 2,500 0 2,500

CORPS OF ENGINEERS, SACRAMENTO, CALIFORNIA

Prepared: C.S.M. Date: June 1973
 Drawn: D.J.E.



LEGEND

- Pump
- ***** Bank protection (Federal work prior to Phase I)

SACRAMENTO RIVER, CALIFORNIA
AERIAL ATLAS
 March 1972
 Mile 169 To Mile 178
 Scale: 1:24,000
 2,500 0 2,500

CORPS OF ENGINEERS, SACRAMENTO, CALIFORNIA
 Prepared: C.S.M. Date: June 1973
 Drawn: D.J.E.



SACRAMENTO RIVER, CALIFORNIA

AERIAL ATLAS
 March 1972
 Mile 169 To Mile 178

Scale: 1:24,000

2,500 0 2,500

CORPS OF ENGINEERS, SACRAMENTO, CALIFORNIA

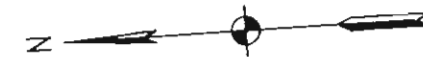
Prepared: C.S.M. Date: June 1973
 Drawn: D.J.E.



LEGEND

- . . — State and municipal land
- Pump
- Gaging station
- xxxxxxxxxxxxx Bank protection (Sacramento River Bank Protection project - Phase I)

SACRAMENTO RIVER, CALIFORNIA	
AERIAL ATLAS	
March 1972	
Mile 161 To Mile 169	
Scale: 1:24,000	
2,500	0 2,500
CORPS OF ENGINEERS, SACRAMENTO, CALIFORNIA	
Prepared: C.S.M.	Date: June 1973
Drawn: D.J.E.	



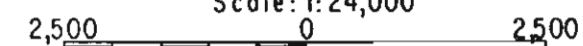
SACRAMENTO RIVER, CALIFORNIA

AERIAL ATLAS

March 1972

Mile 161 To Mile 169

Scale: 1:24,000



CORPS OF ENGINEERS, SACRAMENTO, CALIFORNIA

Prepared: C.S.M.

Date: June 1973

Drawn: D.J.E.



LEGEND

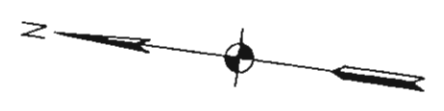
- Pump
- ⊖ Aerial Crossing
- Gaging station
- xxxxxxxxxxxxx Bank protection (Sacramento River Bank Protection project - Phase I)
- ***** Bank protection (Federal work prior to Phase I)



SACRAMENTO RIVER, CALIFORNIA	
AERIAL ATLAS	
March 1972	
Mile 150 To Mile 161	
Scale: 1:24,000	
2,500	0 2,500
CORPS OF ENGINEERS, SACRAMENTO, CALIFORNIA	
Prepared: C.S.M.	Date: June 1973
Drawn: D.J.E.	



3-07-72



SACRAMENTO RIVER, CALIFORNIA

AERIAL ATLAS
 March 1972
 Mile 150 To Mile 161

Scale: 1:24,000

2,500 0 2,500

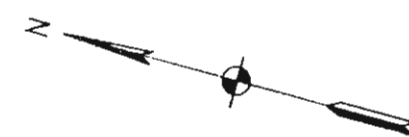
CORPS OF ENGINEERS, SACRAMENTO, CALIFORNIA

Prepared: C. S. M. Date: June 1973
 Drawn: D. J. E.



LEGEND

- State and municipal land
- Pump
- ◆ Boat ramp or hoist
- ⊖ Aerial Crossing
- Gaging station
- xxxxxxxxxxxxx Bank protection (Sacramento River Bank Protection project - Phase I)
- ***** Bank protection (Federal work prior to Phase I)



SACRAMENTO RIVER, CALIFORNIA

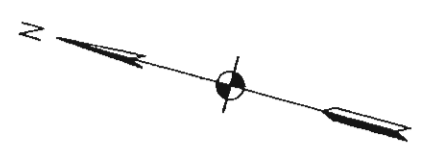
AERIAL ATLAS
March 1972
Mile 141 To Mile 152

Scale: 1:24,000

2,500 0 2,500

CORPS OF ENGINEERS, SACRAMENTO, CALIFORNIA

Prepared: C. S. M. Date: June 1973
 Drawn: D. J. E.



SACRAMENTO RIVER, CALIFORNIA

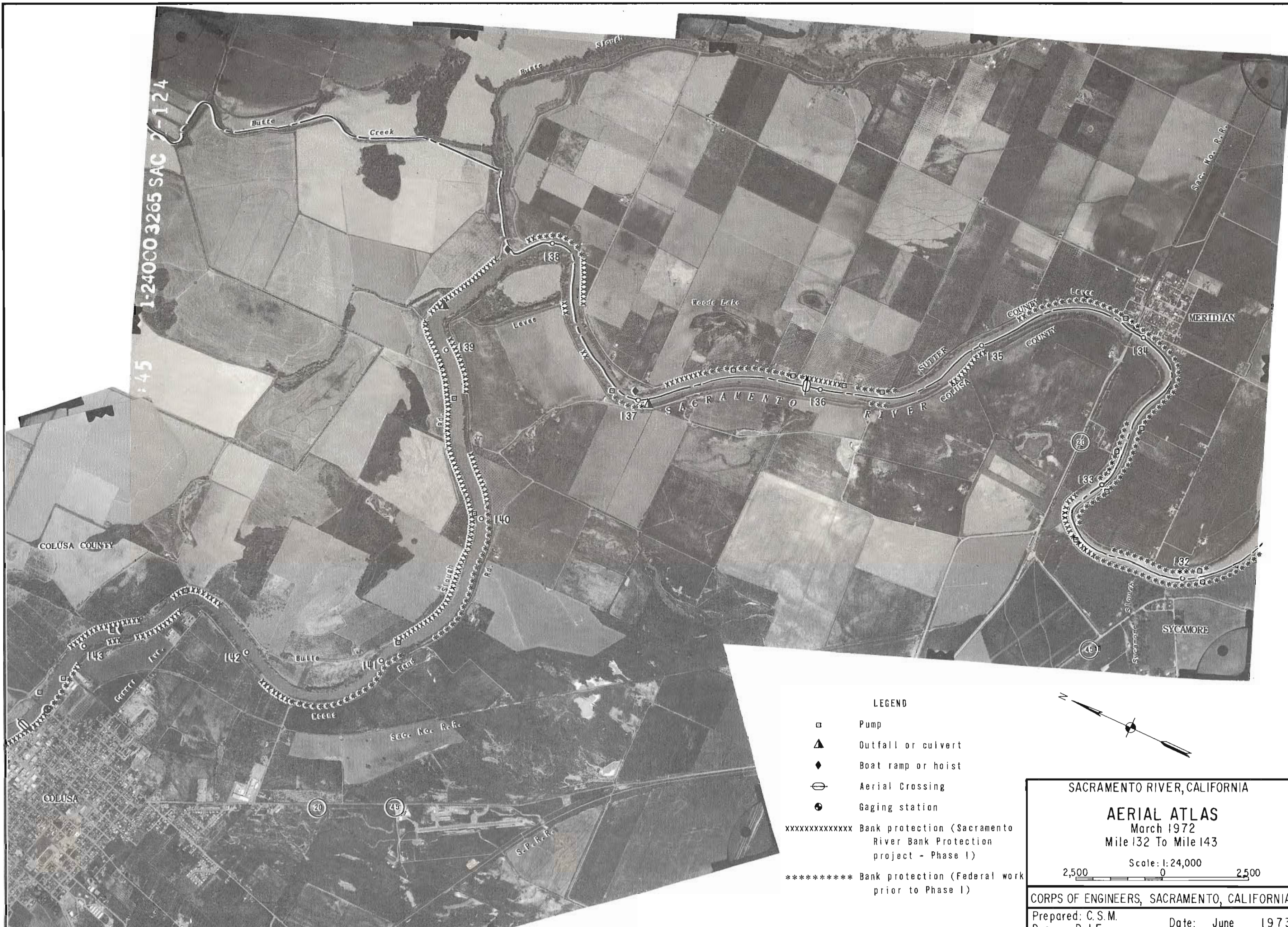
AERIAL ATLAS
 March 1972
 Mile 141 To Mile 152

Scale: 1:24,000

2,500 0 2,500

CORPS OF ENGINEERS, SACRAMENTO, CALIFORNIA

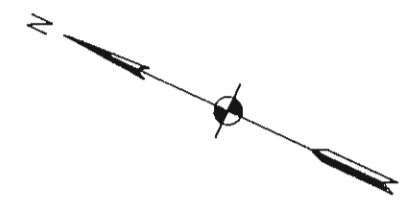
Prepared: C.S.M. Date: June 1973
 Drawn: D.J.E.



1-24000 3265 SAC 7-124
:45

LEGEND

- Pump
- ▲ Outfall or culvert
- ◆ Boat ramp or hoist
- ⊖ Aerial Crossing
- ⊙ Gaging station
- xxxxxxxxxxxxx Bank protection (Sacramento River Bank Protection project - Phase I)
- ***** Bank protection (Federal work prior to Phase I)



SACRAMENTO RIVER, CALIFORNIA

AERIAL ATLAS
March 1972
Mile 132 To Mile 143

Scale: 1:24,000

2,500 0 2,500

CORPS OF ENGINEERS, SACRAMENTO, CALIFORNIA

Prepared: C.S.M. Date: June 1973
Drawn: D.J.E.



SACRAMENTO RIVER, CALIFORNIA

AERIAL ATLAS

March 1972

Mile 132 To Mile 143

Scale: 1:24,000

2,500 0 2,500

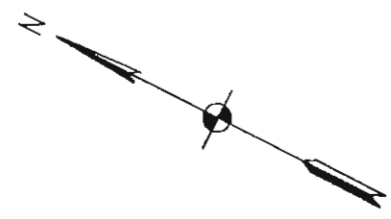
CORPS OF ENGINEERS, SACRAMENTO, CALIFORNIA

Prepared: C. S. M.

Date: June 1973

Drawn: D. J. E.

CHART 20b



LEGEND

- Pump
- ▲ Outfall or culvert
- ◆ Boat ramp or hoist
- △ Historical site
- XXXXXXXXXXXXX Bank protection (Sacramento River Bank Protection project-Phase I)
- ***** Bank protection (Federal work prior to Phase I)

SACRAMENTO RIVER, CALIFORNIA

AERIAL ATLAS
 March 1972
 Mile 123 To Mile 131

Scale: 1:24,000

2,500 0 2,500

CORPS OF ENGINEERS, SACRAMENTO, CALIFORNIA

Prepared: C.S.M. Date: June 1973
 Drawn: D.J.E.



SACRAMENTO RIVER, CALIFORNIA

AERIAL ATLAS
 March 1972
 Mile 123 To Mile 131

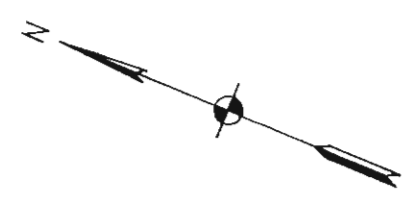
Scale: 1:24,000

2,500 0 2,500

CORPS OF ENGINEERS, SACRAMENTO, CALIFORNIA
 Prepared: C.S.M. Date: June 1973
 Drawn: D.J.E.



125



LEGEND

- Pump
- ▲ Outfall or culvert
- ◆ Boat ramp or hoist
- ⊖ Aerial Crossing
- ⊙ Gaging station
- △ Historical site
- xxxxxxxxxxxxx Bank protection (Sacramento River Bank Protection project - Phase I)
- ***** Bank protection (Federal work prior to Phase I)

SACRAMENTO RIVER, CALIFORNIA

AERIAL ATLAS
March 1972
Mile 114 To Mile 125

Scale: 1:24,000

2,500 0 2,500

CORPS OF ENGINEERS, SACRAMENTO, CALIFORNIA

Prepared: C.S.M. Date: June 1973
 Drawn: D.J.E.



125



SACRAMENTO RIVER, CALIFORNIA

AERIAL ATLAS
 March 1972
 Mile 114 To Mile 125

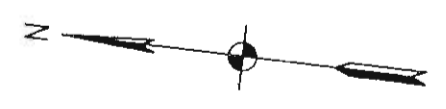
Scale: 1:24,000

2,500 0 2,500

CORPS OF ENGINEERS, SACRAMENTO, CALIFORNIA
 Prepared: C.S.M. Date: June 1973
 Drawn: D.J.E.

LEGEND

- Pump
- ⊖ Aerial Crossing
- xxxxxxxxxxxxx Bank protection (Sacramento River Bank Protection project - Phase I)
- ***** Bank protection (Federal work prior to Phase I)



SACRAMENTO RIVER, CALIFORNIA

AERIAL ATLAS
 March 1972
 Mile 103 To Mile 115

Scale: 1:24,000

2,500 0 2,500

CORPS OF ENGINEERS, SACRAMENTO, CALIFORNIA
 Prepared: C.S.M. Date: June 1973
 Drawn: D.J.E.



SACRAMENTO RIVER, CALIFORNIA

AERIAL ATLAS
 March 1972
 Mile 103 To Mile 115

Scale: 1:24,000

2,500 0 2,500

CORPS OF ENGINEERS, SACRAMENTO, CALIFORNIA

Prepared: C.S.M. Date: June 1973
 Drawn: D.J.E.



SACRAMENTO RIVER, CALIFORNIA

AERIAL ATLAS
 March 1972
 Mile 93 To Mile 106

Scale: 1:24,000

2,500 0 2,500

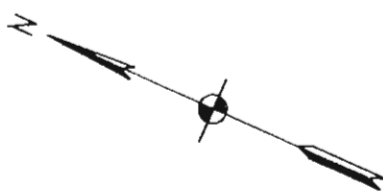
CORPS OF ENGINEERS, SACRAMENTO, CALIFORNIA
 Prepared: C.S.M. Date: June 1973
 Drawn: D.J.E.



06-72

3265 AC 1-167

SACRAMENTO RIVER, CALIFORNIA	
AERIAL ATLAS March 1972 Mile 93 To Mile 106	
Scale: 1:24,000 	
CORPS OF ENGINEERS, SACRAMENTO, CALIFORNIA	
Prepared: C. S. M.	Date: June 1973
Drawn: D. J. E.	



LEGEND

- Pump
- ▲ Outfall or culvert
- ⊖ Aerial Crossing
- Gaging station
- xxxxxxxxxxxxx Bank protection (Sacramento River Bank Protection project - Phase I)
- ***** Bank protection (Federal work prior to Phase I)

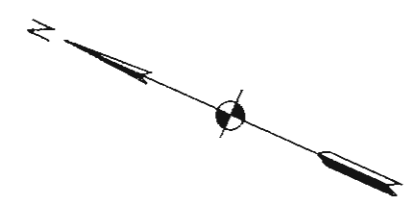
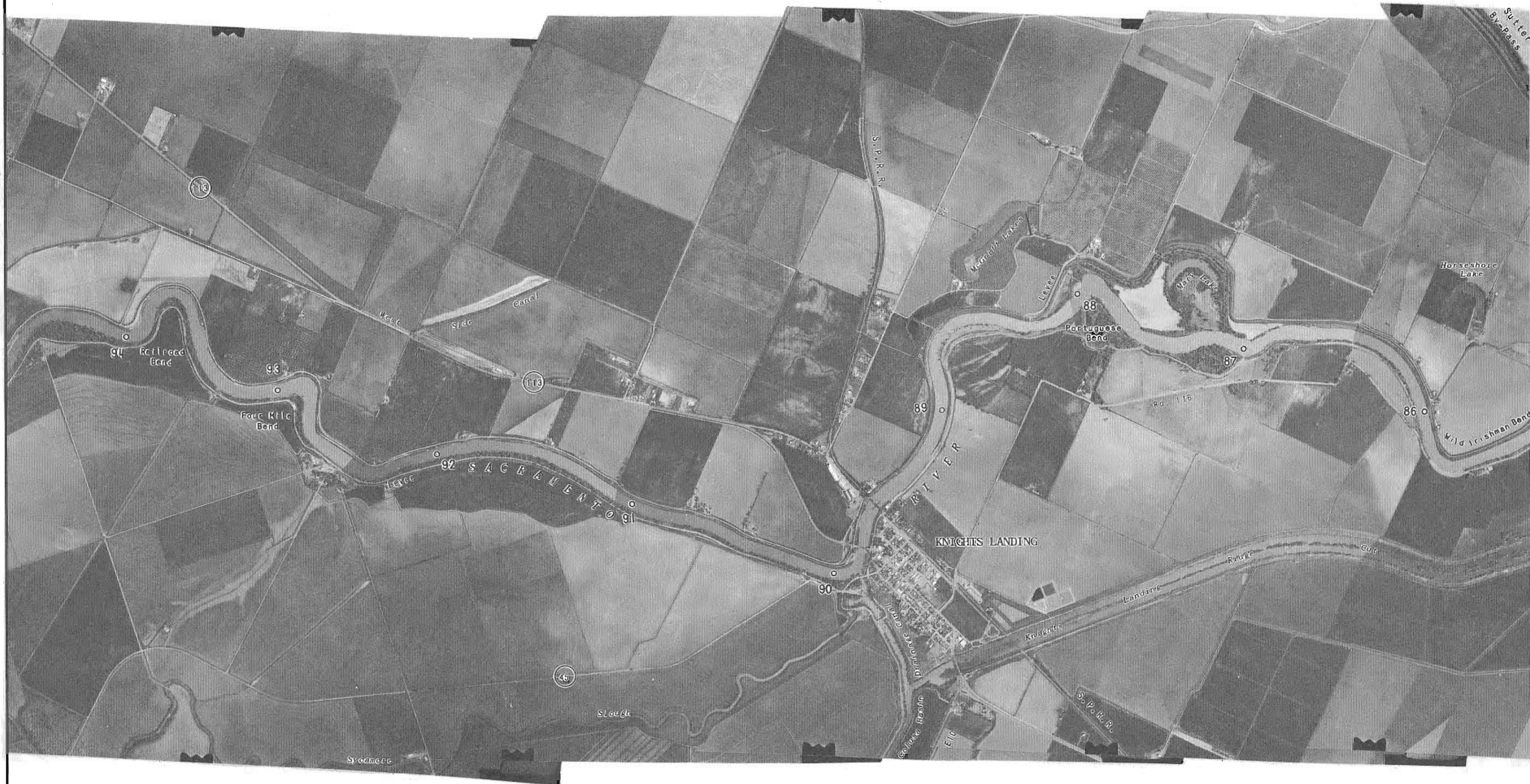
SACRAMENTO RIVER, CALIFORNIA

AERIAL ATLAS
March 1972
Mile 86 To Mile 94

Scale: 1:24,000

2,500 0 2,500

CORPS OF ENGINEERS, SACRAMENTO, CALIFORNIA
Prepared: C.S.M. Date: June 1973
Drawn: D.J.E.



SACRAMENTO RIVER, CALIFORNIA

AERIAL ATLAS
 March 1972
 Mile 86 To Mile 94

Scale: 1:24,000

2,500 0 2,500

CORPS OF ENGINEERS, SACRAMENTO, CALIFORNIA

Prepared: C. S. M. Date: June 1973
 Drawn: D. J. E.



- LEGEND**
- ◻ Pump
 - ▲ Outfall or culvert
 - ◆ Boat ramp or hoist
 - ⊖ Aerial Crossing
 - ⊙ Gaging station
 - xxxxxxxxxxxxx Bank protection (Sacramento River Bank Protection project - Phase I)
 - ***** Bank protection (Federal work prior to Phase I)



SACRAMENTO RIVER, CALIFORNIA

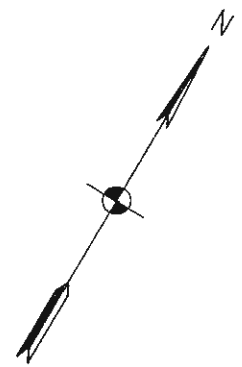
AERIAL ATLAS
 March 1972
 Mile 76 To Mile 86

Scale: 1:24,000

2,500 0 2,500

CORPS OF ENGINEERS, SACRAMENTO, CALIFORNIA

Prepared: C.S.M. Date: June 1973
 Drawn: D.J.E.



SACRAMENTO RIVER, CALIFORNIA

AERIAL ATLAS
March 1972
Mile 76 To Mile 86

Scale: 1:24,000

2,500 0 2,500

CORPS OF ENGINEERS, SACRAMENTO, CALIFORNIA
Prepared: C. S. M. Date: June 1973
Drawn: D. J. E.



LEGEND

- ◻ Pump
- ▲ Outfall or culvert
- ◆ Boat ramp or hoist
- xxxxxxxxxxxxx Bank protection (Sacramento River Bank Protection project - Phase I)
- ***** Bank protection (Federal work prior to Phase I)

SACRAMENTO RIVER, CALIFORNIA

AERIAL ATLAS
 March 1972
 Mile 67 To Mile 76

Scale: 1:24,000

2,500 0 2,500

CORPS OF ENGINEERS, SACRAMENTO, CALIFORNIA

Prepared: C.S.M. Date: June 1973
 Drawn: D.J.E.



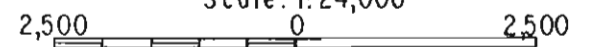
SACRAMENTO RIVER, CALIFORNIA

AERIAL ATLAS

March 1972

Mile 67 To Mile 76

Scale: 1:24,000



CORPS OF ENGINEERS, SACRAMENTO, CALIFORNIA

Prepared: C.S.M.

Date: June 1973

Drawn: D.J.E.

CHART 27b



SACRAMENTO RIVER, CALIFORNIA

AERIAL ATLAS
 March 1972
 Mile 62 To Mile 68

Scale: 1:24,000

2,500 0 2,500

CORPS OF ENGINEERS, SACRAMENTO, CALIFORNIA

Prepared: C.S.M. Date: June 1973
 Drawn: D.J.E.



- LEGEND**
- Pump
 - ⊖ Aerial Crossing
 - ⊙ Gaging station
 - △ Historical site
 - xxxxxxxxxxxxx Bank protection (Sacramento River Bank Protection project - Phase I)



SACRAMENTO RIVER, CALIFORNIA

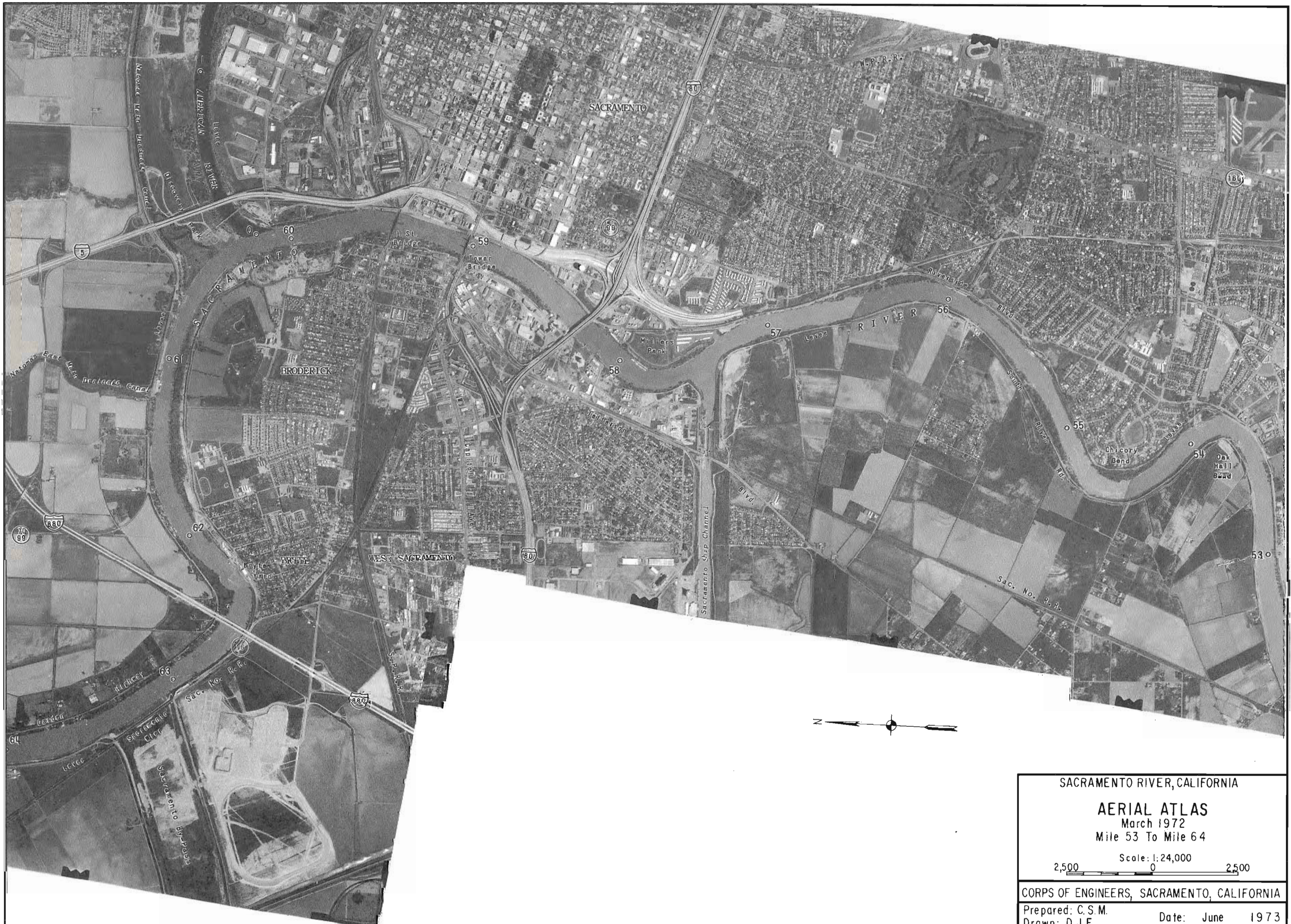
AERIAL ATLAS
 March 1972
 Mile 53 To Mile 64

Scale: 1:24,000

2,500 0 2,500

CORPS OF ENGINEERS, SACRAMENTO, CALIFORNIA

Prepared: C.S.M. Date: June 1973
 Drawn: D.J.E.



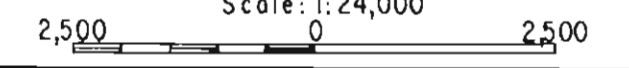
SACRAMENTO RIVER, CALIFORNIA

AERIAL ATLAS

March 1972

Mile 53 To Mile 64

Scale: 1:24,000



CORPS OF ENGINEERS, SACRAMENTO, CALIFORNIA

Prepared: C.S.M.

Date: June 1973

Drawn: D.J.E.

GPO 791-805

CHART 29b