

CDFW Terrestrial- Sites 60 day Evaluation Initial Meeting Agenda



Sites Reservoir Project

HDR Office: 2379 Gateway Oaks Drive, Suite 200 Fleming
Conference Room.

Call in: 866-583-7984,,1977661

Date: June 18, 2019

Location:

Time: 9:00 am – 11:00 am

Purpose: Initiate discussions of the Sites Project terrestrial components for the 60-day evaluation process. Review existing information, discuss permitting approach, establish technical meeting schedule

Invitees:

Jim Watson, Sites Authority
Rob Thomson, Sites Authority
Ali Forsythe, Sites Authority
Ian Boyd, CDFW

Monique Briard, ICF
Ellen Berryman, ICF
John Howe, ICF

Jelica Arsenijevic, HDR
John Spranza, HDR

Action Item	Owner	Deadline	Notes
1			
2			
3			
4			
5			
6			
7			
8			

Agenda:

Discussion Topic	Topic Leader	Est Time
1. Sites Introductions, Overview and Purpose <ul style="list-style-type: none"> a. Introductions b. Project overview and understanding <ul style="list-style-type: none"> i. Location/Facilities ii. Project Purposes 	Jim Watson and Ali Forsythe	60 min
2. Permitting Approach <ul style="list-style-type: none"> a. Consultation b. Analysis 	Ali Forsythe and John Howe	45 min

3. Next steps for 60 day schedule

Group discussion

15 min

Meeting Notes

CDFW - SITES 60 DAY EVALUATION INITIAL MEETING

June 18, 2019

Agenda

- Introductions and Purpose
- Project overview and understanding
 - Location/Facilities
 - Project Purposes
 - Key Topics
- Permitting Approach
- Next Steps



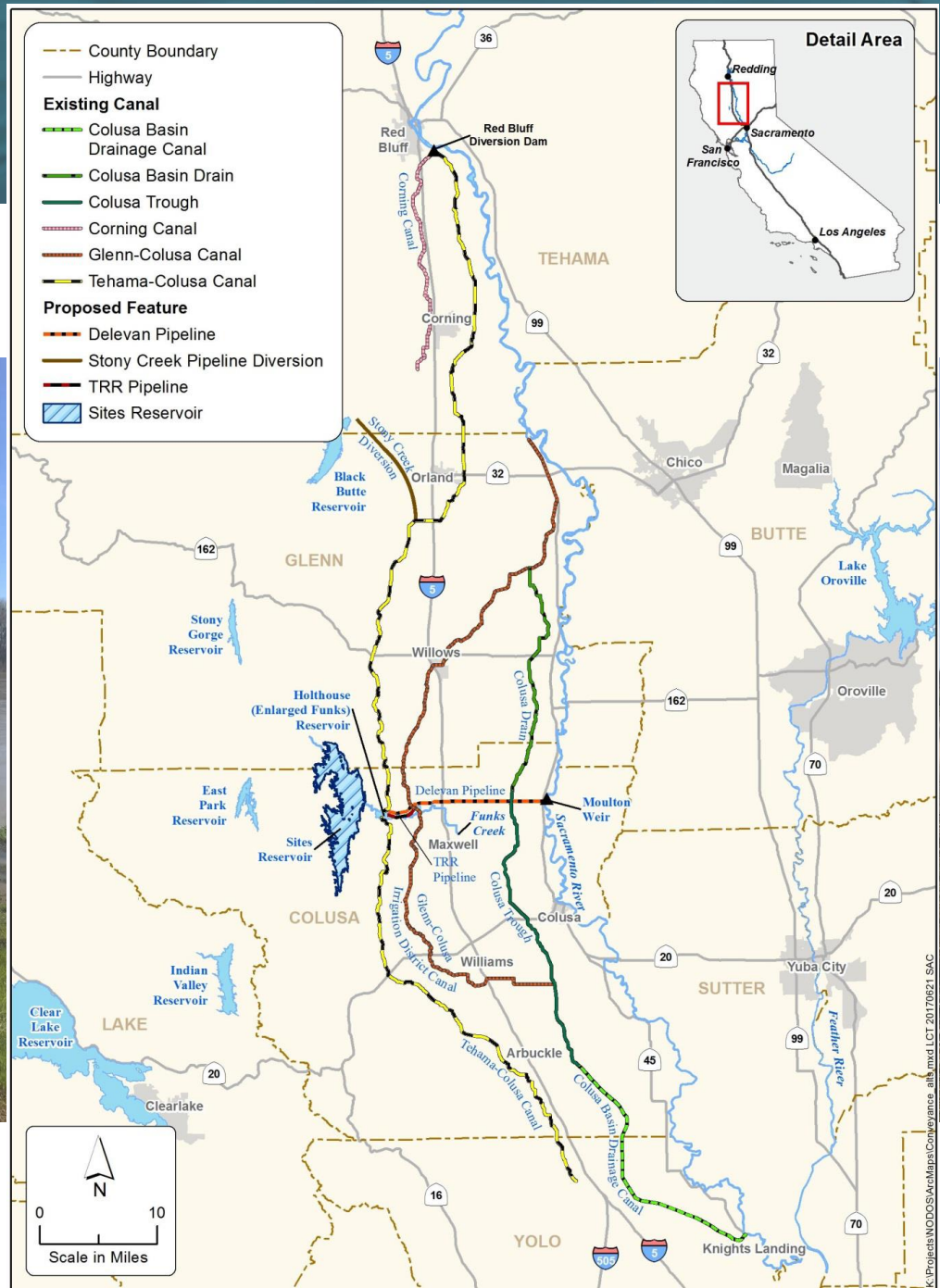
Purpose of the 60-day

Guide the Authority to increase the clarity of the Project Description and supporting analyses for an affordable project capable of providing meaningful water supply and dedicated ecosystem benefits looking toward

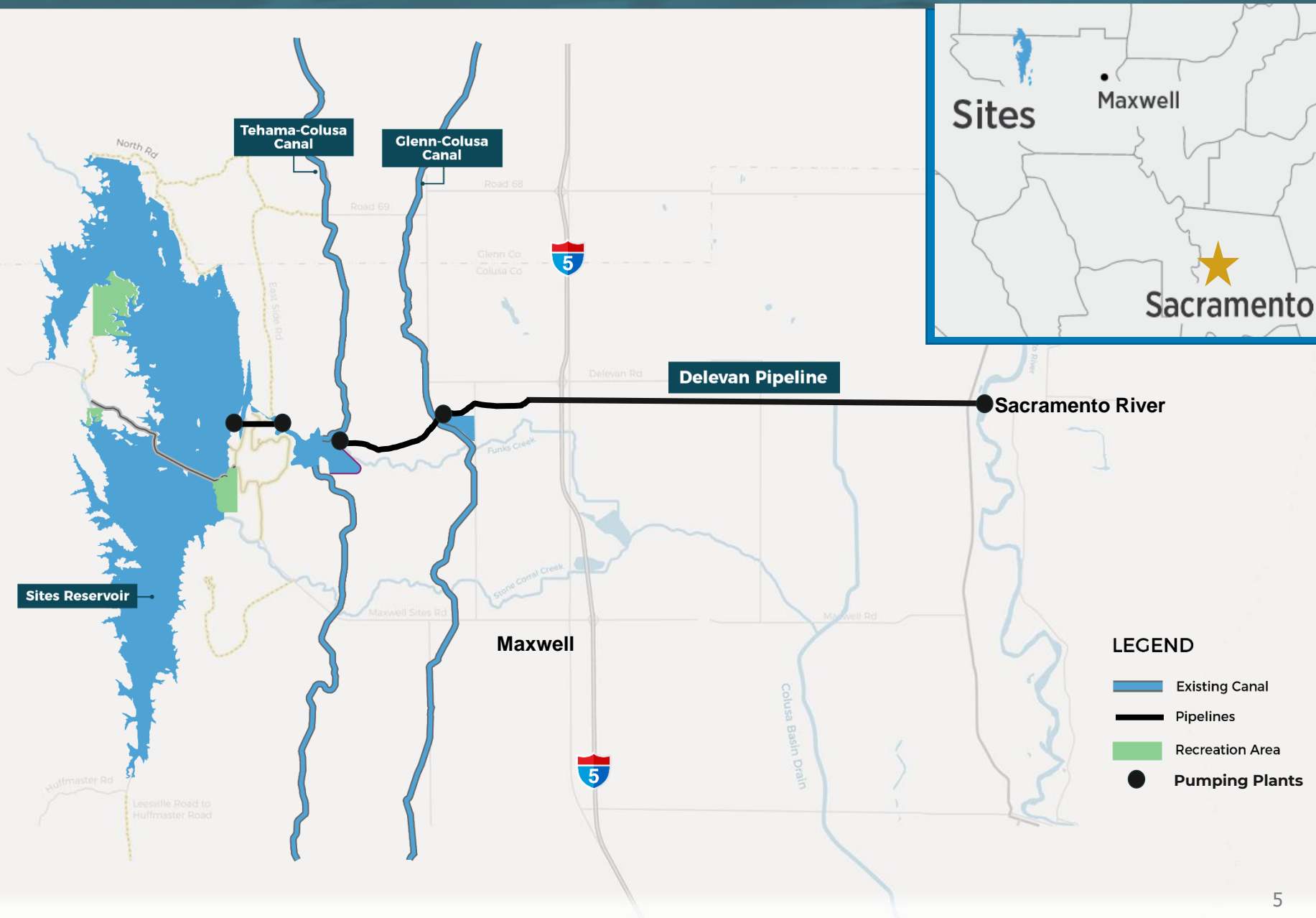
- Final EIR/EIS
- Permit applications



Regional Map



Project Facilities



Key Topics/Anticipated Issues

- Approach to address CEQA comments
 1. Mitigation
 2. Surveys
- Approach for Permits (2081 ITP and 1600) Construction and Operations
- Species to be covered in the 2081 ITP
- Fully protected species
- Birds – nesting, resident, and migratory
- Approach for special status plants and surveys



Proposed Permitting Approach

- 2081 Incidental Take Permit
 - Construction and Operations
 - Define Impact Area
 - Proposed terrestrial species
 - Federal and state listed species
 - Impact analysis approach
 - Fully mitigate
- Lake or Streambed Alteration Agreement
 - Standard permit or long-term
 - Jurisdictional area
 - Reports needed for the agreement



Approach to 2081 ITP

- Desktop modeling approach for species
- Assuming presence
- Fully mitigate
- Plant surveys prior to construction



State Listed Terrestrial Species

Species	Federal Status	State Status
Foothill yellow-legged frog	No listing	Candidate, Threatened
Giant garter snake	Threatened	Threatened
Swainson's hawk	No listing	Threatened
Bank swallow	No listing	Threatened
Western yellow-billed cuckoo	Threatened	Endangered
Tricolored blackbird	No listing	Threatened
Palmate-bracted bird's beak	Endangered	Endangered

Terrestrial Species Models

Foothill yellow-legged frog	Perennial and intermittent streams with rocky substrates (not Sacramento River), Stone Corral Creek, Funks Creek (above reservoir), Antelope Creek
Giant garter snake	(Valley floor) AQUATIC - agricultural ditches, canals, freshwater emergent wetland, managed wetland, rice . UPLAND - areas within 200 feet of aquatic habitat that include annual grassland, other ag, disturbed, barren.
Western yellow-billed cuckoo	Dettling et al.; (2015) Sacramento River, areas 100m wide and patches of at least 37 acres.
Swainson's hawk	NESTING - Riparian, other tree stands, isolated trees (not blue oak woodland); FORAGING - Minimum of 5-acre patches. Annual grassland, seasonal wetlands, alfalfa, hay fields, field crops, row crops, managed wetlands

Terrestrial Species Models cont.

Tricolored blackbird	NESTING - emergent marsh, managed wetland, riparian (blackberry thickets) FORAGING - annual grassland, seasonal wetland, grain/hay crops, field crops, rice, fallow
Bank swallow	Sacramento River banks provide potential habitat
Palmate-bracted bird's beak	Model will assume some portion of grasslands contain saline-alkali seasonal wetlands.



Mapping Approach

ICF is mapping land cover through aerial photo interpretation using

- Google Earth
- National Agricultural Imagery Program (NAIP) imagery
- Other data available for the project



Schedule (Proposed)

June 25: Topic B: Proposed terrestrial species (GGS, WYBC, FYLF, Swainson's hawk, tricolored blackbird, bank swallow) to be covered in 2081 ITP and jointly covered species for BA (GGS and WYBC), discuss proposed analysis approach, minimization measures and mitigation

July 2: Continue discussion of Topic B

July 9: Topic C: Fully protected species avoidance measures during construction and flooding of the reservoir (American peregrine falcon, golden eagle, bald eagle, white-tailed kite, greater sandhill crane, and ringtail)

July 16: (skip)

July 23: Topic D: Birds – measures to protect nesting, resident, and migratory birds; construction of transmission lines to meet APLIC guidelines

July 30: Topic E: Plants – Special status plant surveys, proposed analysis, and conservation measures



