

Water Rights Small Group

Overview and Discussion of the Sites Project's
Water Right Approach

February 23, 2021



Agenda

1. Introductions
2. Group Norms
3. Water Right Approach and Key Application Parameters
4. Prop 1 Water
5. Water Right Schedule
6. Additional Topics from the Group
7. Action Items and Next Steps

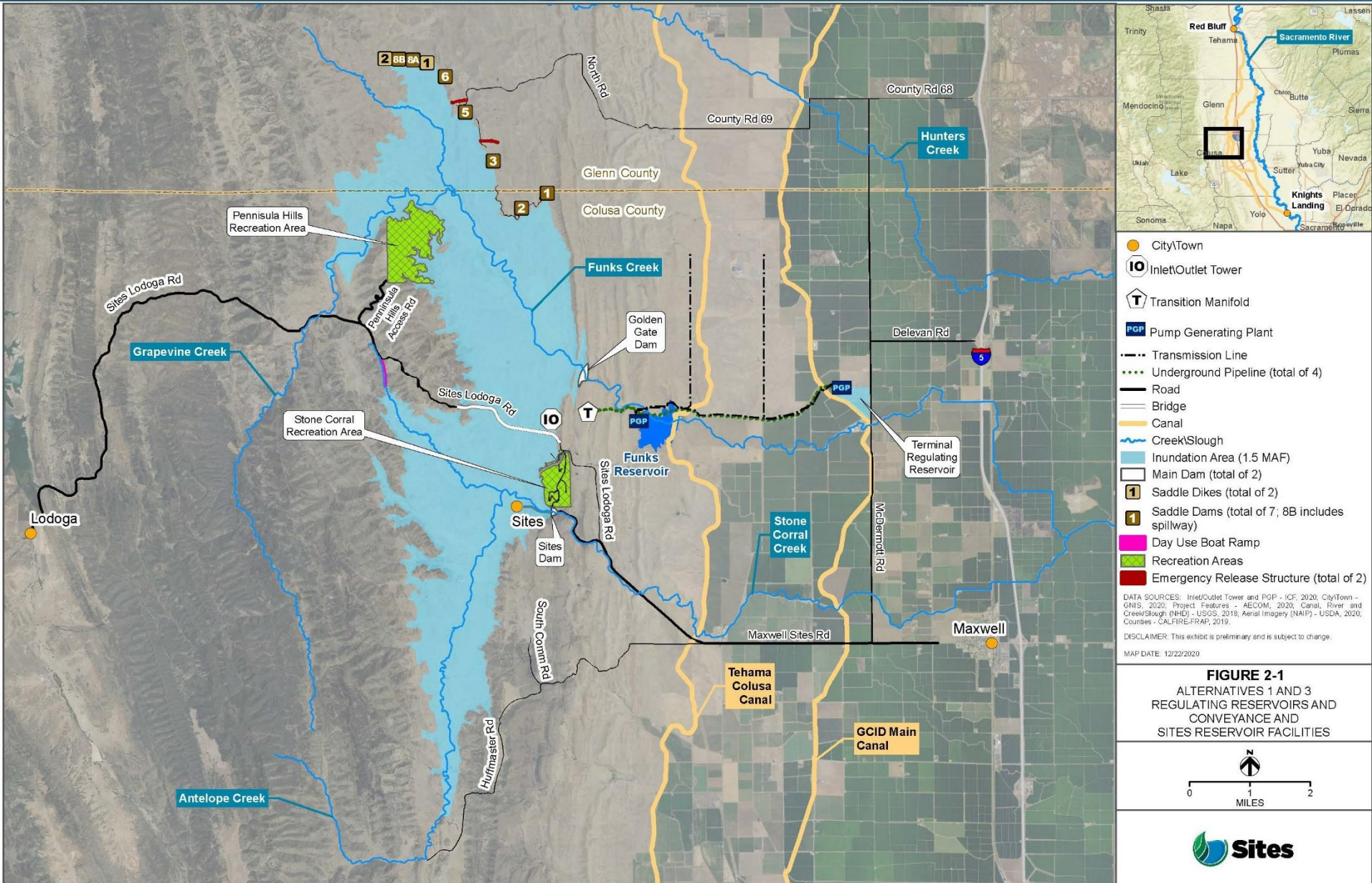
Group Norms

- Encourage everyone to be on video
- Mute yourself when others are speaking
- Respectful, professional dialogue
- Ask questions throughout, lets have a dialogue
 - Let the speaker finish their point
 - Use the raise your hand function in Teams if needed

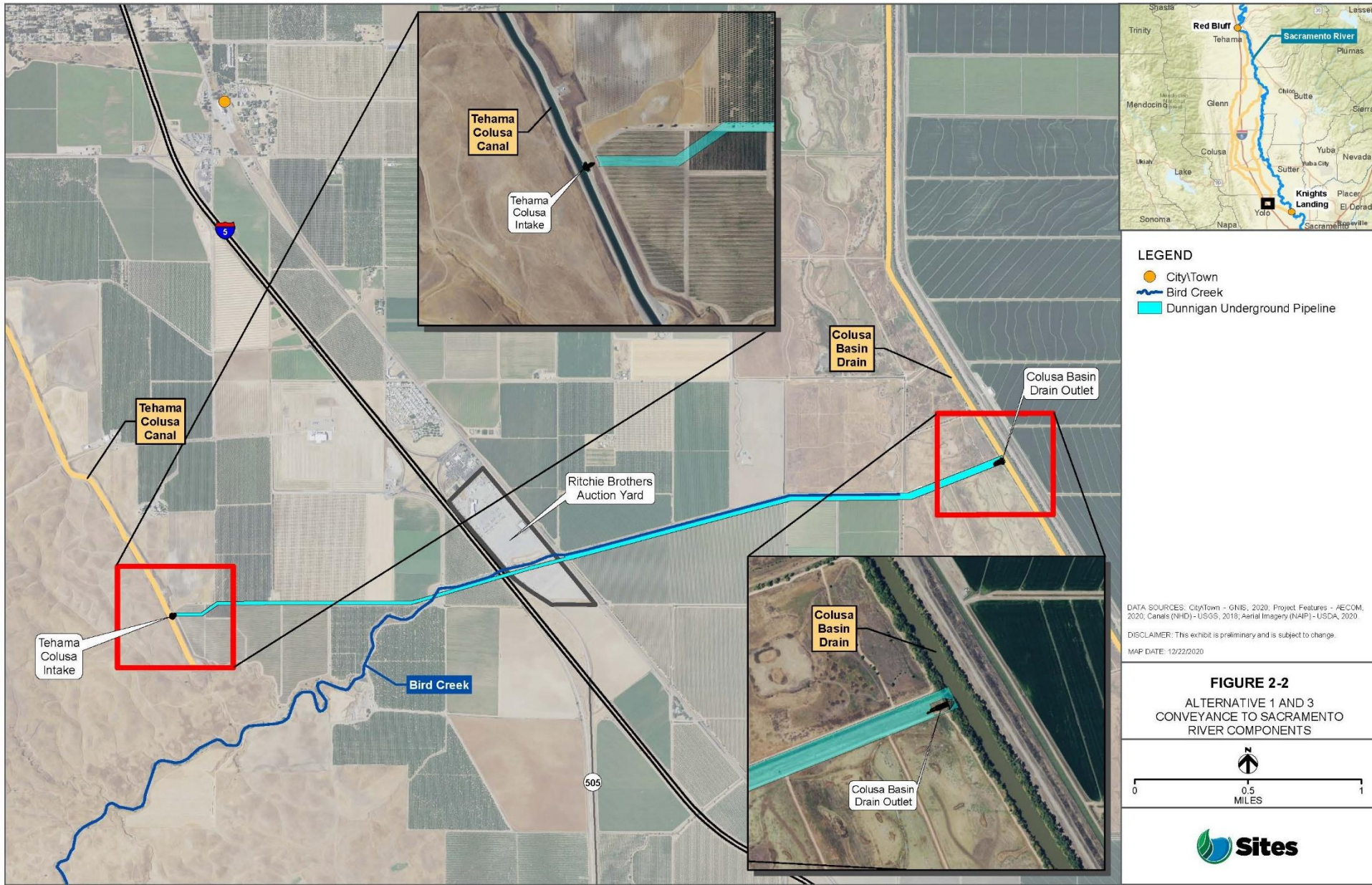
Alt 1 – Authority’s Preferred Project

Facilities / Operations	Alternative 1
Reservoir Size	1.5 MAF
Diversion(s)	Diversion from Sacramento River into existing TC Canal at Red Bluff and the existing GCID Main Canal at Hamilton City
Conveyance Release / Dunnigan Release	Release 1,000 cfs into new pipeline to the Colusa Basin Drain
Releases into Funks and Stone Corral Creeks	Specific flow criteria to maintain flows to protect downstream water right holders and ecological function
Reclamation Involvement	<ul style="list-style-type: none"> • Funding Partner up to 7% Cost-Share • Operational exchanges
DWR Involvement	Operational Exchanges with Oroville and use of SWP facilities South-of-Delta
Hydropower	Incidental power generation up to 40 megawatts each at Funks PGP and TRR PGP

Alt 1 – Preferred Project



Alt 1 – Preferred Project



LEGEND

- City/Town
- Bird Creek
- Dunnigan Underground Pipeline

DATA SOURCES: City/Town - GNS, 2020; Project Features - AECOM, 2020; Canals (NHD) - USGS, 2018; Aerial Imagery (NAIP) - USDA, 2020.

DISCLAIMER: This exhibit is preliminary and is subject to change.

MAP DATE: 12/22/2020

FIGURE 2-2
ALTERNATIVE 1 AND 3
CONVEYANCE TO SACRAMENTO
RIVER COMPONENTS

Application Key Approaches

- Reinitiated efforts on water right application
- Developing key parameters for application
 - Informs and sets the foundation of our water right permit approach
 - Ensures these components are covered in the Revised EIR/Supplemental EIS

Purpose of Use

- How water diverted into Sites Reservoir would subsequently be used
- Generally follow the purposes of use in the SWP and CVP water right permits
- Purpose of Use:
 - Irrigation
 - Domestic
 - Municipal
 - Industrial
 - Water Quality
 - Recreational
 - Fish and Wildlife Preservation and Enhancement
 - Incidental Power Generation
- Working with State Board staff on how to address groundwater replenishment, contributing to the goals of SGMA

Source

- Sources:
 - Sacramento River
 - Stone Corral Creek
 - Funks Creek

Diversion to Off-stream Storage

- How much the project seeks to divert and store over what time period
- Request would be consistent with the available canal capacity and facilities to move water into Sites
- Season limited to the season when the Sacramento River is not fully appropriated
- Storage of up to 1.5 million acre-feet per year from all sources

Points of Diversion

- Locations where the project would divert water (or take “control” of water)
- Points of diversion:
 - Tehama-Colusa Canal (existing, screened facility)
 - Glenn-Colusa Irrigation District’s Main Canal (existing, screened facility)
 - Sites Dam
 - Golden Gate Dam

Releases from Sites for Storage Partners

- Storage Partners –
 - Those that have funded and received a Storage Allocation in Sites Reservoir and the resulting water supply or water supply related environmental benefits
 - Includes local agencies, the State of California, and the Federal Government
- Partners along the TC Canal and GCID Main Canal
- Partners along the Sacramento River
- Partners along the Colusa Basin Drain, Yolo Bypass, and North Bay Aqueduct
- Partners South-of-Delta

Points of Rediversion

- Waterways where water previously diverted for the project could be re-diverted
- Points of re-diversion:
 - North Bay Aqueduct
 - Contra Costa's facilities
 - Reclamation's Rock Slough Intake
 - SWP Delta and South-of-Delta facilities
 - CVP Delta and South-of-Delta facilities

Place of Use

- Area where water diverted to storage could subsequently be used
- Place of Use:
 - Sites Reservoir, associated facilities and recreation areas
 - CVP and SWP place of use upstream of the Delta where water from Sites Reservoir can physically be delivered
 - All areas of Colusa County where water from Sites Reservoir can physically be delivered
 - Entire CVP and SWP area of export
- Place of use includes Yolo Bypass

Prop 1 Water Considerations

- Cover Prop 1 Water Use in Place of Use and Points of Rediversion
 - Yolo Bypass Water
 - Yolo Bypass in Place of Use
 - Delta to Chipps Island in Place of Use
 - Refuge Water Supply
 - May need additional points of rediversion south-of-Delta (Mendota Dam and Sack Dam on San Joaquin River)
- 1707 not possible in a new application
- Working with State Board staff on best approach to protect Prop 1 water

Water Right Schedule

- Late Summer – Revised Draft EIR/Supplemental Draft EIS
- December 2021 – Submit Application
- Early 2022 – State Board Notice
- Spring 2022 – Final EIR/EIS
- Spring/Summer 2022 – Formal Protest Resolution Period
- Winter 2022/Early 2023 – Hearing (if needed)
- Spring 2023 – State Board issues Order and water right

Additional Topics from the Group

- Any additional questions or thoughts?

Action Items and Next Steps

Thank you!

