

Maxwell Intertie Project

Status of the Project and
Relationship with Sites Reservoir Project

August 4, 2022



Meeting Agenda

- Introductions
- Maxwell Intertie Project
 - Status of Environmental Compliance
- Sites Reservoir Project
 - Project Description
 - Relationship to Intertie
 - Status of Environmental Compliance
- Next Steps

Maxwell Intertie Project

- Authority applied for a USDA Rural Development Community Facilities direct loan to assist in the financing of the construction of the Maxwell Water Intertie (MWI) facilities.
- MWI facilities would connect the existing Tehama Colusa Canal (TC Canal) and the existing Glenn Colusa Irrigation District's (GCID) Main Canal
 - Increase water management flexibility and improve water supply resiliency for participants during dry years
 - Increase the efficiency and reliability of water management in the western Sacramento Valley

Maxwell Intertie Project Facilities

- Proposed facilities as described in 2018 include:
 - 1,200-acre-foot capacity Terminal Regulating Reservoir (TRR) covering 130 acres with a spillway to the local irrigation ditch system and bottom drain, both of which ultimately connect to Funks Creek
 - TRR Pumping Plant with a 900-cfs pumping capacity, a 1-acre electrical switchyard adjacent to the plant, and a 3.5-mile power line
 - GCID Main Canal Connection to TRR including a gated inlet control structure, short inlet channel, and concrete canal lining in the GCID Main Canal immediately upstream and downstream of the TRR connection
 - 3.5-mile MWI pipeline sized for 900 cfs pumped capacity and 900 cfs gravity flow capacity, private access bridge over the GCID Main Canal for construction access and maintenance of the pipelines, and a 2.7-mile gravel access road that would run most of the length of the MWI pipeline alignment

Status of Environmental Compliance

- NEPA Environmental Assessment (EA)
 - USDA issued Draft EA in August 2018
 - Final EA September 2018
 - FONSI dated September 24, 2018
- ESA Section 7
 - Consultation August-September 2018
 - Expedited Biological Opinion issued in 2018
- Section 106
 - Nationwide Programmatic Agreement (NPA)
 - USDA 8/17/2018 notice to SHPO
 - Intent to use the USDA RD NPA
 - “Once we have determined the final Area of Potential Effect (APE) RHS and the Authority will initiate a section 106 review and provide you with a complete project description and a description of the APE”
 - NPA Applicant Awareness Certification signed by the Authority

EA Mitigation

Land Use
Geology and Paleontological Resources
Air Quality and Climate Variability
Water Resources
Biological Resources

- Wildlife and Special-Status Species
- Vegetation and Special-Status Species
- Wetlands

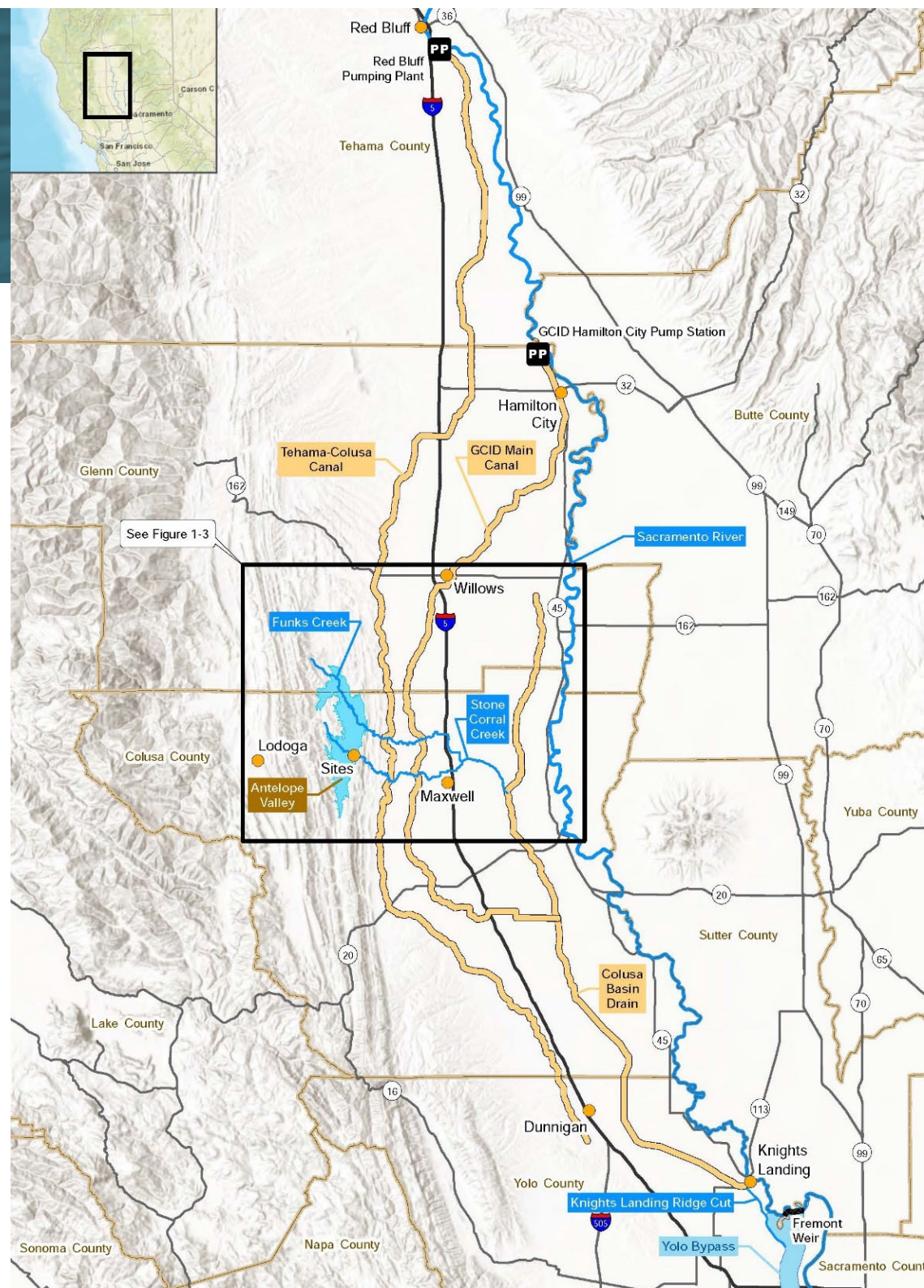
Aesthetics and Visual Resources

Maxwell Intertie Funding Commitments

- USDA's action consisted of the conditional approval of the Community Facilities direct loan
 - Not a final project approval
 - Requires all conditions outlined by USDA to be fulfilled before the closure of the loan and the loan funds are dispersed
- Requires completion of:
 - Additional technical analyses
 - Additional details on financing and participation
 - All environmental reviews and permits

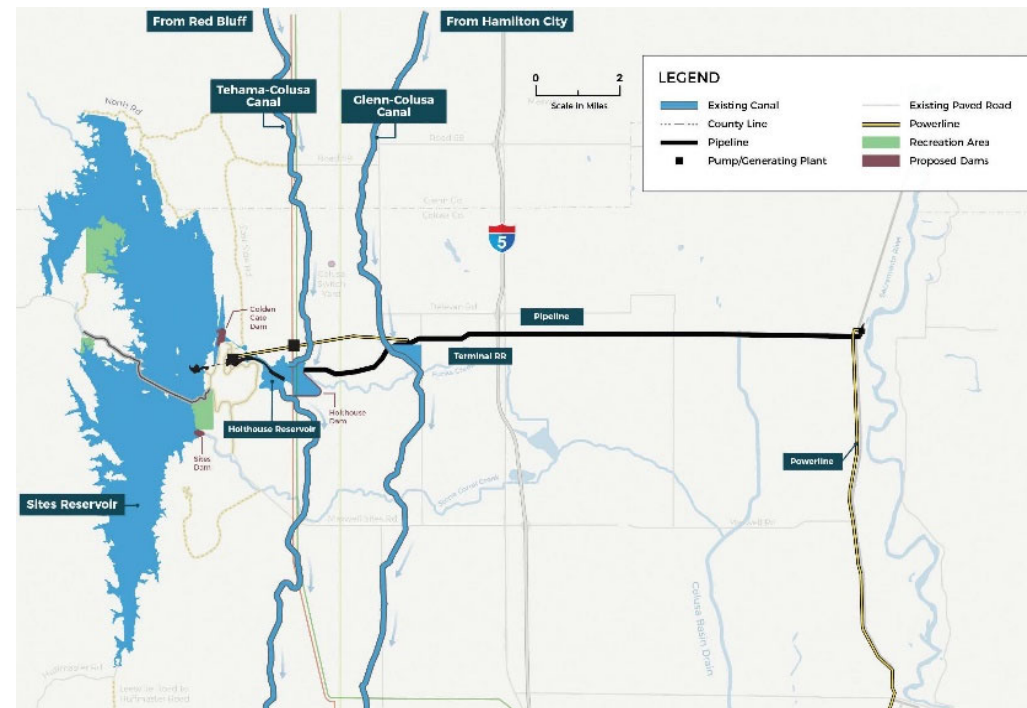
Sites Reservoir

- Proposed off-stream reservoir west of Maxwell, CA
- Divert water from the Sacramento River in higher flow conditions
- Store water in the new Sites Reservoir for later use by farms, cities, and the environment
- Sites Reservoir Authority would build, own, and operate Sites Reservoir
- Funded by State and Federal governments and public water agencies
- A key tool to help the state restore flexibility, reliability, and resilience to our statewide water supply



Sites Reservoir Project

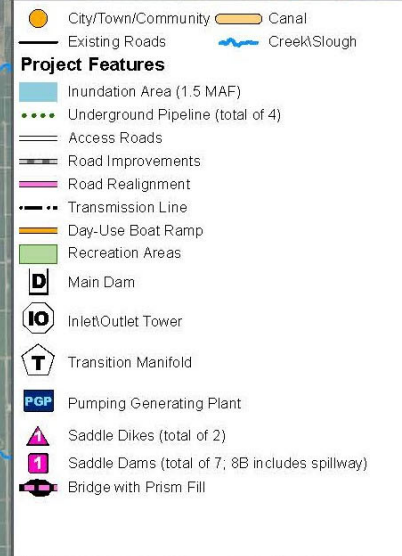
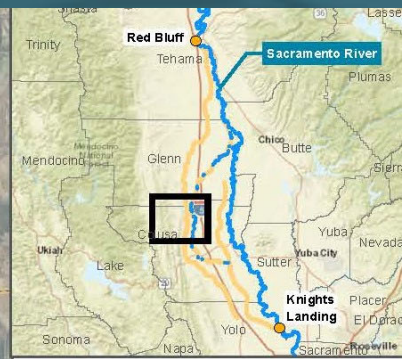
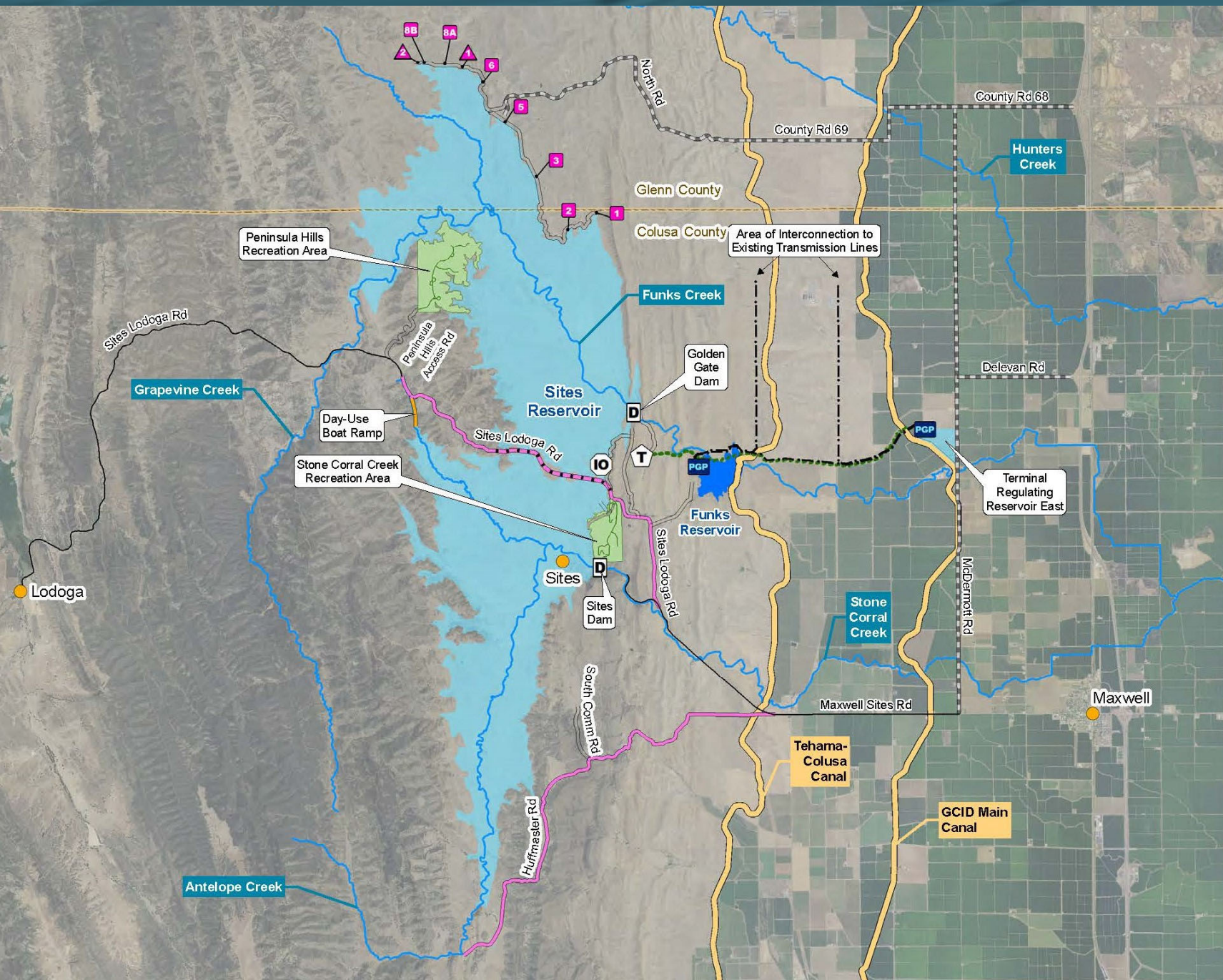
- 2017 Project
 - 1.8 million acre-foot reservoir
 - 3 intakes (about 6,000 cfs diversion capacity in total)
 - New Delevan Pipeline and intake
 - Pump/generation facility
 - Draft EIR/EIS August 2017
- 2019/20 Project modifications
 - Facilities and footprint
 - Operations
 - Conveyance
 - Release to Colusa Basin Drain



Alternatives Considered in the 2021 Revised Draft EIR/Supplemental Draft EIS

Facilities / Operations	Alternative 1 – Authority’s Preferred Project	Alternative 2	Alternative 3
Reservoir Size	1.5 MAF	1.3 MAF	1.5 MAF
Hydropower	Incidental upon release	Same as Alt 1	Same as Alt 1
Diversion Locations	Red Bluff Pumping Plant and Hamilton City	Same as Alt 1	Same as Alt 1
Conveyance Release / Dunnigan Release	1,000 cubic feet per second (cfs) into new Dunnigan Pipeline to Colusa Basin Drain	1,000 cfs into new Dunnigan Pipeline to Sacramento River. Partial release into the Colusa Basin Drain	Same as Alt 2
Terminal Regulating Reservoir (TRR)	Construction of TRR PGP and TRR pipelines; TRR East location	Construction of TRR PGP and TRR pipelines; TRR West location	Same as Alt 1
Reclamation Involvement	<ol style="list-style-type: none"> 1. Funding Partner 2. Operational Exchanges <ol style="list-style-type: none"> a. Within Year Exchanges b. Real-time Exchanges 	Operational Exchanges <ol style="list-style-type: none"> a. Within Year Exchanges b. Real-time Exchanges 	Same as Alt 1, but up to 25% investment
Route to West Side of Reservoir	Bridge across reservoir	Paved road around southern end of reservoir	Same as Alt 1

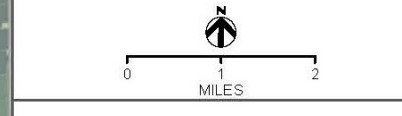
Alternative 1 and 3 Facilities



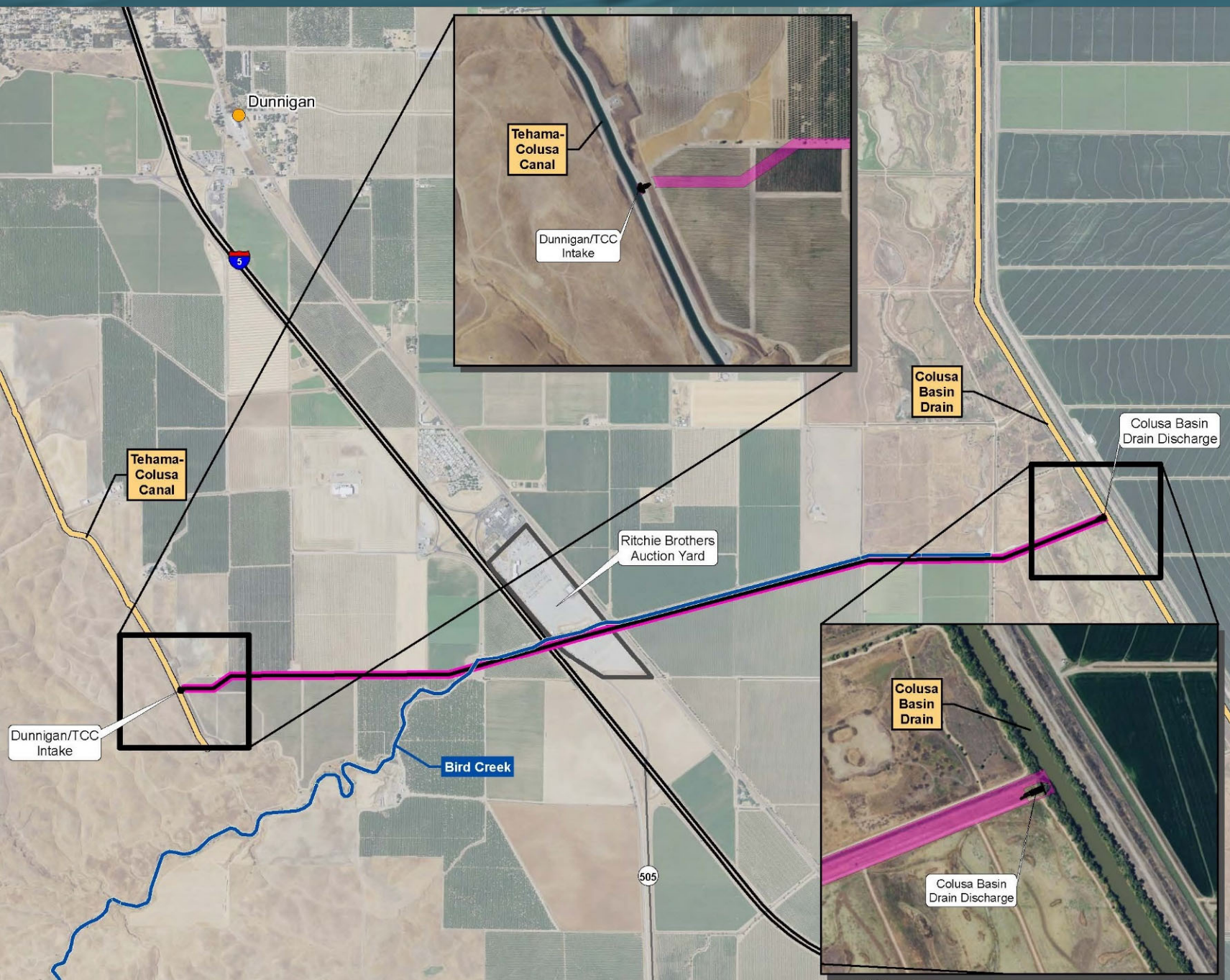
DATA SOURCES: Inlet/Outlet Tower and PGP - ICF, 2020; City/Town - GNIS, 2020; Project Features - AECOM, 2020; Canal, River and Creek/Slough (NHD) - USGS, 2018; Aerial Imagery (NAIP) - USDA, 2020; Counties - CALFIRE-FRAP, 2019.

DISCLAIMER: This exhibit is preliminary and is subject to change.
MAP DATE: 7/9/2021

FIGURE 2-1
ALTERNATIVES 1 AND 3 REGULATING RESERVOIRS AND CONVEYANCE AND SITES RESERVOIR FACILITIES



Alternative 1 and 3 Facilities (cont)

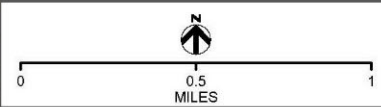


LEGEND

- City/Town/Community
- Bird Creek
- Dunnigan Underground Pipeline

DATA SOURCES: City/Town - GNS, 2020. Project Features - AECOM, 2020. Canals (NHDI) - USGS, 2018. Aerial Imagery (NAIP) - USDA, 2020.
 DISCLAIMER: This exhibit is preliminary and is subject to change.
 MAP DATE: 6/22/2021

FIGURE 2-2
 ALTERNATIVES 1 AND 3
 CONVEYANCE TO SACRAMENTO
 RIVER COMPONENTS



Sites - Status of Environmental Compliance

- CEQA/NEPA
 - Revised Draft EIR/Supplemental Draft EIS circulated for public review and comment November 12, 2021
 - Comment period closed January 28, 2022
 - Final EIR/EIS to be completed early 2023
- ESA Section 7
 - Admin Draft BA under review
 - Reclamation Section 7 lead
- Section 106
 - Draft Programmatic Agreement under review
 - Reclamation Section 106 lead
 - Army Corps signatory agency

EIR/EIS Mitigation

Agricultural Resources
Geology and Paleontological Resources
Air Quality
Greenhouse Gases
Water Quality
Biological Resources

- Wildlife and Special-Status Species
- Vegetation and Wetlands
- Aquatic Species

Cultural Resources
Tribal Cultural Resources

Relationship Between Sites and the Maxwell Intertie

- Common Components and Purpose
 - Both would connect the existing Tehama-Colusa Canal and the existing Glenn Colusa Irrigation District's Main Canal
 - Components include:
 - Construction and operation of the of Terminal Regulating Reservoir (TRR), either at the TRR East or TRR west location
 - Construction of the TRR Pumping Generating Plant and TRR pipelines

Relationship Between Sites and the Maxwell Intertie

- Independent Utility
 - MWI can operate independently of the overall Sites Project
 - If the Sites Project is not built, the MWI can still be constructed and operated to provide critical water management and reliability benefits to the western Sacramento Valley
- Maximized Benefits
 - If MWI is developed and operated in conjunction with the overall Sites Reservoir Project, the project's benefits would greatly expand the efficiency, resiliency and reliability of water management throughout California, including important benefits to rural communities throughout the state
- Generally covering Maxwell Intertie in the Sites Project environmental compliance

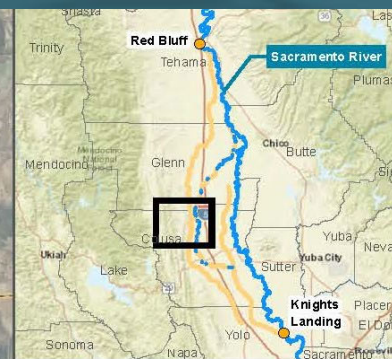
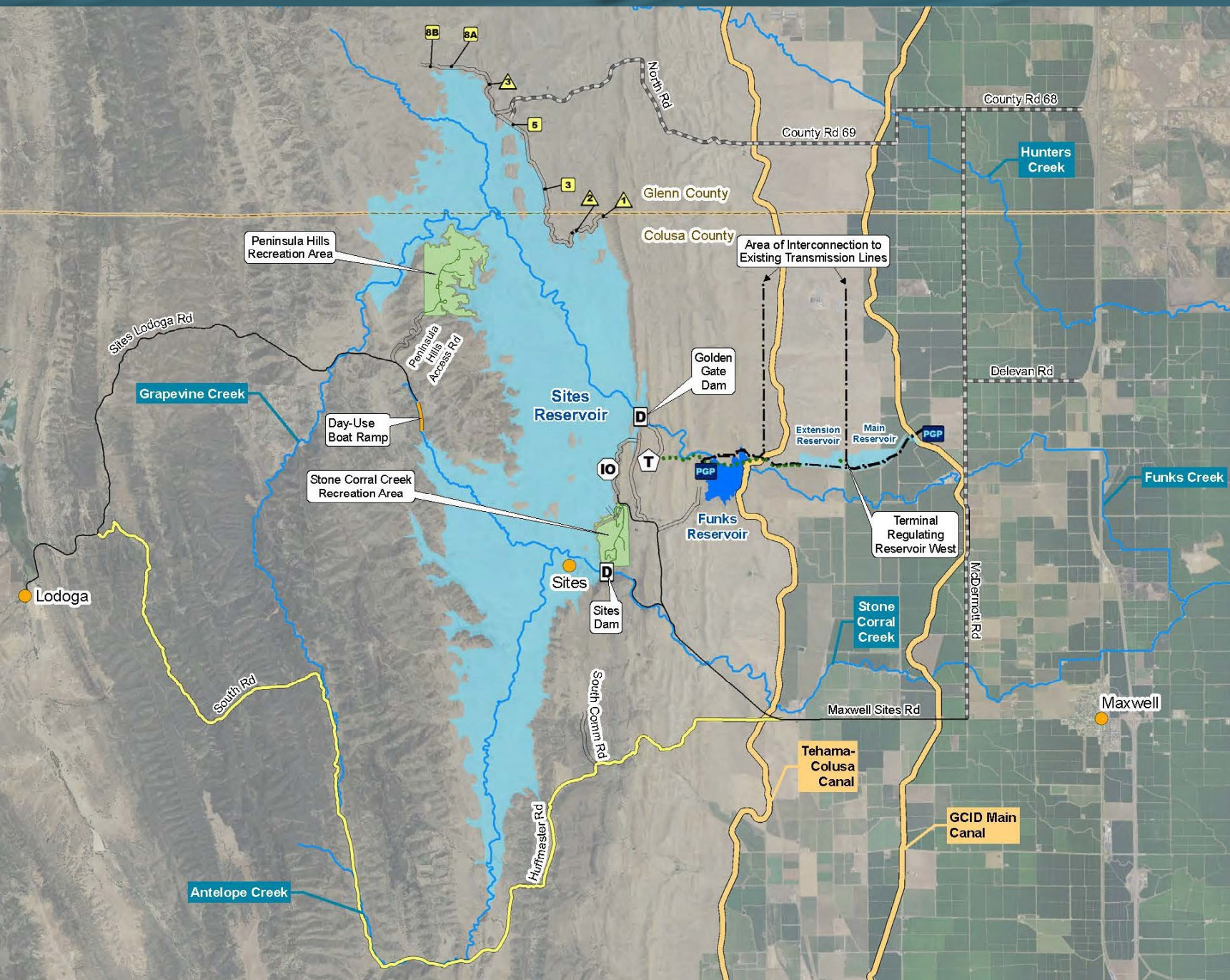
Next Steps

- What are the remaining environmental compliance efforts for the MWI Project? Timing of these?
- How best to move forward with remaining environmental compliance efforts to MWI Project?
 - Currently folded into Sites Project
 - USDA use Reclamation's EIS, ESA Section 7 and Section 106 PA?

Questions



Alternative 2 Facilities



Legend

- City/Town/Community
- Existing Roads
- Canal
- Creek/Slough

Project Features

- Inundation Area (1.3 MAF)
- Underground Pipeline (total of 4)
- Access Roads
- Road Improvements
- Road Realignment
- Transmission Line
- Day-Use Boat Ramp
- Recreation Areas
- Main Dam (D)
- Inlet/Outlet Tower (IO)
- Transition Manifold (T)
- Pumping Generating Plant (PGP)
- Saddle Dikes (total of 3)
- Saddle Dams (total of 4; 8B in cludes spillway)

DATA SOURCES: Inlet/Outlet Tower and PGP - ICF, 2020; City/Town/Community - GNIS, 2020; Project Features - AECOM, 2020; Canal, River and Creek/Slough (NHD) - USGS, 2018; Aerial Imagery (NAIP) - USDA, 2020; Counties - CALFIRE-FRAP, 2019.

DISCLAIMER: This exhibit is preliminary and is subject to change.

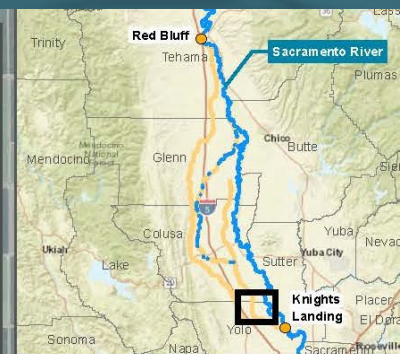
MAP DATE: 7/21/2021

FIGURE 2-3
ALTERNATIVE 2
REGULATING RESERVOIRS AND
CONVEYANCE AND
SITES RESERVOIR FACILITIES

0 1 2
 MILES

Sites

Alternative 2 Facilities (cont)



LEGEND

- City/Town/Community
- ~ Bird Creek
- █ Dunnigan Pipeline

DATA SOURCES: City/Town - GNIS, 2020; Project Features - AECOM, 2020; Canals (NHD) - USGS, 2018; Aerial Imagery (NAIP) - USDA, 2020

DISCLAIMER: This exhibit is preliminary and is subject to change.

MAP DATE: 6/24/2021

FIGURE 2-4
ALTERNATIVE 2 CONVEYANCE TO
SACRAMENTO RIVER COMPONENTS

